



INSTRUCTIONS

-J04067

REV. 2006-12-12

PRIMARY COVER CHROME HARDWARE KIT

GENERAL

Kit Number

94052-07

Models

For model fitment information, please see the P&A Retail Catalog or the Parts and Accessories section of www.harley-davidson.com.

WARNING

The rider's safety depends upon the correct installation of this kit. Use the appropriate service manual procedures. If the procedure is not within your capabilities or you do not have the correct tools, have a Harley-Davidson dealer perform the installation. Improper installation of this kit could result in death or serious injury. (00333a)

NOTE

This instruction sheet references Service Manual information. A Service Manual for your model motorcycle is required for this installation and is available from a Harley-Davidson Dealer.

INSTALLATION

WARNING

Disconnect negative (-) battery cable first. If positive (+) cable should contact ground with negative (-) cable connected, the resulting sparks can cause a battery explosion, which could result in death or serious injury. (00049a)

1. Disconnect the negative (-) battery cable from the battery. Disconnect the positive (+) battery cable from the battery.
2. Replace existing zinc hardware with chrome plated hardware one at a time so the primary chaincase and clutch cover gasket do not need to be replaced.
3. Consult the Service Manual for screw locations and torque values.

WARNING

Connect positive (+) battery cable first. If positive (+) cable should contact ground with negative (-) cable connected, the resulting sparks can cause a battery explosion, which could result in death or serious injury. (00068a)

4. Connect the positive (+) battery cable to the battery. Connect the negative (-) battery cable to the battery.

SERVICE PARTS

is04263

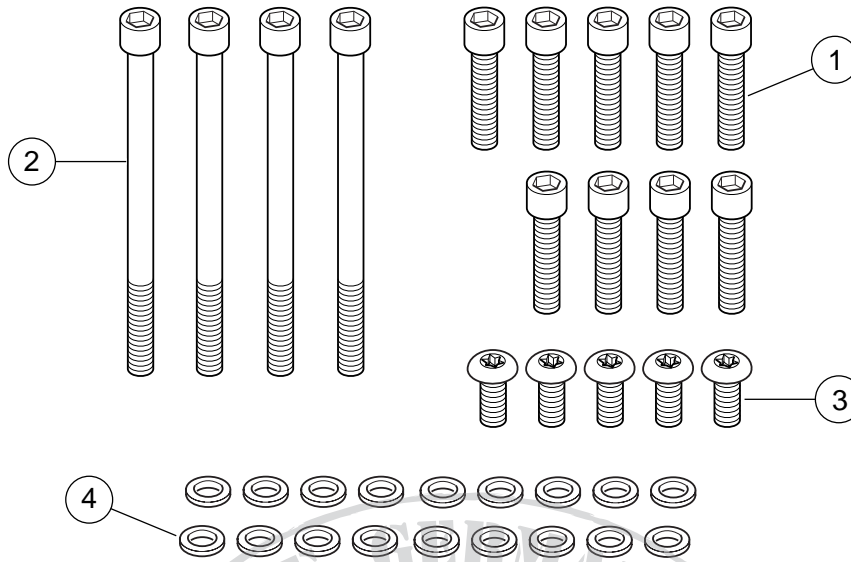


Figure 1. Service Parts: Primary Cover Chrome Hardware Kit

Table 1. Service Parts: Primary Cover Chrome Hardware Kit

Item	Description (Quantity)	Part Number
1	Screw, Chrome socket head hex cap, 1/4-20 x 1 3/8 in.	3125
2	Screw, Chrome socket head hex cap, 1/4-20 x 4 3/4 in.	1749
3	Screw, Chrome button head TORX, 1/4-20 x 11/16 in.	94292-04
4	Washer, Chrome flat, .43 OD x .27 ID x .06 THK in.	946062-03