



INSTRUCTIONS

-J05356

REV. 2011-04-05

CHROME TIE DOWN BRACKETS

GENERAL

Kit Number

93500006

Models

For model fitment information, see the P&A Retail Catalog or the Parts and Accessories section of www.harley-davidson.com (English only).

Additional Parts Required

Not all softails require purchase of hardware kit. Only FLSTF, FLSTFB without windshield require the hardware kit.

Loctite® 262 Threadlocker and Sealant (Part Number 94759-99) will be used on screws for Touring and Softail models.

Kit Contents

See Figure 2 and Table 2.

INSTALLATION

NOTE

All screws used will require an application of Loctite 262, then installed and tightened to 35-45 *in-lbs.* (3.95-5.08 Nm).

- Softail Models:** FLSTC or FLSTF, FLSTFB with windshield: See Figure 1. Remove screws, windshield bushings and washers from the auxiliary lighting mount. Discard washers. Windshield bushings and screws will be used again.
- FLSTF, FLSTFB without windshields: Remove screws and trim strip from fork cover. Discard screws and trim strip. Screws from hardware kit 91800030 will be used to install tie down kit.
- Touring Models:** Electra Glide Models: Remove screws for lower fairing skirt and inner fairing and discard. New screws from the kit will be used to install tie down brackets. Install brackets against inner fairing. If bike has cast auxiliary lighting brackets install auxiliary lighting brackets on top of tie down brackets. If bike has steel plate style auxiliary lighting install tie down brackets on top of auxiliary lighting bracket.
- Road King models: See Figure 2. Remove windshield mounting nuts, bushings washers and studs from fork. Discard all but the windshield bushings. Install windshield bushings against fork cover and tie down bracket against bushings. Install tie down brackets with new screws from kit.

SERVICE PARTS

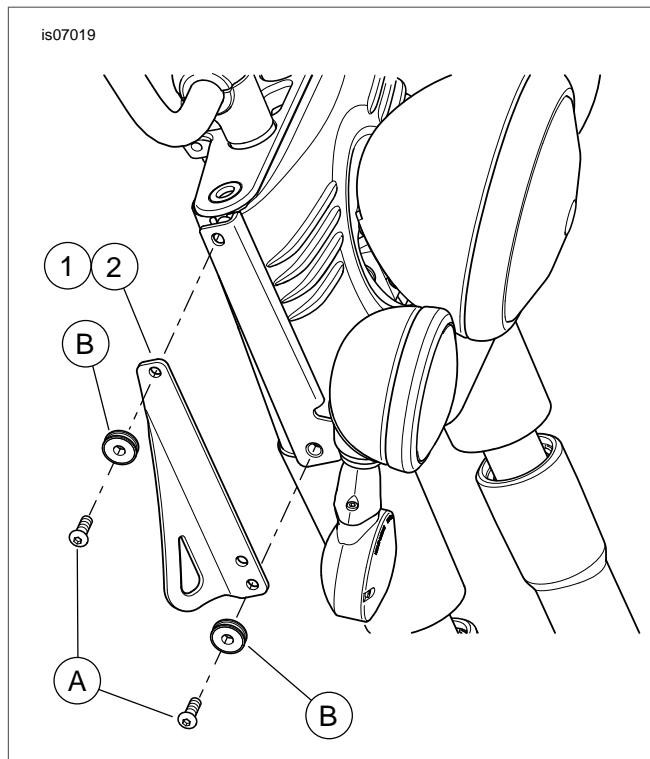


Figure 1. Service Parts: Softail Models Chrome Tie Down Brackets

Table 1. Service Parts Table

Item	Description (Quantity)	Part Number
1	Chrome tie-down bracket, right side	Not Sold Separately
2	Chrome tie-down bracket, left side	Not Sold Separately
Items mentioned in text, but not included in kit:		
A	Softail hardware kit (Part Number 91800030), sold separately	
B	Windshield bushings (4)	

is07019a

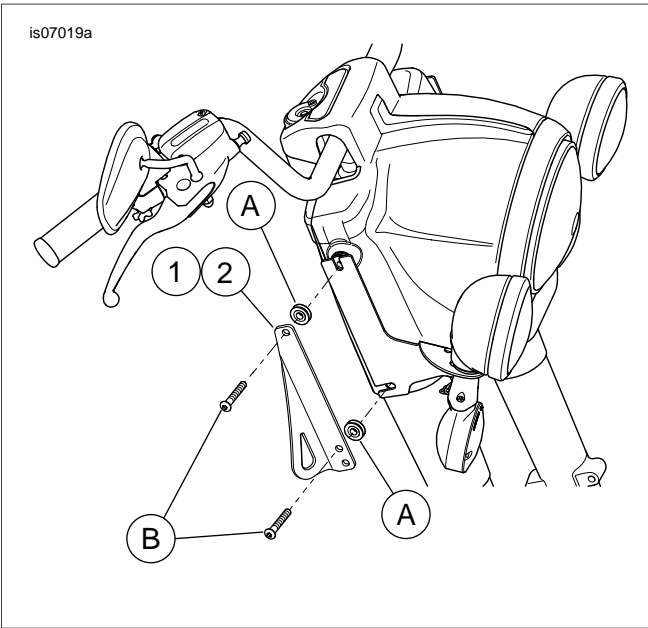


Figure 2. Service Parts: Road King Models Chrome Tie Down Brackets

Table 2. Service Parts Table

Item	Description (Quantity)	Part Number
1	Chrome tie-down bracket, right side	Not Sold Separately
2	Chrome tie-down bracket, left side	Not Sold Separately
Items mentioned in text, but not included in kit:		
A	Windshield bushings (4)	
B	OE screws (4)	

