



INSTRUCTIONS

-J06283

2016-10-13

SCREAMIN' EAGLE 117 (1916 CC) BOLT-ON CONVERSION KIT

GENERAL

Kit Number

92500050, 92500051

Models

For model fitment information, see the P&A Retail Catalog or the Parts and Accessories section of www.harley-davidson.com (English only).

Installation Requirements

Separate purchase and installation of extra parts or accessories may be required for proper installation of this kit. See the Screamin' Eagle® Pro Catalog or contact a Harley-Davidson® Dealer.

▲ WARNING

The rider's safety depends upon the correct installation of this kit. Use the appropriate service manual procedures. If the procedure is not within your capabilities or you do not have the correct tools, have a Harley-Davidson dealer perform the installation. Improper installation of this kit could result in death or serious injury. (00333a)

NOTE

This instruction sheet references service manual information. A service manual for your model motorcycle is required for this installation. One is available from a Harley-Davidson dealer.

Kit Contents

See Figure 1 and Table 1.

NOTE

The kit is intended for High Performance applications only. This kit is not legal for sale or use on pollution controlled motor vehicles. This kit may reduce or void the limited vehicle warranty.

Engine-related performance parts are intended FOR THE EXPERIENCED RIDER ONLY.

REMOVAL

Prepare for Service

1. Disarm security system.
2. Raise the motorcycle.
3. See the service manual. Remove seat.
4. See the service manual. Remove main fuse.

▲ WARNING

When servicing the fuel system, do not smoke or allow open flame or sparks in the vicinity. Gasoline is extremely flammable and highly explosive, which could result in death or serious injury. (00330a)

5. See the service manual. Remove fuel tank.

Remove Engine Components

1. See the service manual. Remove existing air cleaner assembly.
2. See the service manual. Remove existing exhaust system.
3. See the service manual. Disassemble engine top end.

INSTALLATION

Install Engine and Clutch Components

1. See Figure 1 through service parts . Assemble engine top end using parts from kit. See the instruction sheet included with the pistons. See the appropriate ENGINE sections in the service manual.
2. See the service manual. Install exhaust system.
3. Install air cleaner assembly. Follow instructions in air cleaner kit.

Final Assembly

1. See the service manual. Install fuel tank.
2. See the service manual. Install seat. After installing seat, pull up on the seat to verify that it is secure.
3. See the service manual. Install main fuse.

NOTICE

You must recalibrate the ECM when installing this kit. Failure to properly recalibrate the ECM can result in severe engine damage. (00399b)

4. Refer to Screamin' Eagle Pro Catalog or contact a Harley-Davidson dealer for calibration options.
5. Run engine. Repeat several times to verify proper operation.

Operation

Refer to BREAK-IN RIDING RULES in the Owner's Manual to break in the motorcycle.

-J06283



Many Harley-Davidson® Parts & Accessories are made of plastics and metals which can be recycled. Please dispose of materials responsibly.

1 / 2

SERVICE PARTS

is08650

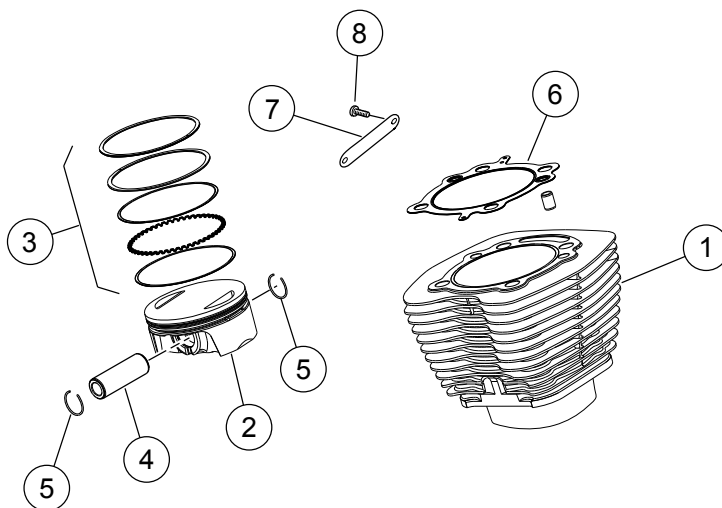


Figure 1. Service Parts: Screamin' Eagle Twin Cam 117 (1916 cc) Bolt-on Conversion Kit

Table 1. Service Parts: Screamin' Eagle Twin Cam 117 (1916 cc) Bolt-on Conversion Kit

Item	Description (Quantity)	Part Number	Item	Description (Quantity)	Part Number
1	Cylinder assembly (Black) (2)	16800126	5	Piston pin circlip (4)	22097-99
1	Cylinder assembly (Granite) (2)	16800128	6	Gasket, 4.125 in, MLS head (2)	16500510
2	Piston (2)	Not Sold Separately	7	117 Cylinder head medallion (2)	Not Sold Separately
3	Piston Ring Set (2)	22000051	8	Screw, cylinder head medallion (4)	25800017
4	Piston pin (2)	22100001			

Notes: Piston Kit (21900079) includes 2 through 5.