



# INSTRUCTIONS

-J06134

2014-10-01

## SCREAMIN' EAGLE TC 103 (1690 CC) STAGE 3 UPGRADE KIT

### GENERAL

#### Kit Number

92500028

#### Models

For model fitment information, see the P&A retail catalog or the Parts and Accessories section of [www.harley-davidson.com](http://www.harley-davidson.com) (English only).

#### Installation Requirements

This kit requires the separate purchase of a SE high flow air cleaner kit. see the P&A Retail Catalog or the Parts and Accessories section of [www.harley-davidson.com](http://www.harley-davidson.com) (English only).

This kit also requires the separate purchase of the Cam Drive Retention Kit (25566-06) and Cam Service Gasket Kit (17045-99C) which are available from a Harley-Davidson dealer.

Separate purchase of Cam Spacer Kit (25928-06) is recommended. This kit contains five different spacers to achieve proper sprocket alignment.

See appropriate sections in service manual for the special tools required to install this kit.

Proper installation of this kit also requires ECM recalibration.

It is recommended that 103 CI and larger engines should use a compression release system. See the P&A retail catalog for related assemblies and tools.

#### ▲ WARNING

**The rider's safety depends upon the correct installation of this kit. Use the appropriate service manual procedures. If the procedure is not within your capabilities or you do not have the correct tools, have a Harley-Davidson dealer perform the installation. Improper installation of this kit could result in death or serious injury. (00333a)**

#### NOTE

*This instruction sheet references service manual information. A service manual for your model motorcycle is required for this installation and is available from a Harley-Davidson dealer.*

#### Kit Contents

See Figure 1 to Figure 3, and Table 1 to Table 3.

#### NOTE

*The Product Information Label contained in this kit is a requirement of the California Air Resource Board (CARB) emissions regulation for all models listed in the fitment statement. Place the label on the right side of the frame*

*directly beneath the VIN sticker. This label is not required outside the state of California.*

### REMOVAL

#### Prepare for Service

#### NOTE

*If vehicle is equipped with Harley-Davidson Smart Security System, see owner's manual for instructions to disarm the system.*

1. Position motorcycle on a suitable lift.
2. Remove seat according to the instructions in the service manual.

#### ▲ WARNING

**When servicing the fuel system, do not smoke or allow open flame or sparks in the vicinity. Gasoline is extremely flammable and highly explosive, which could result in death or serious injury. (00330a)**

3. Remove fuel tank according to the instructions in the service manual.
4. Remove main fuse. Refer to service manual for your motorcycle.

#### Remove Engine Components

1. Remove existing air cleaner assembly. Refer to AIR CLEANER REMOVAL in service manual.
2. Remove existing exhaust system. Refer to EXHAUST SYSTEM REMOVAL in service manual.
3. Disassemble engine top end and cam plate assembly. Refer to appropriate ENGINE sections in service manual.
4. Remove existing clutch diaphragm spring. Refer to CLUTCH REMOVAL in service manual.

### INSTALLATION

#### Install Engine and Clutch Components

1. See Figure 3. Inspect camshaft needle bearings (7) and replace if necessary.
2. See Figure 1 through Figure 3. Assemble cams to cam plate, performance valve springs to cylinder heads and engine top end using parts from kit. Refer to appropriate ENGINE sections in service manual.

#### NOTE

***It is assumed cylinders are new or very low mileage. Measure cylinders per service manual and check piston fit following instructions in supplied piston kit instruction sheet. If proper fitment cannot be attained (out-of-round,***



tapered, etc.) for standard pistons supplied, new cylinders must be purchased.

3. Install clutch diaphragm spring from kit. Refer to CLUTCH INSTALLATION in service manual.
4. Install exhaust system. Refer to EXHAUST SYSTEM INSTALLATION in service manual.
5. Install air cleaner assembly. Refer to AIR CLEANER INSTALLATION in service manual.

### Final Assembly

1. Install main fuse. Refer to service manual for your motorcycle.
2. Install fuel tank according to the instructions in the service manual.
3. Install seat according to the instructions in the service manual.

### ⚠ WARNING

After installing seat, pull upward on seat to be sure it is locked in position. While riding, a loose seat can shift causing loss of control, which could result in death or serious injury. (00070b)

### NOTICE

You must recalibrate the ECM when installing this kit. Failure to properly recalibrate the ECM can result in severe engine damage. (00399b)

4. Download new ECM calibration using Digital Technician®. See a Harley-Davidson dealer.
5. Start and run engine. Repeat several times to verify proper operation.

### Operation

Refer to BREAK-IN RIDING RULES in the owner's manual for instructions to break-in the motorcycle.

## SERVICE PARTS

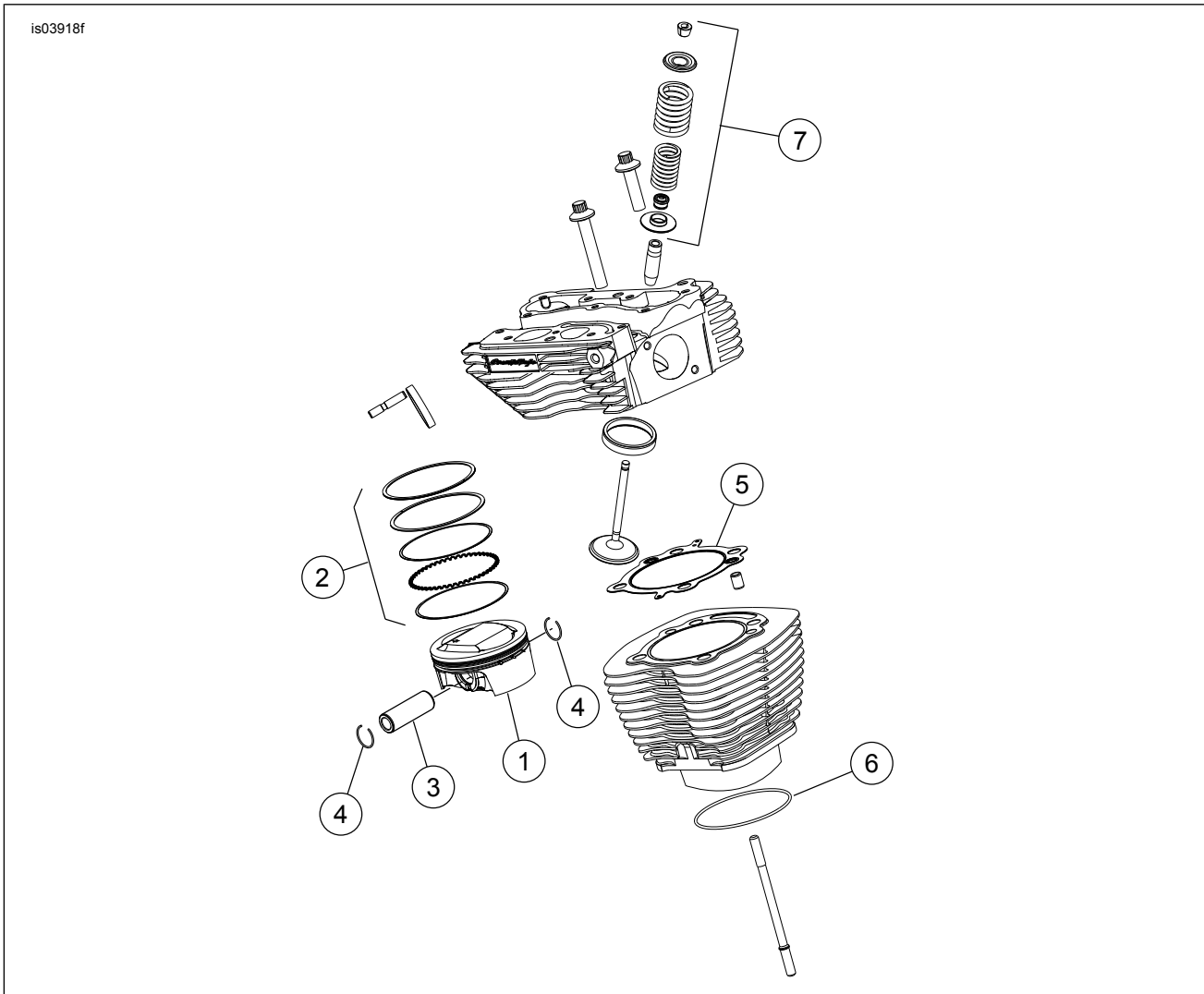


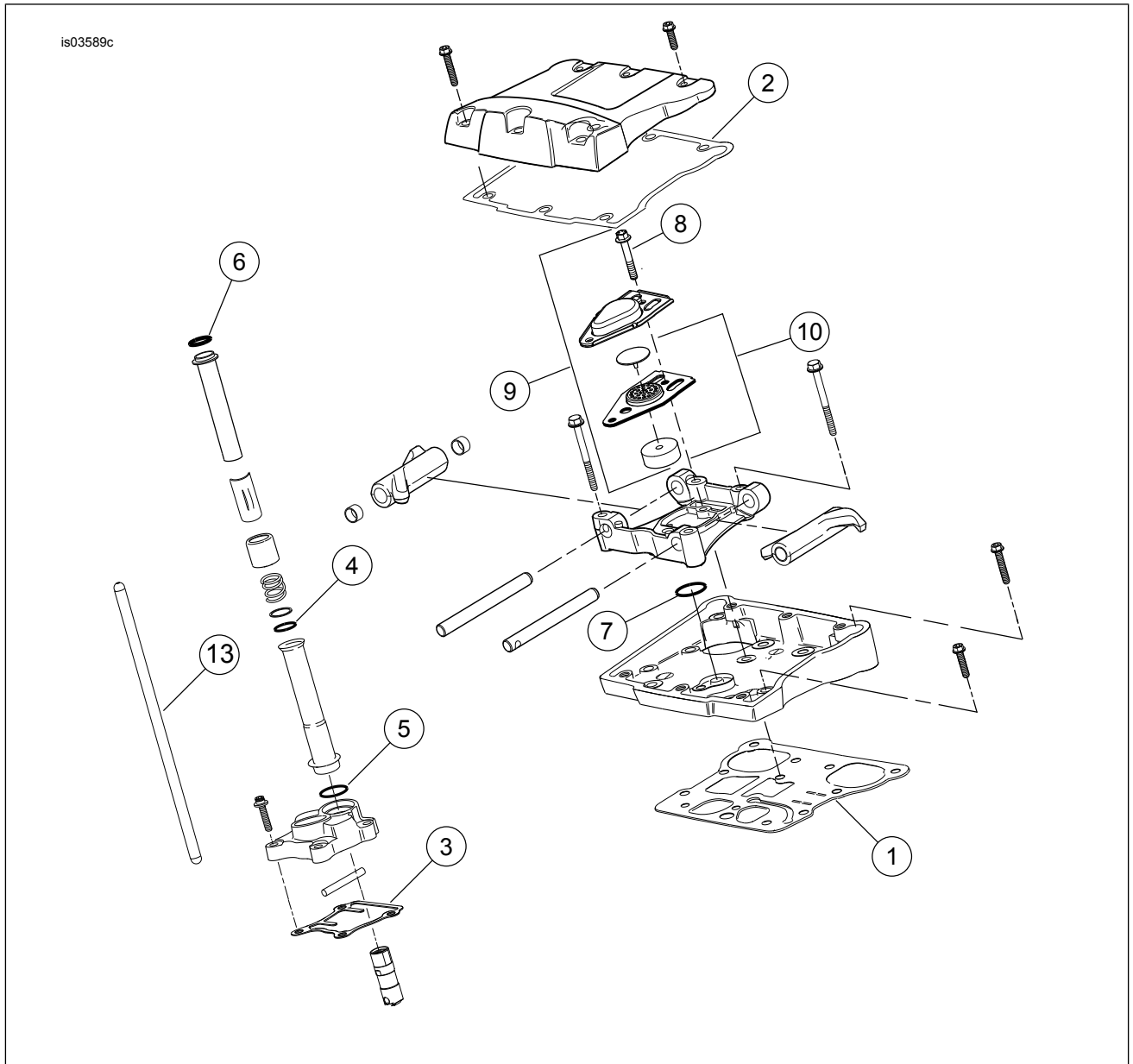
Figure 1. Service Parts: Screamin' Eagle TC 103 (1690 cc) Stage 3 Upgrade Kit

Table 1. Service Parts: Screamin' Eagle TC 103 (1690 cc) Stage 3 Upgrade Kit

Item	Description (Quantity)	Part Number	Item	Description (Quantity)	Part Number
1	Piston (2)	Not Sold Separately	5	Gasket, cylinder head (2)	16787-99
2	Piston ring set (2)	22457-10	6	O-ring, cylinder base (2)	11256

**Table 1. Service Parts: Screamin' Eagle TC 103 (1690 cc) Stage 3 Upgrade Kit**

Item	Description (Quantity)	Part Number	Item	Description (Quantity)	Part Number
3	Piston pin (2)	22455-03	7	Performance valve spring kit	18013-03A
4	Piston pin circlip (4)	22097-99	Notes: Piston Kit (22144-08B) includes items 1 through 4. Items 4, 5 and 6 are also included in the Upper End Overhaul Gasket Kit (17052-99B). For valve spring components (Item 7) refer to instruction sheet J03548.		



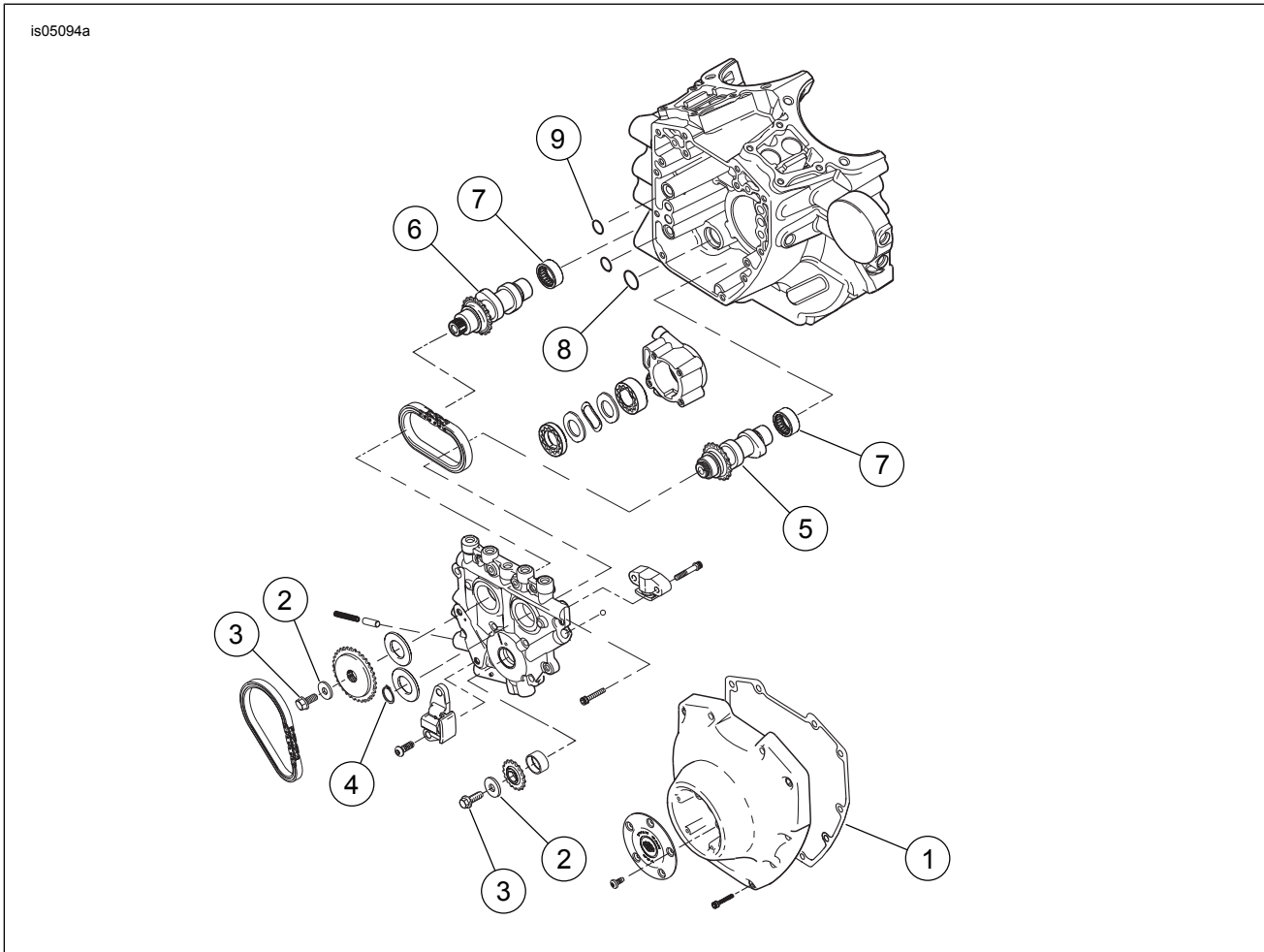
**Figure 2. Service Parts: Screamin' Eagle TC 103 (1690 cc) Stage 3 Upgrade Kit**

**Table 2. Screamin' Eagle TC 103 cubic inch (1690 cc) Conversion Kit**

Item	Description (Quantity)	Part Number	Item	Description (Quantity)	Part Number
1	Gasket, rocker cover base (2)	16719-99A	9	Breather assembly (2)	17025-03A
2	Gasket, rocker cover top (2)	17386-99A	10	Baffle assembly (2)	26500002
3	Gasket, tappet cover (2)	18635-99B	11	Seal, EFI intake (2) (Not Shown)	29995-86B
4	O-ring, middle push rod cover (4)	11132A	12	Seal, map sensor (2) (Not Shown)	11291
5	O-ring, lower push rod cover (4)	11145A	13	Perfect fit pushrods kit, (+0.030 inch)	18401-03
6	O-ring, upper push rod cover (4)	11293	14	Spring clutch diaphragm (Not Shown)	37951-98

**Table 2. Screamin' Eagle TC 103 cubic inch (1690 cc) Conversion Kit**

Item	Description (Quantity)	Part Number	Item	Description (Quantity)	Part Number
7	O-ring, rocker arm support (2)	11270	Notes: Breather assembly 17025-03A includes 8 through 10. Items 1 through 12 are included in Upper End Overhaul Kit (17052-99B) and items 6 and 7, Figure 1.		
8	Breather bolt (4)	4400			



**Figure 3. Service Parts: Screamin' Eagle TC 103 (1690 cc) Stage 3 Kit**

**Table 3. Screamin' Eagle Pro TC 103 (1690 cc) Stage 3 Upgrade Kit**

Item	Description (Quantity)	Part Number
1	Gasket, cam cover	25244-99A
2	Washer	Not Sold Separately
3	Capscrew, flanged	Not Sold Separately
4	Retaining ring	11461
5	Camshaft, front, SE-585	Not Sold Separately
6	Camshaft, rear, SE-585	Not Sold Separately
7	Bearing, needle (2) (must be purchased separately, if needed)	9215
8	O-ring, oil pump to cam plate	11293
9	O-ring, cam plate to crankcase (2)	11301

Notes: Cam Drive Retention Kit (25566-06) includes 2 and 3. Items 1, 4, 8 and 9 are included in Cam Service Gasket Kit (17045-99C). Items 5 and 6 available in Cam Kit (25400117).