



INSTRUCTIONS

-J02638

REV. 08-01-2002

Kit Number 91790-84C

SADDLEBAG SUPPORT KIT

General

This kit is designed for installation on all 1984 and later FXST, FXSTB, FXSTC, FXSTS, FXSTSB, FLST, FLSTC, FLSTF and FLSTN models.

NOTE

This kit may be installed on motorcycles with no sissybar or with a rigid mount sissy bar installed. Longer bolts are provided for installation on motorcycles equipped with a sissy bar.

This kit, and the throwover saddlebags used with it, cannot be used with detachable sideplates or detachable luggage racks.

This kit contains the following items:

QTY	DESCRIPTION	PART NO.
1	Saddlebag Support (Right)	91791-87
1	Saddlebag Support (Left)	91792-87
4	Bolt, Hex Head, 3/8"-16 x 1-3/4"	4720W
4	Bolt, Hex Head, 3/8"-16 x 2"	3775
2	Bolt, Hex Head, 3/8"-16 x 2-1/4"	4722
6	Washer, Flat, 3/8"	6379W

NOTE

1997 through 2002 models equipped with a Softail Wide Tire Kit will utilize the appropriate hardware supplied in that kit.

WARNING

Button head screws from wide tire kit must be installed from the inside out, with the button heads on the inside of the fender. Failure to do so could result in bolt contacting tire, which could result in death or serious injury.

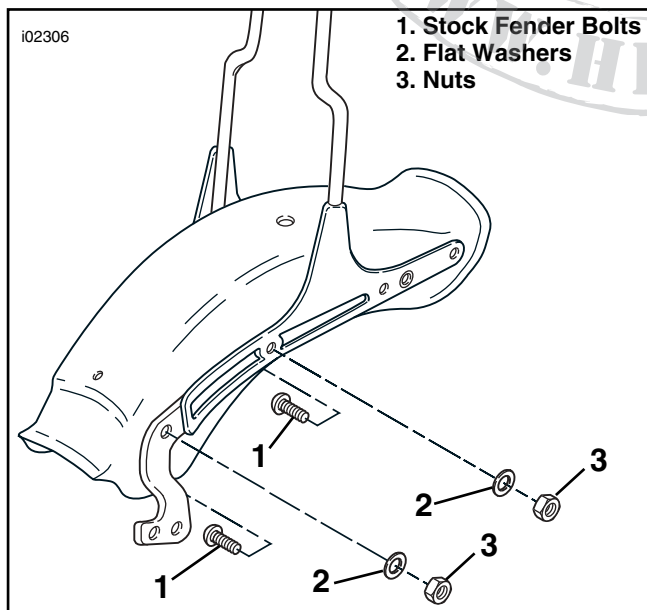


Figure 1. Fender Hardware Removal, 1984-1999 Models

Installation

NOTE

The installation procedure varies slightly from year-to-year and model-to-model. Refer to the procedure that applies to the year and model of your motorcycle.

All 1984 to 1999 Models

1. See Figure 1. Remove the two forward rear-fender bolts (1), washers (2) and nuts (3) on one side of the vehicle. Discard the bolts, but save the nuts and washers for re-use.
2. See Figure 2.

Models with sissy bars: Install two 2" (51 mm) long hex-head bolts (1), supplied in the kit, from the inside of the fender.

Models without sissy bars: Install two 1-3/4" (44 mm) long hex-head bolts (1), supplied in the kit, from the inside of the fender.

3. **All models:** The saddlebag supports (2) are side-specific. Take the correct support from the kit and install it on the bolts. Secure using the washers (3) and nuts (4) removed in Step 1. Tighten to 27 ft-lbs (37 Nm).
4. Repeat Steps 1 through 3 for the other side of the vehicle.

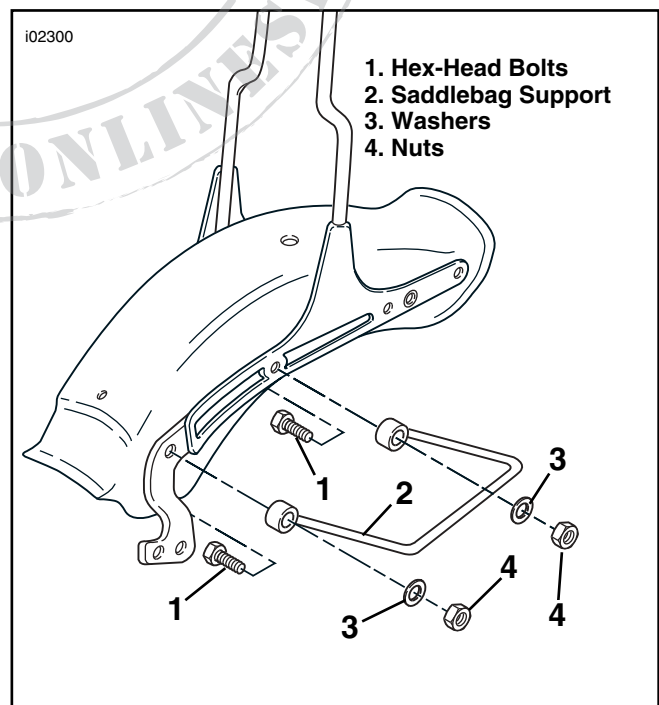


Figure 2. Saddlebag Support Installation, 1984-1999 Models

2000 through 2002 FXST, FXSTB and FXSTS

NOTE

2000 through 2002 models equipped with a Softail Wide Tire Kit will utilize the appropriate hardware supplied in that kit.

⚠ WARNING

Button head screws from wide tire kit must be installed from the inside out, with the button heads on the inside of the fender. Failure to do so could result in bolt contacting tire, which could result in death or serious injury.

1. See Figure 3. Remove the two forward rear-fender bolts (1), washers (2) and nuts (3) on one side of the vehicle. Discard the bolts, but save the nuts and washers for re-use.

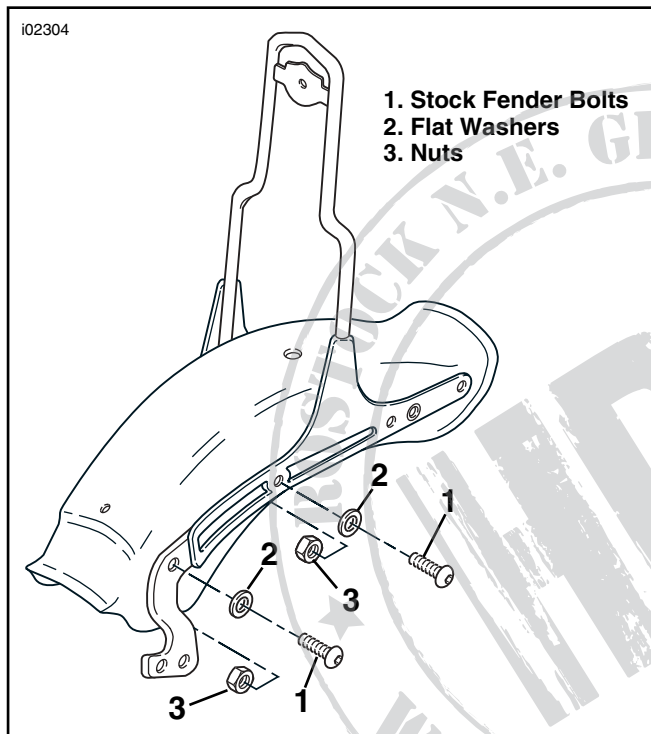


Figure 3. Fender Hardware Removal, 2000 Through 2002 FXST, FXSTB, FXSTS

2. See Figure 4. The saddlebag supports (3) are side-specific.

NOTE

Models with sissy bars do not use the thin washers from the kit in the rear mounting position.

Models with sissy bars:

- a. Install a 2" (51 mm) long hex-head bolt (2), supplied in the kit, through the rear mounting hole of the saddlebag support. Place a flat washer (4), removed in Step 1, onto the exposed threads of the bolt.
- b. Insert the bolt through the sissybar sideplate, the fender support and into the fender. Loosely install the nut (5) removed in Step 1 from the inside of the fender. Do not tighten at this time.

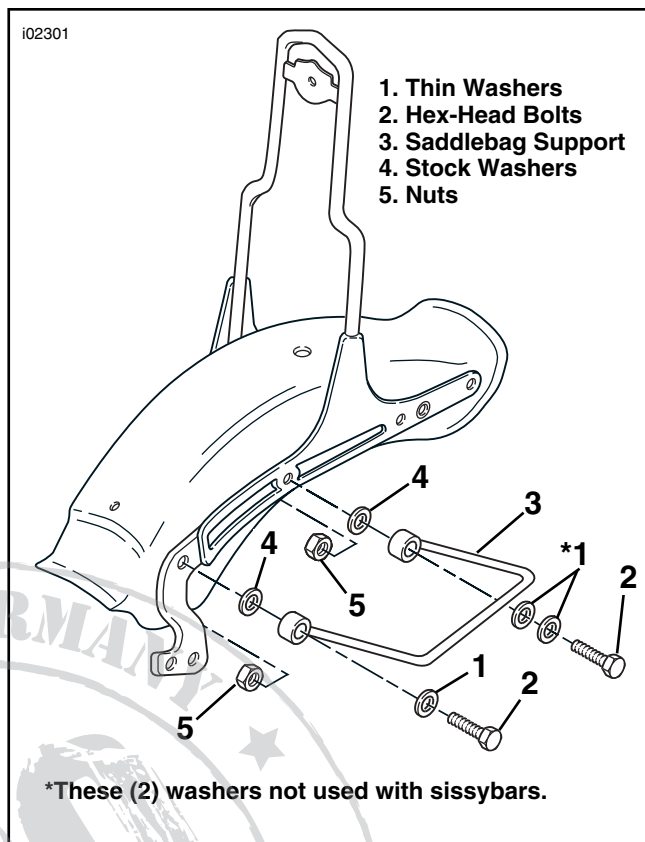


Figure 4. Saddlebag Support Installation, 2000 Through 2002 FXST, FXSTB, FXSTS

- c. Place one thin washer (1) from the kit on another 2" (51 mm) hex-head bolt (2), supplied in the kit, and install the bolt through the front mounting hole of the saddlebag support. Place a flat washer (4) removed in Step 1, onto the exposed threads of the bolt.
- d. Insert the bolt through the fender support and into the fender. Loosely install the nut (5) removed in Step 1 from the inside of the fender.
- e. Tighten both bolts to 27 ft-lbs (37 Nm).

Models without sissy bars:

- a. Place two thin washers (1) from the kit on a 2" (51 mm) hex-head bolt (2), supplied in the kit, and install the bolt through the rear mounting hole of the saddlebag support. Place a flat washer (4), removed in Step 1, onto the exposed threads of the bolt.
 - b. Insert the bolt through the fender support and into the fender. Loosely install the nut (5) removed in Step 1 from the inside of the fender. Do not tighten at this time.
 - c. Place one thin washer (1) from the kit on another 2" (51 mm) hex-head bolt (2), supplied in the kit, and install the bolt through the front mounting hole of the saddlebag support. Place a flat washer (4) removed in Step 1, onto the exposed threads of the bolt.
 - d. Insert the bolt through the fender support and into the fender. Loosely install the nut (5) removed in Step 1 from the inside of the fender.
 - e. Tighten both bolts to 27 ft-lbs (37 Nm).
3. Repeat Steps 1 and 2 for the other side of the vehicle.

2000 through 2002 FLSTC and FLSTF

NOTE

2000 through 2002 models equipped with a Softail Wide Tire Kit will utilize the appropriate hardware supplied in that kit.

WARNING

Button head screws from wide tire kit must be installed from the inside out, with the button heads on the inside of the fender. Failure to do so could result in bolt contacting tire, which could result in death or serious injury.

NOTE

Record the position of all grab strap hardware before removing to ensure correct installation.

1. See Figure 5. Remove the two forward rear-fender bolts (1), washer (2), nuts (3), grab strap bracket (4), bushing (5) and retaining ring (6) on the left side of the vehicle. Discard the bolts, but save all remaining hardware for re-use.

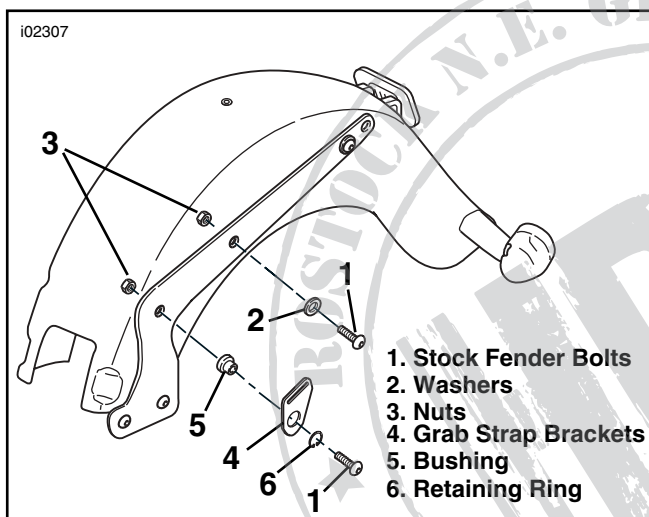


Figure 5. Fender Hardware Removal (Left Side), 2000 Through 2002 FLSTC and FLSTF

2. See Figure 6. The saddlebag supports (3) are side-specific.

NOTE

Models with sissey bars do not use the thin washers from the kit in the rear mounting position.

Models with sissey bars:

- a. Install a 2" (51 mm) long hex-head bolt (2), supplied in the kit, through the rear mounting hole of the left side saddlebag support. Place a flat washer (4), removed in Step 1, onto the exposed threads of the bolt.
- b. Insert the bolt through the sisseybar sideplate, the fender support and into the fender. Loosely install the nut (5) removed in Step 1 from the inside of the fender. Do not tighten at this time.
- c. Assemble a 2-1/4" (57 mm) hex-head bolt (6), supplied in the kit, through the retaining ring (7), grab strap bracket (8) and bushing (9) removed in Step 1. Insert the bolt into the front mounting hole of the saddlebag support.

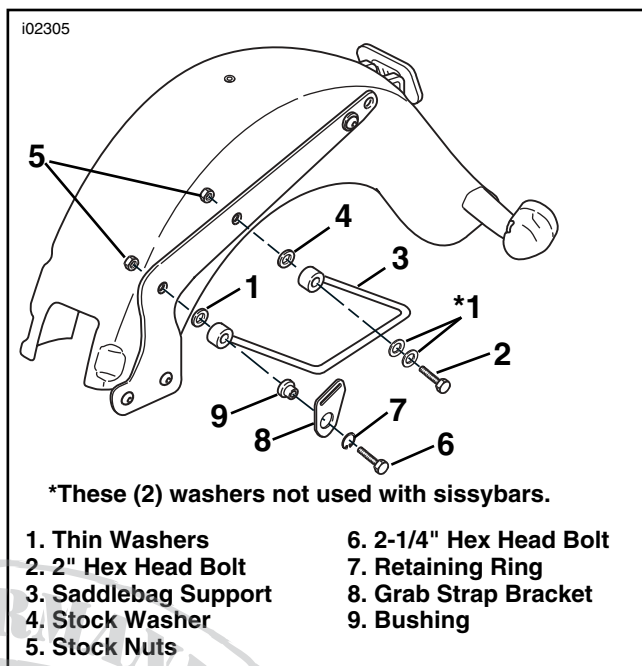


Figure 6. Saddlebag Support Installation (Left Side), 2000 Through 2002 FLSTC and FLSTF

- d. Place one thin washer (1) onto the exposed threads of the bolt. Insert the bolt through the sisseybar sideplate, the fender support and into the fender. Loosely install the nut (5) removed in Step 1 from the inside of the fender. Tighten both bolts to 27 ft-lbs (37 Nm).

Models without sissey bars:

- a. Place two thin washers (1) from the kit on a 2" (51 mm) hex-head bolt (2), supplied in the kit, and install the bolt through the rear mounting hole of the left side saddlebag support. Place a flat washer (4), removed in Step 1, onto the exposed threads of the bolt.
- b. Insert the bolt through the fender support and into the fender. Loosely install the nut (5) removed in Step 1 from the inside of the fender. Do not tighten at this time.
- c. Assemble a 2-1/4" (57 mm) hex-head bolt (6), supplied in the kit through the retaining ring (7), grab strap bracket (8) and bushing (9) removed in Step 1. Insert the bolt into the front mounting hole of the saddlebag support.
- d. Place one thin washer (1) onto the exposed threads of the bolt. Insert the bolt through the fender support and into the fender. Loosely install the nut (5) removed in Step 1 from the inside of the fender. Tighten both bolts to 27 ft-lbs (37 Nm).

2000 through 2002 FLSTC and FLSTF (Cont'd.)

- See Figure 7. Remove the two forward rear-fender bolts (1), washers (2), nuts (3) and grab strap bracket (4) on the right side of the vehicle. Discard the bolts, but save all remaining hardware for re-use.

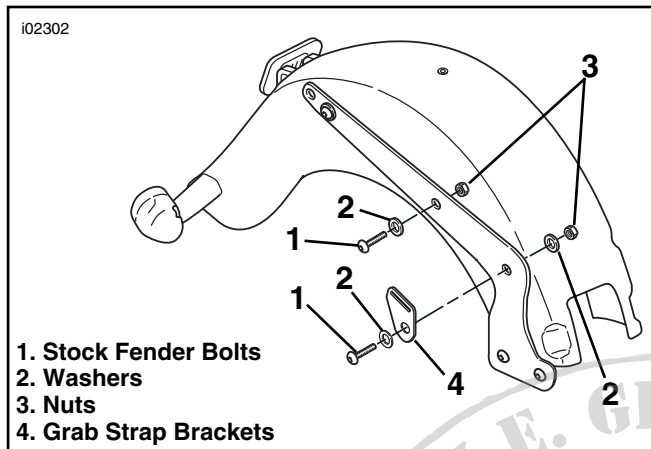


Figure 7. Fender Hardware Removal (Right Side), 2000 Through 2002 FLSTC and FLSTF

- See Figure 8.

NOTE

Models with sissy bars do not use the thin washers from the kit in the rear mounting position.

Models with sissy bars:

- Install a 2" (51 mm) long hex-head bolt (2), supplied in the kit, through the rear mounting hole of the right side saddlebag support. Place a flat washer (6), removed in Step 3, onto the exposed threads of the bolt.
- Insert the bolt through the sissybar sideplate, the fender support and into the fender. Loosely install the nut (4) removed in Step 3 from the inside of the fender. Do not tighten at this time.
- Assemble a 2-1/4" (57 mm) hex-head bolt (5), supplied in the kit through the washer (6) and grab strap bracket (7) removed in Step 3. Insert the bolt into the front mounting hole of the right side saddlebag support.
- Place one thin washer (1) onto the exposed threads of the bolt. Insert the bolt through the sissybar sideplate, the fender support and into the fender. Loosely install the washer (6) and nut (4) removed in Step 3 from the inside of the fender. Tighten both bolts to 27 ft-lbs (37 Nm).

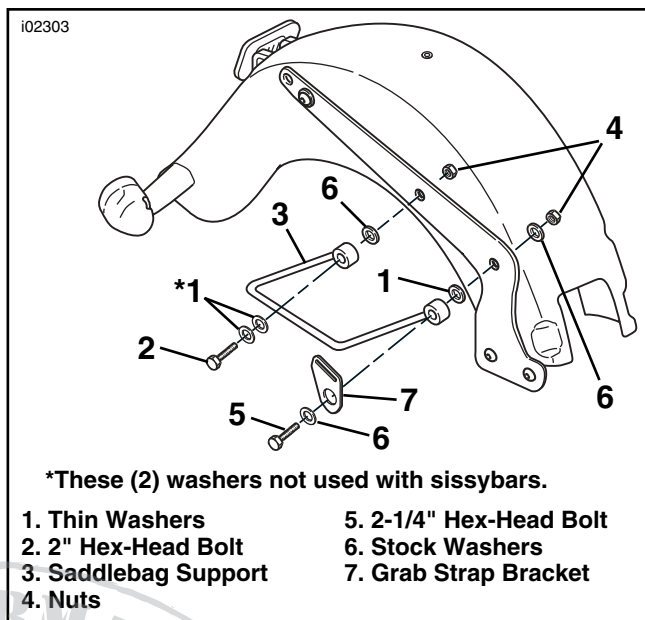


Figure 8. Saddlebag Support Installation (Right Side), 2000 Through 2002 FLSTC and FLSTF

Models without sissy bars:

- Place two thin washers (1) from the kit on a 2" (51 mm) hex-head bolt (2), supplied in the kit, and install the bolt through the rear mounting hole of the right side saddlebag support. Place a flat washer (6), removed in Step 3, onto the exposed threads of the bolt.
- Insert the bolt through the fender support and into the fender. Loosely install the nut (4) removed in Step 3 from the inside of the fender. Do not tighten at this time.
- Assemble a 2-1/4" (57 mm) hex-head bolt (5), supplied in the kit through the washer (6) and grab strap bracket (7) removed in Step 3. Insert the bolt into the front mounting hole of the saddlebag support.
- Place one thin washer (1) onto the exposed threads of the bolt. Insert the bolt through the fender support and into the fender. Loosely install the washer (6) and nut (4) removed in Step 3 from the inside of the fender. Tighten both bolts to 27 ft-lbs (37 Nm).

2003 and Later FXST, FXSTB and FXSTS

1. See Figure 9. Remove the two forward rear-fender bolts (1), washers (2) and fender mounting bracket (3) on one side of the vehicle. Discard the bolts, but save the bracket and washers for re-use.

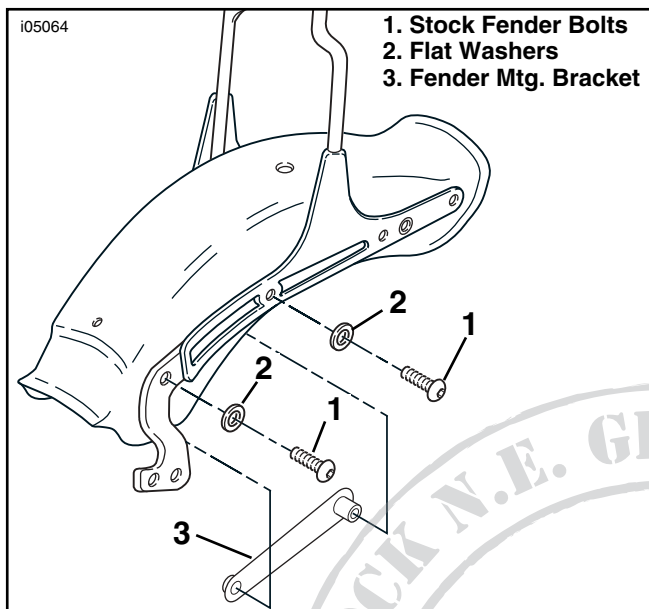


Figure 9. Fender Hardware Removal, 2003 and Later FXST, FXSTB, FXSTS

2. See Figure 10. The saddlebag supports (3) are side-specific.

NOTE

Models with sissy bars do not use the thin washers from the kit in the rear mounting position.

Models with sissy bars: Install a 1-3/4" (44 mm) long hex-head bolt (2), supplied in the kit, through the rear mounting hole of the saddlebag support. Place a flat washer (4), removed in Step 1, onto the exposed threads of the bolt.

Models without sissy bars: Place one thin washer (1) from the kit on a 1-3/4" (44 mm) hex-head bolt (2), supplied in the kit, and install the bolt through the rear mounting hole of the saddlebag support. Place a flat washer (4), removed in Step 1, onto the exposed threads of the bolt.

3. Apply 1-2 drops of Loctite® 242 (blue) to the threads of the bolt. Position the fender mounting bracket (5) removed in Step 1 to the underside of the fender. Loosely install the bolt through the fender into the threaded spacer on the bracket. Do not tighten at this time.
4. Place one thin washer (1) from the kit on a 2-1/4" (57 mm) hex-head bolt (6) from the kit, and install the bolt through the rear mounting hole of the saddlebag support. Place a flat washer (4), removed in Step 1, onto the exposed threads of the bolt.
5. Apply 1-2 drops of Loctite® 242 (blue) to the threads of the bolt. Insert the bolt through the fender support and into the fender. Loosely install the bolt through the fender into the threaded nut on the fender mounting bracket.
6. Tighten both bolts to 27 ft-lbs (37 Nm).
7. Repeat Steps 1 through 6 for the other side of the vehicle.

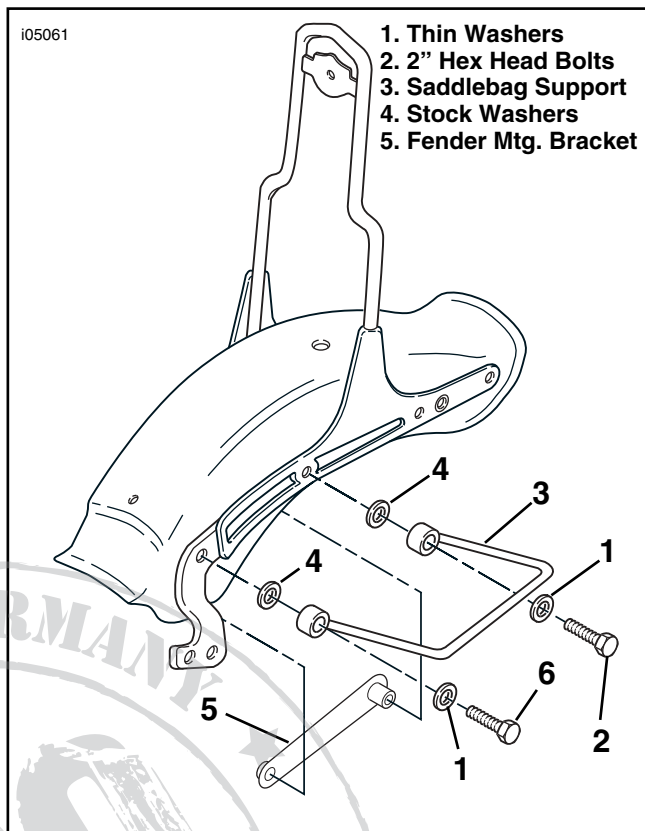


Figure 10. Saddlebag Support Installation, 2003 and Later FXST, FXSTB, FXSTS

2003 and Later FLSTC and FLSTF

NOTE

Record the position of all grab strap hardware before removing to ensure correct installation.

1. See Figure 11. Remove the two forward rear-fender bolts (1), washer (2), fender mounting bracket (3), grab strap bracket (4), bushing (5) and retaining ring (6) on the left side of the vehicle. Discard the bolts, but save all remaining hardware for re-use.

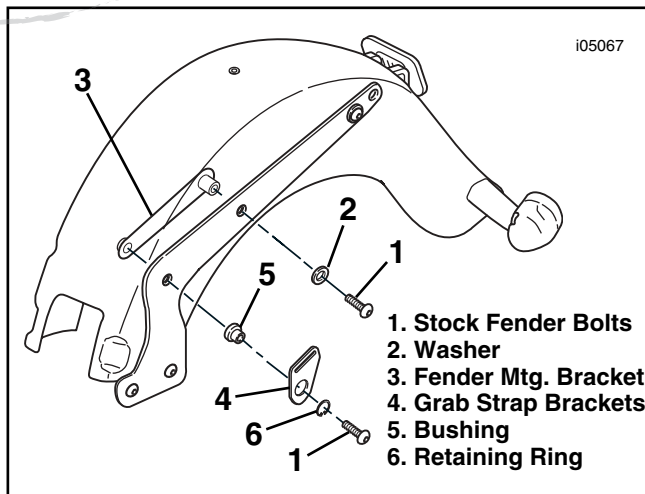


Figure 11. Fender Hardware Removal (Left Side), 2003 and Later FLSTC and FLSTF

2003 and Later FLSTC and FLSTF (Continued)

- See Figure 12. The saddlebag supports (3) are side-specific.

NOTE

Models with sissy bars do not use the thin washers from the kit in the rear mounting position.

Models with sissy bars: Install a 1-3/4" (44 mm) long hex-head bolt (2), supplied in the kit, through the rear mounting hole of the saddlebag support (3). Place a flat washer (4), removed in Step 1, onto the exposed threads of the bolt.

Models without sissy bars: Place one thin washer (1) from the kit on a 1-3/4" (44 mm) hex-head bolt (2), supplied in the kit, and install the bolt through the rear mounting hole of the saddlebag support (3). Place a flat washer (4), removed in Step 1, onto the exposed threads of the bolt.

- Apply 1-2 drops of Loctite® 242 (blue) to the threads of the bolt. Position the fender mounting bracket (5) removed in Step 1 to the underside of the fender. Loosely install the bolt through the fender into the threaded spacer on the bracket. Do not tighten at this time.
- Assemble a 2-1/4" (57 mm) hex-head bolt (6), supplied in the kit, through the retaining ring (7), grab strap bracket (8) and bushing (9) removed in Step 1. Insert the bolt into the front mounting hole of the saddlebag support.
- Place a thin washer (1) from the kit onto the exposed threads of the bolt. Apply 1-2 drops of Loctite® 242 (blue) to the threads of the bolt. Insert the bolt through the fender support and fender, and into the threaded nut on the fender mounting bracket (3).
- Tighten both bolts to 27 ft-lbs (37 Nm).
- See Figure 13. Remove the two forward rear-fender bolts (1), washers (2), fender mounting bracket (3) and grab strap bracket (4) on the right side of the vehicle. Discard the bolts, but save all remaining hardware for re-use.

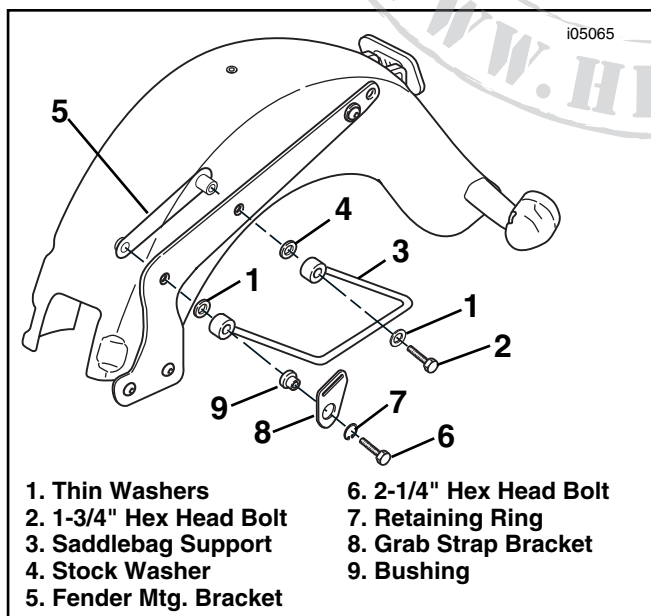


Figure 12. Saddlebag Support Installation (Left Side), 2003 and Later FLSTC and FLSTF

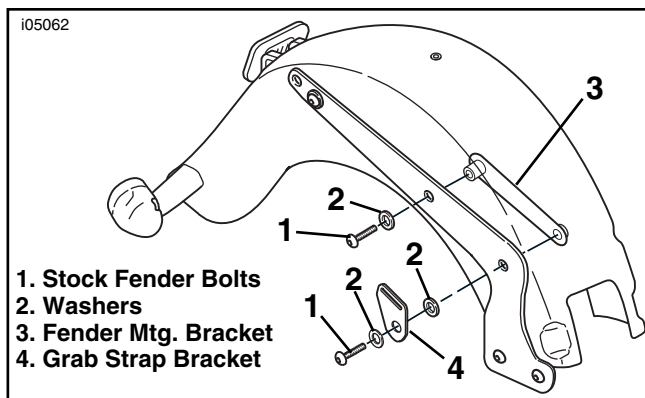


Figure 13. Fender Hardware Removal (Right Side), 2003 and Later FLSTC and FLSTF

- Models with sissy bars:** See Figure 14. Install a 1-3/4" (44 mm) long hex-head bolt (2), supplied in the kit, through the rear mounting hole of the saddlebag support (3). Place a flat washer (6), removed in Step 7, onto the exposed threads of the bolt.
- Models without sissy bars:** See Figure 14. Place one thin washer (1) from the kit on a 1-3/4" (44 mm) hex-head bolt (2), supplied in the kit, and install the bolt through the rear mounting hole of the saddlebag support (3). Place a flat washer (6), removed in Step 7, onto the exposed threads of the bolt.
- Apply 1-2 drops of Loctite® 242 (blue) to the threads of the bolt. Position the fender mounting bracket (4) removed in Step 7 to the underside of the fender. Loosely install the bolt through the fender into the threaded spacer on the bracket. Do not tighten at this time.
- Assemble a 2-1/4" (57 mm) hex-head bolt (5), supplied in the kit, through the flat washer (6) and grab strap bracket (7) removed in Step 7. Insert the bolt into the front mounting hole of the saddlebag support.
- Place a thin washer (1) from the kit onto the exposed threads of the bolt. Apply 1-2 drops of Loctite® 242 (blue) to the threads of the bolt. Insert the bolt through the fender support and fender, and into the threaded nut on the fender mounting bracket (4).
- Tighten both bolts to 27 ft-lbs (37 Nm).

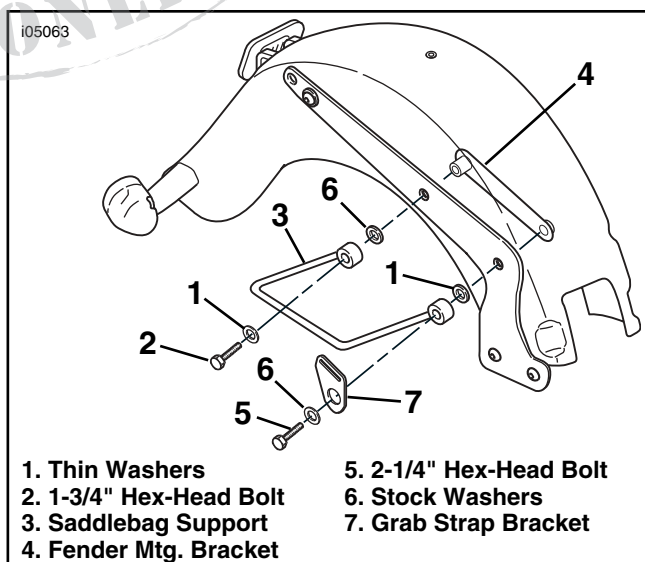


Figure 14. Saddlebag Support Installation (Right Side), 2003 and Later FLSTC and FLSTF