



# INSTRUCTIONS

-J00511

REV. 8-31-2001

Kit Number 91099-94A

## DRESSER V-LOGO FRONT FENDER RAIL

### General

This kit is designed for installation on 1984 and later FLT, FLHT, FLHS and FLHR models.

See *Service Parts Illustration* for a list of kit contents.

#### NOTE

- On FLT and FLHT models the original equipment (stock) fender rail and bumper cushion must be removed. Retain the hardware to mount the fender rail from this kit.
- FLHR and FLHS models are not equipped with a fender rail or bumper, so perform the installation procedure.

### Removing Stock Fender Rail On FLT And FLHT Models

1. See Figure 2. Reach under front edge of fender and remove locknut (1) and washer (2).
2. Bend corners of lockplate (3) away from flats on bolts (4).
3. Place wood blocks on top of tire to hold fender in place.
4. Loosen and remove the four bolts (4) which attach fender rail and fender to fender mount on forks.
5. Discard lockplates (3). Retain bolts (4) for installing new fender rail.
6. Proceed to step 2 of the "Installation" procedure.



Figure 1. Installed Fender Rail

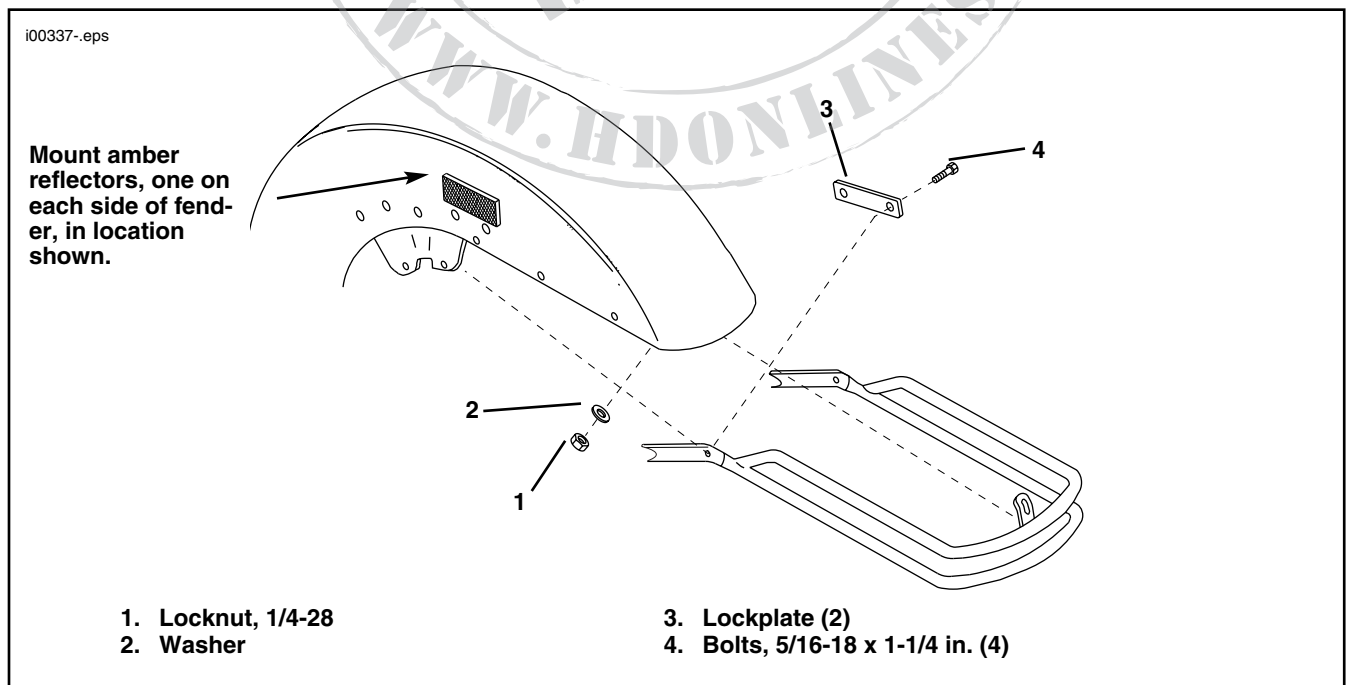


Figure 2. Installation of Front Fender Rail

## Installation

1. See Figure 1. On FLHR and FLHS models, perform steps 2 through 6 given above.

**NOTE**

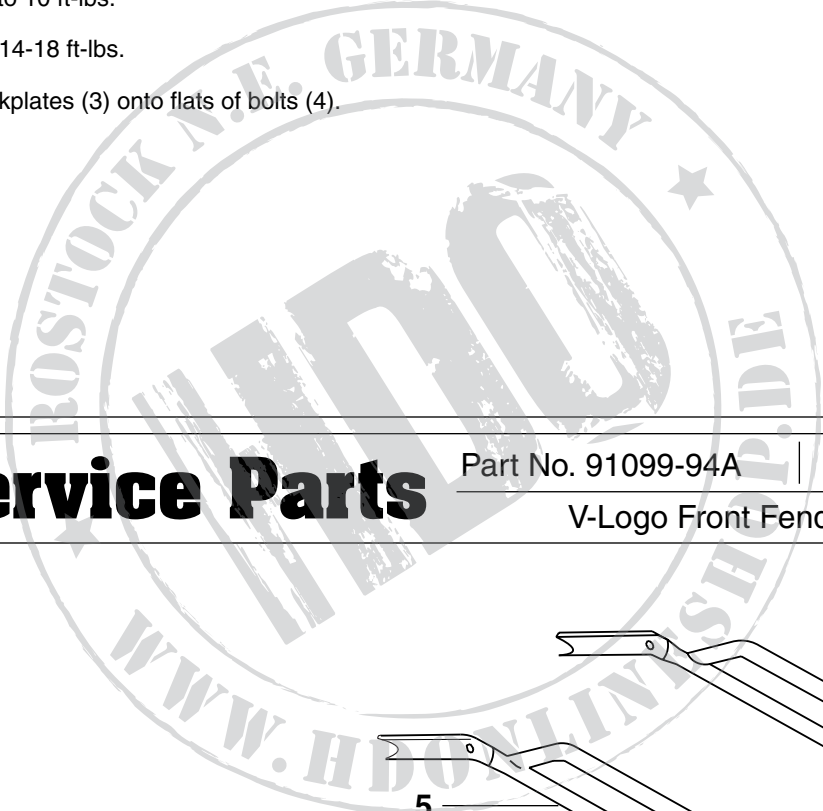
When installing fender rail, be sure fender rail supports are inside of fender

2. Place fender rail from kit into position, aligning the front bracket slotted hole with weld stud in front of fender.
3. See Figure 2. Loosely secure fender rail to forks with stock bolts(4) and new lockplates (3) from kit.
4. Install washer (2), locknut (1) and and tighten finger tight.
5. Remove wood blocks from top of tire.
6. Tighten locknut (1) to 10 ft-lbs.
7. Tighten bolts (4) to 14-18 ft-lbs.
8. Bend corners of lockplates (3) onto flats of bolts (4).

**WARNING**

Federal Motor Vehicle Safety Standard (FMVSS) 108 requires all motorcycles to be equipped with side reflectors. See Figure 1. Install or have your Dealer install an amber reflector on each side of the front fender as shown. Failure to install these reflectors could decrease visibility of motorcycle and result in death or serious injury.

9. See Figure 2. Clean areas on both sides of fender where amber reflectors are to be mounted.
10. Remove backing paper from rear of reflector and place reflectors in position shown in Figure 2.



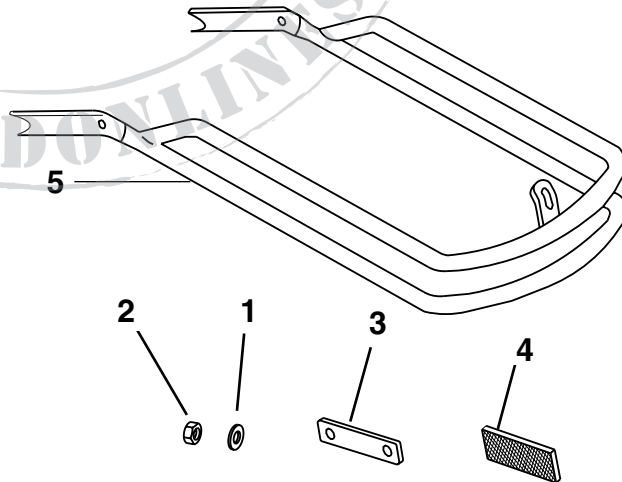
# Service Parts

Part No. 91099-94A

Date 8/01

V-Logo Front Fender Rail

i04347



Item	Description	Part No.
1	Washer	6703
2	Locknut	7682
3	Locking plate	59166-80
4	Amber reflector	59256-84A
5	Rail assembly	Not sold separately