



INSTRUCTIONS

-J03326

REV. 08-30-2004

Kit Numbers 90839-94A and 91265-98A

NOSTALGIC SADDLEBAG GUARD RAILS

General

Kit 90839-94A fits all 1995 and later FLHT (Electra Glide® Standard), 1994 and later FLHR (Road King®) except FLHRCI, and 1993 FLHS (Electra Glide® Sport) model motorcycles **except** as noted below.

Kit 91265-98A fits all 1998 and later FLHRCI (Road King® Classic) model motorcycles **except** as noted below.

These kits **do not fit**:

- FLHRS (Road King® Custom) models,
- Models fitted with Saddlebag Rail Bracket Kit, part number 91777-02,
- Models fitted with Saddlebag Filler Strip Kit, part numbers 45898-98 or 45899-98.

See the Service Parts list for kit contents.

Installation

1. Remove the saddlebag from one side of the motorcycle.
2. See Figure 1. If the label (2) is attached to the side of the saddlebag guard (1) as shown, remove the label from the guard.
3. **For Kit 91265-98A only:** Remove the reflector (3) from the saddlebag guard (1).
4. **For ALL Kits:** Loosen, but do not remove, the upper TORX® head screw (4), and the lower TORX head screw and locknut (5) at the front of the guard.
5. Remove and discard the two screws (8) and locknuts (9) fastening the rear of the saddlebag support (6) and rear bumper rail (7) or saddlebag-to-fender support bracket (10) to the saddlebag support bracket (11).

NOTE

The saddlebag guard rails are side-specific. The guard rails wrap around the rear of the saddlebag, with the smaller-diameter rail at the top.

6. See the Service Parts illustration. Obtain the correct-side saddlebag guard rail (1), two hex-head cap screws (5) and two flanged lock nuts (6) from the kit.
7. Position the inboard-side mounting bracket of the guard rail against the saddlebag support (C) and the lower end of the saddlebag support bracket (F), lining up the holes. Insert the new screws, from the rear, in the following order:
 - a. through the rear bumper rail (D) or saddlebag-to-fender support bracket (E),
 - b. through the saddlebag support bracket (F),
 - c. through the holes in the saddlebag support (C), and
 - d. through the guard rail (1).
8. Thread the flanged lock nuts onto the screw threads, but do not fully tighten at this time.
9. Obtain the correct-side saddlebag guard clamp (3), two button-head hex-socket screws (4) and two split lock washers (5) from the kit.
10. Raise the forward end of the guard rail, fitting the angled groove around the inboard surface of the saddlebag guard. Place the clamp in position against the outboard surface of the guard, lining up the holes in the clamp and guard rail.
11. Place a split lock washer over the threads of each button-head screw, and insert the screws through the holes in the guard rail. Thread the screws into the clamp mounting holes, but do not fully tighten at this time.

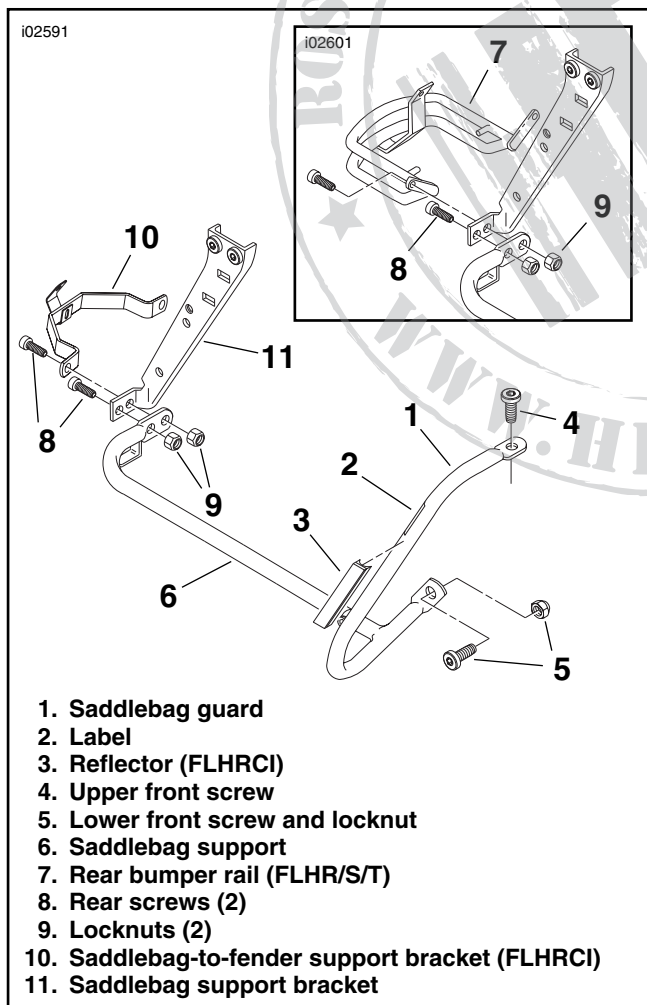


Figure 1. Existing Saddlebag Guard Hardware

12. Tighten the TORX-head screw (A) at the top, and the screw and nut (B) at the bottom of the front saddlebag guard to 15-20 ft-lbs (20-27 Nm).
13. Line up the guard rail (1) so it is parallel to the ground when viewed from both the side and the rear of the motorcycle for best appearance. When the rail has been aligned parallel to the ground, tighten the hex-head cap screws (6) and flanged lock nuts (7) at the rear mount to 15-20 ft-lbs (20-27 Nm).
14. Tighten the screws (4) to 22 **in-lbs** (2.5 Nm).
15. Repeat Steps 1 through 14 for the opposite side.
16. If the labels were removed in Step 2, clean the top surface of the saddlebag guard with a mixture of 50 to 70% isopropyl alcohol and 30 to 50% distilled water to ensure surface cleanliness. Allow to dry thoroughly.
17. Peel the backing from one of the new labels (8) from the kit, and position straight across the top surface of the saddlebag guard as shown, so it is readable from the passenger position. Smooth the label around the curve of the guard.
18. Repeat Steps 16 and 17 for the opposite side.

For Kit 91265-98A only:

⚠ WARNING

Federal Motor Vehicle Safety Standard (FMVSS) 108 requires motorcycles to be equipped with rear and side reflectors. Be sure rear and side reflectors are properly mounted. Low visibility of rider can result in death or serious injury. (00336a)

19. To ensure surface cleanliness, clean the upper out-board surface of the saddlebag guard (where the reflector was removed in Step 3) with a mixture of 50 to 70% isopropyl alcohol and 30 to 50% distilled water. Allow to dry thoroughly.

NOTE

The reflectors are side- and orientation-specific. There are markings on the back of the reflector reading "L BOTTOM" or "R BOTTOM" to identify the correct mounting position.

20. Peel the backing from the base of the correct **new** reflector (2) from the kit. Without touching the reflector to the saddlebag guard, position the reflector
 - correct end up,
 - above the guard rail
 - parallel to the guard,
 - facing straight out to the side,
21. Press the reflector to the saddlebag guard and hold pressure for 30 seconds. After releasing pressure, avoid direct contact with the reflector for about 20 minutes.
22. Repeat Steps 19 through 22 for the opposite side.



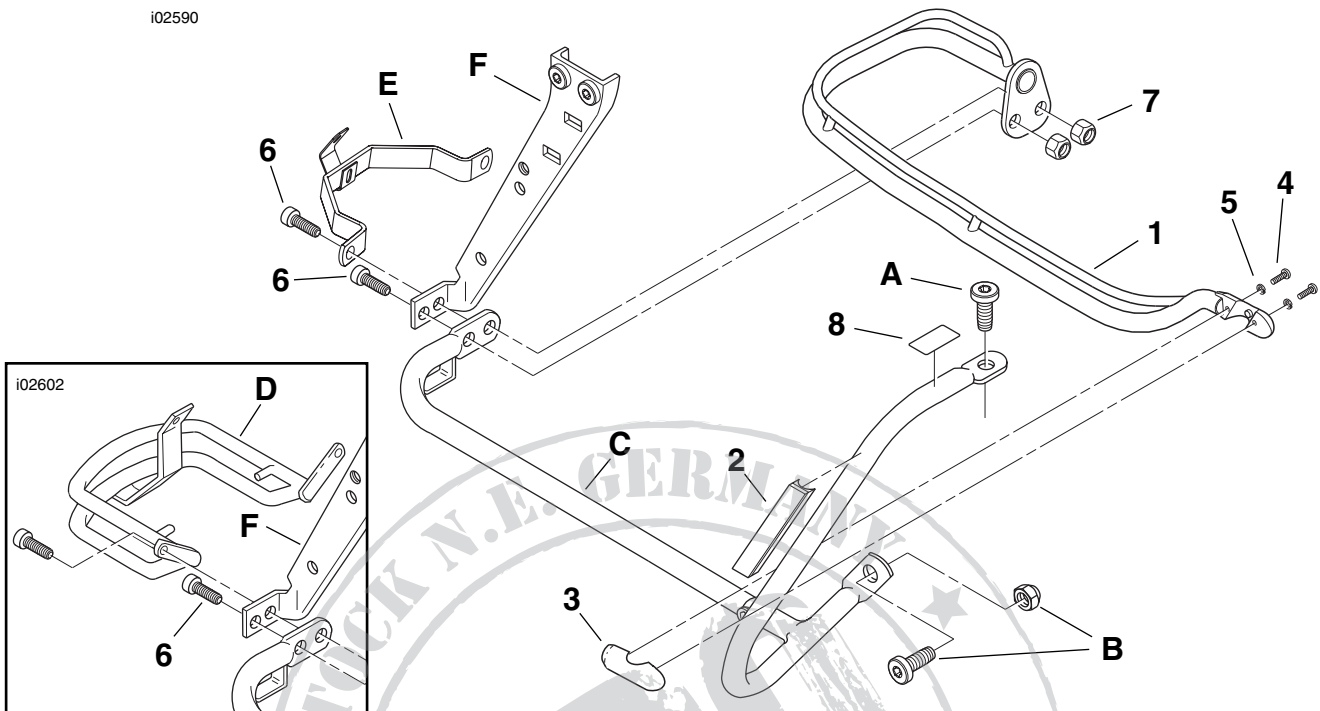
Service Parts

Part Nos. 90839-94A, 91265-98A

Date 08/04

Nostalgic Saddlebag Guard Rails

i02590



Kit 90839-94A: Nostalgic Saddlebag Guard Rail Kit (FLHR, FLHS, FLHT):

Item	Description (Quantity)	Part No.
1	Saddlebag guard rail (right side)	90932-04
	Saddlebag guard rail (left side) (not shown)	90933-04

Kit 91265-98A: Nostalgic Saddlebag Guard Rail Kit (FLHRCI):

Item	Description (Quantity)	Part No.
1	Saddlebag guard rail (right side)	91266-04
	Saddlebag guard rail (left side) (not shown)	91267-04
2	Reflector, red (right side)	59370-98
	Reflector, red (left side) (not shown)	59371-98

The following items are common to both kits:

3	Saddlebag guard clamp (right side)	90937-04
	Saddlebag guard clamp (left side) (not shown)	90938-04
4	Button-head screw, hex socket, #10-32 x 3/4 in, (Chrome) (4)	94383-92T
5	Lock washer, split, #10 (4)	7069
6	Hex-head cap screw, 5/16-18 x 1 in. (4)	4017
7	Lock nut, flanged, 5/16-18 (4)	7531
8	Label, "This guard may provide..." (2)	14148-86

Items not in kit

- A Original equipment Torx® head screw at top of saddlebag front guard
- B Original equipment Torx head screw and nut at bottom of saddlebag front guard
- C Original equipment saddlebag guard and support assembly
- D Original equipment rear bumper rail (FLHR/S/T models)
- E Original equipment saddlebag-to-fender support bracket (FLHRCI models)
- F Original equipment saddlebag support bracket