



INSTRUCTIONS

-J04517

2007-10-02

FLSTN HARD SADDLEBAG KIT

GENERAL

Kit Number

90725-YYxxx

Models

For model fitment information, please see the P&A Retail Catalog or the Parts and Accessories section of www.harley-davidson.com (English only).

⚠ WARNING

Do not exceed saddlebag weight capacity. Put equal weight in each bag. Too much weight in saddlebags can cause loss of control, which could result in death or serious injury. (00383a)

NOTE

Maximum saddlebag weight capacity is 7 pounds (3.2 Kg.) in each bag.

Additional Parts Required

Separate purchase and installation of additional parts or accessories may be required for proper installation of this kit on your model motorcycle. Please see the P&A Retail Catalog or the Parts and Accessories section of www.harley-davidson.com (English only) for a list of required parts or accessories for your model.

Tools and Supplies Required

Loctite® 243 (Blue) Threadlocker and Sealant (H-D Part Number 99642-97) is required for the proper installation of this kit.

⚠ WARNING

The rider's safety depends upon the correct installation of this kit. Use the appropriate service manual procedures. If the procedure is not within your capabilities or you do not have the correct tools, have a Harley-Davidson dealer perform the installation. Improper installation of this kit could result in death or serious injury. (00333a)

NOTE

This instruction sheet references Service Manual information. A Service Manual for your model motorcycle is required for this installation and is available from a Harley-Davidson Dealer.

Kit Contents

See Figure 10 and Table 1.

INSTALLATION

Preparation

⚠ WARNING

To prevent accidental vehicle start-up, which could cause death or serious injury, remove main fuse before proceeding. (00251b)

1. Refer to the Service Manual and follow the instructions given to remove the Maxi® Fuse.
2. Remove the debris deflector from the vehicle. Refer to BELT GUARD/DEBRIS DEFLECTOR; REMOVAL in the Service Manual.

Install Saddlebag Supports

⚠ WARNING

Do not use the 2-1/4 inch fasteners if docking hardware is not installed. Fastener contact with tire can lead to premature tire failure, which could result in death or serious injury. (00574c)

- When installing these saddlebags **without detachables**, use the 3/8-16 x 1-3/8 inch socket head screws (Part Number 1002) provided in the **Hard Saddlebag Kit**.
- When installing these saddlebags **with detachables**, use the 3/8-16 x 2-1/4 inch screws provided in the **Detachable Hardware Kit**.
- See Figure 1. If docking hardware is installed, install the docking points (1) **between** the fender support (2) and the saddlebag support (3).

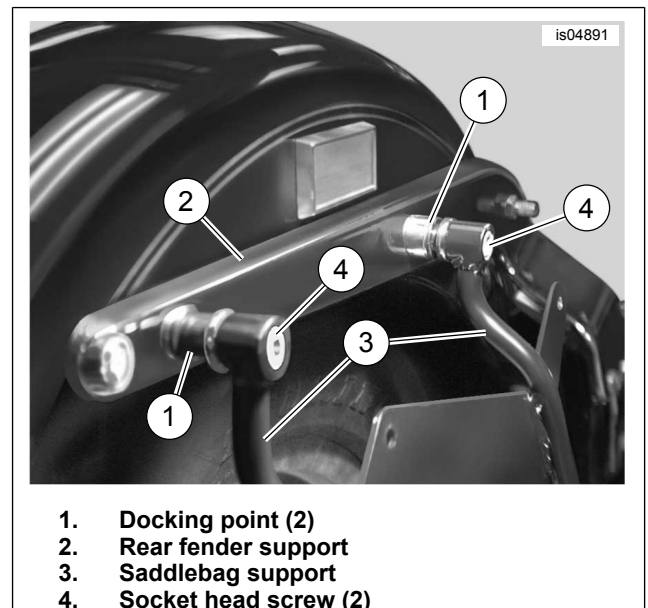


Figure 1. Saddlebag Support With Detachables

1. Install the saddlebag support (3) to the fender support and fender as shown using the correct length socket head screws (4), and tighten the fasteners to 37 N·m (27 ft-lbs) Repeat for the opposite side.

Loosen Exhaust System

NOTE

Splash guard removal will provide easier access to fasteners when removing the exhaust mounting bracket hardware and left side footrest mounting hardware.

1. Remove the hex flange head screw from the bottom of the splash guard at the forward end of the rear fork. Lift up on the lower tabs and pull the lower end of the splash guard rearward. Remove the splash guard from the rear fork.
2. Loosen all four exhaust header flange nuts at the cylinder heads. See Figure 2. Loosen the carriage bolt (4) and locknut (5) retaining the exhaust clamp (3) to the exhaust system support bracket (2) at the transmission case. Slip the clamp out of the slot in the support bracket.

NOTE

The passenger footpeg can remain assembled to the support.

3. Remove the TORX® button head screw (8) and two locknuts (7) that hold the muffler support (6) to the vehicle frame. On models so equipped, remove the screws (10) retaining the exhaust actuator (9) to the muffler support.
4. Swing the exhaust system and muffler support out of the way as needed to access the hex socket head screw (8).
5. See Figure 11. Obtain the **right-side** lower saddlebag support bracket (32), one 3/8-16 x 1-1/4 inch hex head screw (35), one flanged locknut (38) and one shoulder washer (37) from the kit.

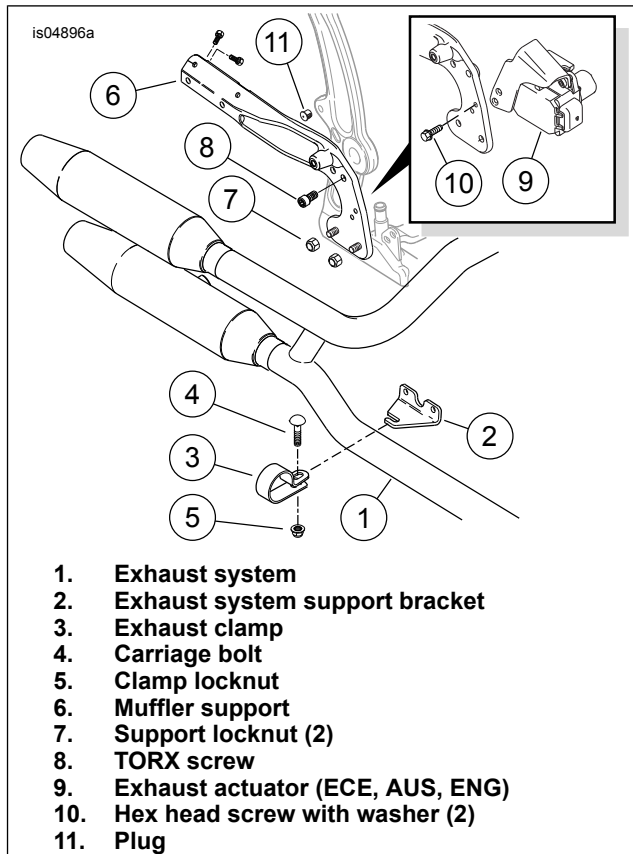


Figure 2. Exhaust System Support Bracket

6. Remove the plug (Figure 2, Item 11) from the threaded hole in the motorcycle frame. Thread the **new** screw all the way through the hole. Tighten the screw to 34–41 N·m (25–30 ft-lbs). Install the saddlebag support bracket over the screw threads, then install the shoulder washer (shoulder first) onto the threads. Fit the shoulder into the hole in the saddlebag support bracket. Thread the flanged locknut onto the screw, but do not fully tighten at this time.

NOTE

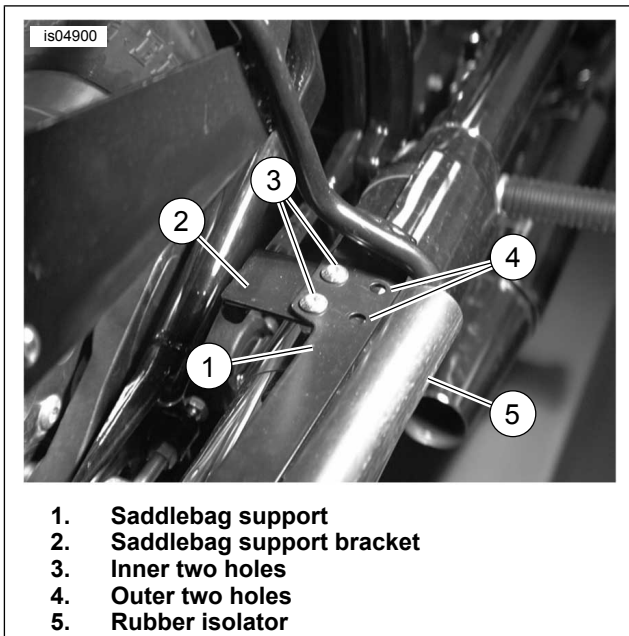
The passenger footpeg can remain assembled to the support.

7. Obtain the left-side lower saddlebag support bracket (31), one 3/8-16 x 1-5/8 inch hex socket screw (34), one flanged locknut (38) and the remaining shoulder washer (37) from the kit. Remove and discard the TORX screw retaining the left-side passenger footpeg support to the vehicle frame.
8. Insert the screw threads through the hole in the footpeg support bracket, and thread all the way through the hole in the frame. Tighten the screw to 34–41 N·m (25–30 ft-lbs). Install the shoulder washer onto the screw threads. Install the saddlebag support bracket over the screw threads, and thread the flanged locknut onto the screw. Do not fully tighten.

Install Brackets to Saddlebag Supports

NOTE

See Figure 3. If docking hardware is installed, use the inner two holes (3) to mount the support bracket (2) to the saddlebag support (1). If docking hardware has not been installed, use the outer two holes. (4)



1. Saddlebag support
2. Saddlebag support bracket
3. Inner two holes
4. Outer two holes
5. Rubber isolator

Figure 3. Install Support Bracket to Saddlebag Support

1. Obtain four 5/16-18 x 5/8 inch screws (39) and four locknuts (43) from the kit. On the right side of the vehicle, install two screws through the saddlebag support and into the support bracket as shown. Install the nuts and tighten to 13.1 N·m (10 ft-lbs). Repeat on the left side of the vehicle.
2. Tighten the left- and right-side lower support bracket mounting locknuts to 34–41 N·m (25–30 ft-lbs).
3. Re-install the splash guard to the front of the rear fork.
4. Re-install and tighten all exhaust mounting brackets and hardware. Refer to EXHAUST SYSTEM; INSTALLATION in the Service Manual.

Prepare Saddlebags for Installation

1. See Figure 3. Install the rubber isolators (5) from the kit over each saddlebag support bracket with the "flat" side facing down.

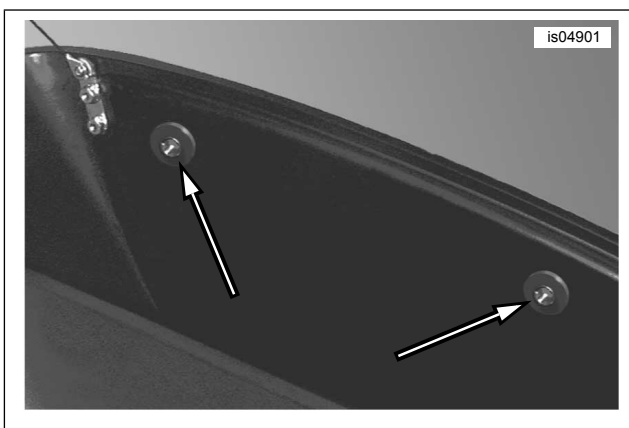
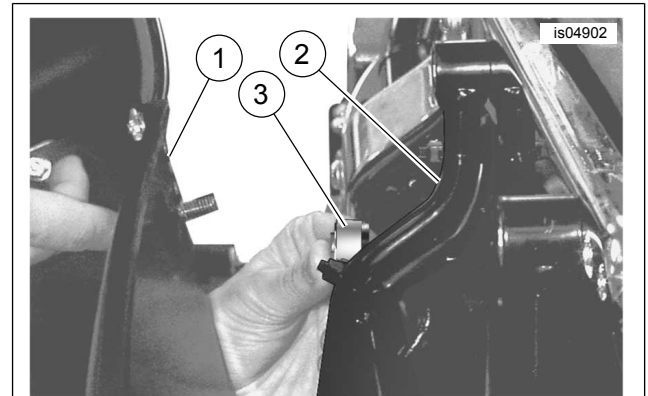


Figure 4. Install Grommets and Sleeves

2. See Figure 4 and Figure 11. Install rubber grommets (45) from the kit into the holes in the side of each saddlebag as shown. Install a steel spacer sleeve (44) into each of the grommets as shown.

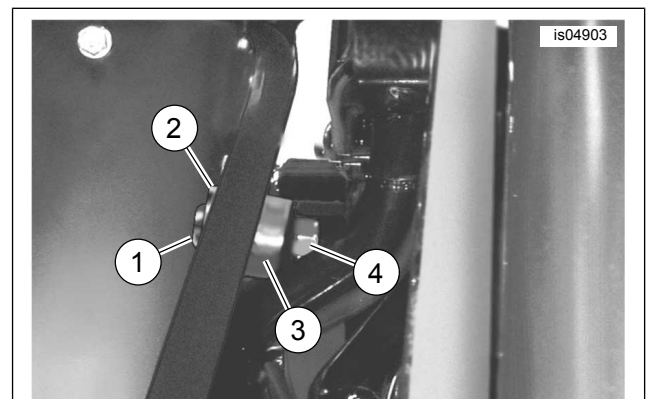
Install Saddlebags To Supports

1. See Figure 11. Obtain four button head screws (40), flat washers (41), aluminum spacers (42) and lock nuts (43) from the kit. See Figure 5. Hold the saddlebag (1) up to the saddlebag support (2), and position a spacer (3) between the saddlebag and support. See Figure 6. Install a screw (1) and flat washer (2) from inside the saddlebag, through the spacer (3), then install a nut (4) onto the screw threads and finger tighten. Repeat for the second spacer.



1. Saddlebag
2. Saddlebag support
3. Spacer

Figure 5. Install Spacer



1. Screw
2. Flat washer
3. Spacer
4. Nut

Figure 6. Secure Saddlebag to Support

2. Ensure that the saddlebag is aligned properly, then tighten the screws and nuts securely.
3. Repeat Steps 18 and 19 for the remaining saddlebag.

Install Reflectors to Saddlebags

⚠ WARNING

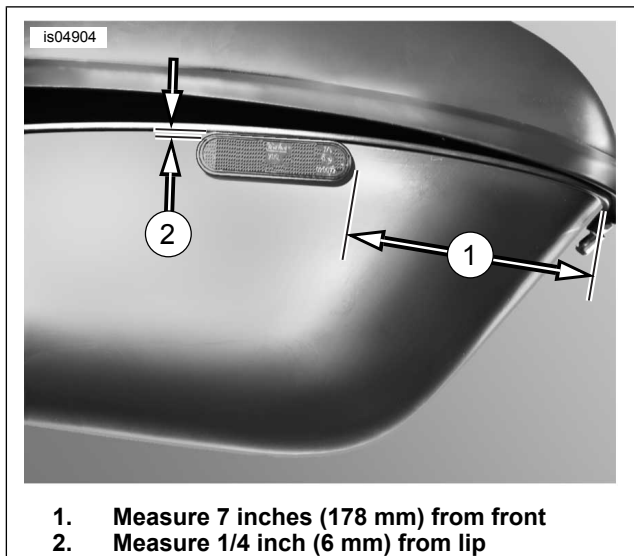
Federal Motor Vehicle Safety Standard (FMVSS) 108 requires motorcycles to be equipped with rear and side reflectors. Be sure rear and side reflectors are properly mounted. Poor visibility of rider to other motorists can result in death or serious injury. (00336b)

NOTE

Red reflectors are provided in this Kit, and must be installed to meet US and Canadian requirements.

Ambient temperature should be **at least** 60° F (16° C) for proper adhesion of the reflectors to the saddlebags.

1. See Figure 7. Locate an area approximately 7 inches (178 mm) from the front (1) and 1/4 inch (6 mm) from the lid lip (2) of the lower section of each saddlebag.



1. Measure 7 inches (178 mm) from front
2. Measure 1/4 inch (6 mm) from lip

Figure 7. Install Reflectors to Saddlebags

2. Clean the reflector areas with a mixture of 50 to 70% isopropyl alcohol and 30 to 50% distilled water. Allow to dry thoroughly. Peel the liner from the adhesive backing of one reflector. Carefully position the reflector to the saddlebag, and press firmly into place. Hold the reflector in position with steady pressure for a few seconds to ensure proper adhesion. Repeat for the remaining saddlebag.

NOTE

Allow **AT LEAST 24 hours** after applying the reflectors before exposing the saddlebags to vigorous washing, strong water spray or extreme weather.

The adhesive bond will increase to maximum strength after about 72 hours at normal room temperature.

Return to Service

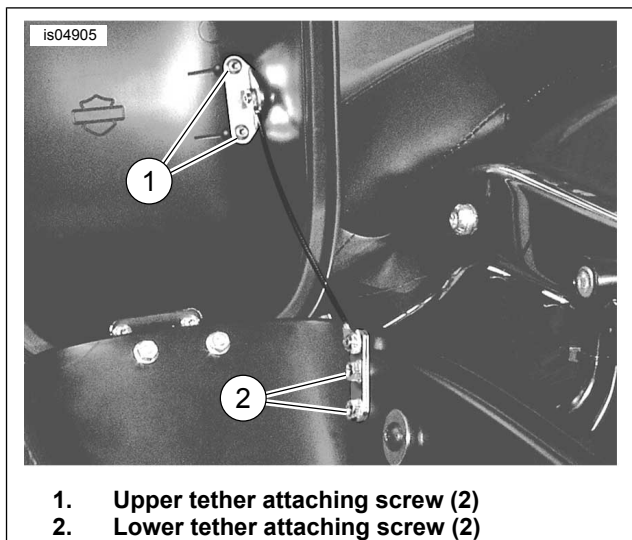
1. Re-install the debris deflector to the vehicle. Refer to BELT GUARD/DEBRIS DEFLECTOR; INSTALLATION in the Service Manual.
2. Verify that the Ignition/Light Key Switch is turned to the OFF position. Refer to the Service Manual and follow the instructions given to re-install the Maxi® Fuse.

HINGE REPLACEMENT (OPTIONAL)

NOTE

The saddlebags are shipped with a hinge and tether for raising and lowering the lid. However, due to various styles of seat or accessories installed, it may be preferable to replace the existing hinges with the optional hinges provided in the kit, which allow complete removal of the lid.

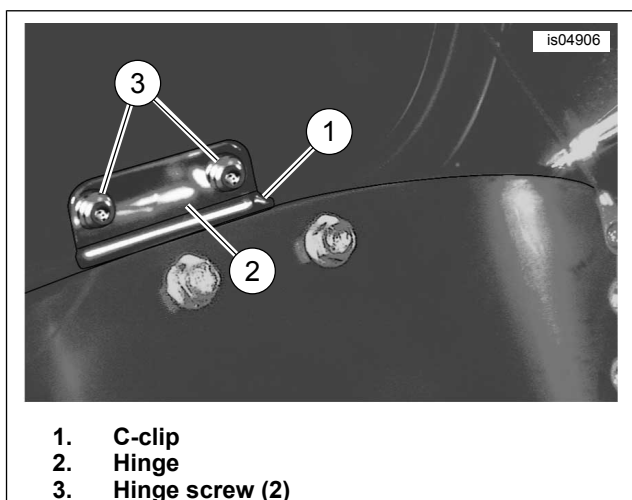
If hinge replacement is desired, perform the following:



1. Upper tether attaching screw (2)
2. Lower tether attaching screw (2)

Figure 8. Remove Tether

1. See Figure 8. Remove the screws (1) securing the upper portion of the tether to the saddlebag lid, and (2) the lower portion of the tether to the saddlebag body. Remove the tether.
2. See Figure 9. Remove the C-clip (1) securing the hinge pin, and remove the pin from the hinge (2). Separate the lid from the saddlebag base.



1. C-clip
2. Hinge
3. Hinge screw (2)

Figure 9. Remove Hinge

3. Remove the two screws (3) securing the hinge to the saddlebag lid and carefully slide the hinge out from under the rubber seal.
4. Obtain the replacement hinge half for the saddlebag lid. Carefully slide the hinge under the rubber seal, and fasten the hinge half to the lid using the screws removed in Step 3. Tighten the screws securely.
5. Install the original pin to the hinge and secure with the C-clip removed in Step 2.
6. Install the lid to the saddlebag base by aligning the hinge halves and close the lid. Pull up on the front of the lid to make sure the lid is fastened securely.

SERVICE PARTS

Table 1. Service Parts Table, Saddlebags

| Item | Description (Quantity) | Part Number |
|------|--|----------------------------|
| 1 | Saddlebag assembly, left (shown) Saddlebag assembly, right (not shown) (includes items 2 through 27) | 90026-YYxxx 90027-YYxxx |
| 2 | • Base, saddlebag (left) Base, saddlebag (right) | 90264-00 90262-00 |
| 3 | • Latch assembly | 90166-00 |
| 4 | • Bracket, latch | 90232-00 |
| 5 | • Cover assembly, latch | 90237-00 |
| 6 | • Screw, pan head TORX®, #10-24 x 3/8 inch (4) | 3018 |
| 7 | • Screw, TORX head, #12-16 x 5/8, high-low, self-tapping (2) | 3596 |
| 8 | • Screw, TORX head, M6-6H, with lock patch (2) | 1394 |
| 9 | • Screw, TORX | 1395 |
| 10 | • Lock set, saddlebag (includes items 10 and 11) | 90235-00A |
| 11 | • Key set (specify code) | 90234-00 |
| 12 | • Gasket, lock (2) | 90290-02 |
| 13 | • Lid, saddlebag (left) Lid, saddlebag (right) | 90261-00 90260-00 |
| 14 | • Catch, hinge | 90172-00 |
| 15 | • Hinge, hook bracket | 90176-00 |
| 16 | • Hinge pin | 90173-00 |
| 17 | • Retaining ring | 11015 |
| 18 | • Loop, latch | 90231-00 |
| 19 | • Screw, TORX head, #12-16 x 5/8, high-low, self-tapping (6) | 3596 |
| 20 | • Gasket | 90230-00 |
| 21 | • Tether | 53633-00 |
| 22 | • Bracket, tether (upper) | 90417-00 |
| 23 | • Bracket, tether (lower) | 90418-00 |
| 24 | • Pan head machine screw, #6-32 x 1/4 inch, with lock patch (2) | 3595 |
| 25 | • Spring washer, 1/4 inch, curved (2) | 6970 |
| 26 | • Screw, pan head TORX, #10-24 x 3/8 inch (2) | 3018 |
| 27 | • Lock nut, flanged, #10-24 (2) | 7878 |

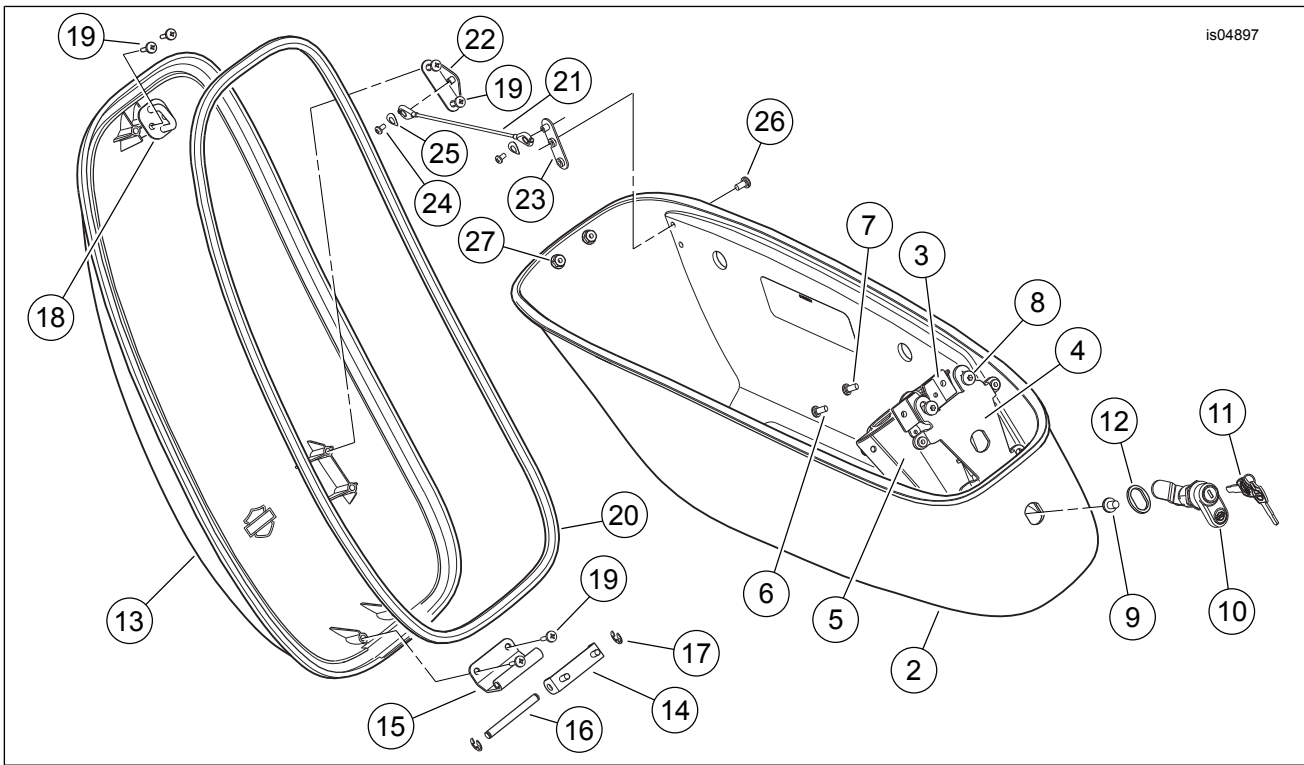


Figure 10. Service Parts, Saddlebags

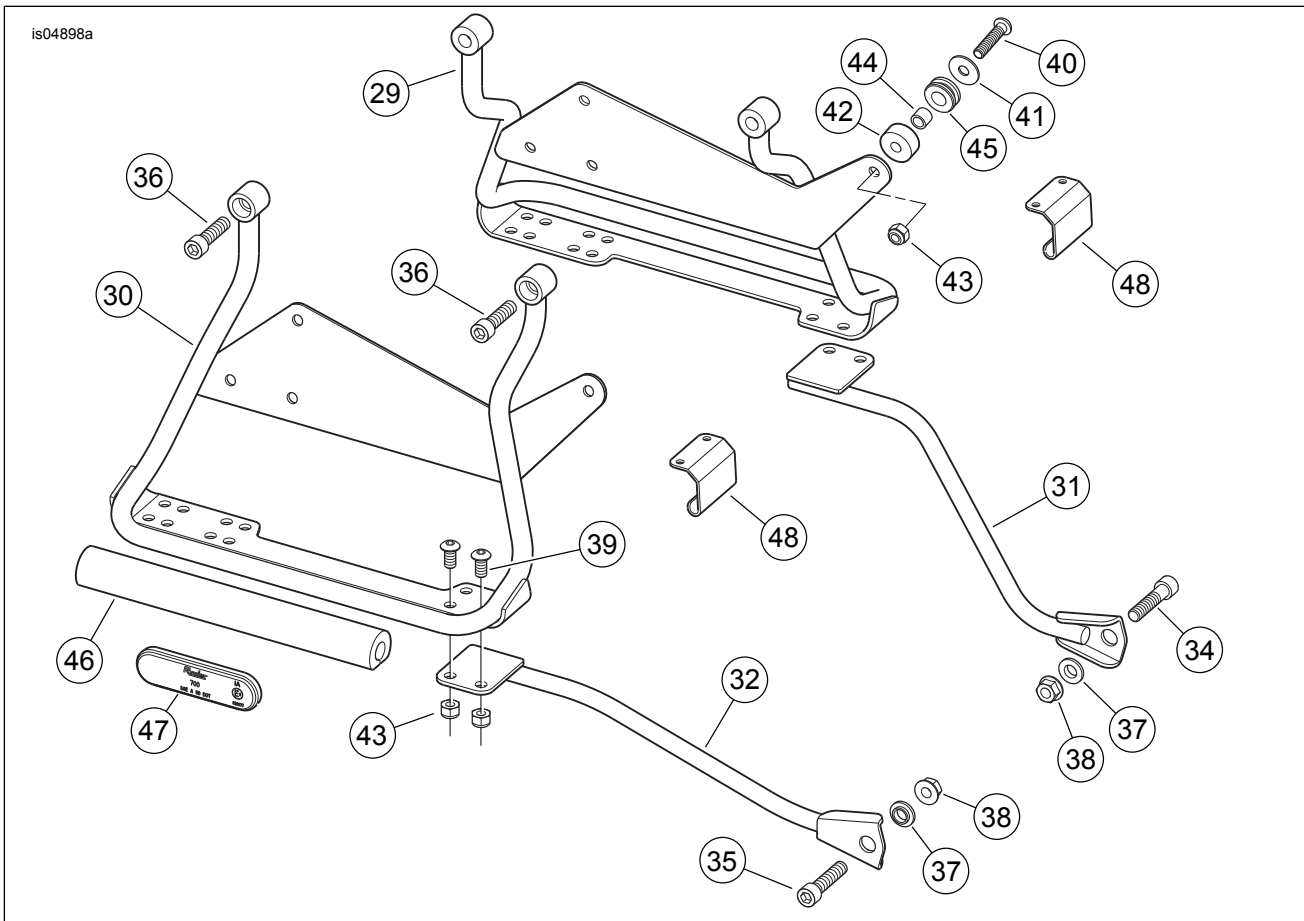


Figure 11. Service Parts, Support Bars and Hardware

SERVICE PARTS

Table 2. Service Parts Table, Support Bars and Hardware

| Item | Description (Quantity) | Part Number |
|------|--|-------------|
| 28 | Saddlebag support bar kit (includes items 29 through 32) | 90805-08 |
| 29 | • Support, saddlebag (left) | 90859-08 |

Table 2. Service Parts Table, Support Bars and Hardware

| Item | Description (Quantity) | Part Number |
|-------------|---|--------------------|
| 30 | • Support, saddlebag (right) | 90855-08 |
| 31 | • Bracket, saddlebag support (left) | 90852-08 |
| 32 | • Bracket, saddlebag support (right) | 90848-08 |
| 33 | Saddlebag hardware kit (includes items 34 through 47) | 90749-05A |
| 34 | • Screw, hex socket head, 3/8-16 x 1-5/8 inch (3) | 4371WA |
| 35 | • Screw, hex head, 3/8-16 x 1-1/4 inch | 3536 |
| 36 | • Screw, hex socket head, 3/8-16 x 1-3/8 inch (4) | 1002 |
| 37 | • Shoulder washer (2) | 5816 |
| 38 | • Lock nut, flanged, 3/8-16 (6) | 7601 |
| 39 | • Screw, hex socket button head, 5/16-18 x 5/8 inch (4) | 3540 |
| 40 | • Screw, hex socket button head, 5/16-18 x 1-3/8 inch (4) | 4214 |
| 41 | • Flat washer (4) | 6213 |
| 42 | • Spacer, aluminum (4) | 90175-00 |
| 43 | • Hex lock nut, 5/16-18, with nylon insert (8) | 7739 |
| 44 | • Spacer sleeve, steel (4) | 90186-00A |
| 45 | • Rubber grommet (4) | 90148-00 |
| 46 | • Isolator, rubber (2) | 90267-00 |
| 47 | • Reflector, red (2) | 59173-00 |
| 48 | • Hinge, open (2) | 90229-00 |