



# INSTRUCTIONS

-J04879

REV. 2009-01-07

## SADDLEBAG HINGE STOP KIT

### GENERAL

#### Kit Number

90580-09

#### Models

For model fitment information, see the P&A Retail Catalog or the Parts and Accessories section of [www.harley-davidson.com](http://www.harley-davidson.com) (English only).

#### Kit Contents

See Figure 2 and Table 1.

### INSTALLATION

1. See Figure 2 and Table 1. Remove the saddlebag by opening the lid and turning the two bail head studs (1) 1/4 turn. Save the washers (A) and discard one of the studs (1). The rear stud and isolator will be replaced with new ones from the kit.

#### NOTE

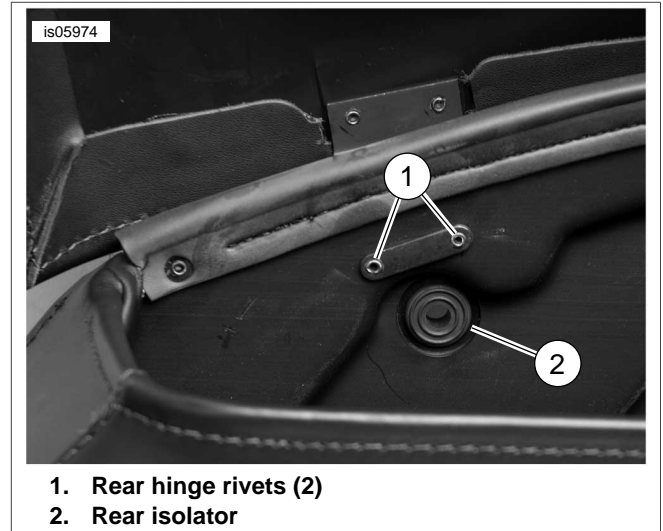
**Do Not** remove the hinge assembly from the saddlebag lid.

2. See Figure 1. Drill the rivets out of the backing plate (C) from the lower rear saddlebag hinge.
- Enlarge the backing plate holes by drilling with a #19 drill bit.
3. Remove the rear isolator and install the new rear isolator (2) from the kit to the saddlebag.

#### NOTE

It is recommended to use *Loctite® 262, threadlocker and sealant on the threads of the hinge screws.*

4. See Figure 2 and Table 1. Position the backing plate (C) inside the saddlebag and align with the rear hinge (B) and hinge stop (3) on the outside of the saddlebag. Assemble using the two TORX® head screws (5).

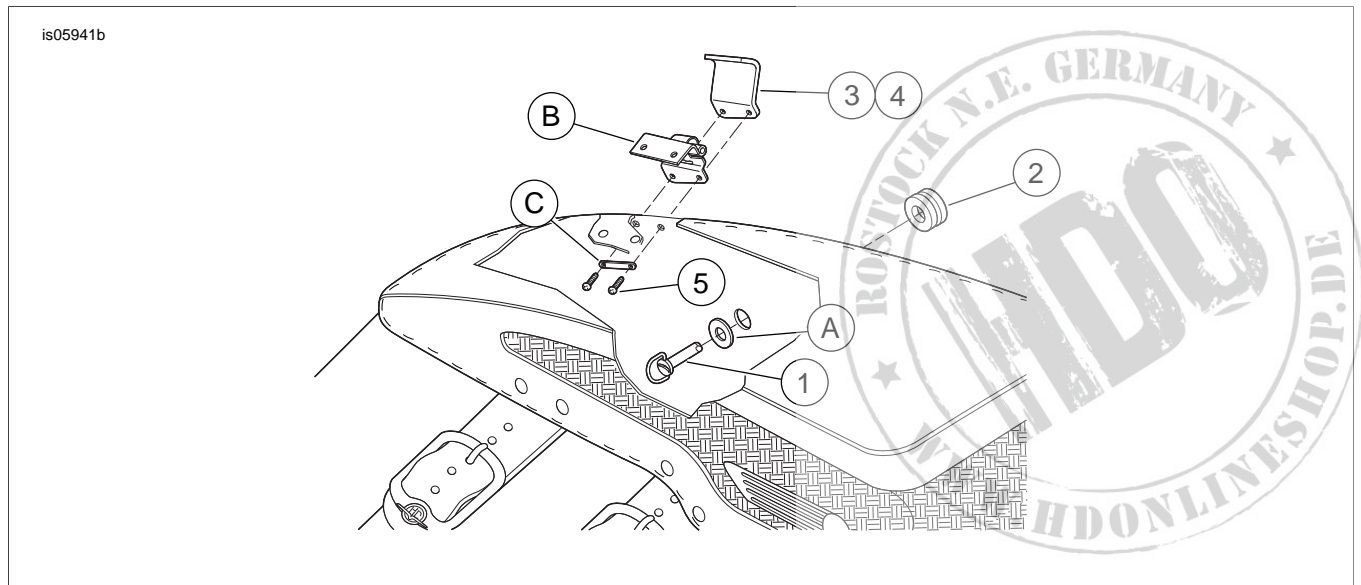


1. Rear hinge rivets (2)
2. Rear isolator

**Figure 1. Drill Out Rivets From Rear Hinge and Backing Plate**

5. Install the saddlebag to the motorcycle using the longer bail head stud (1) from the kit and a washer for the rear of the saddlebag and the washer and front bail head stud previously removed for the front of the saddlebag.
6. Repeat steps 1-5 for the opposite saddlebag.

### SERVICE PARTS



**Figure 2. Service Parts: Saddlebag Hinge Stop Kit**

**Table 1. Service Parts Table**

Item	Description (Quantity)	Part Number	Item	Description (Quantity)
1	Bail head stud (2)	90400-00	<b>Items mentioned in text, but not included in kit:</b>	
2	Saddlebag isolator (2)	11468	A	Washer (2)
3	Hinge stop (right rear)	Not Sold Separately	B	Saddle bag hinge (2)
4	Hinge stop (left rear), (not shown)	Not Sold Separately	C	Backing plate (2)
5	TORX button head cap screw (4)	94587-98	<b>NOTE:</b> Do not remove the hinge assembly from the saddlebag lid. The illustration is to show the stack-up of parts.	

