



# INSTRUCTIONS

-J05561

2016-01-18

## FXSB/SE DETACHABLE SADDLEBAG KITS

### GENERAL

#### Kit Number

90200765, 90200784, 90200816, 90201389

#### Models

For model fitment information, see the P&A Retail Catalog or the Parts and Accessories section of [www.harley-davidson.com](http://www.harley-davidson.com) (English only).

#### Additional Parts Required

**If installing detachable saddlebags only:** Docking kit 52300239 is required for proper installation.

**If installing detachable saddlebags and sideplates/luggage rack:** Docking kits 52300243 and 52300239 are required for proper installation.

Loctite<sup>®</sup> 243 Threadlocker and Sealant - Blue (P/N 99642-97) is required for the proper installation of this kit.

#### ▲ WARNING

The rider's safety depends upon the correct installation of this kit. Use the appropriate service manual procedures. If the procedure is not within your capabilities or you do not have the correct tools, have a Harley-Davidson dealer perform the installation. Improper installation of this kit could result in death or serious injury. (00333a)

#### NOTE

This instruction sheet references service manual information. A service manual for your model motorcycle is required for this installation and is available from a Harley-Davidson Dealer.

#### Kit Contents

See Figure 2 and Table 1.

#### ▲ WARNING

Do not exceed saddlebag weight capacity. Put equal weight in each bag. Too much weight in saddlebags can cause loss of control, which could result in death or serious injury. (00383a)

#### NOTE

Maximum saddlebag weight capacity is 10 pounds (4.55 Kg) per saddlebag.

#### REMOVAL

#### ▲ WARNING

To prevent accidental vehicle start-up, which could cause death or serious injury, remove main fuse before proceeding. (00251b)

1. See the service manual and follow the instructions given to remove the seat and main fuse. Retain all seat mounting hardware.
2. Remove the stock passenger foot pegs and peg supports saving all components except the socket head cap screw. Mark the orientation of the footpeg mounting clevis.

### DOCKING POINT INSTALLATION

#### Install Docking System

1. **If installing detachable saddlebags only:** Follow the instructions provided in docking kit 52300239 to install the docking points to the vehicle fender supports. **If installing detachable saddlebags and sideplates/luggage rack:** Follow the instructions provided in docking kit 52300243 to install the docking points to the vehicle fender supports. This installation will also require parts from kit 52300239.
2. Tighten docking point fasteners 28.5–36.6 N-m (21–27 ft-lbs).

#### Install 3RD Point Mount Bracket

#### NOTE

Assemble the 3<sup>rd</sup> point docking point with the ears of the 3<sup>rd</sup> point mount bracket (3) oriented away from the docking point.

1. **If installing detachable saddlebags only:** See Figure 2. Assemble 3<sup>rd</sup> point mount bracket (3), screw (37), docking point (38), split lockwasher (39), hex nut (16). **If installing detachable saddlebags and sideplates/luggage rack:** See Figure 2. Assemble 3<sup>rd</sup> point mount bracket (3), screw (Q), docking point (38), offset spacer (P), split lock washers (39) and hex nuts (16).
2. Tighten docking point fasteners 28.5–36.6 N-m (21–27 ft-lbs).
3. See Figure 2. Install the 3<sup>rd</sup> point mount bracket assembly.
  - a. Put the 3<sup>rd</sup> point mount bracket assembly over the foot peg mounting boss (A). Orient the assembly so that the docking point (38) is to the rear of the motorcycle and the ears of the 3<sup>rd</sup> point mount bracket straddle the mounting boss.
  - b. Loosely install the 3<sup>rd</sup> point mount bracket assembly, footpeg clevis (B) and screw (17) to the footpeg mounting boss (A).
  - c. Rotate the footpeg clevis to previously marked orientation.
  - d. Tighten screw (17) to 33.9–40.7 N-m (25–30 ft-lbs).

-J05561

Many Harley-Davidson® Parts & Accessories are made of plastics and metals which can be recycled. Please dispose of materials responsibly.

1 / 6

- e. See the service manual. Install the footpeg into the footpeg clevis. Secure with the previously saved hardware.
4. Repeat procedure for opposite side of motorcycle.

## SADDLEBAG ASSEMBLY

### Install Support Arms

#### NOTE

When performing the following procedure, work on a clean or cloth covered surface to protect the saddlebag from scratches or other cosmetic damage.

1. See OPERATION: OPEN SADDLEBAG in this instruction sheet and open the left saddlebag lid.
2. See Figure 2. Align support arm (4) with the four mounting holes of the left saddlebag (1).
3. Secure support arm (4) to saddlebag (1).
  - a. Insert screw (18) through washer (19) and support arm (4) from inside the left saddlebag (1).
  - b. Secure the screw with lockwasher (20) and hex nut (21). Tighten finger-tight. Do not fully tighten at this time.
  - c. Repeat for remaining screws.
  - d. Tighten fasteners to 6.8–10.2 N·m (60–90 in-lbs).
4. Repeat procedure for right saddlebag (2) and support arm (5).

### Install Reflectors

#### NOTE

Do not remove original equipment (OE) reflectors from the motorcycle swingarm. These reflectors are necessary when riding with saddlebags removed.

Ambient temperature should be at least 60° F (16° C) for proper adhesion of the reflectors to the reflector mounts. Do not remove the liner until ready to apply the reflector.

#### ⚠ WARNING

**Federal Motor Vehicle Safety Standard (FMVSS) 108 requires motorcycles to be equipped with rear and side reflectors. Be sure rear and side reflectors are properly mounted. Poor visibility of rider to other motorists can result in death or serious injury. (00336b)**

1. See Figure 2. Position reflector mount (35) near either the lower, forward side of saddlebag or rearward, just above the Harley-Davidson® logo.
2. Mark holes on saddlebag with pen or other suitable tool.
3. Clean the surface of the reflector mount (35) where reflector will be installed with soapy water or a mixture of 50-70% isopropyl alcohol and 30-50% distilled water. Allow to dry thoroughly.
4. Remove the liner from the adhesive backing of the reflector (34). Carefully position the reflector to the reflector mount, and press firmly into place. Hold the reflector in position with steady pressure for at least one minute.

5. Using a suitable tool, make two 3/16 in. holes in saddlebag at locations marked in Step 2.
6. Install reflector mount (35) on saddlebag using two push nuts (36). The push nuts are installed from inside the saddlebag.

#### NOTE

Allow AT LEAST 24 hours after applying the reflector before exposing the area to vigorous washing, strong water spray or extreme weather.

The adhesive bond will increase to maximum strength after about 72 hours at normal room temperature.

### Install Rear Docking Spacer

#### NOTE

Only install the rear docking spacers to the saddlebag assemblies if the saddlebags are the only detachable accessory to be installed and wide docking points are installed at the rearmost docking point positions.

1. See Figure 2. Insert the posts of the rear docking spacer (22) into the rear of the saddlebag bracket.
2. Apply a small amount of Loctite 243 - Blue to the threads of screws (23) approximately 3–6 mm (1/8–1/4 in) from the screw head.
3. Secure the rear docking spacer to the saddlebag bracket with the screws. Tighten snugly.
4. Repeat procedure for the opposite saddlebag.

## FINAL ASSEMBLY

#### NOTE

Make sure that the ignition/light key switch is in the "OFF" position before installing the main fuse/attaching the battery cables.

1. Verify that the ignition/key switch is turned to the "OFF" position.
2. Refer to the service manual and follow the instructions given to install the main fuse.

#### ⚠ WARNING

**After installing seat, pull upward on seat to be sure it is locked in position. While riding, a loose seat can shift causing loss of control, which could result in death or serious injury. (00070b)**

3. Refer to the service manual, and follow instructions to install the seat.

## OPERATION

### Open Saddlebag

1. See Figure 1. Lift both saddlebag lid straps off of the magnetic snap to expose the ratchet latches (2).
2. Lift up on the latch levers (3) to release the ratchet straps (1) from the latch. Repeat for opposite ratchet latch.
3. Pull the ratchet straps up and free of the latches and open the lid.

### Close Saddlebag

1. See Figure 1. Lift each saddlebag lid strap off of the magnetic snap to expose the ratchet latches (2).

2. Push each of the latch levers (3) closed.
3. Align the ratchet straps (1) and then insert them into the tops of the latches (2).
4. When the ratchet strap ends are pushed through the latch, pull them to secure the lid. A "zipping" sound and feel should be heard and felt.
5. Lift the lid to verify that the latches are holding the ratchet straps in place.
6. Lower straps and strap ends and allow them to be secured by the magnetic snaps.

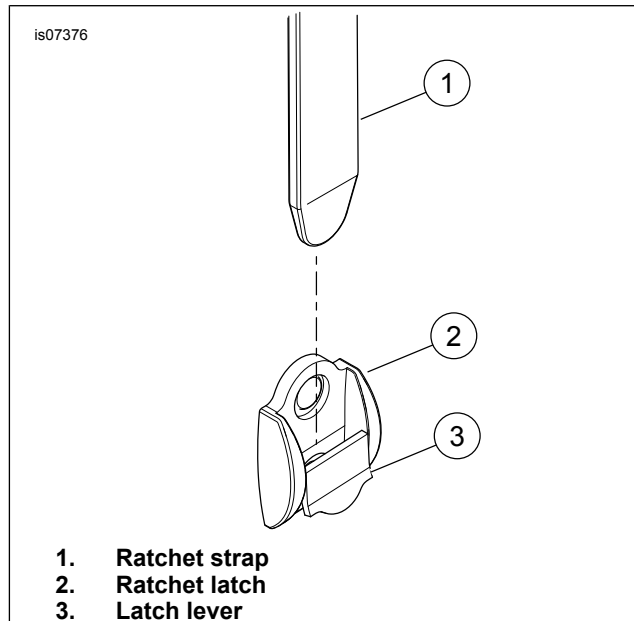


Figure 1. Ratchet Latch

## Install Saddlebags

1. Open the saddlebag lid.
2. See Figure 2. Pull on knob (25) (located near the center, inside saddlebag) and rotate it towards front of saddlebag.
3. Approach the motorcycle with the saddlebag tipped slightly forward and align the support arm slot over the docking clevis at the passenger foot support.
4. Swing body of saddlebag down to align the forward and rear saddlebag bracket slots to the outermost docking points. Slide into slots of bracket on back of saddlebag.
5. Slide the saddlebag rearward on the motorcycle making sure it is fully seated into all three docking locations.
6. Rotate knob roughly 90 degrees rearward relative to the saddlebag until the knob and latch assembly spring-load into place.
7. Repeat for opposite side saddlebag assembly.

### ⚠ WARNING

**Check that saddlebags are completely engaged by pulling lower portion of saddlebag outward (away from bike) after installation. If saddlebags are not completely engaged, they can fall off while riding and cause loss of control, which could result in death or serious injury. (00074a)**

## Remove Saddlebags

1. Open the saddlebag lid.

2. See Figure 2. Pull on knob (25) (located near the center, inside saddlebag) and rotate it towards front of saddlebag.
3. Slide the saddlebag forward on the motorcycle to detach it from all three docking points.
4. Remove the saddlebag from the motorcycle. Store in a clean, protected area. Docking points remain on the motorcycle.
5. Repeat for opposite side saddlebag assembly.

## CARE AND MAINTENANCE

### Docking Point Screws

#### NOTICE

**Failure to tighten hardware to the specified torque could result in damage to the installed accessory. (00508b)**

1. After approximately 500 miles of on road use with the saddlebags installed, it is necessary to check the torque on the docking point mounting screws. Check to make sure the proper torque is maintained and tighten screws as necessary.
  - Tighten docking point screws to 28.5–36.6 N·m (21–27 ft-lbs).
  - Tighten 3<sup>rd</sup> point screws ( Figure 2, item 18) to 6.8–10.2 N·m (60–90 in-lbs).
  - Tighten footpeg mount screws ( Figure 2, item 17) to 33.9–40.7 N·m (25–30 ft-lbs).

### Saddlebag Docking Points

#### NOTE

*In time, the docking points may wear causing the saddlebag connections to become loose. The fit may be tightened using the following procedure:*

1. Note or lightly mark the current rotational orientation of the docking point and remove the docking hardware screws.
2. Clean threadlocker residue off of screw threads. Reapply Loctite 243 (Blue) to first four threads of docking point screws.
3. Install screws loosely.
4. Rotate docking points clockwise approximately 90 degrees from their previous position.

#### NOTE

*This procedure can be repeated only once before replacement of the docking points is recommended.*

*If the co-molded plastic docking point surfaces appear to be cracked or if any piece appears to be missing, replace the docking point immediately. Cracked or missing pieces of the plastic overmold will result in a lot more free play than can be eliminated by rotating the docking points.*

5. Tighten the docking hardware to 28.5–36.6 N·m (21–27 ft-lbs).

# Saddlebag Care

1.

Apply the Harley-Davidson Genuine Leather Dressing included with the saddlebag according to the instructions in the leather care kit. Additional jars are available from a Harley-Davidson dealer (H-D Part Number 98261-91V).

## SERVICE PARTS

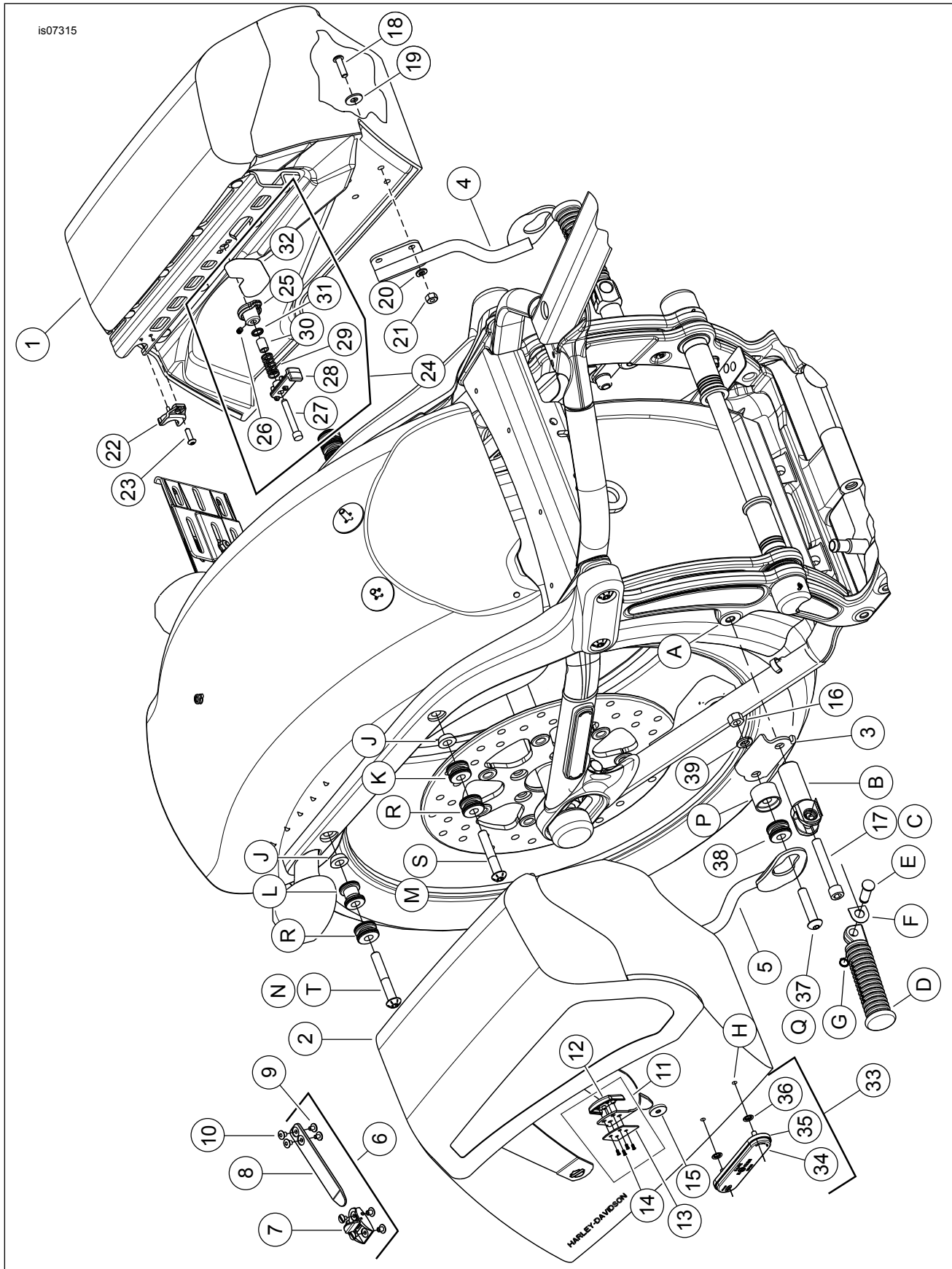


Figure 2. Service Parts: FXSB/SE Detachable Saddlebags

**Table 1. Service Parts Table**

<b>Item</b>	<b>Description (Quantity)</b>	<b>Part Number</b>
1	Saddlebag assembly, black gator, left (includes items 6-15 and 24-32)	90200766
	Saddlebag assembly, brown gator, left (includes items 6-15 and 24-32)	90200785
	Saddlebag assembly, black smooth, left (includes items 6-15 and 24-32)	90200815
	Saddlebag assembly, black, left (includes items 6-15 and 24-32)	90201391
2	Saddlebag assembly, black gator, right (includes items 6-15 and 24-32)	90200767
	Saddlebag assembly, brown gator, right (includes items 6-15 and 24-32)	90200786
	Saddlebag assembly, black smooth, right (includes items 6-15 and 24-32)	90200814
	Saddlebag assembly, black, right (includes items 6-15 and 24-32)	90201390
3	3 <sup>rd</sup> Point mount bracket	90200782
4	3 <sup>rd</sup> Point Support arm, left	90200770
5	3 <sup>rd</sup> Point Support arm, right	90200771
6	Ratchet latch kit (2) (includes items 7 through 10)	90200904
7	• Ratchet latch body (2)	Not Sold Separately
8	• Ratchet strap (2)	Not Sold Separately
9	• Binder post screw, #8-32 X 7/32 in, (8)	Not Sold Separately
10	• Binder post barrel (8)	Not Sold Separately
11	Strap end kit, chrome (2) (includes items 12 through 14)	90200885
	Strap end kit, black (2) (includes items 12 through 14)	90201392
12	• Decorative strap end (2)	Not Sold Separately
13	• Back plate (2)	Not Sold Separately
14	• Screw, strap end M2.5 X 0.45 X 5 mm (8)	Not Sold Separately
15	Magnetic closure kit (2)	Not Sold Separately
16	Nut, hex, 3/8-16 in (2)	7783
17	Screw, socket head, 3/8-16 X 2-1/2 in (2)	4032A
18	Screw, button head, 1/4-20 X 7/8 in (8)	4015
19	Flatwasher, 1/4 in (8)	6235
20	Washer, split lock 1/4 in (8)	7036
21	Nut, hex, 1/4-20 in (8)	7688
22	Docking spacer adapter (2)	88251-07
23	Screw, button head, #10-24 X 5/8 in (2)	4620
24	Saddlebag docking latch kit (2) (includes items 25 through 32)	88257-07B
25	• Knob, docking latch	Not Sold Separately
26	• Set screw, #10-24 X 1/4 in	10200139
27	• Pin, docking latch	Not Sold Separately
28	• Cam, docking latch	Not Sold Separately
29	• Spring, docking latch	Not Sold Separately
30	• Spacer, docking latch	Not Sold Separately
31	• O-ring, docking latch	Not Sold Separately
32	• Label, lock indicator, left	Not Sold Separately
	• Label, lock indicator, right	Not Sold Separately
33	Reflector kit (2) (includes items 34 through 36)	59480-04A
34	• Reflector	Not Sold Separately
35	• Reflector mount	Not Sold Separately
36	• Push nut (2)	8126A
37	Screw, button head, 3/8-16 X 1-1/4 (2)	4098
38	Docking point, mini (2)	53967-06
39	Washer, splitlock 3/8 in (2)	7038
40	Leather dressing (Not shown)	98261-91V
<b>Items mentioned in text, but not included in kit:</b>		
A	Footpeg mount frame boss	
B	Footpeg clevis	
C	Screw, socket head, 3/8-16 X 2-1/4 in	
D	Passenger footpeg	
E	Clevis pin	
F	Spring washer	
G	Retaining ring	
H	Reflector mount holes, 4.75 mm (3/16 in)	
<b>Items found in Docking Kit 52300239:</b>		

**Table 1. Service Parts Table**

<b>Item</b>	<b>Description (Quantity)</b>	<b>Part Number</b>
J	Conical docking spacer (4)	Not Sold Separately
K	Docking point, mini (2)	53967-06
L	Docking point, wide (2)	53684-96A
M	Screw, button head, 3/8-16 X 1-3/4 in (2)	4246
N	Screw, button head, 3/8-16 X 2 in (2)	4118
<b>Items found in Docking Kit 52300243:</b>		
P	Spacer, 3 <sup>rd</sup> -point offset (4)	52300244
Q	Screw, button head, 3/8-16 X 1-3/4 in (2)	4246
R	Docking point, mini (4)	53967-06
S	Screw, button head, 3/8-16 X 2-1/4 in (2)	10200214
T	Screw, button head, 3/8-16 X 2-1/2 in (2)	10200045