



INSTRUCTIONS

-J04849

2010-04-20

AIR WING SADDLEBAG RAILS

GENERAL

Kit Number

88299-09, 90200391

Models

For model fitment information, see the P&A Retail Catalog or the Parts and Accessories section of www.harley-davidson.com (English only).

▲ WARNING

The rider's safety depends upon the correct installation of this kit. If the procedure is not within your capabilities or you do not have the correct tools, have a Harley-Davidson dealer perform the installation. Improper installation of this kit could result in death or serious injury. (00308a)

Kit Contents

See Figure 2 and Table 1.

INSTALLATION

1. See the owner's manual and remove a saddlebag from one side of the motorcycle.
2. See Figure 1. Place the appropriate trim rail (1) for the saddlebag in the approximate mounting position on the cover.
3. Place a piece of 2 inch wide masking tape (2) on cover (under trim rail) at each of the three trim rail mounting points.



Figure 1. Mark Drill Point Locations

4. See Figure 2. Using a scissors or utility knife, cut three mounting pads (12, 13, 14) and three mounting washers (9, 10, 11) from the plastic retainer. Place the appropriate nylon mounting pad (12, 13, 14) over each of the three screw mounts on the trim rail.
5. See Figure 1. Position the appropriate template (removed from instruction sheet) over the tape and under the rear mounting points to the trim rail.
6. Position trim rail in the final location. The distance between the rail and top surface of the cover should be consistent from one end to the other.
7. While holding the trim rail (mounting pads installed) in the desired position mark the mounting locations on the cover.
 - a. Trace around the front mounting point with a felt tip pen.
 - b. Position the template so that the mounting locations indicated on the template match the intended trim rail mounting locations. Tape the template in place.
 - c. Remove the trim rail.
 - d. Mark the center of traced circle and template indicated drill points with a center punch.
 - e. Remove the template.
8. Drill a 1/16 inch pilot hole at each mounting point.
9. Enlarge the front mounting hole and the smaller rear mounting hole with a 7/32 inch drill bit. Enlarge the larger rear mounting hole with a 3/8 inch drill bit.
10. See Figure 2. Install trim rail with mounting pads (12, 13, 14) to saddlebag cover with screws (3), lockwashers (4), washers (5), and nylon mounting washers (9 or 10). Do not tighten screws.

NOTE

Nylon mounting pads and washers should compress only slightly when screws are properly secure.

11. Install hollow screw (6), washer (7), and nylon mounting washers (11).
12. Tighten screws (3) to 3.1–3.5 N·m (27–31 in-lbs). Tighten hollow screw (6) to 3.4–5.6 N·m (30–50 in-lbs).
13. Repeat procedure for opposite side saddlebag trim rail.

NOTICE

The trim rail is not intended for cargo. To prevent damage, do not strap cargo to the trim rail. (00603d)

SERVICE PARTS

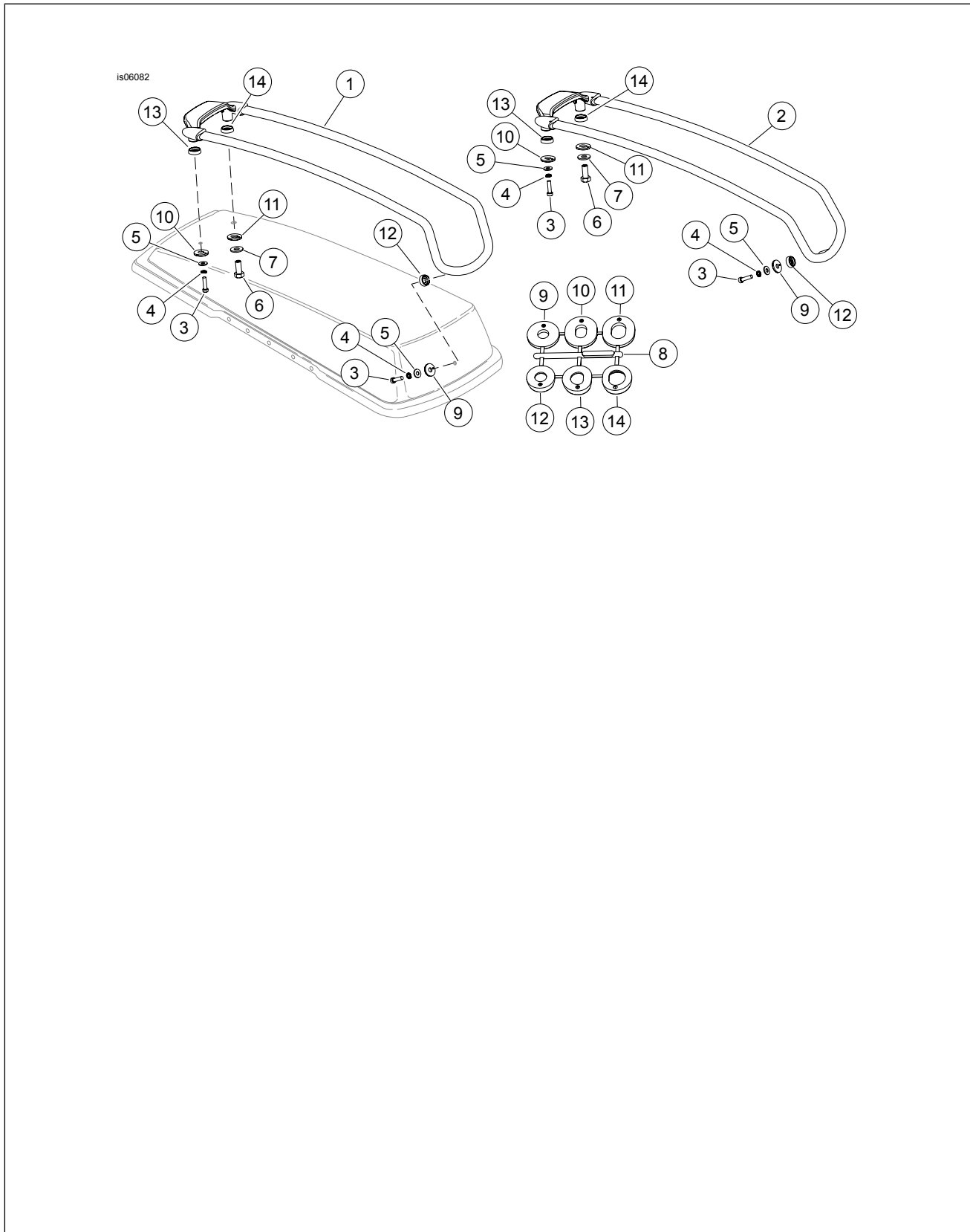


Figure 2. Service Parts for Air Wing Saddlebag Trim Rail Kit

Table 1. Service Parts Table

Item	Description (Quantity)	Part Number
1	Trim rail, right (chrome)	88338-09
	Trim rail, right (black)	90200393

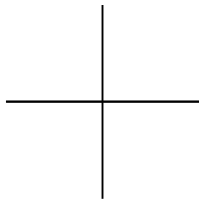
Table 1. Service Parts Table

Item	Description (Quantity)	Part Number
2	Trim rail, left (chrome)	88339-09
	Trim rail, left (black)	90200392
3	Screw, fillister head (4)	1205
4	Lockwasher (4)	7069
5	Washer, plain (4)	6716
6	Screw, hex head, hollow (2)	4860
7	Washer, plain (2)	6235
8	Mounting pad and washer set	88347-09
9	• Nylon washer, front	Not Sold Separately
10	• Nylon washer, rear, solid screw	Not Sold Separately
11	• Nylon washer, rear, hollow screw	Not Sold Separately
12	• Mounting pad, front	Not Sold Separately
13	• Mounting pad, rear, solid screw	Not Sold Separately
14	• Mounting pad, rear, hollow screw	Not Sold Separately

TEMPLATE

is06293

This template is not to scale unless the two lines below both measure 1 in (25.4 mm) in length.

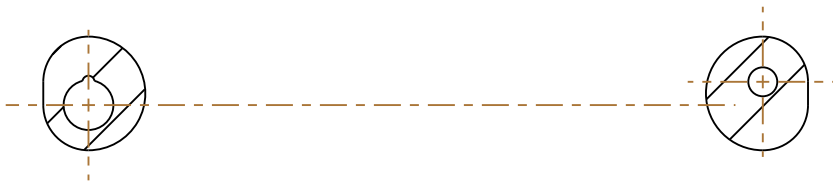


↑ Front of Motorcycle ↑



Left Side

↑ Front of Motorcycle ↑



Right Side

Figure 3. Template