



INSTRUCTIONS

-J04554

2007-12-14

SCREAMIN' EAGLE STREET PERFORMANCE TOURING ENDCAP MUFFLER KIT

GENERAL

Kit Number

80611-09

Models

For the most up-to-date model fitment information, please see the P&A Retail Catalog or the Parts and Accessories section of www.harley-davidson.com (English only).

Additional Parts Required

▲ WARNING

The rider's safety depends upon the correct installation of this kit. Use the appropriate service manual procedures. If the procedure is not within your capabilities or you do not have the correct tools, have a Harley-Davidson dealer perform the installation. Improper installation of this kit could result in death or serious injury. (00333a)

Kit Contents

See Figure 1 and Table 1.

NOTE

This product should be checked for repair or replacement if the motorcycle noise has increased significantly through use. Otherwise, the owner may become subject to penalties under state and local ordinances.

Installation

1. See Figure 1. Slide the three clip nuts (4) onto the bosses of the inner sleeve (1).

NOTE

Failing to tighten the screws in a cross pattern may cause a gap between the endcap and muffler.

2. Align the inner sleeve to the back of the muffler with the drain hole (A) down. Install the four socket head cap screws (3) and tighten in a **cross pattern** to 9.3–9.7 N·m (82–86 in-lbs).
3. Slide the outer sleeve (2) over the inner sleeve aligning the mounting holes and the drain holes.

NOTE

The three flat head screws (5) in the end caps can be removed for cleaning.

4. Install the three flat head screws (5) and tighten screws securely.

5. Repeat for opposite side.

NOTICE

Wipe all fingerprints off of exhaust system components after installation and before starting engine. Oil from hands can leave permanent marks on exhaust system finish. (00346a)

6. Wipe muffler clean of all fingerprints. Oil from hands will burn permanently into chrome finish.

SERVICE PARTS

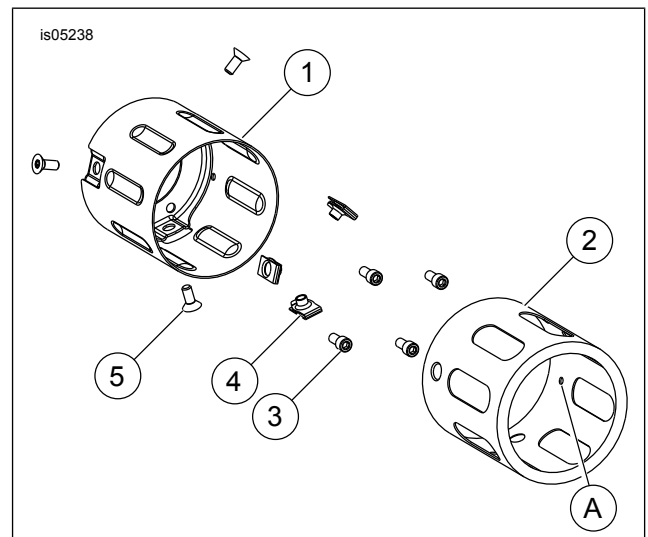


Figure 1. Service Parts: Touring Endcap Muffler Kit

Table 1. Service Parts

Item	Description (Quantity)	Part Number
1	Inner sleeve	Not Sold Separately
2	Outer sleeve	Not Sold Separately
3	Screw, socket head 1/4-20 x 0.5 inch (8)	9493
4	Clip nut (6)	8146
5	Screw, flat head 1/4-20 x 0.63 inch (6)	2225
A	Drain hole (2)	

