



# INSTALLATION

## CRUISE ARM MARK IV

## 7840

### PARTS INCLUDED

- 1 Right Extension Arm Assembly, Standard Length
- 1 Left Extension Arm Assembly, Standard Length
- 1 Left Side Mount Block
- 1 Right Side Mount Block
- 1 Cruise Arm Support
- 1 Hardware Kit Containing:
  - 2 3/8"-16 x 1-1/2" Socket Head Cap Screws
  - 2 3/8"-16 x 1" Socket Head Cap Screws
  - 4 3/8" Flat Washer
  - 2 3/8"-16 Nylock Nut
  - 2 5/16"-24 x 1" Setscrews
  - 2 Anti-Seize Packets
- 1 Installation Instructions

Please read and understand entire instructions before starting installation.

### THANK YOU FOR CHOOSING KÜRYAKYN!

**IN ORDER TO PROTECT YOU AND OTHERS FROM POSSIBLE INJURY AND/OR PROPERTY DAMAGE OR LOSS, PLEASE PAY CLOSE ATTENTION TO ALL INSTRUCTIONS, WARNINGS, CAUTIONS AND NOTICES REGARDING THE USE AND CARE OF THIS PRODUCT.**

#### **WARNING**

**THIS INDICATION ALERTS YOU TO THE FACT THAT IGNORING THE CONTENTS DESCRIBED HEREIN CAN RESULT IN POTENTIAL DEATH OR SERIOUS INJURY.**

#### **NOTICE**

**This indication alerts you to the fact that ignoring the contents described herein may negatively affect product performance and functionality.**

#### **NOTICE**

**IF INSTALLING THIS PRODUCT FOR ANOTHER PARTY, PLEASE MAKE SURE THEY RECEIVE THIS COPY OF THE INSTALLATION INSTRUCTIONS SO THEY ARE AWARE OF THE IMPORTANT INFORMATION CONTAINED IN THEM.**

### TOOLS SUGGESTED

Set of Hex Wrenches, Set of Combination Wrenches

**STRICTLY OBSERVE THE FOLLOWING GUIDELINES IN ORDER TO USE THE PRODUCT PROPERLY AND AVOID POTENTIALLY DANGEROUS ACCIDENTS.**

#### **STEP 1**

Read and understand all steps in the instructions before starting the installation. Park the motorcycle on a hard, level surface and turn off the ignition. Let cool.

**NOTE: Adjustment is limited on '07 and Later Models. This product is not compatible with oil coolers.**

#### **WARNING**

**YOU WILL BE WORKING AROUND THE ENGINE AND EXHAUST SYSTEM DURING INSTALLATION. ENSURE THAT THE ENGINE AND EXHAUST SYSTEM HAVE FULLY COOLED TO PREVENT INJURY.**

### CUSTOMER SERVICE

877.370.3604 (toll free)

### INSTALLATION QUESTIONS

techsupport@kuryakyn.com  
or call 715.247.2983

### LIMITED WARRANTY

Kuryakyn warrants that any Kuryakyn products sold hereunder, shall be free of defects in materials and workmanship for a period of one (1) year from the date of purchase by the consumer excepting the following provisions:

- Kuryakyn shall have no obligation in the event the customer is unable to provide a receipt showing the date the customer purchased the product(s).
  - The product must be properly installed, maintained and operated under normal conditions.
  - Kuryakyn makes no warranty, expressed or implied, with respect to any gold plated products.
  - Kuryakyn shall not be liable for any consequential and incidental damages, including labor and paint, resulting from failure of a Kuryakyn product, failure to deliver, delay in delivery, delivery in nonconforming condition, or for any breach of contract or duty between Kuryakyn and a customer.
- Kuryakyn products are often intended for use in specific applications. Kuryakyn makes no warranty if a Kuryakyn product is used in applications other than intended.
- Kuryakyn electrical products are warranted for one (1) year from the date of purchase by the consumer. L.E.D.'S contained in components of Kuryakyn products will be warranted for defects in materials and workmanship for 3 years from the date of purchase where as all other components shall be warranted for one(1) year. This includes, but is not limited to; control modules, wiring, chrome & other components.
- Kuryakyn makes no warranty of any kind in regard to other manufacturer's products distributed by Kuryakyn. Kuryakyn will pass on all warranties made by the manufacturer and where possible, will expedite the claim on behalf of the customer, but ultimately, responsibility for disposition of the warranty claim lies with the manufacturer.

### ABOUT OUR CATALOG

For purchasing Kuryakyn® products, you can receive a complete catalog free of charge.

Send the Proof-of-Purchase below with your address to: Kuryakyn, P.O. Box 339, Somerset, WI 54025.

Please indicate either Accessories Catalog for Harley-Davidson® or GL & Metric Cruisers.

Be sure to ask your local dealer about other Kuryakyn® products, the motorcycle parts and accessories designed for riders by riders.

©2005 Kuryakyn USA® All Rights reserved.

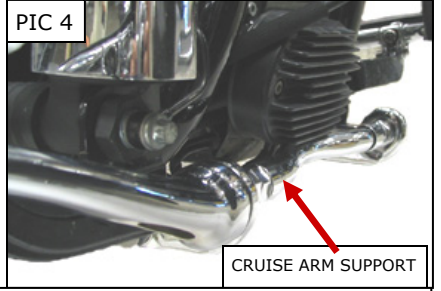
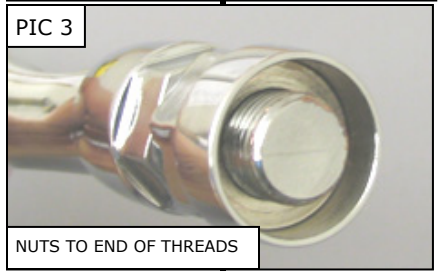
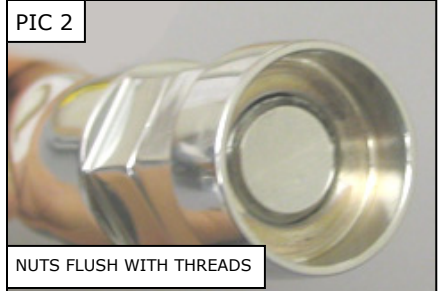
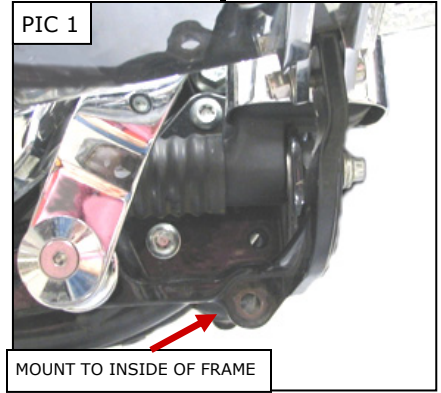


kuryakyn.com

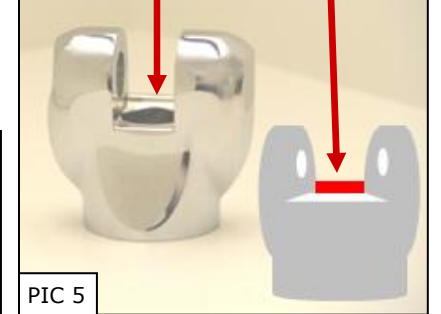


**A FACTORY SERVICE MANUAL WILL BE HELPFUL IN PERFORMING THIS INSTALLATION. DO NOT ATTEMPT TO PERFORM THIS INSTALLATION IF YOU ARE NOT CONFIDENT IN YOUR ABILITY TO COMPLETE ALL OF THE STEPS IN THE PROCEDURE; CONSULT A TRAINED TECHNICIAN. IMPROPER INSTALLATION COULD RESULT IN SERIOUS INJURY OR DEATH.**

- STEP 2** Install the set screws into the bottom of the mount blocks, then attach each mount block to the inside of the frame using 3/8"-16 x 1-1/2" fasteners. The correct mounting location is shown in PIC.1.
- STEP 3** Attach each extension arm assembly to the mount blocks with 3/8"-16 x 1" fasteners.
- STEP 4** On one side of the cruise arm support, back the nuts off until the bottom of the skirted nut is flush with the end of the threaded shaft. On the opposite side of the cruise arm support, tighten the nuts down to the end of the threaded shaft. PIC 2 and PIC 3
- STEP 5** Install the cruise arm support between the cruise arms; the skirted nuts fit over the cruise arm fasteners. Adjust the nuts on the cruise arm support until the support is centered between the cruise arms and the nuts are secure. PIC 4
- STEP 6** Adjust the cruise arms for comfort. Be sure both cruise arms are parallel and that they do not interfere with proper operation of the brake or shifter. FIG 1
- STEP 7** Install the footpegs (sold separately) and adjust the angle of the footpeg by either tightening or backing out the set screw. FIG 1



THE MALE PEG MOUNT STOP PREVENTS THE FOOT PEG FROM INTERFERING WITH BRAKE AND SHIFT LEVERS WHEN FOLDED UP.



**NOTE: Position the Spitfire Clevis so the peg mount stop is on the topside, regardless of which side the clevis is installed on the bike. (See PIC.6)**



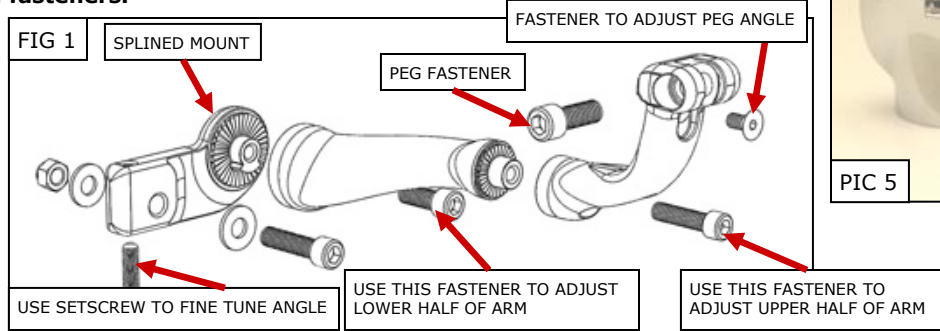
**POSITION THE MARK IV ARMS AND PEGS SO THEY DO NOT INTERFERE WITH THE OPERATION OF THE FOOT CONTROLS. INTERFERENCE WITH THE FOOT CONTROLS MAY CAUSE LOSS OF CONTROL RESULTING IN SERIOUS INJURY OR DEATH.**



**CHECK TO MAKE SURE THAT THERE IS PROPER GROUND CLEARANCE FOR CORNERING. LOSS OF CONTROL OF THE MOTORCYCLE AND SERIOUS INJURY MAY OCCUR IF THE PEG/ARM IS NOT POSITIONED PROPERLY. REPOSITION THE MARK IV MOUNT IF NECESSARY SO THAT THERE IS ADEQUATE CORNERING CLEARANCE.**



**It is the installer's responsibility to ensure that all of the fasteners (including pre-assembled) are tightened before operation of the motorcycle. Kuryakyn will not provide warranty coverage on products or components lost due to improper installation or lack of maintenance. Periodic inspection and maintenance are required on all fasteners.**



*Ride On!*