



# INSTRUCTIONS

-J04929

REV. 2009-07-13

## BOOM! AUDIO MUSIC AND INTERCOM KIT

### GENERAL

#### Kit Number

77107-09

#### Models

For model fitment information, see the P&A retail catalog or the Parts and Accessories section of [www.harley-davidson.com](http://www.harley-davidson.com) (English only).

#### Additional Parts Required

Intercom system flash (Part No. 76441-06DT)

### WARNING

The rider's safety depends upon the correct installation of this kit. Use the appropriate service manual procedures. If the procedure is not within your capabilities or you do not have the correct tools, have a Harley-Davidson dealer perform the installation. Improper installation of this kit could result in death or serious injury. (00333a)

#### NOTE

This instruction sheet refers to service manual information. A service manual for this year/model motorcycle is required for this installation and is available from a Harley-Davidson dealer.

#### Kit Contents

See Figure 7 and Table 1.

### REMOVAL

1. Refer to the service manual and remove the following:
  - a. Main fuse.
  - b. Outer fairing.
  - c. Seat.
  - d. Fuel tank and console.
  - e. Inner fairing cap.
  - f. Wire trough cover.
  - g. Left-hand control.
  - h. Left side saddlebag.

### INSTALLATION

#### Install Switch Housing on Passenger Headset Harness

1. See Figure 1. Install push-to-talk switch housing (2) to passenger headset plug housing (3), included as part of overlay wire harness (Part No. 77109-09).

2. Position the switch housing so the knob is located close to the flip cap on the passenger headset connector.
3. Install self-tapping screws (1) to the switch housing but do not torque. Location adjustment may be required based on the motorcycle model, seats and accessories installed on the vehicle.

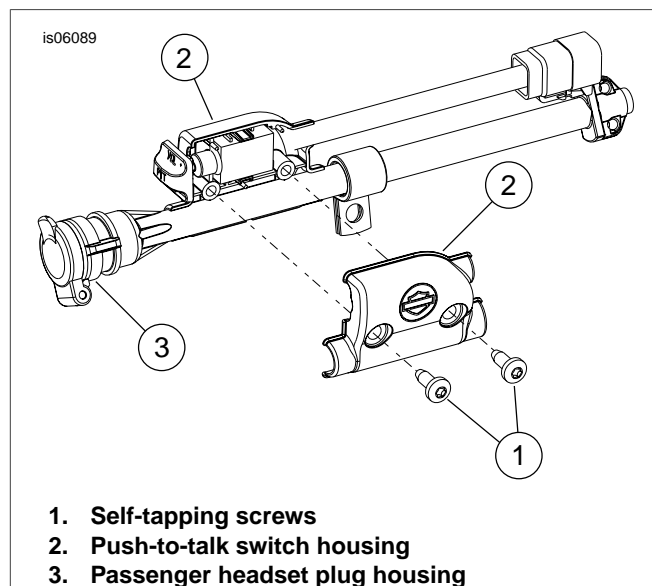


Figure 1. Install Push-to-Talk Switch Housing

#### Install Push-to-Talk/Audio Left-Hand Control and Speaker Selection Switch

4. Refer to the service manual to install the Push-to-Talk/Audio left-hand control and speaker selector switch and adapter wire.

#### Route Overlay Harness

5. Remove the P-clamp fastener that secures the wire harness on the left side of the frame near the steering head.
6. Connect the 35-way radio connector [28] to the back of the radio.
7. Refer to the service manual for your model motorcycle and connect the 6-way audio harness connector [6] to the fairing harness connector.
8. Refer to the service manual for instructions to secure the overlay harness inside the fairing.
9. Route the passenger headset end of the harness through the inner fairing and through the left frame P-clamp. Replace the P-clamp fastener.
10. Route the harness down the frame backbone to the inside of the harness trough.

11. See Figure 1. Route the 6-way connector [41], push-to-talk switch housing (2) and passenger headset plug housing (3) connector [76] down the left side to the rear fender support cover.
12. Double back the harness so the headset plug housing (3) flip-lid faces the front of the vehicle.

### Secure Headset Connector and Switch Housing

#### NOTE

See Figure 7 and Table 1. Install a P-clamp from the kit to the passenger headset connector behind the switch housing.

#### 13. 2006-2008 FLHX, FLTR, FLHT/C models:

For motorcycles WITHOUT docking hardware, use the fender support cover fastener to install the P-clamp.

For vehicles WITH docking hardware, use the front docking point fastener. Install P-clamp between the outside face of the docking point behind the screw and washer.

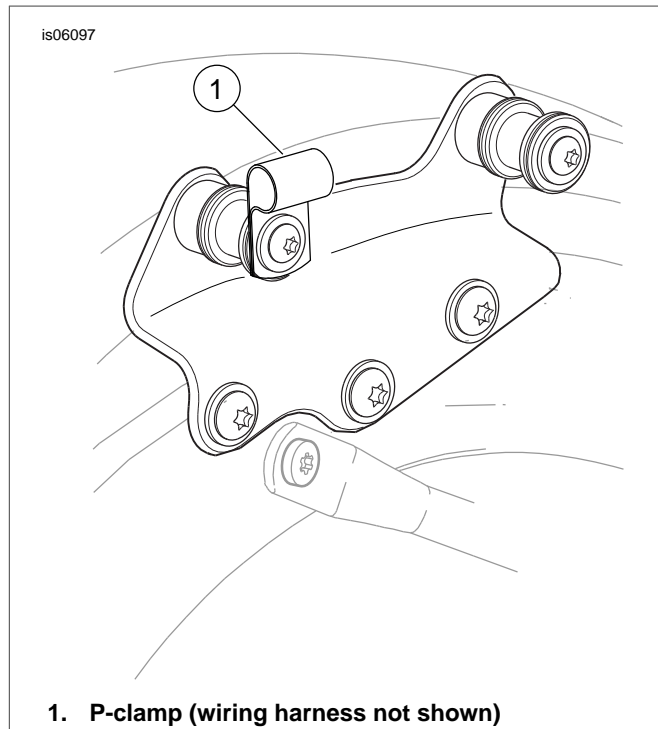
#### 14. 2009-later FLHX, FLTR, FLHT/C models: See Figure 2.

For motorcycles WITHOUT docking hardware use the threaded hole in the frame using screw (4), washer (3), spacer (2) and P-clamp (5).

See Figure 3. For motorcycles WITH docking hardware use the front docking point as shown. Install the P-clamp to the outer end of the docking point using the docking point washer and screw.

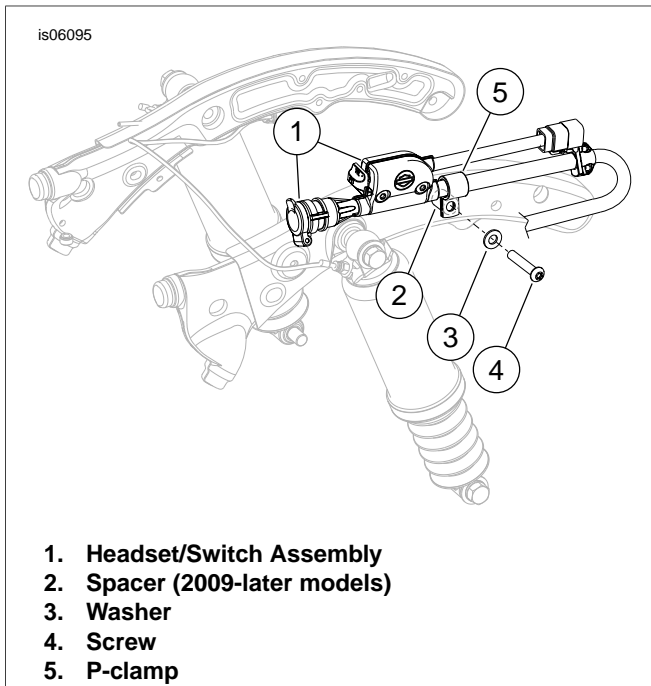
See Figure 4. For TRIKE models without the Tour-Pak (FLHXXX): The headset/switch assembly (1) will be secured to the frame with the P-clamp (2) and 1/2 inch screw (3) at the location shown.

You can now tighten the self-tapping screws installed to the switch housing in Step 3.



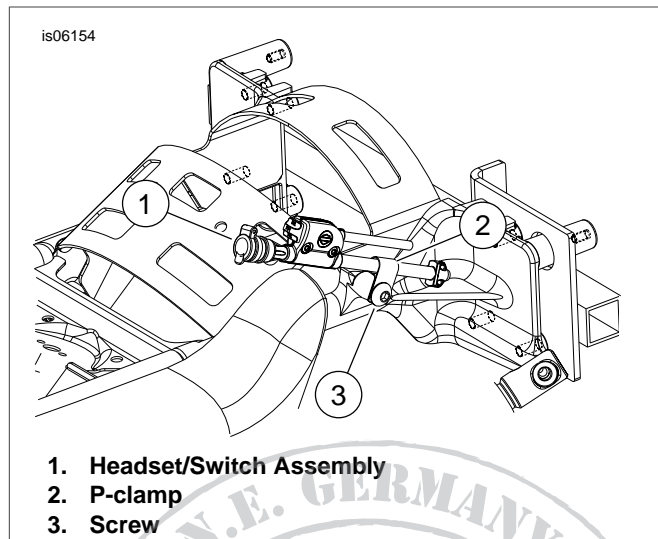
1. P-clamp (wiring harness not shown)

Figure 3. Installation With Docking Points



1. Headset/Switch Assembly
2. Spacer (2009-later models)
3. Washer
4. Screw
5. P-clamp

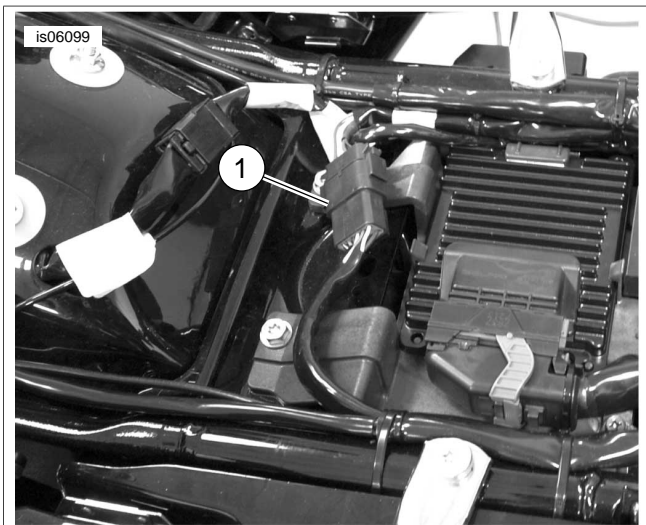
Figure 2. Installation Without Docking Points



1. Headset/Switch Assembly
2. P-clamp
3. Screw

Figure 4. Installation on Trikes Without Tour-Pak



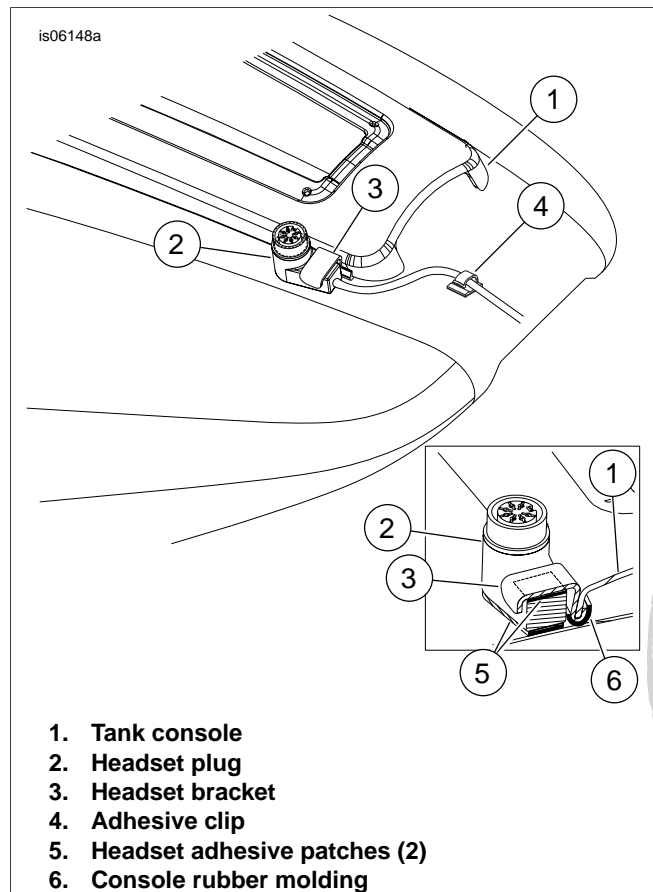


1. 12-way connector

Figure 5. 12-Way Connector of Overlay Harness

### Install Rider Headset Connector

15. See Figure 5. Connect the rider headset harness from the kit to the 12-way connector of the overlay harness.
16. Route the harness up the left side of the frame tube about 6 inches past the lower console mount fastener.
17. Install the fuel tank according to service manual instructions.



1. Tank console
2. Headset plug
3. Headset bracket
4. Adhesive clip
5. Headset adhesive patches (2)
6. Console rubber molding

Figure 6. Mounting Rider Headset Plug

18. See Figure 5. Clean the clip mounting area with a mixture of 50 to 70% isopropyl alcohol and 30 to 50% distilled water. Allow to dry thoroughly. The adhesive clip will be secured to the lower portion of the fuel tank, so it will be covered by the seat.
  - a. Install the clip (4) on the wire harness. Do not remove the adhesive backer at this time.
  - b. Install the narrow end of the headset bracket (3) between the console molding strip and the console at the lower left corner of the console as shown in Figure 5.
  - c. Trim the adhesive patch (5) to the shape of the back of the headset plug (2), remove one side of backer and apply to the back of the connector plug to protect the tank from scuffing.  
Trim the adhesive patch to a 1/2 inch x 1/4 inch rectangle. Remove one side of the backer and apply to the underside of the bracket as shown in Figure 6.
  - d. Position the headset connector facing up and use the wider end of the bracket to secure the flat portion of the headset connector as shown.
  - e. Remove the backer from the other side of the patches to secure the bracket to the connector and connector to the fuel tank.
  - f. Install the adhesive back clip (4) as shown in Figure 5. Remove the adhesive backer from the clip and install the clip onto the fuel tank where it will be covered by the seat.

#### NOTE

Allow AT LEAST 24 hours after applying the clip before exposing the area to vigorous washing, strong water spray or extreme weather.

19. Install the weather cap assembly on the rider headset connector by installing the locking ring inside the flip cap.

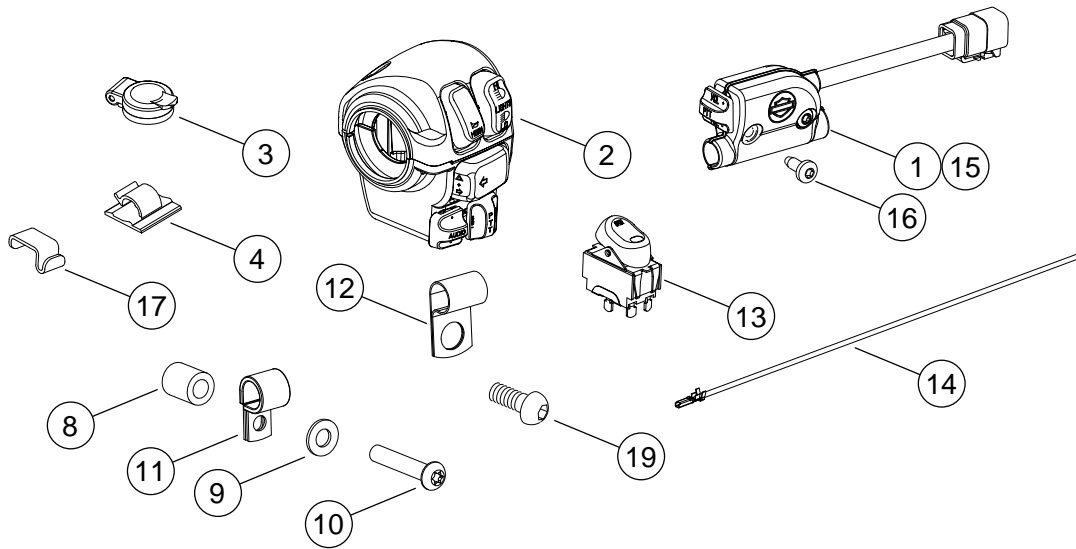
#### NOTE

For a more integrated appearance of the rider headset connector, the console may be replaced using an Ultra Classic Electra Glide console and/or console pod. See FLHTCU parts manual for applicable parts, and service manual for installation instructions.

20. Secure all wiring with cable straps as needed. Check the motorcycle to verify that the wire harness does not interfere with the steering, suspension travel or any other moving parts of the motorcycle.
21. Refer to the service manual to install all the components removed in Step 1.

## SERVICE PARTS

is06109



**Figure 7. Service Parts: Non-TourPak Communication Switch Kit**

**Table 1. Service Parts**

Item	Description (Quantity)	Part Number
1	Switch sub-assembly	Not Sold Separately
2	Left hand control, PTT/Audio	Not Sold Separately
3	Weather cap assembly (2)	76266-98
4	Adhesive back clip	10325
5	Cable strap, (not shown), (10)	10006
6	Com switch wire harness, (not shown)	Not Sold Separately
7	Headset harness, 7 pin, (not shown)	77121-08
8	Spacer	5689
9	Washer	94066-90T
10	Button head screw, 5/16 in.	4334
11	Cushion clamp	9990W
12	Cushion clamp	10053
13	Speaker selector switch	77092-98
14	Wire adapter	77174-06
15	Switch housing	77110-09
16	Screw, self-tapping	3152
17	Rider headset bracket	Not Sold Separately
18	Adhesive patch (not shown)	Not Sold Separately
19	Screw, 1/2-13 x 0.75 in.	868A



## FEATURES OF ADVANCED AUDIO RADIO

### Understanding Speaker/Volume Features

A three-position speaker switch is:

- Standard on FLHTCU, FLHTCUTG, and FLHTK models.
- Included in kits 77107-09 and 77108-09.

#### Basic points to remember:

- The speaker switch controls the location through which music and bike-to-bike communications are heard (speakers or headsets).
- Rider-to-passenger communications ("Intercom") are ALWAYS heard through the headsets, regardless of switch position.

In the **down** position (nearest rider), audio and bike-to-bike communication will be heard through the vehicles speakers. Intercom will come through the rider and passenger headsets.

In the **middle** position, audio will be heard through the vehicle speakers. Bike-to-bike communication and intercom will come through the rider and passenger headsets.

In the **up** position (furthest from the rider), audio, bike-to-bike communication and intercom will come through the rider and passenger headsets.

### Volume Settings

#### Basic points to remember:

- There are separate volume settings for speaker and front and rear headsets.
- There are separate volume settings for Music, Intercom, and bike-to-bike (CB).
- Getting these volume settings out of proper adjustment is likely the second-most confusing/frustrating aspect a customer could encounter.

Volume settings for audio, communication, and intercom are all independent and all adjusted by using the AUDIO +/- switch on the rider left hand control or passenger PTT/VOL+/VOL-switch.

**Audio (music) SPEAKER** volume can be adjusted by the RIDER ONLY while listening to music via speakers by pressing up or down on the AUDIO button on the left hand control.

- Note that a "Speaker" icon displays on screen.

**Audio (music) HEADSET** volume can be adjusted by rider OR passenger independently while listening to music by pressing up or down on the AUDIO button on the left hand control or passenger PTT switch.

- Note "F" for front/rider and "R" for rear/passenger settings display on screen in headset mode.

**Intercom** volume can be found by pressing the INT button on the radio face. It can only be adjusted in INT mode.

- Volume can be adjusted by rider OR passenger independently.
- Note "F" for front/rider and "R" for rear/passenger volume settings displayed on screen .
- Press the INT button again to return to normal music operation.

**Bike-to-bike communication** volume can be found by pressing the COM button on the radio face. It can only be adjusted in COM mode.

- Volume can be adjusted by rider OR passenger independently.
- Note "F" for front/rider and "R" for rear/passenger volume settings displayed on screen.
- Press the COM button again to return to normal music operation.
- The rider or passenger can press the PTT button to communicate with other motorcycles or vehicles equipped with a CB system.

### Understanding Intercom Voice Activation

#### NOTE

*This feature works with few problems when set up properly, but can be the **BIGGEST SOURCE OF CONFUSION AND FRUSTRATION** for an inexperienced user.*

VOX, Voice Operated eXchange, (a.k.a. "Voice Activation") is used to open and close the microphone when rider and passenger are using intercom to talk to each other while riding. When the microphone is "open", the music being played is muted slightly to become "background music" during conversation. Once the microphone closes, music volume returns to its previous setting.

This VOX sensitivity setting can be adjusted by pressing the intercom button on the radio face and utilizing the Mode +/- switch on the right hand control.

- Turning the sensitivity **down** will require the rider and passenger to speak louder to start a conversation.
- Turning the sensitivity **up** will open the microphone more easily, with lesser voice strength needed.
- As road conditions change, highway vs. city streets, or as the wind changes, adjustments to VOX will likely be required, since the background noise is added to the spoken voice level to "break" the VOX setting and open the microphone.

#### NOTE

*Music is muted (whether in speakers or headsets) whenever the VOX is opened for intercom use. Unexplained, intermittent music volume can often be due to VOX setting being set too sensitive for the current conditions, causing the microphone to open and "mute" the music intermittently.*