



INSTRUCTIONS

-J05554

REV. 2011-11-11

BOOM! AUDIO AM/FM/WB HIDDEN ANTENNA

GENERAL

Kit Number

76000266

Models

For model fitment information, see the P&A retail catalog or the Parts and Accessories section of www.harley-davidson.com (English only).

Installation Requirements

⚠ WARNING

The rider's safety depends upon the correct installation of this kit. Use the appropriate service manual procedures. If the procedure is not within your capabilities or you do not have the correct tools, have a Harley-Davidson dealer perform the installation. Improper installation of this kit could result in death or serious injury. (00333a)

NOTE

This instruction sheet refers to service manual information. A service manual for this year/model motorcycle is required for this installation and is available from a Harley-Davidson dealer.

Kit Contents

See Figure 4 and Table 1.

PREPARATION

NOTE

For vehicles equipped with security siren:

- **2007 and later:** Verify that the Hands-Free Fob is present. Turn the ignition key switch to IGNITION.
- **2006 and earlier:** Disarm the siren with the key fob.

⚠ WARNING

To prevent accidental vehicle start-up, which could cause death or serious injury, remove main fuse before proceeding. (00251b)

1. See the service manual and remove the main fuse.
2. Turn the ignition key switch OFF.

NOTE

For models with **fork-mounted fairing**, removing the headlamp from the fairing now may simplify fairing installation with the antenna in place.

3. See the service manual to remove the outer fairing and windshield.

INSTALLATION

Follow the installation and routing instructions carefully to obtain the best possible performance from the antenna.

NOTES

- Ambient temperature should be **at least 60 °F (16 °C)** for proper adhesion of the hidden antenna to the vehicle.
- Allow **AT LEAST 24 hours** after applying the antenna before exposing the area to vigorous washing, strong water spray or extreme weather.
- The adhesive bond will increase to maximum strength after about 72 hours at normal room temperature.

Models with Fork-Mounted Fairing and Standard Headlamp

1. See Figure 4. Get the antenna (1) and alcohol cleaning packet (7) from the kit.
2. See Figure 1. Position the curved mounting wedge of the antenna (1) against the front of the vehicle outer fairing skirt (2), about 1/4 in (6 mm) below the black plastic trim strip, with the power and ground leads **facing up**.

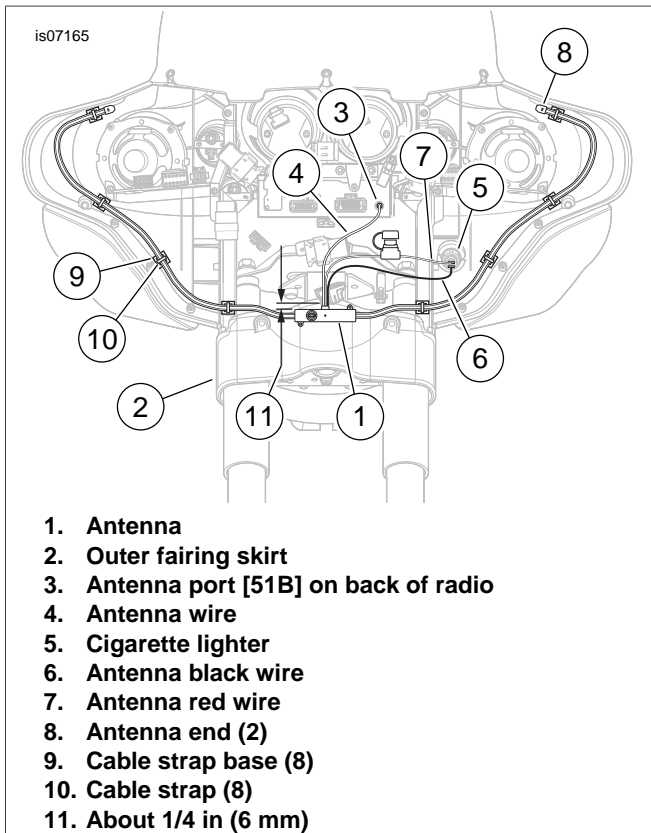


Figure 1. Antenna Element Routing (FLHT Models with Standard Headlamp)

3. Clean the mounting area of the skirt with the alcohol wipe. Allow to dry thoroughly.
4. Remove the liner from the adhesive backing of the foam tape on the wedge.
5. Carefully position the antenna to the fairing skirt, and press firmly into place. Hold the antenna in position with steady pressure for one minute.
Proceed to **ALL models**.

Models with Fork-Mounted Fairing and LED or Dual-Bulb Halogen Headlamp

1. See Figure 4. Get the antenna (1), foam tape (6) and alcohol cleaning packet (7) from the kit.
Remove the mounting wedge (3) from the antenna housing (2). Recycle or dispose of the wedge and screws (4) properly.
2. See Figure 2. Test-fit the antenna (1) against the inside of the inner fairing, under the cigarette lighter (5) with the power and ground leads **facing upward**.
3. Clean the mounting area of the inner fairing and antenna with the alcohol wipe. Allow to dry thoroughly.
4. Remove the liner from the adhesive backing on one side of the foam tape. Fasten the tape to the antenna.
5. Remove the liner from the adhesive backing on the second side of the foam tape. Carefully position the antenna to the inner fairing beneath the cigarette lighter. Press firmly into place. Hold the antenna in position with steady pressure for one minute.
Proceed to **ALL models**.

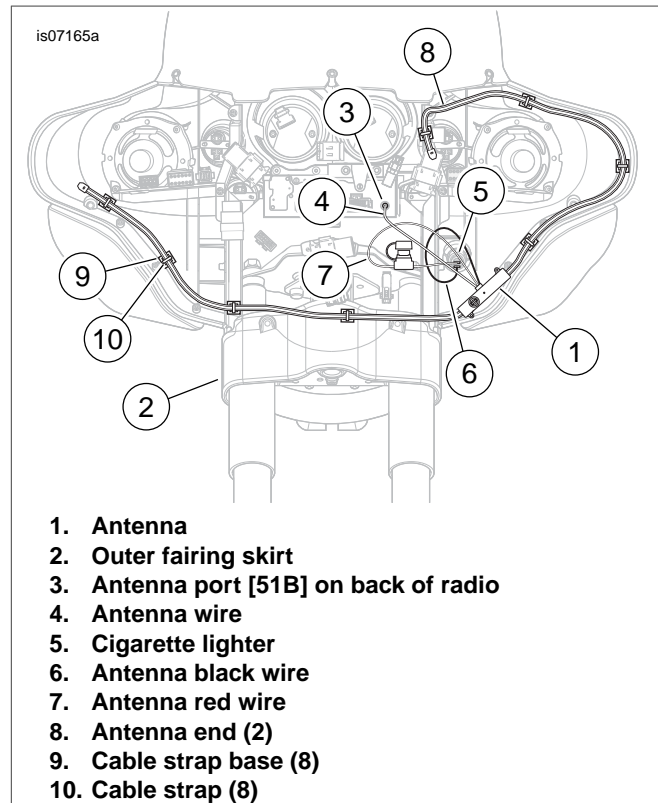
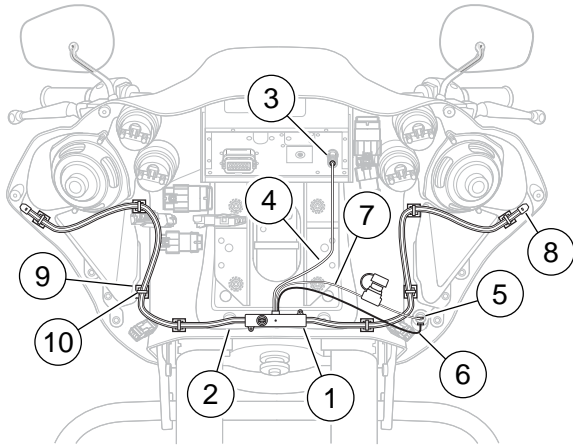


Figure 2. Antenna Element Routing (FLHT Models with LED or Dual Bulb Headlamp)

Models with Frame-Mounted Fairing

1. See Figure 4. Get the antenna (1), foam tape (6) and alcohol cleaning packet (7) from the kit.
Remove the mounting wedge (3) from the antenna housing (2). Recycle or dispose of the wedge and screws (4) properly.
2. See Figure 3. Test-fit the antenna (1) against the underside of the fairing mount bracket (2) with the power and ground leads **facing forward**.
3. Clean the mounting area of the fairing mount bracket and antenna with the alcohol wipe. Allow to dry thoroughly.
4. Remove the liner from the adhesive backing on one side of the foam tape. Fasten the tape to the antenna.
5. Remove the liner from the adhesive backing on the second side of the foam tape. Carefully position the antenna to the inner fairing, as high as it will go against the fairing mounting brackets. Press firmly into place. Hold the antenna in position with steady pressure for one minute.
Proceed to **ALL models**.



1. Antenna
2. Fairing mount bracket
3. Antenna port [51B] on back of radio
4. Antenna wire
5. Cigarette lighter
6. Antenna black wire
7. Antenna red wire
8. Antenna end (2)
9. Cable strap base (8)
10. Cable strap (8)

Figure 3. Antenna Element Routing (FLTR Models)

ALL Models

NOTE

Electrical connectors are identified in the service manual by the numbers and letters shown here **within brackets**.

6. See Figure 1, Figure 2 or Figure 3. Unplug the original equipment (OE) antenna connector [51A] from the antenna port [51B] (3) on the back of the radio. Secure the antenna cable out of the way inside the fairing.
7. Route the antenna wire (4) and connector on the **new** antenna to the radio, and plug the connector into the antenna port.

NOTES

- Make the connections to the cigarette lighter (5) one lead at a time to prevent crossing the connections, which could damage the antenna
 - Having more than one accessory connected to the terminal mounting tabs on the cigarette lighter terminals could lead to a short in the accessory circuit.
 - References to the orange/white wire in the following steps apply also to the orange/red cigarette lighter power wire found in some applications.
8. **If NO additional accessory is currently connected to the cigarette lighter terminal mounting tabs [132A]:**

Connect the antenna to the cigarette lighter terminals as follows:

- a. Unplug the black wire terminal [132B] from the cigarette lighter. Connect it to the tab on the antenna black wire (6) terminal.
- b. Connect the antenna black wire terminal to the cigarette lighter ground terminal.
- c. Unplug the orange/white wire terminal [132B] from the cigarette lighter. Connect it to the tab on the antenna red wire (7) terminal.
- d. Connect the antenna red wire terminal to the cigarette lighter power terminal.

If an accessory IS already connected to the cigarette lighter terminal mounting tabs [132A]: See Figure 4. Splice into the power (orange/white) and ground (black) wires to connect the antenna as follows:

- a. Cut the connectors from the black (A) and red (B) wires of the antenna and strip approximately 3/8 in (10 mm) of insulation from the end of each wire.
- b. Cut the black wire leading to the cigarette lighter approximately 1 in (25 mm) back from the connector. Strip approximately 3/8 in (10 mm) of insulation from the end of each black wire.
- c. Follow instructions in the service manual appendix to splice the black wire of the antenna to the two ends of the cut black (ground) wire using a sealed splice connector (8) from the kit.
- d. Cut the orange/white wire leading to the cigarette lighter in the same manner. Splice the red wire of the hidden antenna to the two ends of the cut orange/white wire using a sealed splice connector.

NOTE

On FLHT models with LED or dual bulb headlamp (Figure 2): Route the end of the clutch-lever side antenna element forward on the fairing vertical support bracket.

9. Route the antenna element (C) on one side of the inner fairing as shown in Figure 1, Figure 2 or Figure 3.
10. Secure the antenna element with cable strap bases (9) and cable straps (10) from the kit as follows:
 - a. Use the alcohol wipe along the antenna element path to clean the mounting areas for the cable strap bases and antenna ends approximately as shown. Allow to dry thoroughly.
 - b. Remove the liner from the adhesive backing of the antenna end (8). Position the end to the inner fairing, and press firmly into place.
 - c. Remove the liner from the adhesive backing of a cable strap base. Position the base to the inner fairing, and press firmly into place.
 - d. Use a cable strap to tie the antenna element to the base. **Do not overtighten.**
 - e. Repeat for the remaining cable strap bases and cable straps on that side of the inner fairing.
11. Route the antenna element on the opposite side of the inner fairing, and secure with cable strap bases and cable straps in the same manner.

12. Use cable straps from the kit to secure the excess hidden antenna wiring as necessary.
13. **For FLHX and FLTRX Models:** Remove the grommet from the antenna clearance hole in the fascia. Install the hole plug (12) from the kit.

For ALL Models: Remove the OE AM/FM antenna mast from the rear of the vehicle. Install the antenna thread protector (11) over the antenna base.

RETURN TO SERVICE

NOTE

*To prevent possible damage to the sound system, verify that the ignition key switch is in the OFF position **before** installing the main fuse.*

1. See the service manual and install the main fuse.

2. Check for antenna function. The red LED on the antenna body (2) should illuminate with the ignition key switch in the ACCY or IGN position. If it does not, check the inline fuse (5) on the red antenna power wire or the vehicle accessory fuse.

NOTE

Installation of the hidden antenna can result in a slight reduction of AM signal reception in certain urban and rural locations.

3. Test the radio function on the AM, FM and Weather bands to verify that the antenna is working properly.
4. See the service manual to install the outer fairing and windshield.

For models with **fork-mounted fairing**, install the headlamp if removed earlier.

SERVICE PARTS

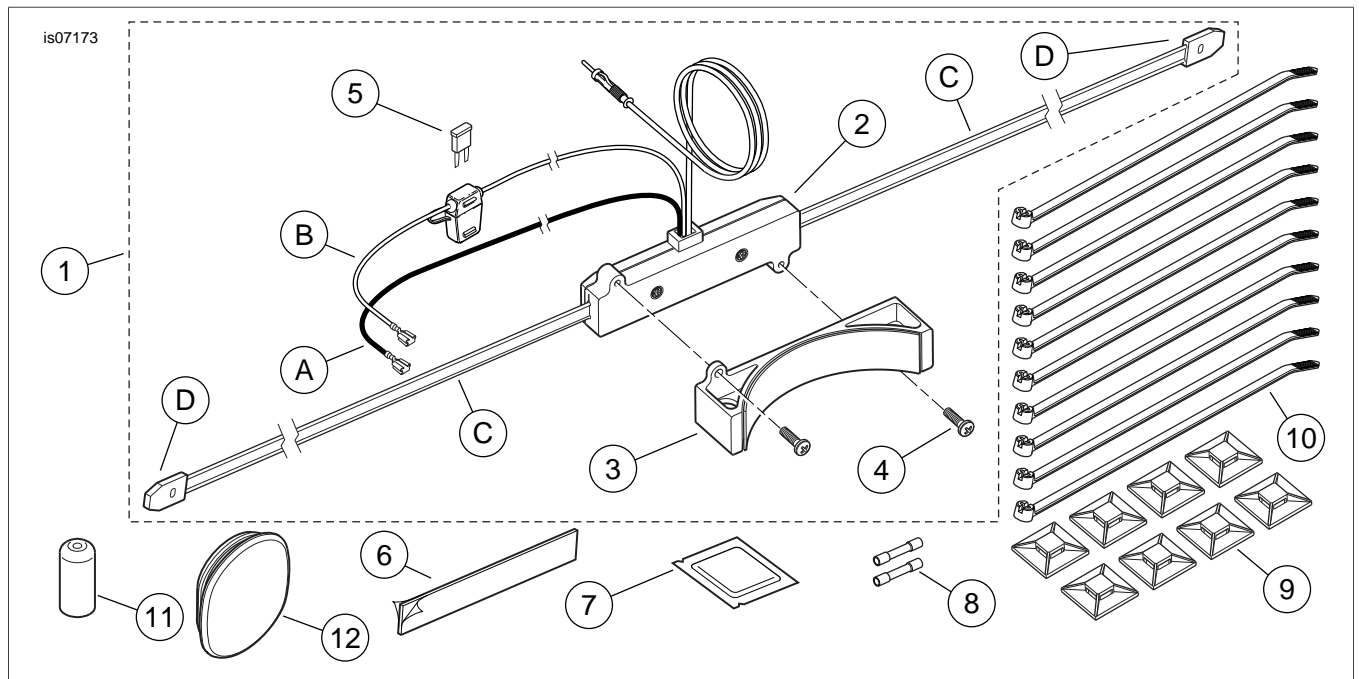


Figure 4. Service Parts, Boom! Audio Hidden AM/FM/WB Enhanced Reception Antenna

Table 1. Service Parts

Item	Description (Quantity)	Part Number
1	Antenna, AM/FM/WB (includes items 2-5)	Not sold separately
2	• Antenna	Not sold separately
3	• Wedge, mounting (for FLH models)	Not sold separately
4	• Screw, pan head, #6 (2)	Not sold separately
5	• Fuse, mini type, 2 Amp (gray)	54305-98
6	Foam tape, two-side adhesive	11100063
7	Alcohol cleaning packet	Not sold separately
8	Sealed splice connector, #14-16AWG (blue) (2)	70586-93
9	Wire retainer, adhesive back (8)	Not sold separately
10	Cable strap (10)	10065
11	Thread protector cap, antenna base	Not sold separately
12	Plug, fascia antenna hole	59749-06
Items mentioned in text, but not included in kit:		
A	Black antenna ground wire	
B	Red antenna power wire	
C	Antenna element (2)	
D	Antenna end (2)	