



# INSTRUCTIONS

-J05469

REV. 2011-09-20

## SADDLEBAG IPOD MODULE RELOCATION KIT

### GENERAL

#### Kit Number

76000238

#### Models

For model fitment information, see the P&A retail catalog or the Parts and Accessories section of [www.harley-davidson.com](http://www.harley-davidson.com) (English only).

#### Installation Requirements

#### WARNING

The rider's safety depends upon the correct installation of this kit. Use the appropriate service manual procedures. If the procedure is not within your capabilities or you do not have the correct tools, have a Harley-Davidson dealer perform the installation. Improper installation of this kit could result in death or serious injury. (00333a)

#### NOTE

This instruction sheet refers to service manual information. A service manual for this year/model motorcycle is required for this installation and is available from a Harley-Davidson dealer.

#### Kit Contents

See Figure 2 and Table 1.

### PREPARATION

#### NOTE

For 2007 and later vehicles equipped with security siren:

- Verify that the Hands-Free Fob is present.
- Turn the ignition key switch to IGNITION.

#### WARNING

To prevent spray of fuel, purge system of high-pressure fuel before supply line is disconnected. Gasoline is extremely flammable and highly explosive, which could result in death or serious injury. (00275a)

1. See the service manual to purge the fuel supply of high pressure gasoline and remove the fuel supply line.

#### WARNING

To prevent accidental vehicle start-up, which could cause death or serious injury, remove main fuse before proceeding. (00251b)

2. See the service manual and remove the main fuse.  
Remove the seat. Retain the seat and all mounting hardware.

#### WARNING

When servicing the fuel system, do not smoke or allow open flame or sparks in the vicinity. Gasoline is extremely flammable and highly explosive, which could result in death or serious injury. (00330a)

3. See the service manual and remove the instrument console (if equipped) from the fuel tank.
4. See the EFI Engine section of the service manual for fuel tank removal instructions.

### REMOVAL

1. See the service manual to remove the outer fairing and windshield.
2. Disconnect the iPod cable from the round connector on the iPod module.
3. Unplug the eight-way connector [274B] of the iPod/NIM harness from the iPod interface module connector [274A].
4. Disconnect the six-way pin housing [6A] of the iPod/NIM harness from socket housing [6B] on the vehicle fairing/interconnect harness.
5. Remove the iPod module attaching screw at the back of the radio, and set it aside for later installation.  
Remove the iPod module from on top of the radio.

### VEHICLE WIRING

1. See Figure 2. Get the iPod relocation harness (4) from the kit.
2. Position the twelve-way connector (A) to the left rear frame fender support arm, near the rear of the saddlebag.
3. Fold the harness branch (B) and six-way connector back, and use a cable strap (10) from the kit to tie it to the main body of the iPod relocation harness under the seat.

4. Route the main body of the iPod relocation harness forward on the vehicle:
  - a. Along the left rear frame fender support arm. Use a cable strap (not provided) to fasten the harness branch to the fender support.
  - b. Continue the harness forward to the front of the fender, then down the left side of the rear frame. Use a cable strap (not provided) to fasten the harness to the frame.
  - c. Continue routing the harness forward, tucking the harness inboard of the frame tube and avoiding the forward saddlebag guard mounting screw head so the harness does not get pinched by the seat. Use cable straps (not provided) to fasten the harness to the frame tube.
  - d. Route the harness along the left side of the battery cavity, continuing forward to the harness tray.
  - e. Open the cover of the harness tray. Route the harness through the openings in the tray, using cable straps (not provided) to fasten to the main harness.
  - f. Continue the harness forward into the fairing.

## ⚠ WARNING

Be sure that steering is smooth and free without interference. Interference with steering could result in loss of vehicle control and death or serious injury. (00371a)

- Be sure wires do not pull tight when handlebars are turned fully to left or right fork stops.
5. Route the three branches of the front section of the iPod relocation harness inside the fairing along the path of the fairing/interconnect harness to the top left of the inner fairing.
  6. See Figure 2. Plug the eight-way pin housing (C) from the harness (4) into iPod/NIM harness connector [274B].

### NOTE

**On the non-Ultra overlay harness:** The connectors are marked "RIGHT REAR SPEAKER" and "LEFT REAR SPEAKER".

**On the original equipment (OE) radio harness:** The connectors are NOT marked.

7. Connect the six-way socket housings (D, with green and green/brown wires) and (E, with brown and white/brown wires) to the non-Ultra overlay or radio harness connectors having the same color wires.

Secure with cable straps (not provided).

## LEFT SADDLEBAG DRILLING

1. Lay a clean pad or blanket on the work surface to protect the painted surfaces of the saddlebag.
2. Remove the left saddlebag from the vehicle per service manual instructions. Lay it, outboard side down, on the protected work surface.

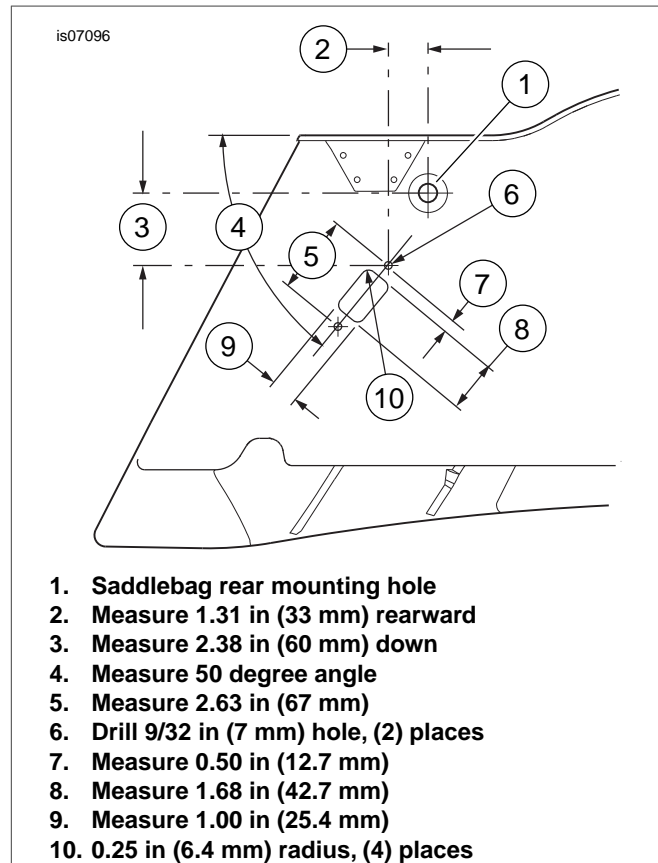


Figure 1. Cut Connector Holes in Inboard Saddlebag Wall (Left Bag Shown)

3. See Figure 1. Lay a strip or strips of masking tape in the approximate area of the holes to be made in the inboard saddlebag wall for the saddlebag jumper harness connector. Very carefully measure and mark the hole locations as shown.
4. Mark the centers of the two holes with a center punch. Drill two 9/32 in (7 mm) diameter holes in the saddlebag wall.
5. Carefully cut the rectangular hole for the connector body.
6. Remove the tape. Lightly sand the hole to remove burrs and sharp edges. Clean the saddlebag wall surface of tape residue with a 50-50 mixture of isopropyl alcohol and distilled water. Allow to dry thoroughly.
7. Figure 2. Get the mounting bracket (1), cover (2) and three push-in clips (3) from the kit.
8. Remove the liners from the adhesive backing of the mounting bracket. Carefully position the bracket to the rear inboard corner of the saddlebag in the orientation shown, and press firmly into place. Hold the bracket in position with steady pressure for a few minutes.
9. Position the iPod module (F) onto the bracket, with the metal cones on one end fitting firmly into the rubber grommets in the bracket.
10. Fasten the module to the bracket with the screw (G) removed from the radio case earlier. Tighten to 35-45 in-lbs (4.0-5.1 Nm).
11. Get the saddlebag wire harness (5), plug cover (7) and two screws (8) from the kit.

12. Feed the harness connectors [274B] and [41S], from the outside, through the rectangular opening cut in the saddlebag inboard wall so the 12-way panel mount connector [289] fits into the opening.
13. Install the plug cover over the panel mount connector and harness from the **inside** of the saddlebag. Insert two screws through the connector flange and saddlebag wall, and into the threaded holes in the plug cover. Tighten to 35-40 **in-lbs** (3.95-4.52 N-m)
14. Route the harness downward to the bottom of the saddlebag, and rearward along the inboard wall.
15. Plug the eight-way connector [274B] on the saddlebag wire harness into the iPod module connector [274A].  
Get the iPod cable unplugged from the iPod module earlier. Connect the iPod cable into the round connector on the iPod module.
16. Place the foam cover over the iPod module, and install the cover to the bracket with the three push-in clips.
17. **If saddlebag lid speakers ARE NOT installed or being installed**, use a cable strap (10) from the kit to coil the long leg of the harness, and place it at the bottom of the saddlebag.

**If saddlebag lid speakers ARE installed or being installed**, the long leg of the saddlebag wire harness can be used to power the left speaker in place of the harness in the speaker kit.

If using the saddlebag wire harness:

- a. Route the long leg of the harness, with two connectors [41S], across the rear of the saddlebag,
  - b. forward along the outboard wall, and
  - c. upward in front of the saddlebag lid tether.
- d. Get five adhesive back clips (9) from the kit. Remove the liner from the adhesive backing of each clip and affix to the inside walls of the saddlebag, about one inch (25 mm) above the bottom of the saddlebag. Fasten the harness to the clips.

#### NOTE

*If the saddlebag speakers had been installed earlier, the harness from the speaker kit can be removed, and the hole in the saddlebag side wall closed with a 5/8 in (16 mm) hole plug, purchased separately.*

18. Remove the saddlebag lid tether from the saddlebag and lid, and install the **new** tether (6) from the kit, oriented as shown, with the same fasteners.  
Alternately tighten the two smaller screws at the saddlebag latch to 20-25 **in-lbs** (2.3-2.8 Nm). Alternately tighten the two larger screws at the saddlebag lid to 18-20 **in-lbs** (2.0-2.3 Nm).
19. Install the saddlebag to the vehicle per service manual instructions.
20. Plug the iPod relocation harness connector [289B] into the saddlebag harness connector.
21. Fasten the saddlebag leg of the iPod relocation harness to the upper rear of the saddlebag support so there is just enough harness loose to comfortably reach the saddlebag.

## RETURN TO SERVICE

1. See the service manual and install the fuel tank.

#### NOTE

*To prevent possible damage to the sound system, verify that the ignition key switch is in the OFF position **before** installing the main fuse.*

2. See the service manual and install the main fuse.
3. Test the sound system iPod controls for proper operation.
4. Install the outer fairing and windshield. Refer to the service manual.



# SERVICE PARTS

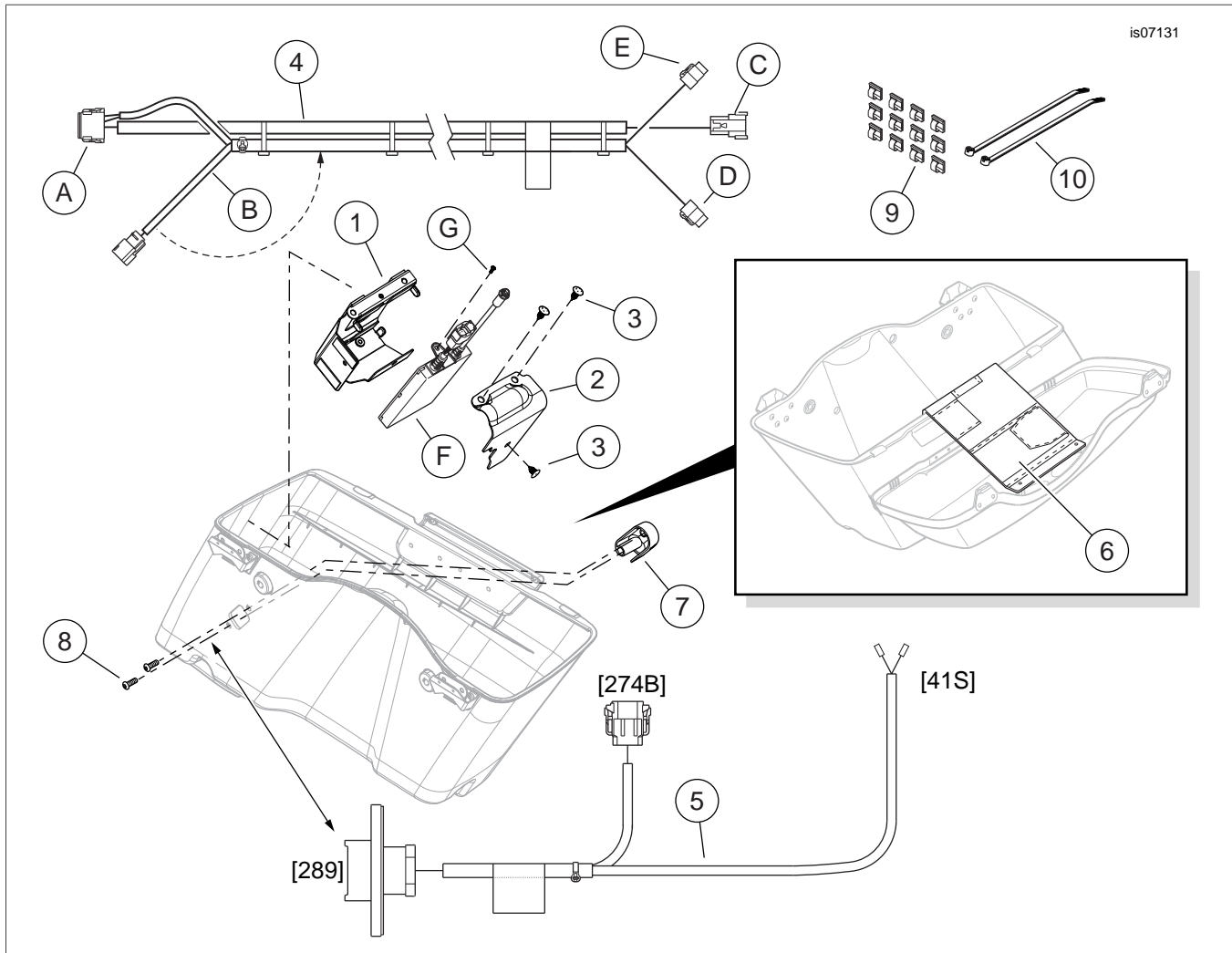


Figure 2. Service Parts, Saddlebag iPod Module Relocation Kit



## SERVICE PARTS

Table 1. Service Parts

Item	Description (Quantity)	Part Number
1	Bracket, iPod rear mounting	76000139
2	Cover, iPod module	76000140
3	Clip, push-in (3)	12600068
4	Wire harness assembly, iPod relocation	Not sold separately
5	Wire harness, saddlebag (left)	Not sold separately
6	Tether, iPod, saddlebag lid	90200002
7	Plug cover	69200329
8	Screw, TORX button head, 1/4-20 x 0.75 in (19 mm) long (2)	940
9	Clip, adhesive back (12)	Not sold separately
10	Cable strap (2)	10065
<b>Items mentioned in text, but not included in kit:</b>		
A	Twelve-way connector	
B	Harness branch with six-way connector	
C	Eight-way pin housing	
D	Six-way socket housing with green and green/brown wires	
E	Six-way socket housing with brown and white/brown wires	
F	iPod module	
G	Screw removed from radio case	

