

INSTALLATION INSTRUCTIONS

FLIP BLADES HIGHWAY PEGS

7540

THANK YOU FOR CHOOSING KURYAKYN!

Protect yourself and others from possible injury and property damage or loss. Pay close attention to all instructions, warnings, cautions, and notices regarding the installation, use, and care of this product.

WARNING THIS INDICATION ALERTS YOU TO THE FACT THAT IGNORING THE CONTENTS DESCRIBED HEREIN CAN RESULT IN POTENTIAL DEATH OR SERIOUS INJURY.

CAUTION THIS INDICATION ALERTS YOU TO THE FACT THAT IGNORING THE CONTENTS DESCRIBED HEREIN CAN RESULT IN MINOR OR MODERATE POTENTIAL INJURY.

NOTICE THIS INDICATION ALERTS YOU TO THE FACT THAT IGNORING THE CONTENTS DESCRIBED HEREIN MAY NEGATIVELY AFFECT PRODUCT PERFORMANCE AND FUNCTIONALITY OR DAMAGE THE PRODUCT ITSELF OR THE PRODUCT TO WHICH IT IS BEING ATTACHED.

ENSURE THAT THE FOLLOWING PARTS HAVE BEEN INCLUDED IN THE KIT:

- | | | | |
|---|---|---|---------------------------------------|
| 1 | Right Hand Flip Blade Highway Peg | 1 | Hardware Kit, containing: |
| 1 | Left Hand Flip Blade Highway Peg | 4 | 1/4"-20 x 1/2" Socket Head Cap Screws |
| 1 | Right Hand Stiffener Plate—Traditional Boards | 8 | 1/4"-20 x 5/8" Button Head Cap Screws |
| 1 | Left Hand Stiffener Plate—Traditional Boards | 8 | 1/4" Flat Washers |
| | | 8 | 1/4"-20 Nylock Nuts |
| | | 2 | #10-32 x 3/8" Set Screws |

YOU WILL ALSO NEED:

Set of Hex Wrenches, Combination Wrenches or Socket Set and Ratchet, Screwdrivers, Drill Bits, Drill, Center Punch, Pliers, Side Cutters/Knife, Blue Loctite

NOTICE THESE INSTALLATION INSTRUCTIONS CONTAIN IMPORTANT INFORMATION. ENSURE THE END USER RECEIVES THIS COPY AND IS AWARE OF ITS IMPORTANCE FOR FUTURE USE.

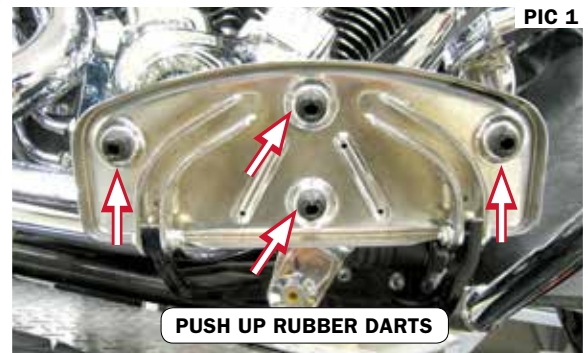
STEP 1 Read and understand all steps in the instructions before starting the installation. Park the motorcycle on a hard, level surface and turn off the ignition. Let motorcycle cool.

WARNING YOU WILL BE WORKING AROUND THE ENGINE AND EXHAUST SYSTEM DURING INSTALLATION. ENSURE THAT THE ENGINE AND EXHAUST SYSTEM HAVE FULLY COOLED TO PREVENT INJURY.

WARNING THIS ASSEMBLY IS ONLY AS STRONG AS THE OEM COMPONENTS IT IS ATTACHED TO. ADDING THIS FOOTREST POSITION CAN INCREASE LEVERAGE ON THE OEM EQUIPMENT. THIS ACCESSORY IS INTENDED AS A FOOT REST ONLY. DO NOT STAND ON, OR APPLY EXCESSIVE FORCE TO THESE PEGS.

STEP 2 Starting with the right side, remove the footboard pad from the base by gently pulling up on the rubber pad while simultaneously pushing on the rubber darts (PIC 1) protruding from the underside of the footboard assembly.

Note: It will be easier to fully remove the floorboard before attempting to drill any of the holes.



INSTALLATION INSTRUCTIONS

FLIP BLADES HIGHWAY PEGS

7540

-CONTINUED-

STEP 3 Lay the stiffener plates on the footboard base as shown PIC 2. Make sure that you place the stiffener plate with the two tapped holes to the front of the board. Use this plate as a template to mark the position of the six mounting holes. PIC 2 Use a center punch or felt tip pen to mark the hole positions.

NOTICE

MEASURE TWICE - DRILL ONCE. DOUBLE CHECK ALL REFERENCE MARKS MADE ON THE FLOORBOARD BASE BEFORE DRILLING. KURYAKYN WILL NOT BE RESPONSIBLE FOR INCIDENTAL OR CONSEQUENTIAL DAMAGES RESULTING FROM THIS INSTALLATION.

STEP 4 Once the holes are clearly marked, remove the plate and use at least a 1/4" drill bit (or slightly oversized drill bit for tolerance) to drill all six of the holes.

STEP 5 Loosely install the stiffener plate using the four rear mounting holes making sure that the two-tapped holes are to the front of the board and with the flat side down. Insert the 1/4"-20 x 5/8" button socket cap screws through the stiffener plate and base. Secure with the 1/4" flat washers, and nylon locking nuts from the bottom. PIC 2

STEP 6 Turn the board over and loosely install two of the 1/4"-20 X 1/2" socket head cap screws in the two tapped holes in the front of the board to help keep these lined up. Tighten the rear four mounting bolts securely.

STEP 7 On the front rubber isolators dart (bottom of the floorboard pad), you will have to cut the top two little rubber nipples off to have adequate clearance for the flip blade. PIC 4

STEP 8 Wet the Isolators with soapy solution and reinstall the rubber pad to the steel footboard body. You may have to carefully pull the rubbers through the holes in the board with pliers.

STEP 9 Remove the two socket head cap screws from Step 6. Place the right flip blade on the footboard so the mounting holes line up with the forward two mounting holes. PIC 3 Place a drop of Blue Loctite on the two 1/4"-20 x 1/2" socket head cap screws and install them through the mount, through the floorboard base and into the front two holes on the stiffener plate.

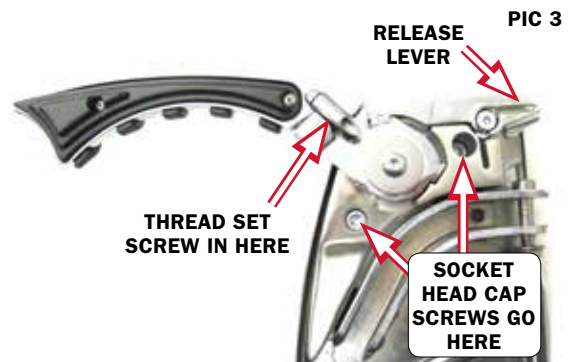
STEP 10 Tighten all fasteners securely.

STEP 11 Install one of the included #10-32 X 3/8" set screws into the location shown in PIC 3. This set screw will allow you to fine tune the footpeg angle. Raise the end of the footpeg by tightening the set screw. Loosening it will lower the end of the peg. Always check to make sure the footpeg will fully retract under the floorboard after adjustment.

STEP 12 Reinstall the board back to the bike after all the Flip Peg fasteners have been tightened. Tighten the board mounting fasteners securely.

STEP 13 Repeat all steps for opposite side.

STEP 14 To open the flip blade simply reach down and physically flip it out with your hand. To close you will have to press the release lock (PIC 3) to unlock the arm and fold it in.



INSTALLATION INSTRUCTIONS

FLIP BLADES HIGHWAY PEGS

7540

-CONTINUED-

⚠ WARNING MAKE SURE THE NEW FOOT POSITION WITH THE FLIP BLADES OPEN DOES NOT INTERFERE WITH THE OPERATION OF THE FOOT CONTROLS. INTERFERENCE WITH THE FOOT CONTROLS MAY CAUSE LOSS OF CONTROL RESULTING IN SERIOUS INJURY OR DEATH.

⚠ WARNING DO NOT ATTEMPT TO OPEN OR CLOSE THE FLIP BLADES WHILE THE MOTORCYCLE IS IN MOTION.

⚠ WARNING CHECK TO MAKE SURE THAT THERE IS PROPER GROUND CLEARANCE FOR CORNERING. LOSS OF CONTROL OF THE MOTORCYCLE AND SERIOUS INJURY MAY OCCUR IF THERE IS INADEQUATE CORNERING CLEARANCE.

⚠ CAUTION ENSURE THAT THE INSTALLATION OF THIS PRODUCT DOES NOT INTERFERE WITH THE PROPER OPERATION OF THE MOTORCYCLE BEFORE RIDING.

NOTICE IT IS THE INSTALLER'S RESPONSIBILITY TO ENSURE THAT ALL OF THE FASTENERS (INCLUDING PRE-ASSEMBLED) ARE TIGHTENED BEFORE OPERATION OF THE MOTORCYCLE. KURYAKYN WILL NOT PROVIDE WARRANTY COVERAGE ON PRODUCTS OR COMPONENTS LOST DUE TO IMPROPER INSTALLATION OR LACK OF MAINTENANCE. PERIODIC INSPECTION AND MAINTENANCE ARE REQUIRED ON ALL FASTENERS.

LIMITED WARRANTY

Kuryakyn warrants that any Kuryakyn products sold hereunder, shall be free of defects in materials & workmanship for a period of one (1) year from the date of purchase by the consumer excepting the following provisions:

1. Kuryakyn shall have no obligation in the event the customer is unable to provide a receipt showing the date the customer purchased the product(s).
2. The product must be properly installed, maintained & operated under normal conditions.
3. Kuryakyn shall not be liable for any consequential & incidental damages, including labor & paint, resulting from failure of a Kuryakyn product, failure to deliver, delay in delivery, delivery in nonconforming condition, or for any breach of contract or duty between Kuryakyn & a customer.
4. Kuryakyn products are often intended for use in specific applications. Kuryakyn makes no warranty if a Kuryakyn product is used in applications other than intended.
5. Kuryakyn electrical products are warranted for one (1) year from the date of purchase by the consumer. L.E.D.'s contained in components of Kuryakyn products will be warranted for defects in materials & workmanship for 3 years from the date of purchase whereas all other components shall be warranted for one (1) year.
6. All warranty claims must be directed to the place of purchase. Merchandise sold through internet auction sites or any other unauthorized reseller shall not carry a Kuryakyn warranty. If unsure, please contact the place of purchase to verify they are an authorized Kuryakyn reseller.

RETURN POLICY

Merchandise determined to be defective may be returned up to one year from the date of purchase. Returns must be processed through original seller. Returned merchandise for any other reason other than warranty claims must be in like new condition & subject to a 20% restocking fee. All returns are subject to inspection for determination of full or partial credit. Any returned part that shows evidence of being used or installed contrary to manufacturer's instructions, &/or subjected to improper handling, packaging or return shipping by the customer, will not be eligible for exchange, refund or warranty consideration. All returned electrical items will be inspected & tested. If electrical item is deemed functional, no credit will be issued & item will be returned. All sales are final on discontinued or closeout merchandise.

©2015 KURYAKYN HOLDINGS, LLC ALL RIGHTS RESERVED

KURYAKYN, KURYAKYN K logo and the marks appearing on this instruction sheet are registered and common law trademarks of Kuryakyn Holdings except noted third-party trademarks. A full listing of trademarks and trademark registrations owned by Kuryakyn Holdings can be found at www.kuryakyn.com/legal-notice.

Emissions Notice: The California Air Resources Board (CARB) does not permit the use of aftermarket emission-related parts(s) that alter the performance of OEM emission-related devices unless CARB has issued an Executive Order, other than on racing vehicles on closed courses. Check your local laws and manufacturer's information.

Listed Manufacturers and product model names are for reference only. All product and company names are trademarks or registered trademarks of their respective holders. Use of them does not imply any affiliation with or endorsement by them. All specifications are subject to change without notice.

For additional information on third-party product and company names, please consult our Web page at www.kuryakyn.com/legal-notice

KURYAKYN.COM

866 277 9598 | INFO@KURYAKYN.COM

454 COUNTY ROAD VV SOMERSET, WI 54025