



INSTALLATION

LUGGAGE RACK RELOCATION KIT

7138

PARTS INCLUDED

- 4 Chrome Offset Shoe with Stud
- 2 Low Profile Offset Shoe with Stud
- 4 Offset Molded Rubber Gasket
- 4 Sealing Washer-Stainless/Rubber
- 4 Chrome High Crown 1/4-20 Acorn Nut
- 4 1/4-20 X 3/4" Flat Socket Cap Screw
- 1 Installation Instructions

Please read and understand entire instructions before starting installation.

THANK YOU FOR CHOOSING KÜRYAKYN!

IN ORDER TO PROTECT YOU AND OTHERS FROM POSSIBLE INJURY AND/OR PROPERTY DAMAGE OR LOSS, PLEASE PAY CLOSE ATTENTION TO ALL INSTRUCTIONS, WARNINGS, CAUTIONS AND ATTENTION NOTES REGARDING THE USE AND CARE OF THIS PRODUCT.

CAUTION! This indication alerts you to the fact that ignoring the contents described herein can result in potential injury or material damage.

ATTENTION! This indication alerts you to the fact that ignoring the contents described herein may negatively affect product performance and functionality.

TOOLS SUGGESTED

Set of Hex Wrenches, Set of Combination Wrenches, Masking Tape, Drill, 5/16 Drill Bit

STRICTLY OBSERVE THE FOLLOWING GUIDELINES IN ORDER TO USE THE PRODUCT PROPERLY AND AVOID POTENTIALLY DANGEROUS ACCIDENTS.

STEP 1 Read and understand all steps in the instructions before starting the installation. Park the motorcycle on a hard, level surface and turn off the ignition.

STEP 2 Remove the four acorn nuts or bolts, that hold the luggage rack to the lid, being careful not to let rack drop or scratch lid. Remove rack. Remove the studs from the bottom of the legs of the rack, set the hardware aside, it will not be reused. PIC 1

ATTENTION! Assistance is recommended in securing the luggage rack after all of the bolts have been removed to prevent damage to the Tour Pak lid.

STEP 3 If the existing holes in the Tour Pak lid are not at least 5/16", place a piece of masking tape over the existing holes in the Tour Pak. Using a center punch or Phillips screwdriver, carefully poke through the masking tape to open the existing holes under the tape. Using the 5/16" drill bit and drill, carefully enlarge the existing holes in the tour Pak lid. **Hint:** Drilling slowly from the outside of the lid will give a cleaner outside appearance. Remove the masking tape.

CUSTOMER SERVICE

877.370.3604 (toll free)

INSTALLATION QUESTIONS

techsupport@kuryakyn.com
or call 715.247.2983

LIMITED WARRANTY

Küryakyn warrants that any Küryakyn products sold hereunder, shall be free of defects in materials and workmanship for a period of one (1) year from the date of purchase by the consumer excepting the following provisions:

- Küryakyn shall have no obligation in the event the customer is unable to provide a receipt showing the date the customer purchased the product(s).
 - The product must be properly installed, maintained and operated under normal conditions.
 - Küryakyn makes no warranty, expressed or implied, with respect to any gold plated products.
 - Küryakyn shall not be liable for any consequential and incidental damages, including labor and paint, resulting from failure of a Küryakyn product, failure to deliver, delay in delivery, delivery in nonconforming condition, or for any breach of contract or duty between Küryakyn and a customer.
- Küryakyn products are often intended for use in specific applications. Küryakyn makes no warranty if a Küryakyn product is used in applications other than intended.
- Küryakyn electrical products are warranted for one (1) year from the date of purchase by the consumer. L.E.D.'S contained in components of Küryakyn products will be warranted for defects in materials and workmanship for 3 years from the date of purchase where as all other components shall be warranted for one(1) year. This includes, but is not limited to; control modules, wiring, chrome & other components.
- Küryakyn makes no warranty of any kind in regard to other manufacturer's products distributed by Küryakyn. Küryakyn will pass on all warranties made by the manufacturer and where possible, will expedite the claim on behalf of the customer, but ultimately, responsibility for disposition of the warranty claim lies with the manufacturer.

ABOUT OUR CATALOG

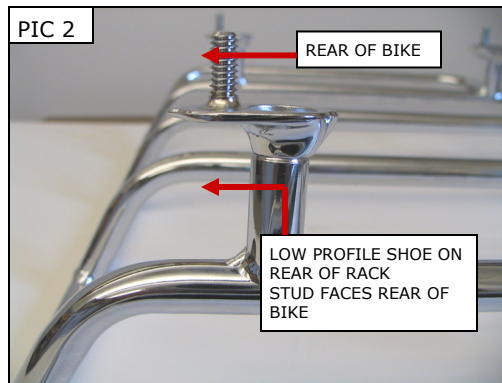
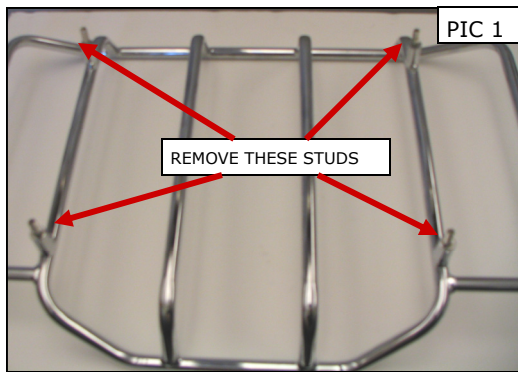
For purchasing Küryakyn® products, you can receive a complete catalog free of charge. Send the Proof-of-Purchase below with your address to: Küryakyn, P.O. Box 339, Somerset, WI 54025. Please indicate either Accessories Catalog for Harley-Davidson® or GL & Metric Cruisers.

Be sure to ask your local dealer about other Küryakyn® products, the motorcycle parts and accessories designed for riders by riders.

©2005 Küryakyn USA® All Rights reserved.



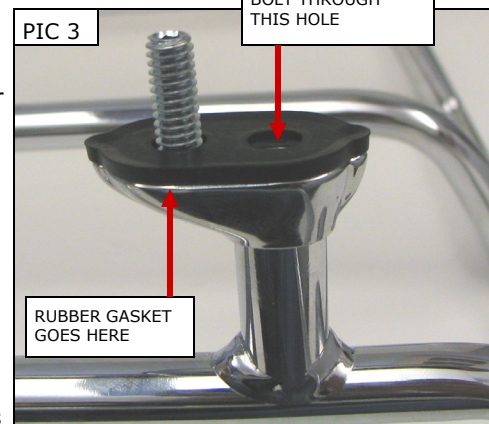
kuryakyn.com



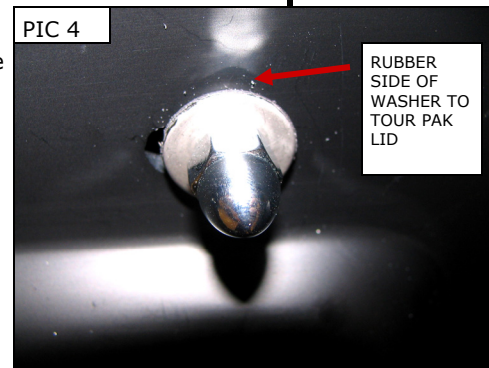
TIGHTEN FLAT HEAD BOLT THROUGH THIS HOLE

NOTE: The included Low Profile Offset Shoes are intended to be used in the rear position when using Kuryakyn's L.E.D. Run-Turn-Brake Spoiler, P/N 7767, for added clearance.

STEP 4 Using one of the provided Flat Socket Cap Screws, attach one of the Offset Shoes to the bottom of each leg. Leave these just snug, so they may be moved a little. The end of the Shoe with the stud will face the rear of the bike. This will raise the rack 1/2" and move it forward 1/2". PIC 2



STEP 5 Install one of the rubber offset gaskets to each shoe PIC 3. Test fit the rack to the lid by inserting the studs in the shoes through the corresponding holes in the lid. Adjust the Shoes so they are in line. Remove rack, being careful not to move the Shoes. Insert a Hex Wrench through the hole in the gasket (PIC 3) and, while holding the Offset Shoe in the desired position, tighten the Flat Socket Cap Screws to the legs.



STEP 6 With the Shoes tight, making sure the rubber gasket stays in place, install the rack to the lid with the studs on the Shoes going through the corresponding holes in the lid. Place a sealing washer on each stud (the rubber side of the washer goes to the inside of the lid first). Place a Chrome Acorn on each stud and tighten securely. PIC 4

ATTENTION! Determine the mounting location and orientation of the Offset Shoes before fully tightening the Acorn nuts. The Offset Shoes may leave marks when tightened down.

CAUTION! Never exceed the manufacturer's recommended load capacity. Excess loading on the luggage rack could cause damage to your motorcycle, loss or injury. Kuryakyn is not responsible for any damage, loss, or injury caused by exceeding the manufacturer's load capacity.

ATTENTION! It is the installer's responsibility to ensure that all of the fasteners (including pre-assembled) are tightened before operation of the motorcycle. Kuryakyn will not issue a warranty on components lost due to improper installation. Periodic maintenance may be required.