



# INSTRUCTIONS

-J05973

2016-08-22

## CONSOLE, FUEL DOOR, FUEL DOOR RELEASE KITS

### GENERAL

#### Kit Number

70900463, 70900465, 70900501, 90300096

#### Models

For model fitment information, see the P&A retail catalog or the Parts and Accessories section of [www.harley-davidson.com](http://www.harley-davidson.com) (English only).

#### Installation Requirements

Loctite® 243 Medium Strength Threadlocker and Sealant - Blue (Part No. 99642-97) to install fuel door hinge.

#### ▲ WARNING

The rider's safety depends upon the correct installation of this kit. If the procedure is not within your capabilities or you do not have the correct tools, have a Harley-Davidson dealer perform the installation. Improper installation of this kit could result in death or serious injury. (00308a)

#### Kit Contents

See Figure 2 and Table 1.

#### REMOVAL

1. See the service manual to remove the seat. Retain the seat and all mounting hardware.
2. See Figure 2. Open the fuel door (12). Remove and retain fuel filler cap (A).
3. Remove and discard screw (3). Remove and retain screw (G).
4. Carefully remove currently installed console (1) or (2).
5. Note location and orientation of fuel pump connector (C). Unplug connector from block if necessary.
6. Remove drain tube (D) from drain nipple (B).
7. Note tube and harness that are under clips (9).
8. **Models with front headset connector:** See Figure 1. Open headset cover (1). Place pin punch (2) in either notch (3) of lock ring (4). Rotate counterclockwise to loosen.
9. Remove lock ring (4) and cap (see Figure 2, Item F).

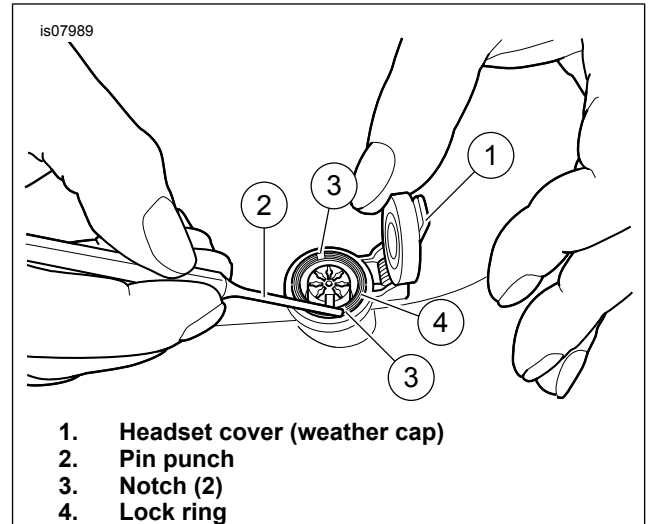


Figure 1. Remove/Install Headset Connector Lock Ring

10. **All models:** See Figure 2. Remove screws (8) and bracket (H). Retain bracket. Discard screws.
11. **If reusing fuel door and latch/lock:** Remove and retain screws (10), clip (11) and fuel door (12).

#### CONSOLE INSTALLATION

1. See Figure 2. Clean the area on the console (1 or 2) where console insert (6 or K) is applied.
2. Remove the paper adhesive liner. Align console insert. Set the console insert in place.
3. Apply firm pressure to the console insert at all contact points to verify a good bond.
4. **Models with front headset connector:** Insert the headset connector (E) through the insert (6).
5. Slide weather cap over headset connector (F).
6. See Figure 1. With the notches (3) on the outboard side, thread lock ring (4) onto the headset connector.
7. Place pin punch (2) over either notch. Rotate clockwise until tight.
8. **All models:** See Figure 2. Install bracket (H). Secure with **new** screws (8).
9. Install rubber molding (15) to console (1 or 2). The longer edge of each rubber molding goes on the **inboard** side.
10. Install boot (5) so the smooth side is facing **up**.

-J05973



Many Harley-Davidson® Parts & Accessories are made of plastics and metals which can be recycled. Please dispose of materials responsibly.

1 / 4

11. Install bumpers (4) into console as shown.
12. Route the drain tube (D) and wires (C or E) under console. Install clips (9) to secure.

### ⚠ WARNING

**Do not kink or pinch the fuel overflow line when installing console. A blocked line can cause an overfilled tank to leak. Gasoline is extremely flammable and highly explosive, which could result in death or serious injury. (00264a)**

#### NOTE

*When performing this installation, do not scratch nearby painted or chrome surfaces.*

13. Install drain tube (D) onto drain nipple (B).
14. Center trim cover (I). Install console using care to keep boot in place around fill tube. Secure console with screw (G), removed earlier and **new** screw (3). Tighten screw (G) to 4.1–6.8 N·m (36–60 **in-lbs**) Tighten screw (3) to 2.3–3.4 N·m (20–30 **in-lbs**).

## FUEL DOOR INSTALLATION

#### NOTE

*Prior to installation of new fuel door, install **new** self-tapping screws (10) to form threads. Remove screws.*

1. Apply LOCTITE 243 (blue) to the threads of screws (10).
2. Place hinge (11) over pin (J).
3. Secure fuel door (12) to hinge with screws (10). Tighten the screws to 2.8–3.4 N·m (25–30 **in-lbs**).

## LOCK REPLACEMENT

1. Remove nut (13) and lock (14).
2. Insert lock securing with nut. Tighten nut to 3.4–4.5 N·m (30–40 **in-lbs**).
3. **If installing NEW Console Door Pushbutton Release (Part No. 53842-00C):** Install pushbutton assembly using **new** nut from Pushbutton Kit. Tighten nut to 3.4–4.5 N·m (30–40 **in-lbs**).
4. See service manual. Install seat. After installing seat, pull up on the seat to verify it is secure.

#### NOTE

*To keep the pushbutton lock assembly operating smoothly, lightly spray lubricant on the mechanism as needed.*

# SERVICE PARTS

is07992a

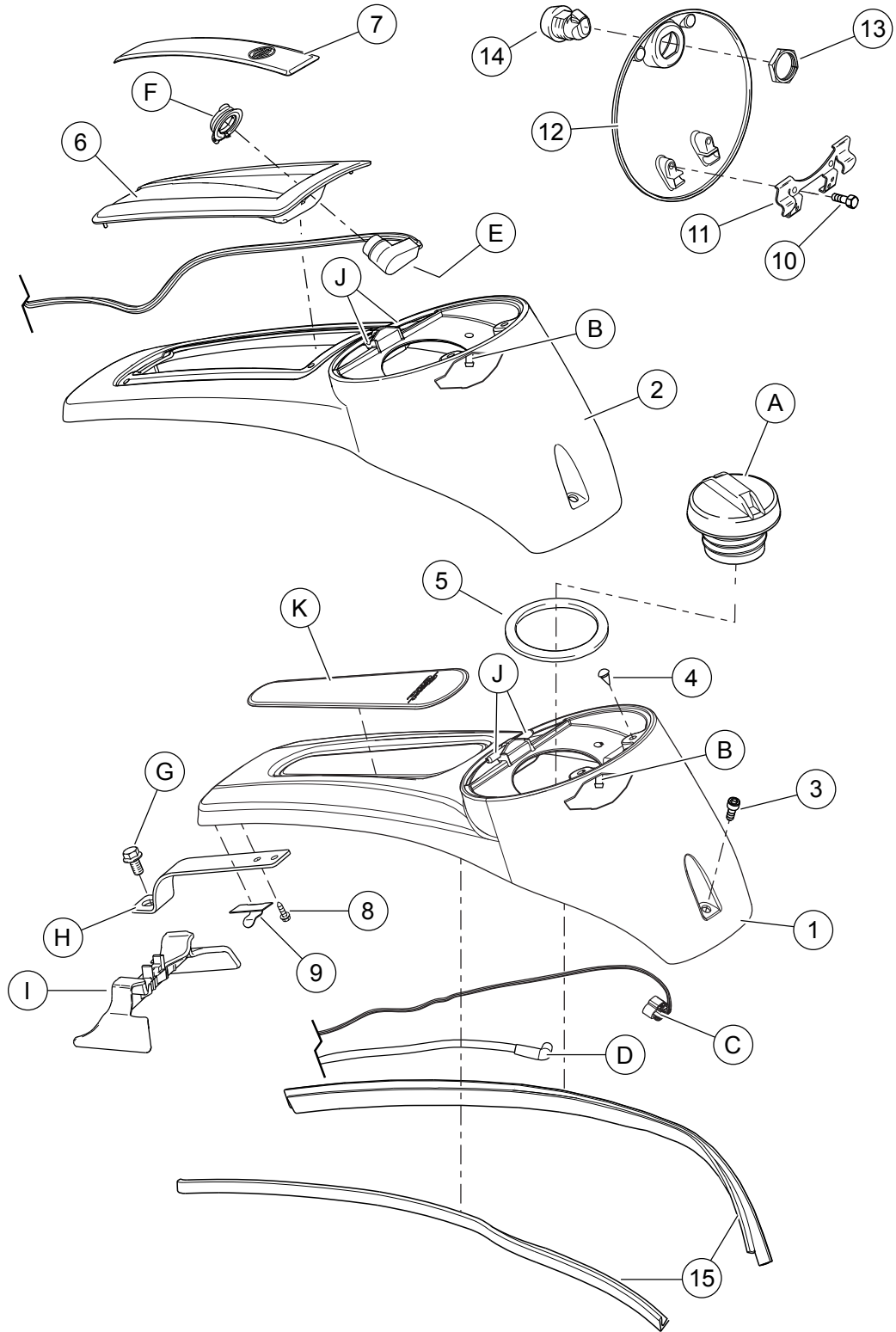


Figure 2. Service Parts: Console, Fuel Door, Fuel Door Release Kits

Table 1. Service Parts

Kit	Item	Description (Quantity)	Part Number
<b>70900463</b> Console (Gloss Black, <b>WITHOUT</b> CB Communications Port)	1	Console, solid center (black)	Not sold separately
	3	Screw, socket head, #10-24 x 1/2 in (25 mm) long	4856
	4	Bumper, cover (2)	61313-88
	5	Boot	61112-08
	8	Screw, self tapping (2)	4194
	9	Clip, adhesive (2)	10103
	15	Rubber molding (2)	71294-08

**Table 1. Service Parts**

<b>Kit</b>	<b>Item</b>	<b>Description (Quantity)</b>	<b>Part Number</b>
<b>70900501</b> Console (Gloss Black, <b>WITH</b> CB Communications Port)	2	Console, open center (black)	Not sold separately
	3	Screw, socket head, #10-24 x 1/2 in (25 mm) long	4856
	4	Bumper, cover (2)	61313-88
	5	Boot	61112-08
	6	Console insert, CB Communications Port	15341-08
	7	Console insert	14100083
	8	Screw, self tapping (2)	4194
	9	Clip, adhesive (2)	10103
	15	Rubber molding (2)	71294-08
	<b>70900465A</b> Fuel Tank Console Door (Gloss Black)	10	Screw, self tapping (2)
12		Door, console (black)	Not sold separately
<b>90300096</b> Smooth Pushbutton Fuel Tank Console Door Release (Gloss Black)	11	Clip, hinge mounting	Not sold separately
	13	Nut, hex	84850-92
	14	Push button lock, fuel door (black)	Not sold separately
<b>Items mentioned in text, but not included in kit:</b>			
	A	Fuel filler cap	
	B	Drain nipple	
	C	Socket housing	
	D	Drain tube	
	E	CB/Communications connector	
	F	Weather cap assembly	
	G	Screw	
	H	Bracket, console mount	
	I	Trim cover	
	J	Pin, fuel door hinge	
	K	Console insert. See P&A retail catalog or <a href="http://www.harley-davidson.com/Parts and Accessories">www.harley-davidson.com/Parts and Accessories</a> (English only)	