



INSTRUCTIONS

-J03452

REV. 2006-10-24

CHROME HEADLAMP BRACKET

GENERAL

Kit Number

69772-04

Models

For model fitment information, please see the P&A Retail Catalog or the Parts and Accessories section of www.harley-davidson.com (English only).

NOTE

A Service Manual for your model motorcycle is available from a Harley-Davidson Dealer.

Kit Contents

See Figure 3 and Table 1.

INSTALLATION

WARNING

To prevent accidental vehicle start-up, which could cause death or serious injury, remove maxi-fuse before proceeding. (00251a)

1. Remove the right side cover and maxi-fuse.

WARNING

To prevent accidental vehicle start-up, which could cause death or serious injury, disconnect negative (-) battery cable before proceeding. (00048a)

2. Remove the left side cover and disconnect the negative (-) battery cable.
3. See Figure 1. Remove fasteners (1) and fiber washers (2) from headlamp mounting bracket (4). Move headlamp assembly (3) down and away from headlamp bracket assembly. Retain fasteners and fiber washers for future use.
4. Remove fasteners (5) from tripleclamp (6). Remove headlamp mounting bracket. Retain fasteners for future use.

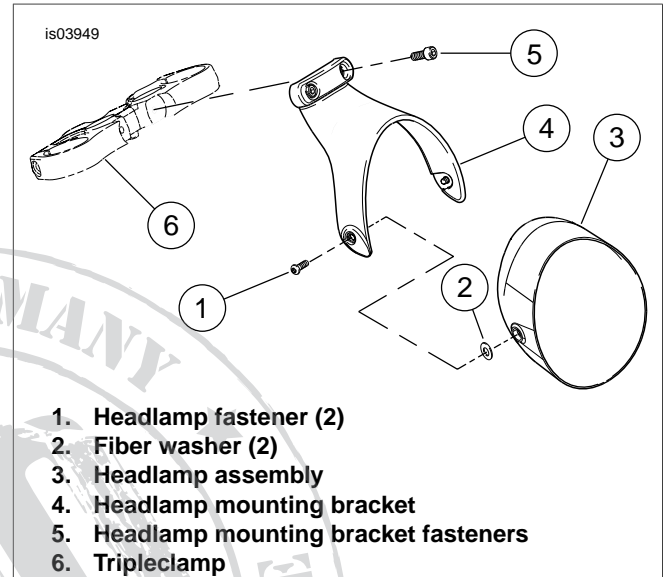


Figure 1. Headlamp Bracket Components

5. See Figure 3. Install headlamp mounting bracket (1) using fasteners retained from Step 3. Tighten fasteners to 11 - 18 Nm (97 - 159 in-lbs)
6. Install headlamp into headlamp mounting bracket using fiber washers and fasteners retained from Step 2. Tighten fasteners to 4.5 - 7.5 Nm (40 - 66 in-lbs).

NOTE

The headlamp bracket clips rest against the front forks and provide stability for the headlamp assembly.

7. Install headlamp bracket clips (2) using M6 x 35mm fasteners (3). Tighten fasteners to 8.2 - 10.7 Nm (73 - 95 in-lbs).
8. Connect negative (-) battery cable and install left side cover.
9. Install maxi-fuse and right side cover.

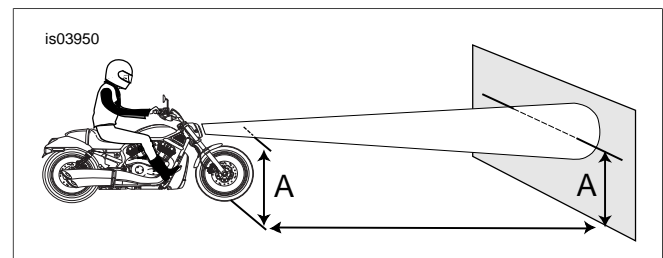


Figure 2. Motorcycle 7.6 m (25 ft) from Wall

WARNING

The automatic-on headlamp feature provides increased visibility of the rider to other motorists. Be sure headlamp is on at all times. Poor visibility of rider to other motorists can result in death or serious injury. (00030b)

10. Align the headlamp beam.
 - a. Adjust tire air pressure to specifications.
 - b. See Figure 2. On level pavement in low light, position the motorcycle 90° to a wall. Park motorcycle 7.6 m (25 ft) from point directly below front axle to wall.
 - c. Measure height from center of headlamp to floor (A) and draw a horizontal line on wall at same height (A).
 - d. Set ride height of motorcycle with intended load (rider, passenger, cargo). Stand motorcycle upright with handlebars squared.
 - e. Turn the ignition to ON and switch on the high beam.
 - f. Rock the headlamp assembly as necessary to aim the light beam with equal area of light above and below the line on the wall.
 - g. See Figure 1. Tighten the mounting bracket fasteners (2) to 4.5 - 7.5 Nm (40 - 66 in-lbs).

SERVICE PARTS

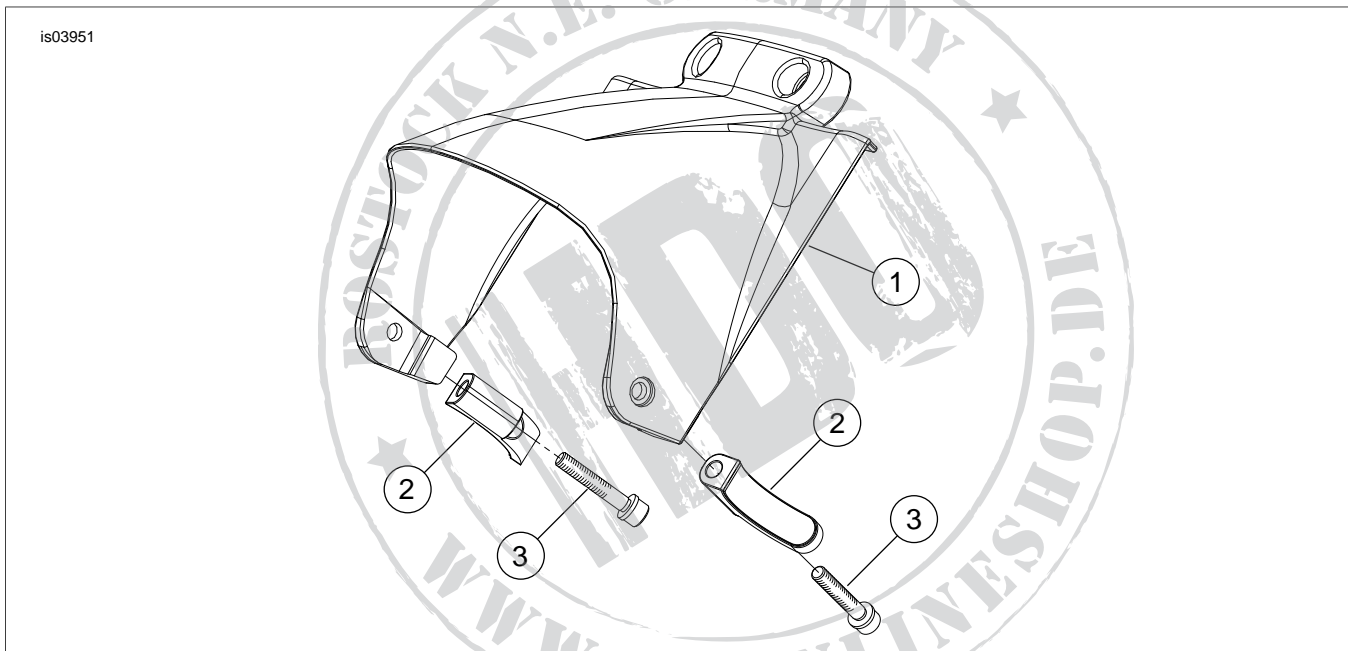


Figure 3. Service Parts: Chrome Headlamp Bracket

Table 1. Service Parts Table

| Item | Description (Quantity) | Part Number |
|------|--------------------------------------|-------------|
| 1 | Headlamp mounting bracket | 68897-05 |
| 2 | Headlamp bracket clip (2) | 69246-05 |
| 3 | Socket head cap screw, M6 x 35mm (2) | 966M |