



TRI-LINE SADDLEBAG ACCENTS, BLACK

6974

THANK YOU FOR CHOOSING KÜRYAKYN!

PROTECT YOURSELF AND OTHERS FROM POSSIBLE INJURY AND PROPERTY DAMAGE OR LOSS. PAY CLOSE ATTENTION TO ALL INSTRUCTIONS, WARNINGS, CAUTIONS, AND NOTICES REGARDING THE INSTALLATION, USE, AND CARE OF THIS PRODUCT.

NOTICE

This indication alerts you to the fact that ignoring the contents described herein may negatively affect product performance and functionality or damage the product itself or the product to which it is being attached.

MAKE SURE THE FOLLOWING PARTS HAVE BEEN INCLUDED IN THE KIT:

- 1 Right-side Tri-Line Saddlebag Accent — Black
- 1 Left-side Tri-Line Saddlebag Accent — Black
- 1 Alcohol Pad
- 1 Installation instructions

TOOLS SUGGESTED:

Warm soapy water and a clean rag, masking tape

NOTICE

These installation instructions contain important information. Ensure that the end user receives this copy and is aware of its importance for future reference.

STEP 1

Read and understand all steps in the instructions before starting the installation. Park the motorcycle on a hard, level surface and turn off the ignition.

NOTICE

Ensure proper adhesion of this product. Remove all grease, oil, bugs, dirt and other debris (including wax and polish) from the installation area. Kuryakyn WILL NOT issue a warranty for any improperly installed products.

Do not attempt this installation in temperatures below 50° F. Proper adhesive bonding ONLY occurs above 50° F.

STEP 2

Refer to **PIC 1**. Using warm soapy water and a clean rag, remove all dirt and debris from the installation area; allow the area to dry completely. Wipe the installation area with the included alcohol pad to remove any wax or polish; allow the area to dry completely.



CUSTOMER SERVICE

877.370.3604 (toll free)

INSTALLATION QUESTIONS

techsupport@kuryakyn.com
or call 715.247.2983

LIMITED WARRANTY

Kuryakyn warrants that any Kuryakyn products sold hereunder, shall be free of defects in materials and workmanship for a period of one (1) year from the date of purchase by the consumer excepting the following provisions:

- Kuryakyn shall have no obligation in the event the customer is unable to provide a receipt showing the date the customer purchased the product(s).
 - The product must be properly installed, maintained and operated under normal conditions.
 - Kuryakyn makes no warranty, expressed or implied, with respect to any gold plated products.
 - Kuryakyn shall not be liable for any consequential and incidental damages, including labor and paint, resulting from failure of a Kuryakyn product, failure to deliver, delay in delivery, delivery in nonconforming condition, or for any breach of contract or duty between Kuryakyn and a customer.
- Kuryakyn products are often intended for use in specific applications. Kuryakyn makes no warranty if a Kuryakyn product is used in applications other than intended.
- Kuryakyn electrical products are warranted for one (1) year from the date of purchase by the consumer. L.E.D.'S contained in components of Kuryakyn products will be warranted for defects in materials and workmanship for 3 years from the date of purchase where as all other components shall be warranted for one(1) year. This includes, but is not limited to; control modules, wiring, chrome & other components.
- Kuryakyn makes no warranty of any kind in regard to other manufacturer's products distributed by Kuryakyn. Kuryakyn will pass on all warranties made by the manufacturer and where possible, will expedite the claim on behalf of the customer, but ultimately, responsibility for disposition of the warranty claim lies with the manufacturer.

ABOUT OUR CATALOG

For purchasing Kuryakyn® products, you can receive a complete catalog free of charge. Send the Proof-of-Purchase below with your address to: Kuryakyn
454 County Road V V
Somerset, WI 54025-9031
Please indicate either Accessories Catalog for Harley-Davidson® or GL & Metric Cruisers.

Be sure to ask your local dealer about other Kuryakyn® products, the motorcycle parts and accessories designed for riders by riders.

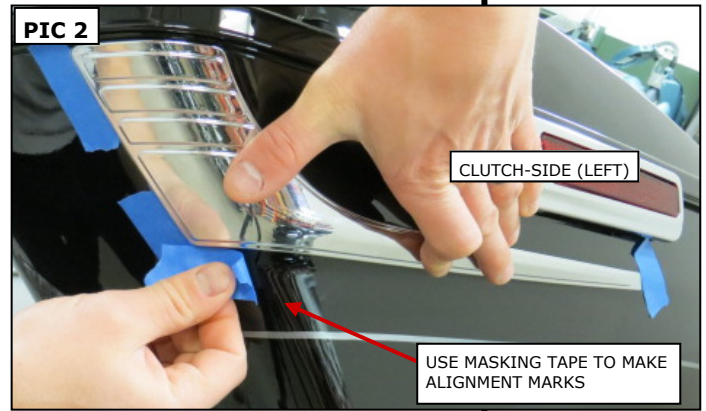
©2005 Kuryakyn USA® All Rights reserved.

PROOF OF PURCHASE



kuryakyn.com

STEP 3 Position the Tri-Line Saddlebag Accent as shown in **PIC 2**. Use masking tape to make alignment marks; remove the Accent.



STEP 4 Use your fingernail to rub the adhesive backing; this will activate the adhesive. Remove and discard the backing.

STEP 5 Refer to **PIC 3**. Using the marks made in **STEP 3**, align the Accent and press it into place for one minute; full bonding will occur after 24 hours. Remove and discard the masking tape.



STEP 6 Repeat **STEPS 2 through 5** for the other side.

Ride On!