



INSTRUCTIONS

-J06114

2015-02-25

SUPPLEMENTARY 12 VOLT POWER PORT

GENERAL

Kit Number

69201136

Models

For model fitment information, see the P&A Retail Catalog or the Parts and Accessories section of www.harley-davidson.com (English only).

▲ WARNING

The rider's safety depends upon the correct installation of this kit. Use the appropriate service manual procedures. If the procedure is not within your capabilities or you do not have the correct tools, have a Harley-Davidson dealer perform the installation. Improper installation of this kit could result in death or serious injury. (00333a)

NOTE

This instruction sheet references service manual information. A service manual for your model motorcycle is required for this installation. One is available from a Harley-Davidson Dealer.

Installation Requirements

NOTICE

Always use replacement fuses that are of the correct type and amperage rating. Use of incorrect fuses can result in damage to electrical systems. (00222a)

Electrical Overload

▲ WARNING

When installing any electrical accessory, be certain not to exceed the maximum amperage rating of the fuse or circuit breaker protecting the affected circuit being modified. Exceeding the maximum amperage can lead to electrical failures, which could result in death or serious injury. (00310a)

NOTICE

It is possible to overload your vehicle's charging system by adding too many electrical accessories. If the combined electrical accessories operating at any one time consume more electrical current than the vehicle's charging system can produce, the electrical consumption can discharge the battery and cause damage to the vehicle's electrical system. See an authorized Harley-Davidson dealer for advice about the amount of current consumed by additional electrical accessories or for necessary wiring changes. (00211c)

NOTE

- Do not use this device to jump-start or charge another vehicle.

- Do not connect this device to the battery tender.

The power port itself does not use any additional current. Verify that the current draw of any item plugged into it does not exceed the capacity of the vehicle electrical system.

Kit Contents

See Figure 2 and Table 1.

Installation

1. See Figure 2. Remove acorn nut (A). Remove washer (B). Save hardware for installation.
2. Slide power port (1) onto stud. The bracket is designed to nest over the existing horn bracket.
3. Install washer. Install acorn nut. Tighten nut to 13.6–20.3 N·m (120–180 in-lbs)

NOTE

Several variations of battery terminals and connecting hardware have been used over the years on Harley-Davidson motorcycles. Refer to Figure 1 to determine the terminal and hardware type used on your battery.

▲ WARNING

Disconnect negative (-) battery cable first. If positive (+) cable should contact ground with negative (-) cable connected, the resulting sparks can cause a battery explosion, which could result in death or serious injury. (00049a)

1. See Figure 1. Read the owner's manual to remove the seat and any other components necessary to access to the battery. Save hardware for installation.
2. Refer to the correct view in Figure 1 for your model. Break the battery negative connection by removing the hardware assembly from the negative battery terminal. Save hardware for installation.
3. Break the positive battery connection by removing the hardware assembly from the positive battery terminal. Save hardware for installation.
4. **2006 and later Dyna models:** Remove battery to allow harness routing.
5. Clean the battery terminals and cable connectors using a wire brush or sandpaper to remove any oxidation.
6. Apply a light coating of Harley-Davidson electrical contact lubricant (Part Number 99861-02), petroleum jelly or other corrosion retardant material to the battery terminals, cable connectors and ring terminals.



NOTICE

When routing wires and harnesses, verify that they are clear of moving parts, heat sources and pinch points to avoid wire damage or a short circuit, which could result in electrical system damage. (00579b)

- **Do not** tie off the harness end to the fuel tank vent hose.
 - **Do not** route along or secure harness to spark plug wires. Voltage from spark plug wires may damage device connected to power port.
 - Avoid vehicle components that could pinch or cut the harness.
 - Keep the harness away from vehicle components that radiate heat.
 - Take up any slack in the cable and store out of sight.
 - Secure the harness with cable straps (Part Number 10065), available from a Harley Davidson dealer.
7. Route harness along backbone of frame to battery.
 8. **2006 and later Dyna models:** See Figure 2. Open fuse holder (F). Remove fuse. Route ring terminals (D and E) and fuse holder through opening into battery compartment. Install fuse. Cover fuse.
 9. Secure harness with cable straps (2).

⚠ WARNING

Connect positive (+) battery cable first. If positive (+) cable should contact ground with negative (-) cable connected, the resulting sparks can cause a battery explosion, which could result in death or serious injury. (00068a)

10. Refer to the view in Figure 1 used for disassembly. Install the positive (red) ring terminal (E) on the positive battery post in the sequence shown. Tighten the positive terminal post bolt to the value shown in the owner's manual.
11. Attach the negative (black) lead of the ring terminal (D) to the negative battery post in the sequence shown. Tighten the negative terminal post bolt to the value shown in the owner's manual.
12. **2006 and later Dyna models:** Install battery.

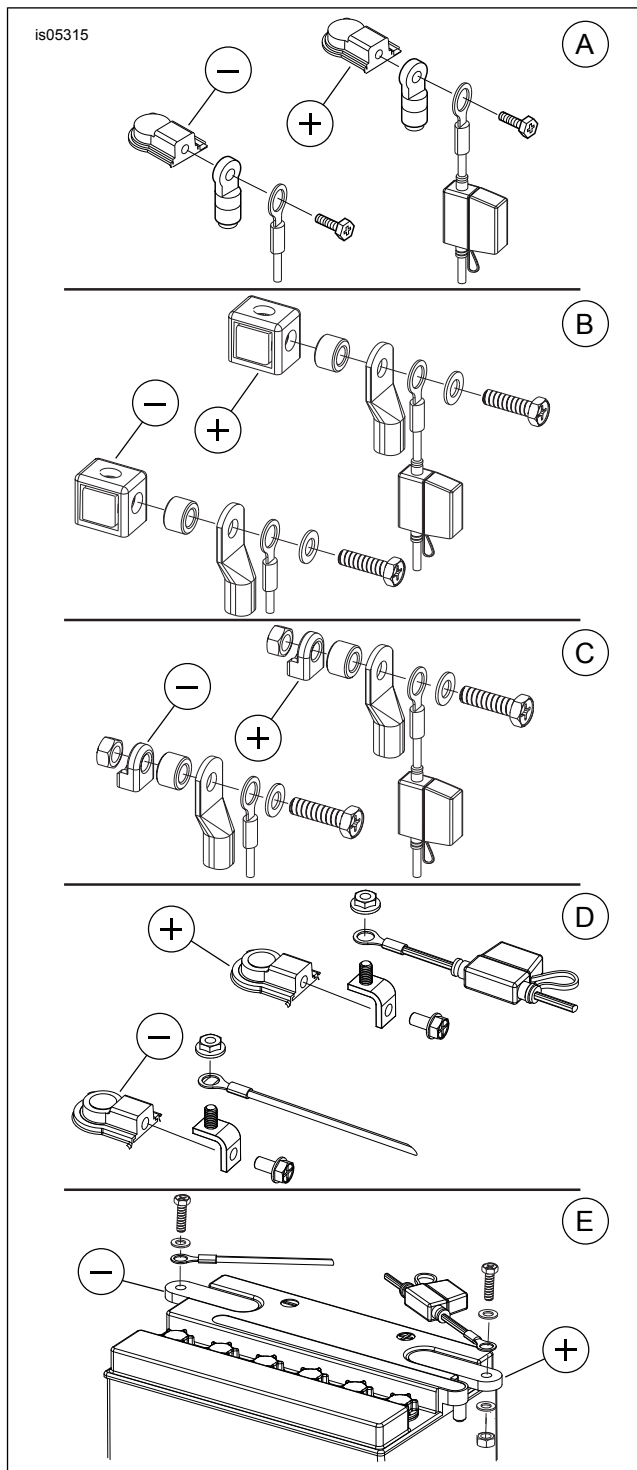


Figure 1. Battery Connection Types

⚠ WARNING

After installing seat, pull upward on seat to be sure it is locked in position. While riding, a loose seat can shift causing loss of control, which could result in death or serious injury. (00070b)

13. Install seat. Install side cover and other items removed earlier.

In Use

NOTE

- Power port is not switched. It remains "ON" even with ignition switch in "OFF" position.

- *DO NOT* leave items connected to the power port unattended.
- *Not recommend* for use when the engine is off. This can drain the battery.
- *It is not recommended* to attach an adapter or a device to power port permanently .
- *DO NOT* mount electronic devices with a hard drive memory on the vehicle for use or charging while the vehicle is in operation. Vehicle vibration can permanently damage the device. Refer to the device instructions to determine if the version used has a hard drive memory.
- *The accessory circuit is a 7.5A circuit. Check the rating of any accessories used with this power supply. Do not exceed the 7.5A rating.*
- *A replacement 7.5A Type ATO automotive fuse can be purchased locally.*

SERVICE PARTS

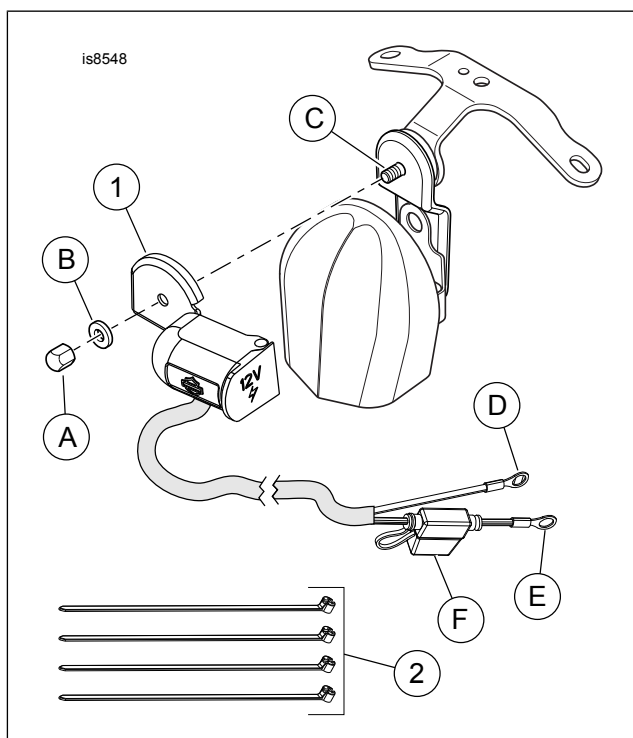


Figure 2. Service Parts: 12 Volt Power Port, Horn Mount

Table 1. Service Parts Table

Item	Description (Quantity)	Part Number
1	12 Volt power port, horn mount	Not sold separately
2	Cable straps (4)	10065
Items referenced in text, but not included in kit:		
A	Acorn nut	
B	Washer	
C	Stud	
D	Ring terminal, negative	
E	Ring terminal, positive	
F	Fuse holder	