



# INSTRUCTIONS

-J03107

REV. 09-16-2004

Kit Number 68732-02A and 68733-02A

## REAR TURN SIGNAL RELOCATION BAR

### General

The Rear Turn Signal Relocation Bar kit fits all Harley-Davidson® 2004 and later XL and 2002 and later FXD, FXDX and FXDL models and are intended for use with Leather Saddlebags. This kit does not fit with a Layback License Plate Mounting Kit (Part No. 59817-00A or 59822-00).

**Kit Number 68732-02A** fits domestic motorcycles.

**Kit Number 68733-02A** fits international (HDI) motorcycles.

#### NOTE

*This kit may be installed without saddlebags, which will result in open holes in the fender support covers. Hole plugs, (Part No. 53377-04 or 68446-00 for XL models, and Part No. 56239-93 for Dyna models), may be purchased from any Harley-Davidson Dealer.*

Harley-Davidson recommends that trained technicians at an authorized dealership install the rear turn signal relocation bar. A special tool is required to crimp the wire ends onto the turn signal wires.

See Service Parts illustration for kit contents.

#### WARNING

**The rider's safety depends upon the correct installation of this kit. If the procedure is not within your capabilities or you do not have the correct tools, have a Harley-Davidson dealer perform the installation. Improper installation of this kit could result in death or serious injury. (00308a)**

#### NOTE

*This instruction sheet references Service Manual instructions. A Service Manual for the year and model is available from any Harley-Davidson dealer.*

### Installation

#### Prepare the Motorcycle for Service

1. Follow the Service Manual instructions to remove the seat.

#### WARNING

**To prevent accidental vehicle start-up, which could cause death or serious injury, disconnect negative (-) battery cable before proceeding. (00048a)**

2. Disconnect the negative (-) battery cable from the battery.

### Remove and Disassemble the Turn Signals

1. Remove the taillamp lens from the taillamp base and depress the latches on the left [18] and right [19] turn signal connectors to remove the connectors.
2. Pull connectors out of the taillamp base and the wires out of the clips.
3. See Figure 1. Cut both the black (BK) and violet and brown (V/BN) wire 4 to 6 in. (10.2-15.2 cm) from the connector. Save the cut wire ends with the connector.

#### NOTE

*The wires are cut to fit through the new turn-signal bar. Remove the black conduit to allow splicing and stagger the cuts so the conduit will fit over sealed connectors after the wires are spliced back together.*

4. Follow the Service Manual TURN SIGNALS, REAR HOUSING REPLACEMENT instructions to remove the housing and support.

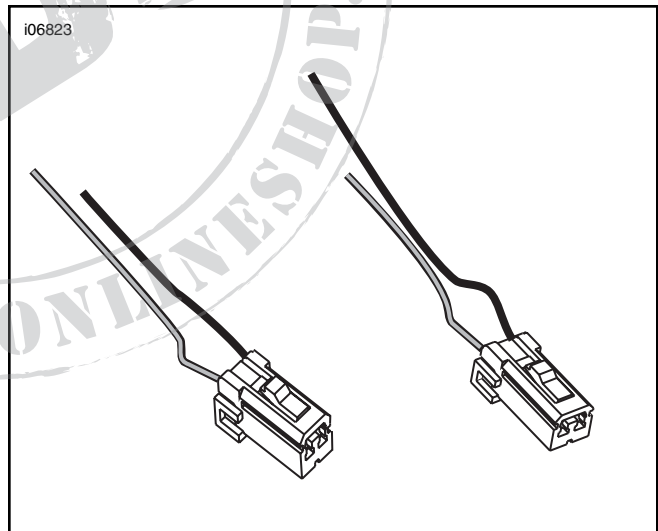


Figure 1. Cut Wire Ends with Connectors

- See Figure 2. Remove the lens (5) from the rear turn-signal housing (1).
- Carefully pry the reflector (3) and grommet (2) from the housing (1). Gently pull the wires out from the unthreaded housing hole.
- Remove the support (6), and fasteners.
- Repeat for the opposite turn signal.

### Remove the License Plate Bracket

Noting the parts and orientation, remove the existing license plate bracket from the fender. Retain the hardware for the kit license plate bracket installation.

### Assemble the Relocation Bar

- See Figure 3. Install the chrome jam nuts (4) onto each end of the turn signal bar (5).

#### NOTE

*Lubricate the wires with soapy water to ease insertion through the stalk or use a thin wire to pull the wires through.*

- Route the turn-signal wires in the following sequence:
  - In the **threaded** hole in the turn signal housing (1).
  - Through the recess cover plate (3).
  - Through the new 5/16 lockwasher (2).
  - Through the chrome jam nut.
  - Into the turn-signal bar (5) end.
  - Out the hole a few inches from the end of the bar.
- While pulling the turn-signal wires, guide each turn-signal socket and grommet into its housing.
- Screw the turn-signal housing (1) onto the threaded stud end being careful not to twist the wires. Leave the turn signal housing loosely fastened to the bar.
- Install bulb and lens.
- Repeat for the opposite turn signal housing.

### Install the Relocation Bar and License Plate Bracket

- See Figure 4. Place new pad (1) from kit onto fender, aligning the 3 holes with the 3 holes in the fender. Mark the location on the pad that aligns with the 4<sup>th</sup> hole in the fender.
- Remove pad from fender and cut an X pattern (2) over the mark.
- Route both wires for turn signals through the hole in license plate bracket, pad, and fender.
- Install new license plate bracket and the turn-signal bar with the two studs inserted through the fender bracket holes and into the holes in the pad and fender and thread on the stock nuts.
- Apply new red reflector to license plate bracket.
- Rotate turn-signals so that they are horizontal and pointed to the rear. Tighten chrome jam nuts so that the lights cannot rotate while riding the motorcycle.

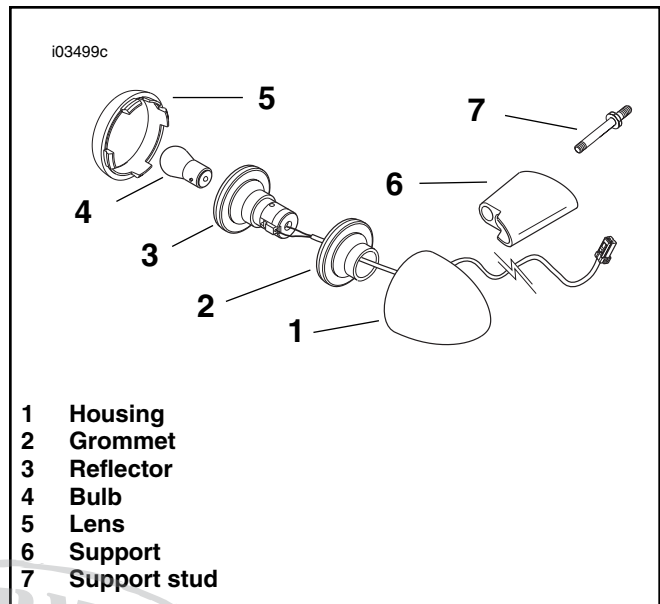


Figure 2. Rear Turn Signal (Sportster shown)

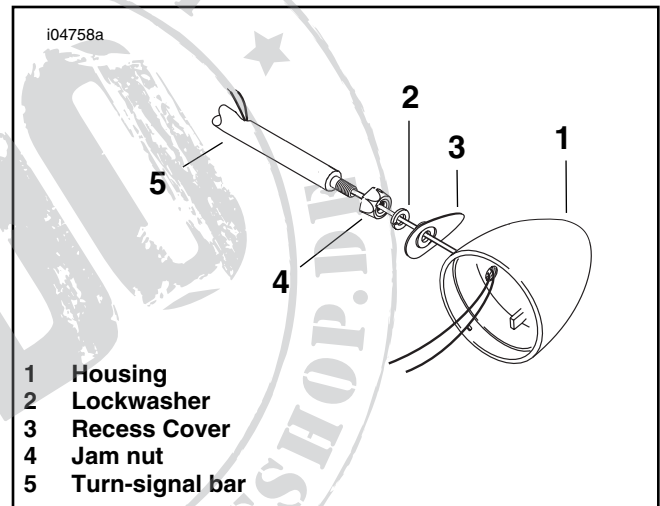


Figure 3. Turn Signal Relocation Bar

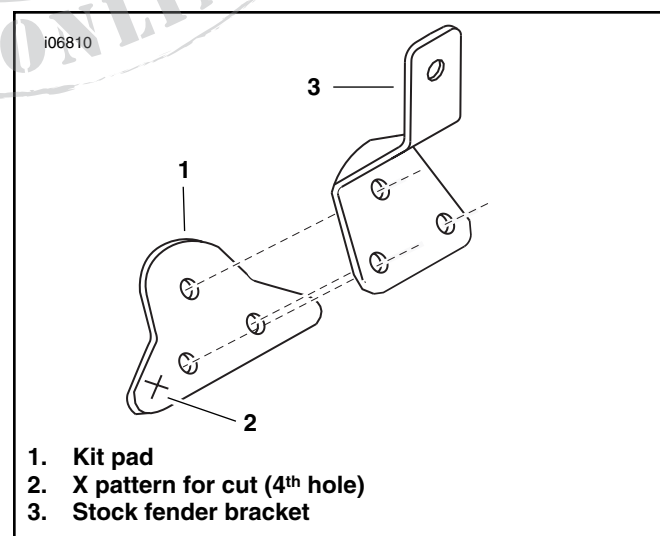


Figure 4. License Pad and Bracket

## Splice Turn Signal Wires to Connector Wires

### NOTE

Stagger the sealed connectors so the conduit will fit over the wires.

1. Strip 3/8 in.(9.5mm) insulation from the cut ends of the turn signal wires and the 4-6 in. wire ends with connectors cut from the turn signal wires.
2. Identify the red (22-18 gauge) crimp cavity of the crimping tool (Kent-Moore Part Number HD-38125-8 or equivalent) to match the sealed connector.
3. See Figure 5. In sequence, crimp the black (BK) wires into ends of one connector and the violet and brown (V/BN) wires into another.

### WARNING

Be sure to follow manufacturer's instructions when using the Robinair Heat Gun or any other radiant heating device. Failure to follow manufacturer's instructions can cause a fire, which could result in death or serious injury. (00379a)

- Always keep hands away from tool tip area and heat shrink attachment.
  - Avoid directing the heat toward any fuel system component. Extreme heat can cause fuel ignition/explosion resulting in death or serious injury.
  - Avoid directing heat toward any electrical system component other than the connectors on which heat shrink work is being performed.
  - Be sure to turn the "ON/OFF" switch to the "OFF" position after use.
4. Use the Ultra Torch UT-100 (Kent-Moore Part Number HD-39969), Robinair Heat Gun (HD-25070) with Heatshrink Attachment (HD-41183), or other radiant heating device, to apply heat from the center of the crimp out to each end until the sealant comes out of both ends .
  5. Follow Service Manual AMP MULTILOCK ELECTRICAL CONNECTORS instructions to remove the wires (both BK and V/BN) and socket terminals from the connector.
  6. Slide conduit over turn-signal wires. Push conduit through the 4<sup>th</sup> hole in fender, pad, bracket and back to the hole in the relocation bar.
  7. Follow the Service Manual AMP MULTILOCK CONNECTORS instructions to insert the wire socket terminals and wires back into the connector half.
  8. Repeat for the opposite turn signal.

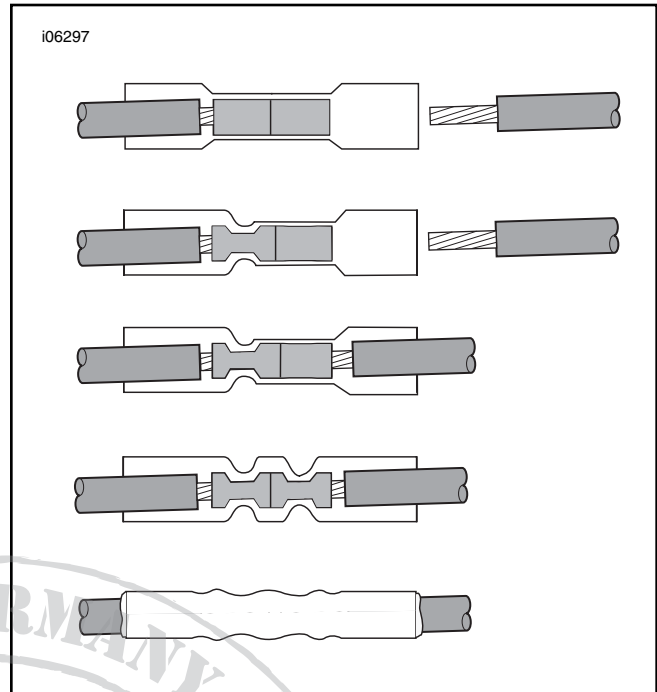


Figure 5. Sealed Connector Splice

## Route and Connect Turn Signal Wires

1. Wipe inside fender surface with isopropyl alcohol. Peel adhesive paper and position clips so as not to make contact with tire when riding. Press wire clips to fender,

### NOTE

Ensure turn signal wiring leads are not loose or bunched and are secured to the harness clips on underside of fender.

2. Route connectors through opening in fender and taillamp base and plug the left connector [18] and the right connector [19] into the taillamp base.
3. Secure wires to wire clips being sure that the wires are taut and will not drag on tire.

## Return the Motorcycle to Service

1. Connect the negative (-) battery cable.

### WARNING

Be sure that all lights and switches operate properly before before operating motorcycle. Low visibility of rider can result in death or serious injury. (00316a)

2. Turn ignition on and test for turn signal operation.

### WARNING

After installing seat, pull upward on front of seat to be sure it is in locked position. While riding, a loose seat can shift causing loss of control, which could result in death or serious injury. (00070a)

3. Follow Service Manual instructions to install the seat.



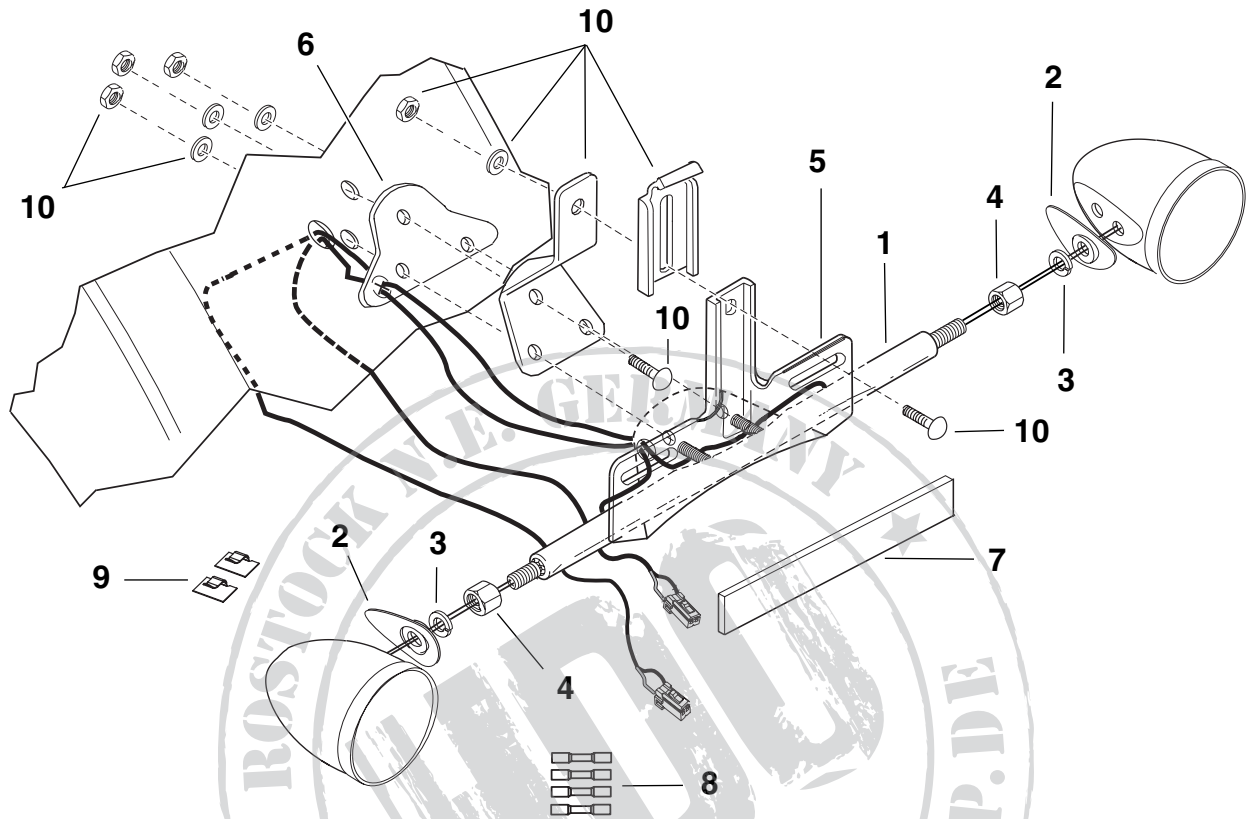
# Service Parts

Part No. 68732-02A and 68733-02A

Date 9/04

## Rear Turn Signal Relocation Bar

i03620e



Item	Description (Qty)	Part No.
1	Bar, turn-signal Kit 68732-02A (domestic) Kit 68733-02A (HDI)	68967-04 68965-04
2	Cover, turn-signal recess (2)	68028-03
3	Lockwasher, 5/16 (2)	7042
4	Jam nut, 5/16-18 (2)	7849
5	Bracket, license plate	60013-02
6	Pad, rear directional mount	68456-89
7	Reflector, red, license plate	59988-72A
8	Sealed splice, 22-18 gauge red (4)	70585-93
9	Clip, adhesive backed (2)	10102
10	Existing hardware Wire conduit (2) (not shown)	Original equipment (OE) - not in kit Not sold separately