



INSTRUCTIONS

-J04856

REV. 2009-07-27

DYNA REAR STOP/TAIL/TURN SIGNAL RELOCATION KIT

GENERAL

Kit Number

68544-10

Models

This kit is needed in order to complete the installation of a Saddlebag Kit on specific model motorcycles.

See the P&A retail catalog or the Parts and Accessories section of www.harley-davidson.com (English only) for available Saddlebag Kits and model fitment information.

Tools and Supplies Required

An Amp Multilock Crimper (HD-41609) is required for the proper installation of this kit.

A Terminal Pick (Snap-On® TT600-3 or equivalent) will aid in the installation of this kit.

Loctite® 271 Threadlocker and Sealant - Red (H-D Part Number 99671-97) is required for the proper installation of this kit.

Electrical Contact Lube (H-D Part Number 99861-02 or equivalent) is required for the proper installation of this kit.

WARNING

The rider's safety depends upon the correct installation of this kit. Use the appropriate service manual procedures. If the procedure is not within your capabilities or you do not have the correct tools, have a Harley-Davidson dealer perform the installation. Improper installation of this kit could result in death or serious injury. (00333a)

NOTE

This instruction sheet refers to service manual information. A service manual for this year/model motorcycle is required for this installation and is available from a Harley-Davidson dealer.

Kit Contents

See Figure 7 and Table 1.

PREPARATION

NOTE

Position the motorcycle upright using a suitable lift or jack.

WARNING

To prevent accidental vehicle start-up, which could cause death or serious injury, remove main fuse before proceeding. (00251b)

1. Refer to the service manual and follow instructions to remove the main fuse.
2. Follow the service manual instructions to remove the seat.

3. Raise the rear of the vehicle to allow access to the underside of the rear fender.

LICENSE BRACKET AND ILLUMINATOR REMOVAL

For Models WITHOUT a Center Tail Lamp

NOTE

See Figure 1. The reflector mounting block (2) is held to the fender (1) with double sided tape. Remove with care to avoid scratching paint.

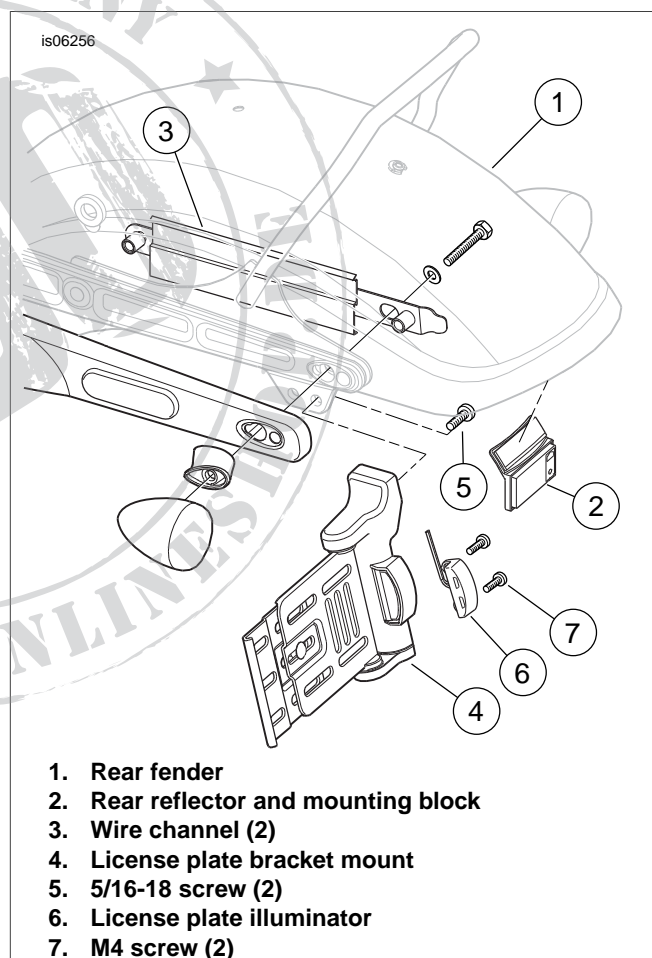


Figure 1. Rear Fender, Models Without Center Tail Lamp

1. Remove the rear reflector and mounting block (2) from the underside of the rear fender (1).
2. Remove the license plate from the vehicle (if installed). Retain the plate and attaching hardware.

NOTE

Before removing rear wiring, note wire routing.

3. Remove the rear lamp wiring from behind the wire channels (3) on the underside of the fender.
4. Disconnect the two-way license lamp connector [93] and the four-way right [18] and left [19] stop/tail/turn (STT) lamp connectors from the STT module in the area under the seat.
5. Remove the two 5/16-18 screws (5) retaining the license plate bracket mount assembly (4) to the fender support.
6. Remove the license plate illuminator (6) from the license plate bracket mount assembly. Save the illuminator. The bracket mount (4) and four screws (5, 7) can be discarded.
7. Proceed to **License Bracket and Illuminator Assembly**.

For Models WITH a Center Tail Lamp

NOTE

On these models, the license plate illuminator is part of the center tail lamp and is not removed.

1. Remove the three screws retaining the license plate bracket to the tail lamp housing. Remove the bracket and set aside for later assembly.
2. Proceed to **Rear Lamp Wiring, For Models WITH a Center Tail Lamp and RED Stop/Turn Signals or AMBER Turn Signals**.

LICENSE BRACKET AND ILLUMINATOR ASSEMBLY

For Models WITHOUT a Center Tail Lamp

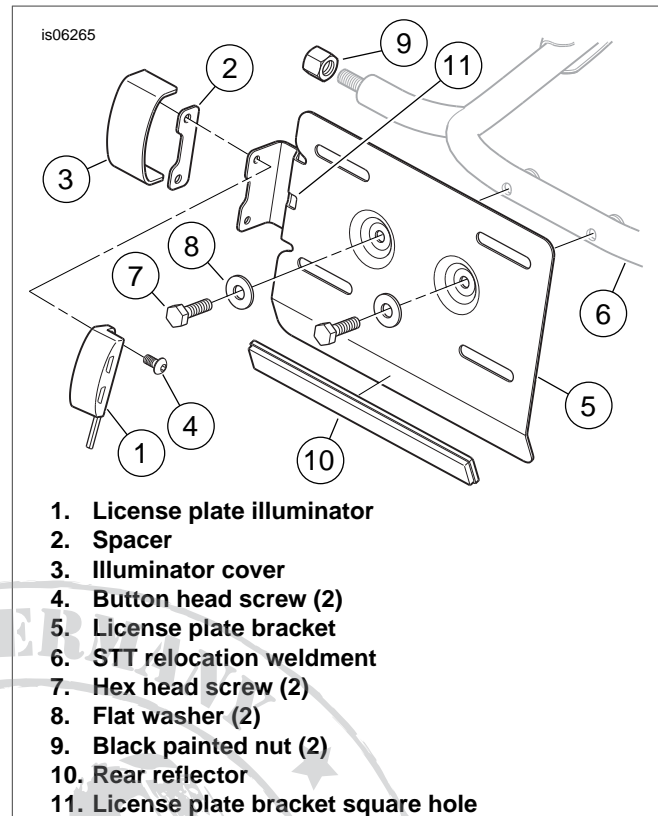
1. See Figure 7. Get the **new** license plate bracket (3), illuminator cover (4), spacer (6) and two M4 screws (5) from the kit, and the license plate illuminator (A) removed from the original equipment (OE) license plate bracket.
2. See Figure 2. Assemble the illuminator (1), spacer (2) and cover (3) to the license plate bracket (5) in the sequence shown, and tighten the screws (4) securely.
3. Get the STT relocation weldment (6), two screws (7) and two flat washers (8) from the kit.
4. Apply a few drops of Loctite 271 - Red to the **clean** screw threads.

Assemble the license plate bracket to the weldment as shown, and tighten the screws to 120 **in-lbs** (13.6 N-m).

NOTE

If using a metal tool to install the black nuts, protect the finish with cloth or paper to prevent damage.

5. Loosely install the black painted nuts (9) onto the threaded studs on each side of the STT relocation weldment.
6. Remove the wires and socket terminals from the two-way license plate illuminator socket housing. Set the socket housing aside for later installation.



1. License plate illuminator
2. Spacer
3. Illuminator cover
4. Button head screw (2)
5. License plate bracket
6. STT relocation weldment
7. Hex head screw (2)
8. Flat washer (2)
9. Black painted nut (2)
10. Rear reflector
11. License plate bracket square hole

Figure 2. License Plate Illuminator Installation

7. Get the rear reflector (10) from the kit.
8. Clean the reflector mounting area of the license bracket with a mixture of 50-70% isopropyl alcohol and 30-50% distilled water. Allow to dry thoroughly.

NOTE

Ambient temperature should be **at least 60 °F (16 °C)** for proper adhesion of the reflector to the bracket.

9. Remove the liner from the adhesive backing of the reflector. Carefully position the reflector to the reflector mounting area of the bracket, and press firmly into place. Hold the reflector in position with steady pressure for about one minute.

NOTE

Allow **AT LEAST 24 hours** after applying the reflector before exposing the area to vigorous washing, strong water spray or extreme weather.

The adhesive bond will increase to maximum strength after about 72 hours at normal room temperature.

10. Proceed to **Rear Lamp Wiring, For Models WITHOUT a Center Tail Lamp**.

REAR LAMP WIRING

For Models WITHOUT a Center Tail Lamp

1. Remove the STT lamps from the rear fender support covers per service manual instructions. Loosely insert the long screws through the fender, support and cover to hold the fender in position. Discard the STT lamp supports (standoffs).

NOTE

Note the wire colors and cavity locations before removing the terminals from the socket housings.

2. See Figure 3. Remove the black (10), violet (11) and blue (12) wires and socket terminals from the STT socket housings (13). Set the STT lamps and socket housings aside for later installation.
3. See Figure 7. Get three **new** wires, one black (10), one violet (9) and one blue (8), from the kit.

NOTE

If necessary, apply a light coat of liquid soap, window cleaner or all-purpose lubricant to the wire ends. Use a fish tape or mechanics' wire to guide the wires through the tube.

4. Strip about one inch (25 mm) of insulation from the unterminated end of **one** wire, and tie a fish tape or mechanics' wire to the stripped end. Feed the wire into one of the threaded studs on the STT relocation weldment.

Push the wire past the Y-joint until the end of the fish tape or mechanics' wire comes out through the forward opening (E) of the tube. Continue pulling and pushing the wires until the insulated wire end is exposed.

Remove the fish tape or mechanics' wire from the insulated wire end.

5. Strip the insulation from the remaining two wire ends in the same way, and twist the ends together to form a tight loop. Tie the fish tape or mechanics' wire to the stripped ends.

Feed the wires into the same threaded stud until the insulated wire ends are exposed at the forward opening.

6. Repeat steps 3, 4 and 5 for the opposite side threaded stud.

NOTE

If necessary, apply a light coat of liquid soap, window cleaner or all-purpose lubricant to the license plate illuminator wire ends and conduit. Use a fish tape or mechanics' wire if needed to guide the wires through the tube.

7. See Figure 2. Insert the license plate illuminator (1) wires and conduit into the square hole (11) in the license plate bracket (5).

See Figure 7. Guide the wires and conduit into the hole (C) in the STT relocation weldment tube, and push the wires past the Y-joint (D) on the left side of the tube until the insulated wire ends are exposed at the forward opening.

8. See Figure 3. Insert a thin-blade screwdriver or similar tool into the slot at the bottom of the lens (2) of one of the STT lamps, and twist to unsnap the lens from the housing (1). Push the bulb (3) in and rotate counterclockwise to remove.

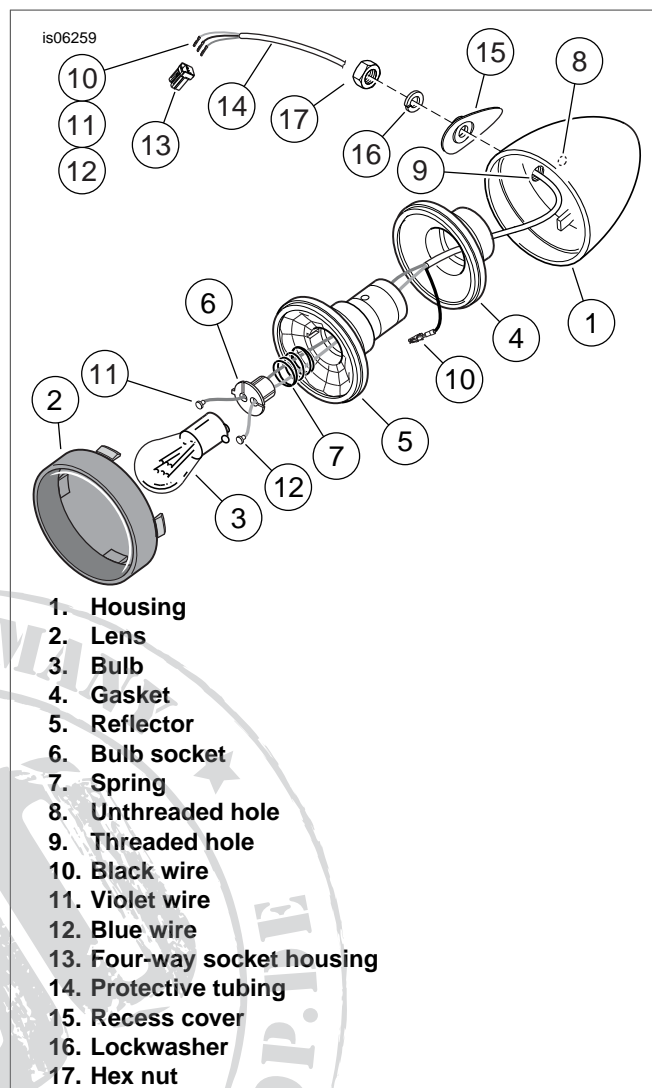


Figure 3. Stop/Tail/Turn Signal Lamp

9. Insert the tool between the outer edge of the rubber gasket (4) and the inside of the housing. Gently pry up the reflector (5) until free.

10. Remove the ground terminal and black wire (10) from the back of the reflector.

NOTE

Note the cavity location and color of each wire in the reflector bulb socket (6) before removing. The violet wire should be closest to the locating tab on the bulb socket. New wires from the kit must be installed in the same cavities.

11. Note the location and color of the two wires in the reflector bulb socket. Slide the bulb socket from the reflector. Remove the wires and button terminals from the bulb socket.

Guide the protective tubing (14) with all three wires out of the non-threaded hole (8) in the lamp housing, and discard.

12. Repeat steps 8 through 11 for the opposite side STT lamp.

NOTE

Be sure the recess cover, lockwasher and nut have been installed in the **exact** orientation and sequence shown **before** feeding the wiring through the STT housing.

13. See Figure 7. Place a lockwasher (14) onto one of the threaded studs on the STT relocation weldment. Place a chrome recess cover (13), in the orientation shown, onto the stud.
14. See Figure 3. Thread the wires from the threaded stud on the STT relocation weldment through the **threaded** hole (9) in the lamp housing (1) and the center of the rubber gasket (4).
15. Screw the lamp housing onto the stud. Be careful that the wires are not twisted or damaged as the weldment stud and lamp are assembled. Align the recess cover over the holes and recess in the lamp housing. The lockwasher will fit inside the hole in the recess cover.

Align the lamp housing so that the lens will be aimed approximately rearward. While holding the housing in position, hand tighten the nut against the lockwasher.

NOTE

Check that the STT wires are not pinched, and that the lockwasher will seat against the STT housing, not the recess cover.

16. Insert the terminal of the **new** black wire (10) into the cavity in the rear of the reflector (5) until it clicks into place.

Thread the blue wire (12) and violet wire (11) through the center of the reflector (5), and the spring (7), and insert the button terminals into the correct slots and cavities in the reflector bulb socket (6).

17. Assemble the lamp as follows:
 - a. Insert the spring and bulb socket back into the reflector, aligning the tab on the socket with the slot in the reflector.
 - b. Seat the reflector assembly in the rubber gasket, aligning the tab on the reflector with the slot in the gasket.
 - c. Install the reflector assembly, aligning the tab on the reflector with the slot inside the lamp and leaving about 1-2 inches (25-50 mm) of wire inside the lamp housing.

Carefully pull the individual wires at the front opening of the STT relocation weldment to remove excess wire from inside the tube.
 - d. Using the thumbs of both hands, apply even pressure around the outer edge of the reflector assembly until fully seated.
 - e. Liberally apply electrical contact lubricant (H-D Part No. 99861-02 or equivalent) to the contacts in the reflector socket and at the bottom of the bulb. Push in the bulb and rotate clockwise to install.
 - f. Install the lens in the lamp and gently apply thumb pressure until it snaps into place. Rotate the lens to position the slot at the bottom of the lamp.

18. Repeat steps 13 through 17 for the opposite side STT lamp.
19. See Figure 7. Get the protective tubing (12) from the kit, and cut into two equal-length pieces.

NOTE

If necessary, apply a light coat of liquid soap, window cleaner or all-purpose lubricant to the inside and outside of the protective tubing.

20. Slide one piece of protective tubing over the three STT lamp wires and into the forward opening (E) of the STT relocation weldment on each side. Continue sliding the tubing over the wires until it reaches at least as far as the Y-joint, or preferably the STT lamp housing.

21. Proceed to **Relocation Bracket Installation**.

For Models WITH a Center Tail Lamp and RED Stop/Turn Signals

1. See Figure 4. Remove the plastic plug (2) from the tail lamp access hole underneath the rear fender (1).

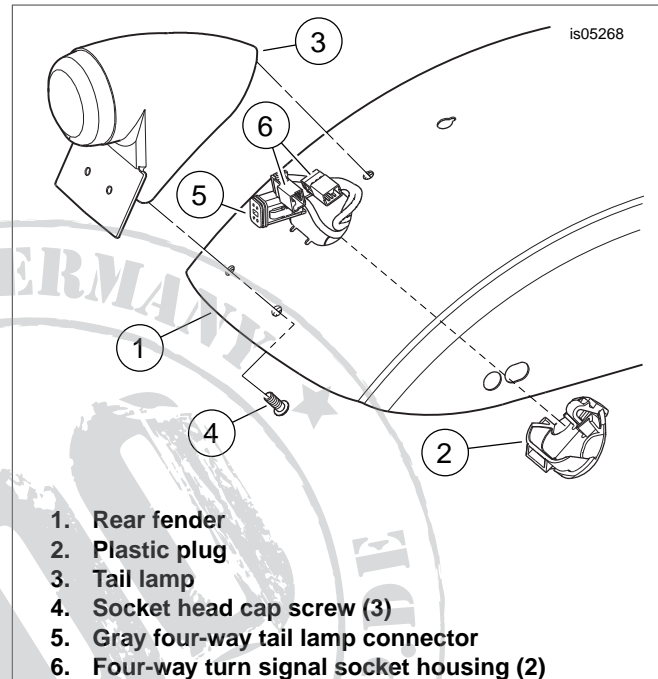


Figure 4. Rear Lighting Connections

2. Carefully remove the stop/turn signal wires and connectors from the inside of the tail lamp housing (3). Remove the stop/turn signal wires from the clips underneath the fender. Separate the four-way stop/turn signal socket housings from the rear lighting harness pin housings (6).
3. Remove the stop/turn signal lamps from the rear fender support covers per service manual instructions. Loosely insert the long screws through the fender, support and cover to hold the fender in position. Discard the stop/turn signal lamp supports (standoffs).

NOTE

Note the wire colors and cavity locations before removing the terminals from the socket housings.

4. See Figure 3. Remove the black (10), violet (11) and blue (12) wires and socket terminals from the stop/turn signal socket housings. Set the stop/turn signal lamps and socket housings aside for later installation.
5. See Figure 7. Get three **new** wires, one black (10), one violet (9) and one blue (8), from the kit.

NOTE

If necessary, apply a light coat of liquid soap, window cleaner or all-purpose lubricant to the wire ends. Use a fish tape or mechanics' wire to guide the wires through the tube.

- Strip about one inch (25 mm) of insulation from the unterminated end of **one** wire, and tie a fish tape or mechanics' wire to the stripped end. Feed the wire into one of the threaded studs on the STT relocation weldment.

Push the wire past the Y-joint until the end of the fish tape or mechanics' wire comes out through the forward opening (E) of the tube. Continue pulling and pushing the wires until the insulated wire end is exposed.

Remove the fish tape or mechanics' wire from the insulated wire end.

- Strip the insulation from the remaining two wire ends in the same way, and twist the ends together to form a tight loop. Tie the fish tape or mechanics' wire to the stripped ends.

Feed the wires into the same threaded stud until the insulated wire ends are exposed at the forward opening.

- Repeat steps 5, 6 and 7 for the opposite side threaded stud.
- See Figure 3. Insert a thin-blade screwdriver or similar tool into the slot at the bottom of the lens (2) of one of the stop/turn signal lamps, and twist to unsnap the lens from the housing (1). Push the bulb (3) in and rotate counterclockwise to remove.
- Insert the tool between the outer edge of the rubber gasket (4) and the inside of the housing. Gently pry up the reflector (5) until free.
- Remove the ground terminal and black wire (10) from the back of the reflector.

NOTE

Note the cavity location and color of each wire in the reflector bulb socket (6) before removing. The violet wire should be closest to the locating tab on the bulb socket. New wires from the kit must be installed in the same cavities.

- Note the location and color of the two wires in the reflector bulb socket. Slide the bulb socket from the reflector. Remove the wires and button terminals from the bulb socket.

Guide the protective tubing (14) with all three wires out of the non-threaded hole (8) in the lamp housing, and discard.

- Repeat steps 9 through 12 for the opposite side stop/turn signal lamp.

NOTE

*Be sure the recess cover, lockwasher and nut have been installed in the **exact** orientation and sequence shown **before** feeding the wiring through the stop/turn signal housing.*

- See Figure 7. Place a lockwasher (14) onto one of the threaded studs on the stop/turn signal relocation weldment. Place a chrome recess cover (13), in the orientation shown, onto the stud.

- See Figure 3. Thread the wires from the threaded stud on the stop/turn signal relocation weldment through the **threaded** hole (9) in the lamp housing (1) and the center of the rubber gasket (4).

- Screw the lamp housing onto the stud. Be careful that the wires are not twisted or damaged as the weldment stud and lamp are assembled. Align the recess cover over the holes and recess in the lamp housing. The lockwasher will fit inside the hole in the recess cover.

Align the lamp housing so that the lens will be aimed approximately rearward. While holding the housing in position, hand tighten the nut against the lockwasher.

NOTE

Check that the stop/turn signal wires are not pinched, and that the lockwasher will seat against the stop/turn signal housing, not the recess cover.

- Insert the terminal of the **new** black wire (10) into the cavity in the rear of the reflector (5) until it clicks into place.

Thread the blue wire (12) and violet wire (11) through the center of the reflector (5), and the spring (7), and insert the button terminals into the correct slots and cavities in the reflector bulb socket (6).

- Assemble the lamp as follows:

- Insert the spring and bulb socket back into the reflector, aligning the tab on the socket with the slot in the reflector.

- Seat the reflector assembly in the rubber gasket, aligning the tab on the reflector with the slot in the gasket.

- Install the reflector assembly, aligning the tab on the reflector with the slot inside the lamp and leaving about 1-2 inches (25-50 mm) of wire inside the lamp housing.

Carefully pull the individual wires at the front opening of the stop/turn signal relocation weldment to remove excess wire from inside the tube.

- Using the thumbs of both hands, apply even pressure around the outer edge of the reflector assembly until fully seated.

- Liberally apply electrical contact lubricant (H-D Part No. 99861-02 or equivalent) to the contacts in the reflector socket and at the bottom of the bulb. Push in the bulb and rotate clockwise to install.

- Install the lens in the lamp and gently apply thumb pressure until it snaps into place. Rotate the lens to position the slot at the bottom of the lamp.

- Repeat steps 14 through 18 for the opposite side stop/turn signal lamp.

- See Figure 7. Get the protective tubing (12) from the kit, and cut into two equal-length pieces.

NOTE

If necessary, apply a light coat of liquid soap, window cleaner or all-purpose lubricant to the inside and outside of the protective tubing.

- Slide one piece of protective tubing over the three stop/turn signal lamp wires and into the forward opening (E) of the stop/turn signal relocation weldment on each side. Continue sliding the tubing over the wires until it reaches at least as far as the Y-joint, or preferably the stop/turn signal lamp housing.

- Proceed to **Relocation Bracket Installation**.

For Models WITH a Center Tail Lamp and AMBER Turn Signals

- See Figure 4. Remove the plastic plug (2) from the tail lamp access hole underneath the rear fender (1).

2. Carefully remove the turn signal wires and connectors from the inside of the tail lamp housing (3). Remove the turn signal wires from the clips underneath the fender. Separate the four-way turn signal socket housings from the rear lighting harness pin housings (6).
3. Remove the turn signal lamps from the rear fender support covers per service manual instructions. Loosely insert the long screws through the fender, support and cover to hold the fender in position. Discard the turn signal lamp supports (standoffs).

NOTE

Note the wire colors and cavity locations before removing the terminals from the socket housings.

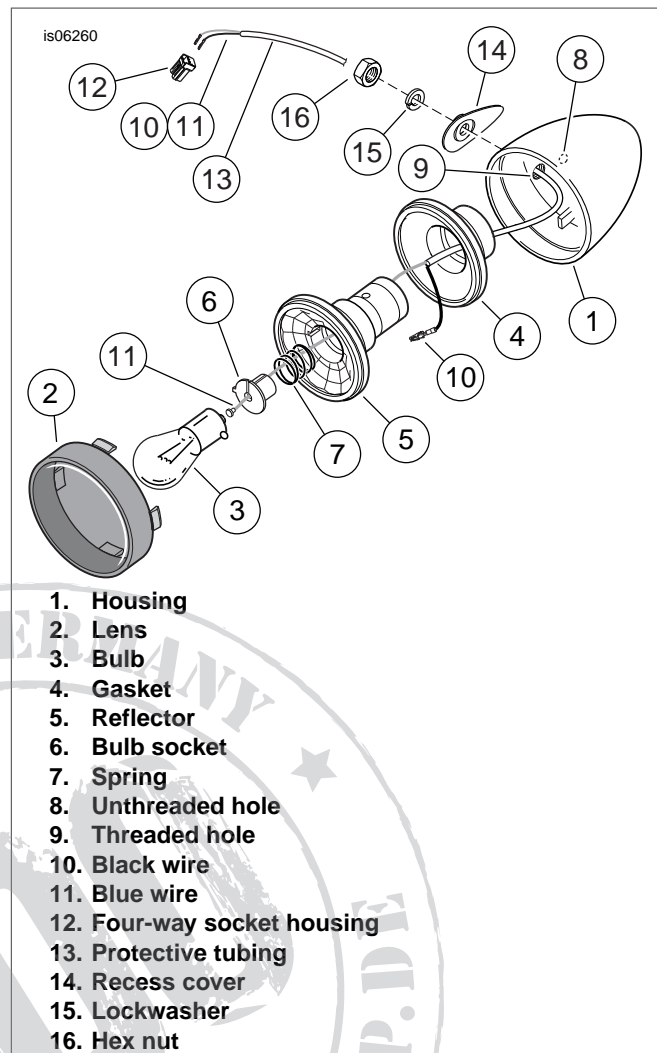
4. See Figure 5. Remove the black (10) and blue (11) wires and socket terminals from the turn signal socket housings. Set the turn signals and socket housings aside for later installation.
5. See Figure 7. Get two **new** terminated wires, one black (10), and one blue (12), from the kit. The two violet (11) wires can be discarded.

NOTE

If necessary, apply a light coat of liquid soap, window cleaner or all-purpose lubricant to the wire ends. Use a fish tape or mechanics' wire to guide the wires through the tube.

6. Strip about one inch (25 mm) of insulation from the unterminated end of **one** wire, and tie a fish tape or mechanics' wire to the stripped end. Feed the wire into one of the threaded studs on the turn signal relocation weldment. Push the wire past the Y-joint until the end of the fish tape or mechanics' wire comes out through the forward opening (E) of the tube. Continue pulling and pushing the wires until the insulated wire end is exposed. Remove the fish tape or mechanics' wire from the insulated wire end.

7. Strip the insulation from the remaining wire end in the same way. Tie the fish tape or mechanics' wire to the stripped end. Feed the wires into the same threaded stud until the insulated wire end is exposed at the forward opening.
8. Repeat steps 5, 6 and 7 for the opposite side threaded stud.
9. See Figure 5. Insert a thin-blade screwdriver or similar tool into the slot at the bottom of the lens (2) of one of the turn signal lamps, and twist to unsnap the lens from the housing (1). Push the bulb (3) in and rotate counterclockwise to remove.
10. Insert the tool between the outer edge of the rubber gasket (4) and the inside of the housing. Gently pry up the reflector (5) until free.



1. Housing
2. Lens
3. Bulb
4. Gasket
5. Reflector
6. Bulb socket
7. Spring
8. Unthreaded hole
9. Threaded hole
10. Black wire
11. Blue wire
12. Four-way socket housing
13. Protective tubing
14. Recess cover
15. Lockwasher
16. Hex nut

Figure 5. Turn Signal Lamp

11. Remove the ground terminal and black wire (10) from the back of the reflector.
12. Slide the bulb socket from the reflector. Remove the wire and button terminal from the bulb socket. Guide the protective tubing (14) with both wires out of the non-threaded hole (8) in the lamp housing, and discard.
13. Repeat steps 9 through 12 for the opposite side turn signal lamp.

NOTES

*Be sure the recess cover, lockwasher and nut have been installed in the **exact** orientation and sequence shown **before** feeding the wiring through the turn signal housing.*

If using certain side-specific P&A accessory turn signals, make sure the correct side turn signal is being installed.

14. See Figure 7. Place a lockwasher (14) onto one of the threaded studs on the turn signal relocation weldment. Place a chrome recess cover (13), in the orientation shown, onto the stud.
15. See Figure 5. Thread the wires from the threaded stud on the turn signal relocation weldment through the **threaded** hole (9) in the lamp housing (1) and the center of the rubber gasket (4).

16. Screw the lamp housing onto the stud. Be careful that the wires are not twisted or damaged as the weldment stud and lamp are assembled. Align the recess cover over the holes and recess in the lamp housing. The lockwasher will fit inside the hole in the recess cover.

Align the lamp housing so that the lens will be aimed approximately rearward. While holding the housing in position, hand tighten the nut against the lockwasher.

NOTE

Check that the turn signal wires are not pinched, and that the lockwasher will seat against the turn signal housing, not the recess cover.

17. Insert the terminal of the **new** black wire (10) into the cavity in the rear of the reflector (5) until it clicks into place.

Thread the blue wire (11) through the center of the reflector (5), and the spring (7), and insert the button terminal into the slot and cavity in the reflector bulb socket (6).

18. Assemble the lamp as follows:

- a. Insert the spring and bulb socket back into the reflector, aligning the tab on the socket with the slot in the reflector.
- b. Seat the reflector assembly in the rubber gasket, aligning the tab on the reflector with the slot in the gasket.
- c. Install the reflector assembly, aligning the tab on the reflector with the slot inside the lamp and leaving about 1-2 inches (25-50 mm) of wire inside the lamp housing.

Carefully pull the individual wires at the front opening of the turn signal relocation weldment to remove excess wire from inside the tube.

- d. Using the thumbs of both hands, apply even pressure around the outer edge of the reflector assembly until fully seated.
- e. Liberally apply electrical contact lubricant (H-D Part No. 99861-02 or equivalent) to the contact in the reflector socket and at the bottom of the bulb. Push in the bulb and rotate clockwise to install.
- f. Install the lens in the lamp and gently apply thumb pressure until it snaps into place. Rotate the lens to position the slot at the bottom of the lamp.

19. Repeat steps 14 through 18 for the opposite side turn signal lamp.

20. See Figure 7. Get the protective tubing (12) from the kit, and cut into two equal-length pieces.

NOTE

If necessary, apply a light coat of liquid soap, window cleaner or all-purpose lubricant to the inside and outside of the protective tubing.

21. Slide one piece of protective tubing over the two turn signal lamp wires and into the forward opening (E) of the turn signal relocation weldment on each side. Continue sliding the tubing over the wires until it reaches at least as far as the Y-joint, or preferably the turn signal lamp housing.

22. Proceed to **Relocation Bracket Installation**.

RELOCATION BRACKET INSTALLATION

NOTE

To maintain fender alignment, perform the following steps on one side of the vehicle before proceeding to the other side.

1. See Figure 6. **On one side of the vehicle**, remove and discard the TORX® screw (1) retaining the fender support cover, spacer (2), sissy bar, rear fender and mounting bracket (3) to the fender support. Remove the long screw loosely inserted earlier to hold the rear of the fender in position.

Note the position and orientation of the plastic wire channel (4) on the bracket. Carefully remove the channel from the bracket.

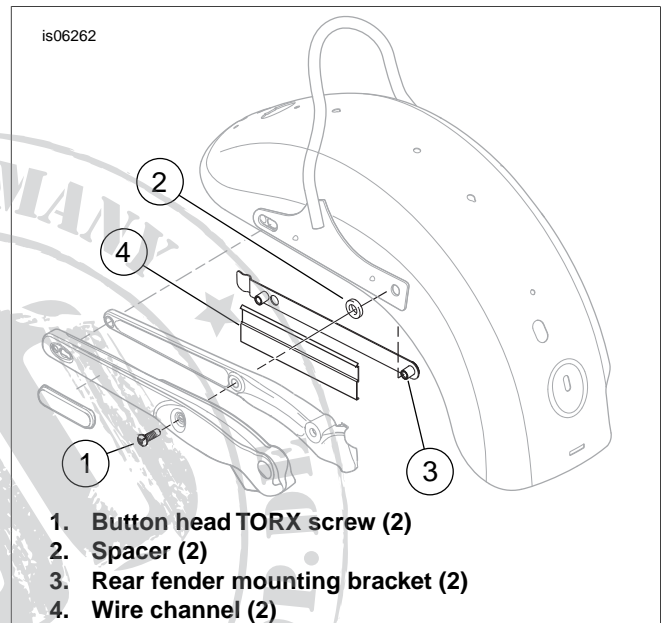


Figure 6. Rear Fender (FXDWG)

2. Get a **new** rear fender mounting bracket (3) from **this** kit, and the fender mounting hardware from the **saddlebag** kit. Snap the wire channel onto the new bracket in the same position and orientation as the original.

NOTE

The OE rear fender mounting brackets and any fender mounting brackets included **in the saddlebag kit** can be discarded.

3. Follow the instructions in the saddlebag kit to install the **front** of the new bracket to the rear fender, sissy bar, spacer, fender support and cover, but do not fully tighten at this time.

4. Get the relocation bracket and lamp assembly from the earlier procedure, and the fender rear mounting hardware from the **saddlebag** kit. Position the relocation bracket over the fender support covers, lining up the holes. Allow the lamp wires on both sides, and the license plate illuminator wires on the left side, to hang down between the relocation bracket and fender supports.

5. Route the wires **on this side only** underneath the fender lip and fender supports.

Capture the wires between the inside of the fender and the rear fender mounting bracket behind the rear mounting

- point. Do not pull the wires tight against the fender edges or the fender support covers.
- Follow the instructions in the saddlebag kit to install the rear of the relocation bracket **on this side only** to the fender support and cover,issy bar, rear fender and new rear fender mounting bracket, but do not fully tighten at this time.
 - Repeat Steps 1, 2 and 3 on the opposite side of the vehicle. Repeat Steps 5 and 6 on the opposite side of the vehicle.
 - Proceed to **Rear Lamp Wiring Connection to Vehicle**.

REAR LAMP WIRING CONNECTION TO VEHICLE

For Models WITHOUT a Center Tail Lamp

- See Figure 6. Route the wiring forward behind the wire channels (4) on each side of the vehicle, and through the wiring hole in the fender to the STT module in the area under the seat.
- Cut the excess length from the wires and conduit, leaving enough wire to comfortably connect to the module.
Refer to the notes made during the removal steps, and the wiring diagram and AMP ELECTRICAL CONNECTORS section in the service manual to install the socket terminals and wires from the STT lamps and license plate illuminator into the correct cavities of the four-way right [18B] and left [19B] STT socket housings and two-way license lamp socket housing [93B].

NOTE

Left side SST module connector has a violet/white wire. Right side connector has a brown/white wire.

- Connect the four-way STT lamp socket housings to the correct (left or right) pin housings on the STT module.
- Proceed to **Return to Service**.

For Models WITH a Center Tail Lamp

- Route the stop/turn signal lamp wiring up the inside of the fender to the center tail lamp. Cut the excess length from the wires and conduit, leaving enough wire to comfortably connect to the rear lighting harness coming from the fender conduit.
- Refer to the notes made during the removal steps, and the wiring diagram and AMP ELECTRICAL CONNECTORS section in the service manual to install the socket terminals and wires from the stop/turn signal lamps into the correct cavities of the four-way right [18B] and left [19B] stop/turn signal lamp socket housings.

NOTE

The left side rear lighting harness connector has a violet wire. The right side connector has a brown wire.

- Connect the four-way stop/turn signal lamp socket housings to the correct (left or right) pin housings on the rear lighting harness.
- Gently push the stop/turn signal wires and connectors, along with the gray four-way center tail lamp connector into the cavity inside the tail lamp housing. Install the plastic plug into the tail lamp access hole in the rear fender.
- Capture the turn signal wires beneath the clips at the sides of the reinforcement bracket on the underside of the fender and at the back of the rear fender mounting bracket.
 - Do not pull the stop/turn signal wires tight against the fender edges or the fender support covers.
 - Check that there are no loose wires in the wheel compartment.

Adjust the wire routing if necessary.

- Install the license plate bracket to the tail lamp housing with the three screws removed earlier. Tighten the screws to 30-40 **in-lbs** (3.4-4.5 Nm).
- Proceed to **Return to Service**.

RETURN TO SERVICE

- Align the turn signal housings so that the lenses are aimed straight rearward for proper visibility. While holding the turn signal housings in position, tighten the hex nuts and lock washers against the housings (not the recess covers) to 96-120 **in-lbs** (11-14 Nm).
- Verify that the ignition/key switch is turned to the OFF position.
Apply a light coat of petroleum jelly or corrosion retardant material to the negative battery terminal. Refer to the service manual to connect the negative battery cable.

WARNING

After installing seat, pull upward on seat to be sure it is locked in position. While riding, a loose seat can shift causing loss of control, which could result in death or serious injury. (00070b)

- Refer to the service manual and follow instructions to install the seat.

WARNING

Be sure that all lights and switches operate properly before operating motorcycle. Low visibility of rider can result in death or serious injury. (00316a)

- Check the rear lighting for proper operation.

SERVICE PARTS

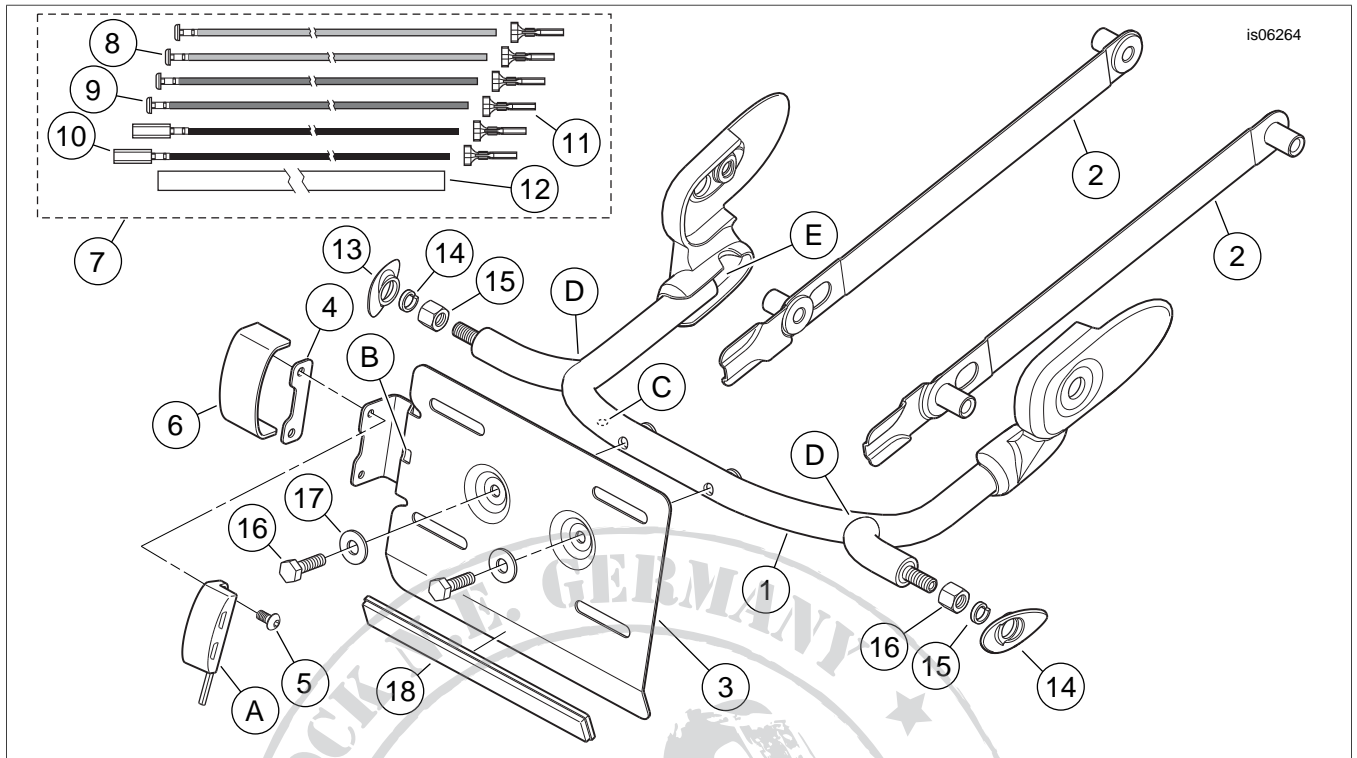


Figure 7. Service Parts, Dyna Rear Stop/Tail/Turn Signal Relocation Kit

SERVICE PARTS

Table 1. Service Parts

Item	Description (Quantity)	Part Number
1	STT/Turn signal relocation weldment	Not sold separately
2	Rear fender mounting bracket (2)	60937-10
3	Bracket, license plate	Not sold separately
4	Cover, license plate illuminator	Not sold separately
5	Hex socket head cap screw, M4-0.7 x 8 mm (0.31 inch) long (2)	Not sold separately
6	Spacer, license plate illuminator	Not sold separately
7	Wire harness components, turn signal (includes items 8-12)	Not sold separately
8	• Wire, blue, with button terminal one end (2)	Not sold separately
9	• Wire, violet, with button terminal one end (2)	Not sold separately
10	• Wire, black, with flat connector one end (2)	Not sold separately
11	• Socket terminal (6)	72991-01
12	• Protective tubing (2)	Not sold separately
13	Recess cover, turn signal housing, chrome (2)	68028-03
14	Lockwasher, helical spring, 5/16 (8 mm) ID (2)	7042
15	Hex nut, black, 5/16-18 (2)	Not sold separately
16	Screw, hex head, 1/4-20 x 7/8 inch (22 mm) long (2)	3802W
17	Flat washer (2)	6235
18	Reflector (rear), red	59988-72A
Items mentioned in text, but not included in kit:		
A	Original equipment (OE) license plate illuminator	
B	Square hole in license plate bracket	
C	Hole in TSS/turn signal relocation weldment tube	
D	Y-joint (2)	
E	Left forward end of TSS/turn signal relocation weldment tube	