



INSTRUCTIONS

-J07054

2015-11-01

STOP/TURN/RUN LED LAMPS

GENERAL

Kit Numbers

67800639, 67800640

Models

For model fitment information, see the P&A retail catalog or the Parts and Accessories section of www.harley-davidson.com (English only).

Installation Requirements

A SNAP-ON PICK (PART NUMBER: TT600-3) or equivalent, mini needle nose pliers and an adjustable pliers aid in the installation of this kit.

⚠ WARNING

The rider's safety depends upon the correct installation of this kit. Use the appropriate service manual procedures. If the procedure is not within your capabilities or you do not have the correct tools, have a Harley-Davidson dealer perform the installation. Improper installation of this kit could result in death or serious injury. (00333a)

NOTE

This instruction sheet refers to service manual information. A service manual for this year/model motorcycle is required for this installation. One is available from a Harley-Davidson dealer.

Electrical Overload

NOTICE

It is possible to overload your vehicle's charging system by adding too many electrical accessories. If the combined electrical accessories operating at any one time consume more electrical current than the vehicle's charging system can produce, the electrical consumption can discharge the battery and cause damage to the vehicle's electrical system. See an authorized Harley-Davidson dealer for advice about the amount of current consumed by additional electrical accessories or for necessary wiring changes. (00211c)

⚠ WARNING

When installing any electrical accessory, be certain not to exceed the maximum amperage rating of the fuse or circuit breaker protecting the affected circuit being modified. Exceeding the maximum amperage can lead to electrical failures, which could result in death or serious injury. (00310a)

Kit Contents

See Figure 5 and Table 1.

Installation

⚠ WARNING

To prevent accidental vehicle start-up, which could cause death or serious injury, remove main fuse before proceeding. (00251b)

1. See the service manual. Remove main fuse.
2. See Figure 1. Insert coin (1) or the blade of a small screwdriver into the notch (2) at the bottom of the lens cap (3). Carefully twist until the lens cap pops out of the lamp housing.
3. While pushing bulb in, rotate counterclockwise to remove.

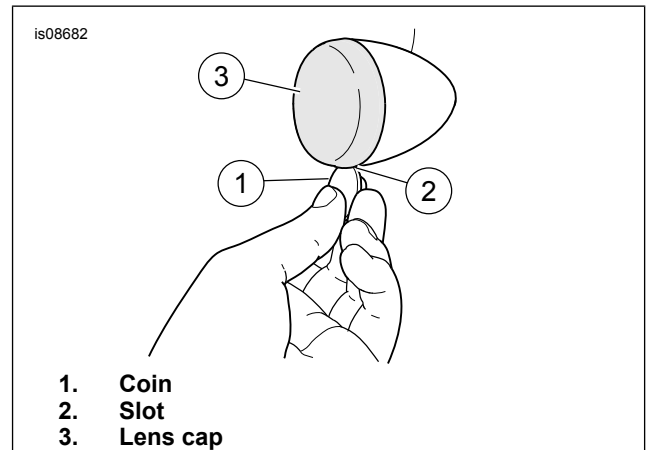


Figure 1. Remove Lens

NOTE

To ease splicing, cut wires to leave as much wire length as possible.

Some models have only two wires to lamp housing.

4. See Figure 2. Pull the reflector (5) from the lamp housing (2). Insert a right angle pick or a small hex key from inside the bulb socket through hole (4). Remove all terminals from lamp base (5).

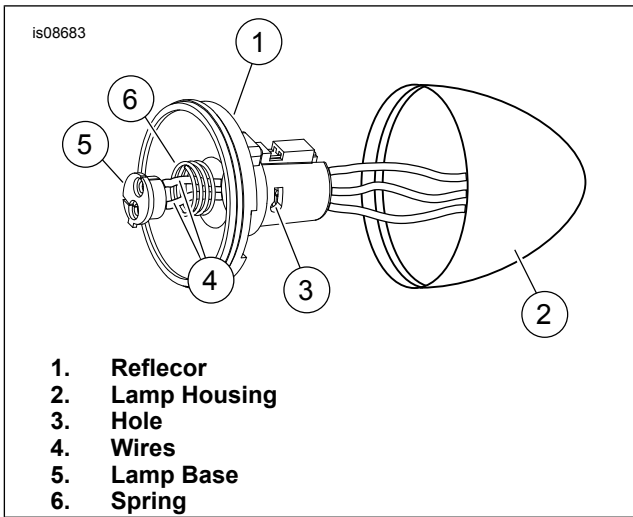


Figure 2. Socket, Lamp Housing, Wires, Lamp Terminal Base and Spring

5. Cut wires as close to terminal end as possible.
6. See Figure 5. Match harness wire (2) with the same wire color in the lamp housing. Cut the shrink insulator (A) off matching wire color.
7. See Figure 3. Slide color matched wires (4) all the way into the connector (5) as shown.
8. Using a pliers to crimp the button from the up position (6) to the down position (7).

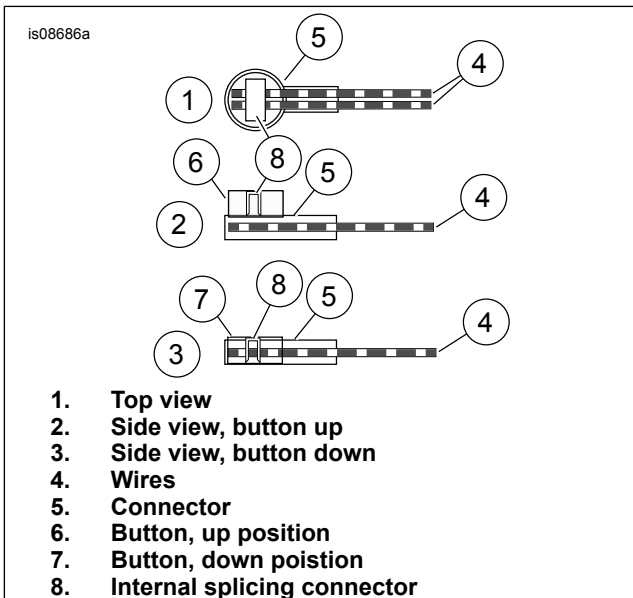


Figure 3. Splice Connector and wires

9. Repeat previous procedures and splice all wires.
10. Verify that all buttons are in the down position. Failure for the full engagement of internal splicing connectors (8) may result in a faulty splice. This can cause the lights to malfunction or not operate.

NOTE

Verify that the ignition switch is in the OFF position **before** installing the main fuse.

11. See Figure 5. Connect lamps (1) to harnesses (2).
12. See the service manual. Install main fuse.
13. Turn the ignition switch to IGNITION, but do not start the motorcycle. Check operation of all lamps.
14. See Figure 4. Align notch on gasket (4) with notch on LED lamp (5).
15. Align tabs (2) with socket slot (3). Slide LED lamp (1) into housing keeping LED lamp even and square to housing. The LED lamp is held in place with friction from the rubber gasket (6).

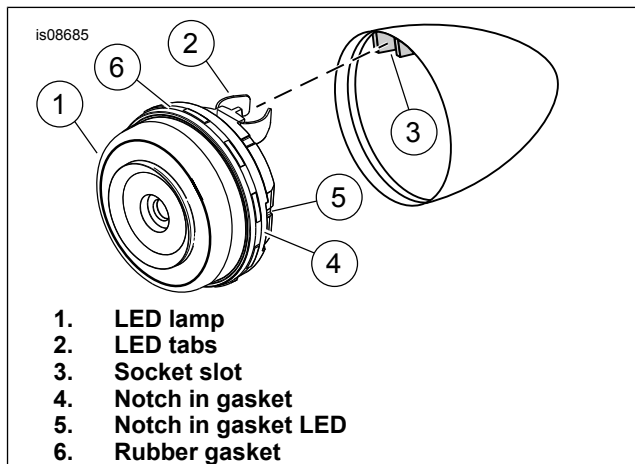


Figure 4. LED Tab and Lamp Housing

16. Snap lens cap into the lamp housing with notch on the bottom. Repeat for all lens caps.
17. See the service manual. Follow procedure for clearing BCM codes.
18. Program the BCM. **2014 and Later Touring and Sportster, 2012 Later Dyna, 2011 and Later Softail:** The BCM can self-learn if LED turn signals are installed when the Hazards are active after the LED installation. The BCM ignores the first two cycles of the Hazards. It then learns during the next ten Hazards. After 12 cycles of the Hazards the setting are updated in the BCM.
19. See the service manual. Verify that there are no BCM codes. If codes display, see the service manual. Follow procedure for clearing BCM codes.

⚠ WARNING

Be sure that all lights and switches operate properly before operating motorcycle. Low visibility of rider can result in death or serious injury. (00316a)

20. Verify that all lights are working properly before putting the motorcycle in service.

SERVICE PARTS

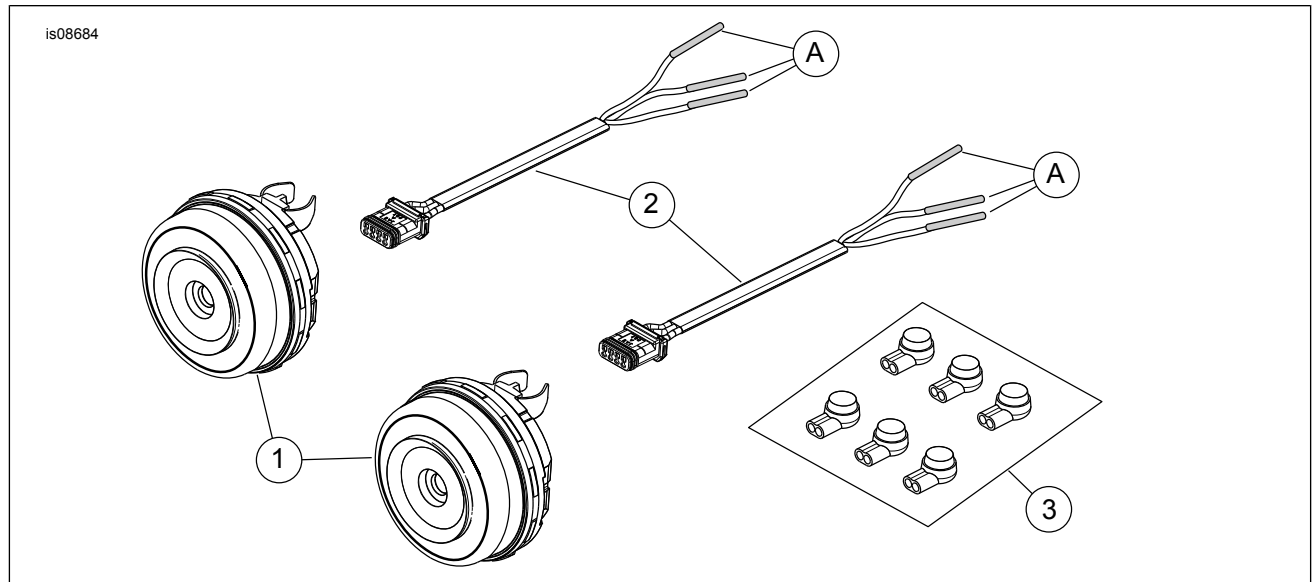


Figure 5. Service Parts: Run/Stop/Turn Lamp

Table 1. Service Parts Table

Kit	Item	Description (Quantity)	Part Number
Kit 67800639 Amber LED	1	Stop/Run/Turn LED lamp (2)	67800257
	2	Harness, LED (2)	69201498
	3	Connector, Butt-Splice, Seal (6)	69201499
Kit 67800640 Red LED	1	Stop/Run/Turn LED lamp (2)	67800308
	2	Harness, LED (2)	69201498
	3	Connector, Butt-Splice, Seal (6)	69201499
Items mentioned in text, but not included in kit:			
	A	Shrink insulation	