



INSTRUCTIONS

-J06236

2017-08-22

RUN/BRAKE/TURN AUXILIARY LIGHTS

GENERAL

Kit Numbers

67800589

Models

For model fitment information, see the P&A retail catalog or the Parts and Accessories section of www.harley-davidson.com (English only).

Installation Requirements

▲ WARNING

The rider's safety depends upon the correct installation of this kit. If the procedure is not within your capabilities or you do not have the correct tools, have a Harley-Davidson dealer perform the installation. Improper installation of this kit could result in death or serious injury. (00308a)

NOTE

This instruction sheet refers to service manual information. A service manual for this model motorcycle. One is available from a Harley-Davidson dealer.

Electrical Overload

NOTICE

It is possible to overload your vehicle's charging system by adding too many electrical accessories. If the combined electrical accessories operating at any one time consume more electrical current than the vehicle's charging system can produce, the electrical consumption can discharge the battery and cause damage to the vehicle's electrical system. See an authorized Harley-Davidson dealer for advice about the amount of current consumed by additional electrical accessories or for necessary wiring changes. (00211c)

▲ WARNING

When installing any electrical accessory, be certain not to exceed the maximum amperage rating of the fuse or circuit breaker protecting the affected circuit being modified. Exceeding the maximum amperage can lead to electrical failures, which could result in death or serious injury. (00310a)

This Run/Brake/Turn Auxiliary Light Kit requires up to **1.125 A** additional current from the electrical system.

Kit Contents

See Figure 3 and Table 1.

INSTALLATION

1. See the service manual. Remove seat.

2. See the service manual. Remove main fuse.

3. See the service manual. Remove the right saddlebag.

4. See Figure 1. Remove nuts (4 and 11). Do not remove screws. Screws are an aid in locating the backing plate.

NOTE

The surface where the tape is applied must be cleaned. Failure to clean this area results in a faulty installation.

5. With the adhesive backing still in place, test fit the Run/Brake/Turn Auxiliary Light.

6. Clean the area on casting (9) where the tape is installed with a mixture of equal parts of isopropyl alcohol and distilled water. Allow to dry completely.

NOTE

Washers must be installed. Failure to install the washers result in a crack in the backing plate.

7. Install crush washers (3 and 6) onto screws.

8. Remove the adhesive tape backing (8).

9. Position backing plate over screws. Washers are designed to fit into the holes of backing plate.

10. Apply firm sliding pressure in tape areas.

11. Install nut (4) on screw (2). Verify that washers are in the holes of backing plate. Tighten.

Torque: 40.7–50.2 N·m (30–37 ft-lbs) *Nut*

NOTE

Use caution when tightening screw. Over tightening screws will crack the LED light.

12. Install nut (11) on screw (1). Tighten.

Torque: 20.3–27.1 N·m (15–20 ft-lbs) *Nut*

13. Install LED light (10). Secure with screws (5). Tighten.

Torque: 0.9 N·m (8 in-lbs) *Screws*

14. Repeat previous steps on the left side.

15. See Figure 2. Disconnect harness connector (1). Connect kit wire harness to connector (1). Connect OE plug to kit connector.

16. Test lights. Connect harness so the lights work correctly.



17. Starting at the light, route the wire along the casting. Secure wires. Hold the harness to the casting so there is no slack. Secure with cable straps.

18. Repeat previous step for the other side.

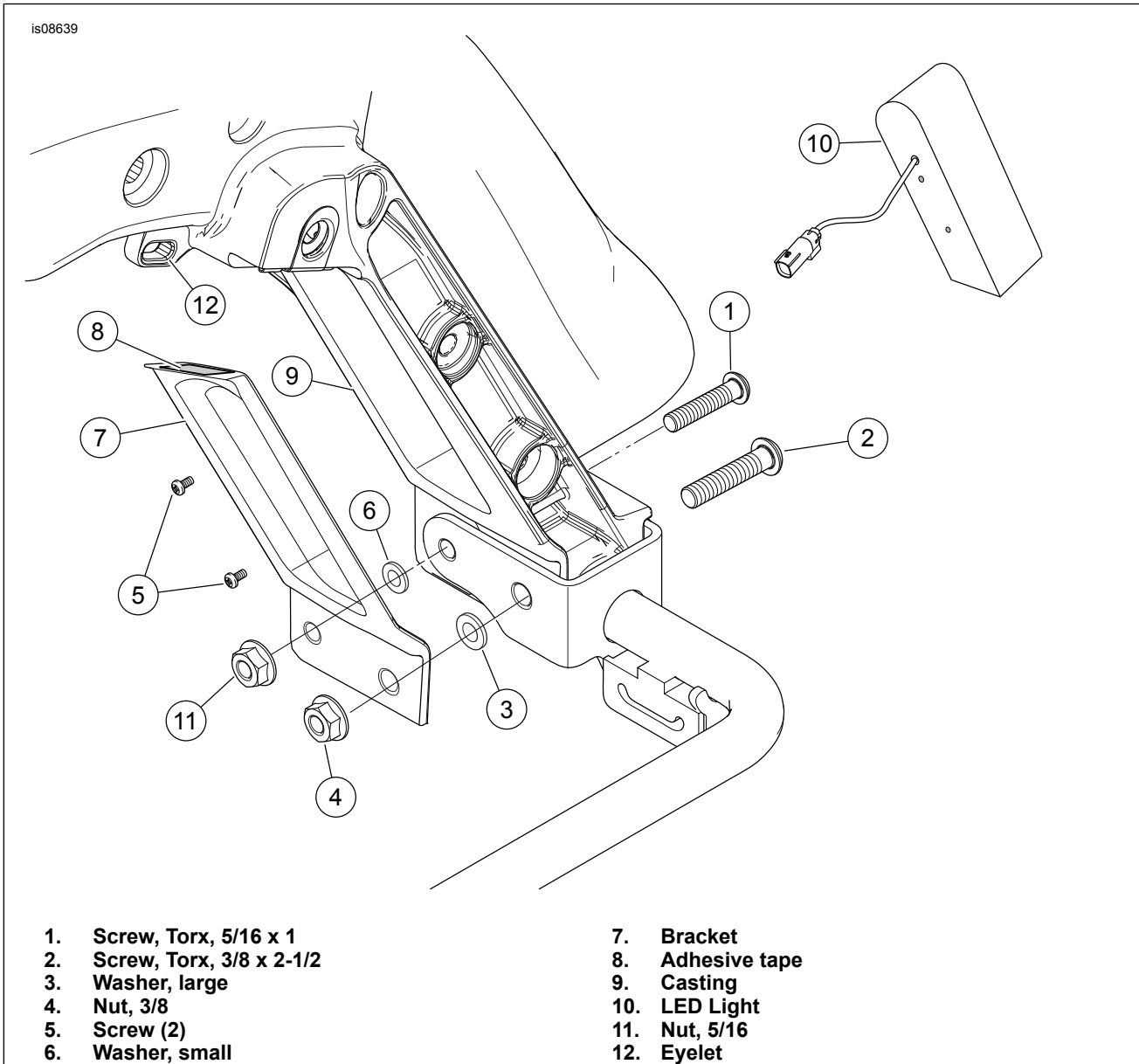


Figure 1. Run/Brake/Turn Auxiliary Lights

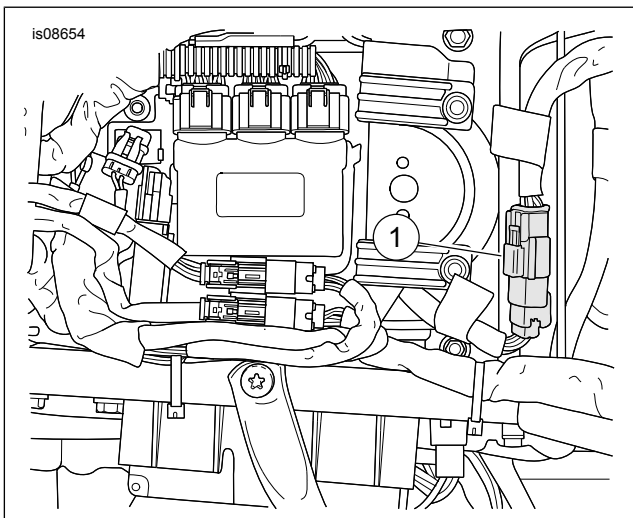


Figure 2. Run/Brake Light Connector [7A]

19. See the service manual. Install seat. After installing seat, pull up on the seat to verify that it is secure.

⚠ WARNING
 After installing seat, pull upward on seat to be sure it is locked in position. While riding, a loose seat can shift causing loss of control, which could result in death or serious injury. (00070b)

20. Test the rear stop, tail, turn and hazard lighting functions.

21. One month after install verify screws (5), See Figure 1, are tight.

SERVICE PARTS

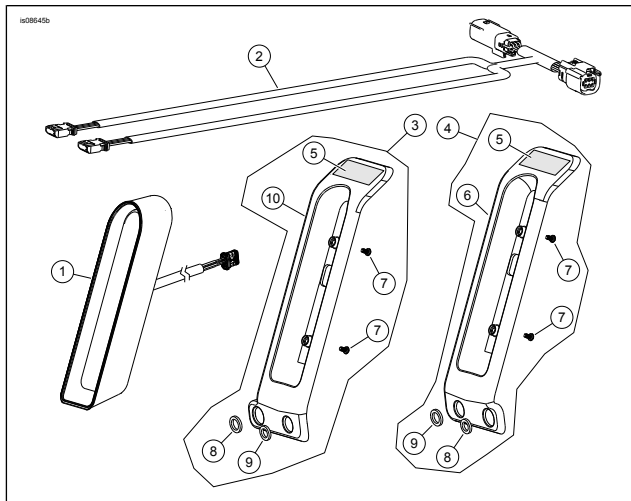


Figure 3. Service Parts: Run/Brake/Auxilliary Light Kit

Table 1. Service Parts

Item	Description (Quantity)	Part Number
1	LED light (2)	67800757
2	Wire harness	69201311
3	Backing plate kit, RH (includes items 5, 6, 7, 8, 9)	67800758
4	Backing plate kit, LH (includes items 5, 7, 8, 9, 10)	67800759
5	Tape, two sided	11100178
6	Backing plate, RH	Not Sold Separately
7	Screws (2)	Not Sold Separately
8	Washer, crush, large	Not Sold Separately
9	Washer, crush, small	Not Sold Separately
10	Backing plate, LH	Not Sold Separately