



# INSTRUCTIONS

-J05404

2016-07-18

## 5-3/4 INCH HEADLAMP HOUSING

### GENERAL

#### Kit Number

67700093

#### Models

This kit is needed in order to allow the installation of a 5-3/4 inch (14.6 cm) LED headlamp (Part Nos. 73273-11 or 67700043) on specific model motorcycles. For model fitment information, see the P&A retail catalog or the Parts and Accessories section of [www.harley-davidson.com](http://www.harley-davidson.com) (English only).

#### Service Manual Required

##### ▲ WARNING

The rider's safety depends upon the correct installation of this kit. Use the appropriate service manual procedures. If the procedure is not within your capabilities or you do not have the correct tools, have a Harley-Davidson dealer perform the installation. Improper installation of this kit could result in death or serious injury. (00333a)

##### NOTE

This instruction sheet refers to service manual information. A service manual for this year/model motorcycle is required for this installation and is available from a Harley-Davidson dealer.

#### Kit Contents

See Figure 1 and Table 1.

### INSTALLATION

##### NOTE

For 2007 and later vehicles equipped with security siren:

- Verify that the Hands-Free Fob is present.
- Turn the ignition key switch to IGNITION.

##### ▲ WARNING

To prevent accidental vehicle start-up, which could cause death or serious injury, remove main fuse before proceeding. (00251b)

1. Follow service manual instructions to loosen the fuel tank.
2. Separate four-way headlamp harness socket housing [38B] from main harness pin housing [38A].
3. Remove and retain the fasteners for the headlamp housing, and remove the headlamp assembly from the mount block.

4. Disassemble the headlamp assembly. Discard the lamp assembly, headlamp shell assembly, and chrome trim ring.

##### NOTE

When assembling headlamp, make sure slots and tabs in headlamp, retainer ring and bezel are aligned.

5. See Figure 1. Install the bumpers (3 and 4) from the kit onto the leading edge (A) of the mounting bracket inside the **new** black headlamp housing (1) as shown.
6. Position the retainer ring (2) into the front face of the headlamp housing in the orientation shown, and press firmly into place.

##### NOTE

To enable the headlamp to seat properly on the retainer ring, the connector must be positioned at the rear of the headlamp housing, toward the lower right (lower left when looking into the housing).

7. Mate the connector (B) inside the headlamp housing with the connector on the **new** LED headlamp (C, purchased separately).
8. Position the connector inside the headlamp housing near point (D), and insert the headlamp into the housing. Adjust the position of the connector as necessary to seat the lamp flat against the retainer ring.
9. Install the **new** black bezel (5) over the front of the headlamp housing, and fasten with the **new** Phillips head screw (6) from the kit. Tighten to 0.5–0.9 N-m (5–8 in-lbs).
10. Attach the headlamp assembly to the mount block using the fasteners removed earlier. Tighten enough to hold in position.
11. Connect the four-way headlamp harness socket housing [38B] to main harness pin housing [38A] until it clicks into place.

##### NOTE

Verify that the ignition key switch is in the OFF position **before** installing the main fuse.

12. Follow service manual instructions to tighten the fuel tank.
13. Refer to the service manual and follow the instructions to install the main fuse.
14. Test the headlamp for proper operation.

-J05404



Many Harley-Davidson® Parts & Accessories are made of plastics and metals which can be recycled. Please dispose of materials responsibly.

1 / 2

15. Adjust the headlamp alignment per service manual instructions, then tighten the headlamp mounting fasteners to 33.9–40.7 N·m (25–30 ft-lbs).

## SERVICE PARTS

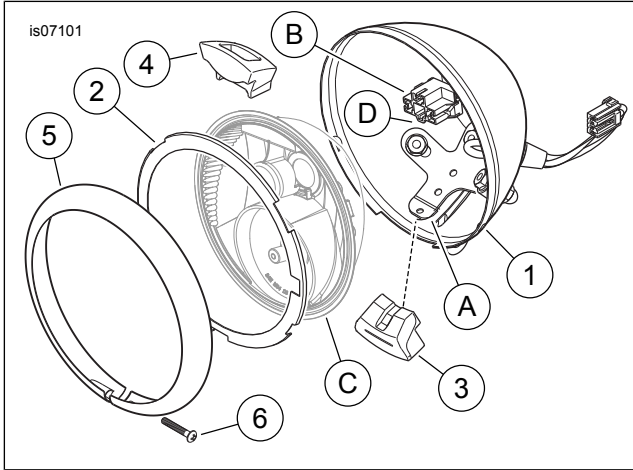


Figure 1. Service Parts, 5-3/4 Inch Headlamp Housing

Table 1. Service Parts

Item	Description (Quantity)	Part Number
1	Headlamp housing (black)	Not sold separately
2	Retainer ring	67769-93
3	Bumper, lower	Not sold separately
4	Bumper, upper	Not sold separately
5	Bezel (black)	69925-08
6	Screw, Phillips head, #8-32	Not sold separately
<b>Items mentioned in text, but not included in kit.</b>		
A	Leading edge of mounting bracket inside headlamp housing	
B	Connector inside headlamp housing	
C	LED headlamp	
D	Position of connector inside headlamp housing	