



# INSTRUCTIONS

-J03176

REV. 06-25-2004

Kit Number 67523-04 and 67524-04

## MINI-TACH HOUSING KIT

### General

These housing kits are to be used with a mini-tach bracket kit (sold separately) and a mini-tach kit (sold separately).

These housings fit the following mini-tach kits:

#### Kit Number

68953-04  
68986-04  
67201-04A  
68031-05

See the Service Parts illustration for kit contents.

### Installation

1. Verify that the wire harness from the mini-tach kit is routed through the grommet attached to the isolation gasket and the three lead ring terminals are connected to the mini-tach.
2. See the Service Parts illustration. Press the housing (1) into the isolation gasket while capturing the isolation gasket grommet in the housing cutout.
3. Install the flat head screw (2) and tighten to 20-30 **in-lbs** (2.2-3.4 Nm).
4. Check seal of the isolation gasket around the perimeter of the housing.

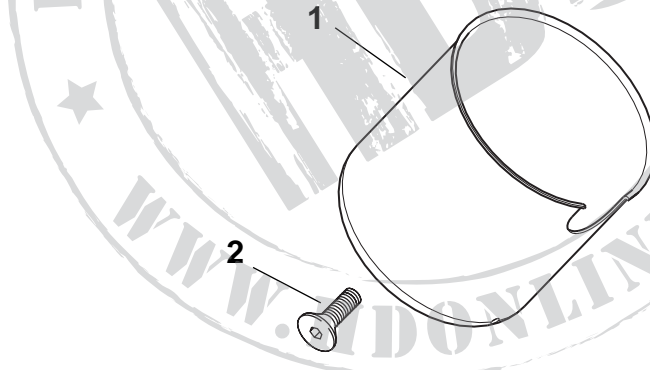


## Service Parts

Part Number 67523-04 & 67524-04 | Date 06/04

Mini-Tach Housing Kit

i06544



Item	Description	Part No.
1	Mini-Tach Can Tapered (Kit No. 67524-04) Cylindrical (Kit No. 67523-04)	67925-04 67953-96
2	Flat socket head screw	67956-96