



INSTRUCTIONS

-J04255

REV. 2006-10-13

ENGINE/TRANSMISSION INTERFACE AND TOP COVER

GENERAL

Kit Number

66532-07

Models

For model fitment information, please see the P&A Retail Catalog or the Parts and Accessories section of www.harley-davidson.com (English only).

Additional Parts Required

Loctite® 243 (Blue) Threadlocker and Sealant (H-D Part Number 99642-97) is required for the proper installation of this kit.

Kit Contents

See Figure 2 and Table 1.

INSTALLATION

WARNING

Perform this installation when the engine is cool. Working on or near the exhaust system when the engine is hot could result in severe burns. (00311a)

1. Refer to the Owner's Manual and follow the instructions given to remove the maxi-fuse.

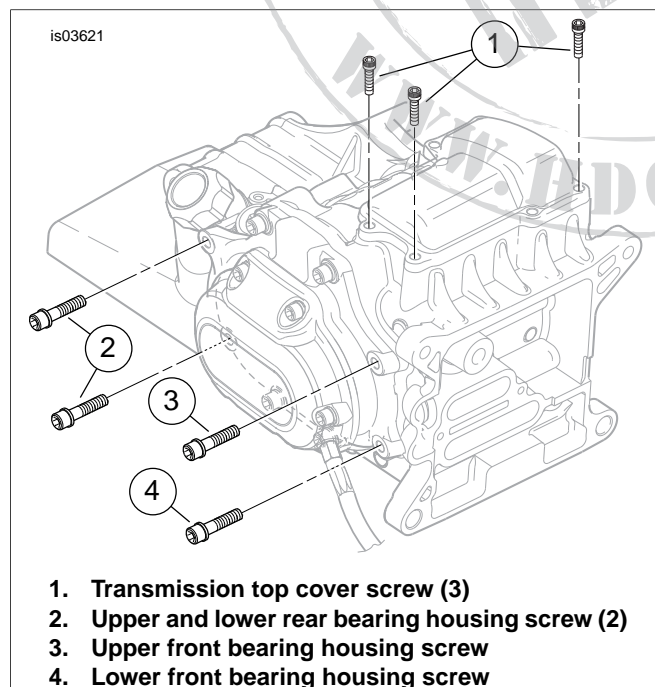


Figure 1. Interface Cover Installation

2. See Figure 1. Remove the two rear bearing housing screws (2) from the side of the transmission case.
3. Remove the oil level dipstick from the oil spout on the side of the transmission housing, wipe off and set it aside for later installation.

NOTE

Insert a clean shop rag into the oil spout opening while the dipstick is not installed. With the dipstick removed, small parts or other foreign material could fall into the transmission, leading to equipment damage or malfunction.

4. See Figure 2. Obtain the rear interface mounting bracket (1) from the kit.
5. Apply a few drops of Loctite 243 (Blue) to the threads of the two bearing housing screws removed in Step 2. Install the rear interface mounting bracket to the bearing housing with the screws, and tighten to 13-18 ft-lbs (17.6-24.4 Nm).
6. See Figure 1. Remove the upper front bearing housing screw (3) from the side of the transmission case. Loosen the lower front bearing housing screw (4).
7. See Figure 2. Obtain the front interface mounting bracket (2) from the kit.
8. Apply a few drops of Loctite 243 (Blue) to the threads of the upper front bearing housing screw removed in Step 6. Hook the slot in the front interface mounting bracket under the loosened lower screw head. Install the bracket to the bearing housing with the upper screw, and tighten both screws to 13-18 ft-lbs (17.6-24.4 Nm).
9. See Figure 1. Remove and retain the three socket head cap screws (1) that fasten the right side and left front corner of the transmission cover.
10. Remove and retain the screw fastening the rear brake line P-clamp to the rear fork bracket.
11. See Figure 2. Obtain the right rear interface cover (3), two chrome 1/4-20 screws (6) and two flat washers (7) from the kit.
12. From the rear of the motorcycle, bring the right rear interface cover into position behind the rear exhaust pipe, over the bearing housing. The hole in the top surface of the cover should be positioned over the right rear transmission top cover hole.
13. Loosely fasten the interface cover to the rear interface mounting bracket with the two chrome screws and flat washers.
14. Obtain the chrome top interface cover (4) from the kit.
15. Position the top interface cover over the transmission top cover, overlapping the tab at the top front of the chrome right rear interface cover.

Loosely fasten the top interface cover through the right rear interface cover to the top of the transmission housing with the three screws removed in Step 9.

16. Obtain the right front interface cover (5), two chrome 1/4-20 screws (6), two flat washers (7), the #10-24 socket head screw (8) and wave washer (9) from the kit.

NOTE

It may be necessary to loosen the lower front interface mounting bracket screw slightly in order to properly align the right front interface cover.

17. Position the right front interface cover to the vehicle, overlapping the tab at the front of the chrome top interface cover.

Loosely fasten the right front interface cover to the **front** interface mounting bracket with the two chrome 1/4-20 screws and flat washers.

Loosely fasten the right front interface cover to the **top** interface cover with the #10-24 socket head screw and wave washer

18. Align all three chrome interface covers for best appearance. Tighten the four 1/4-20 screws fastening the right-side covers to 80-100 **in-lbs** (9.0-11.3 Nm).
Tighten the #10-24 screw to 40-50 **in-lbs** (4.5-5.6 Nm).
19. One at a time, remove the transmission top cover screws loosely installed in Step 15. Apply a few drops of Loctite Blue to the screw threads and re-install. Tighten the screws to 84-132 **in-lbs** (9.5-14.9 Nm).
20. Install the rear brake line P-clamp to the rear fork bracket with the screw removed in Step 10. Tighten securely.
21. Remove the shop rag from the oil spout opening, and re-install the dipstick.
22. Refer to the Owner's Manual and follow the instructions given to install the maxi-fuse.



SERVICE PARTS

is03620

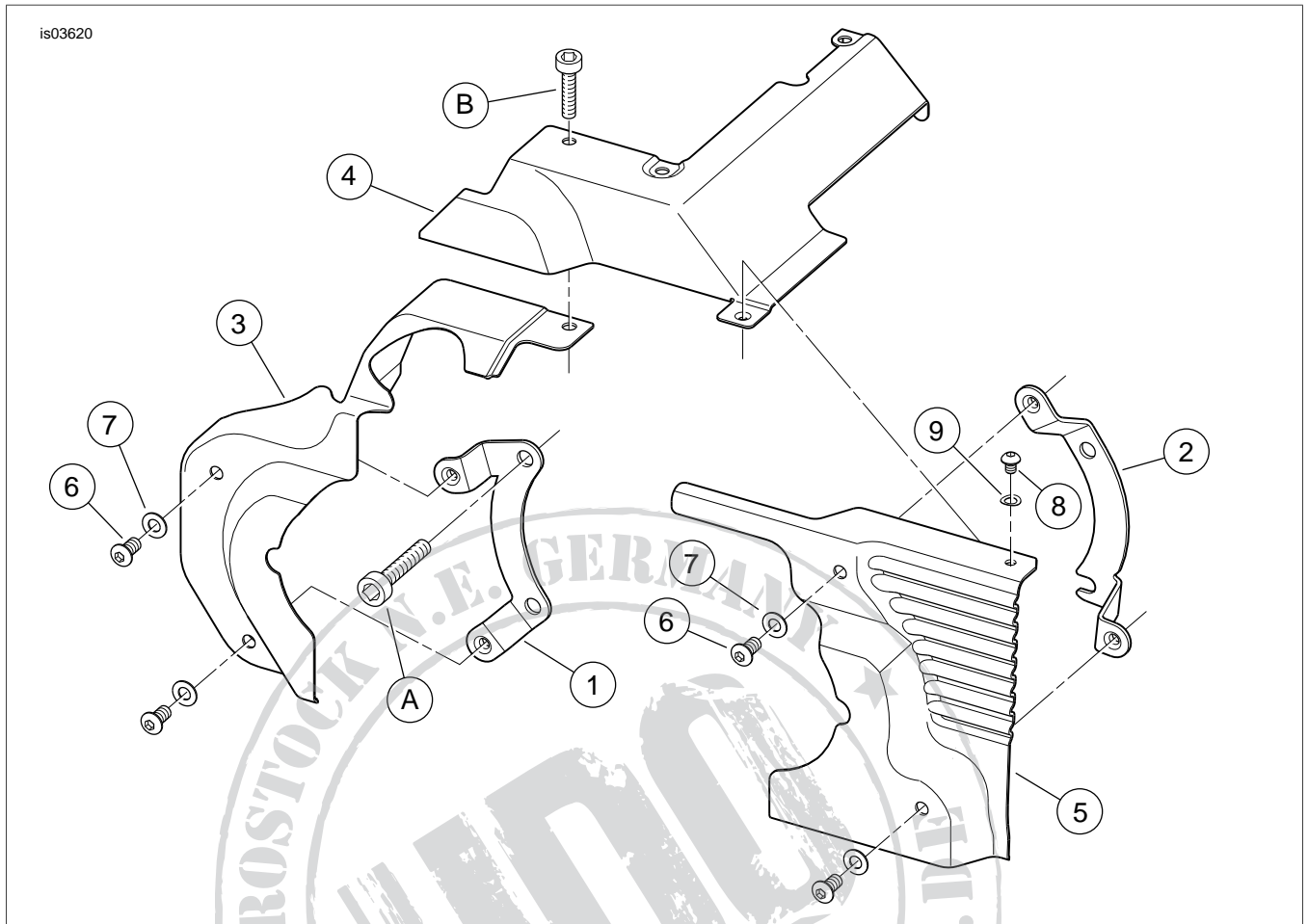


Figure 2. Service Parts: Interface Covers

Table 1. Service Parts Table

Item	Description (Quantity)	Part Number
1	Bracket, rear interface mounting	Not sold separately
2	Bracket, front interface mounting	Not sold separately
3	Cover, transmission interface (right rear)	Not sold separately
4	Cover, transmission interface (top)	Not sold separately
5	Cover, transmission interface (right front)	Not sold separately
6	Screw, socket head, 1/4-20 x 0.5 in., chrome (4)	94407-94T
7	Flat washer (4)	Not sold separately
8	Screw, hex socket head, #10-24 x 0.25 in., chrome	Not sold separately
9	Wave washer, stainless steel	62959-01
Items mentioned in text, but not included in kit:		
A	Original equipment upper bearing housing screw (4)	
B	Original equipment transmission top cover screw (3)	