



INSTRUCTIONS

-J04725

REV. 2009-08-07

TOURING STARTER COVER

GENERAL

Kit Number

66477-10

Models

For model fitment information, see the P&A Retail Catalog or the Parts and Accessories section of www.harley-davidson.com (English only).

Additional Parts Required

Loctite 243 Threadlocker and Sealant (blue) (P/N 99642-97).

⚠ WARNING

The rider's safety depends upon the correct installation of this kit. If the procedure is not within your capabilities or you do not have the correct tools, have a Harley-Davidson dealer perform the installation. Improper installation of this kit could result in death or serious injury. (00308a)

Kit Contents

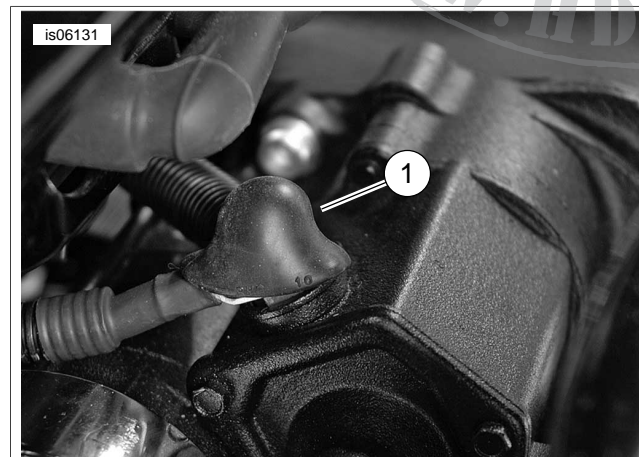
See Figure 4 and Table 1.

There are no Service Parts available with this kit.

INSTALLATION

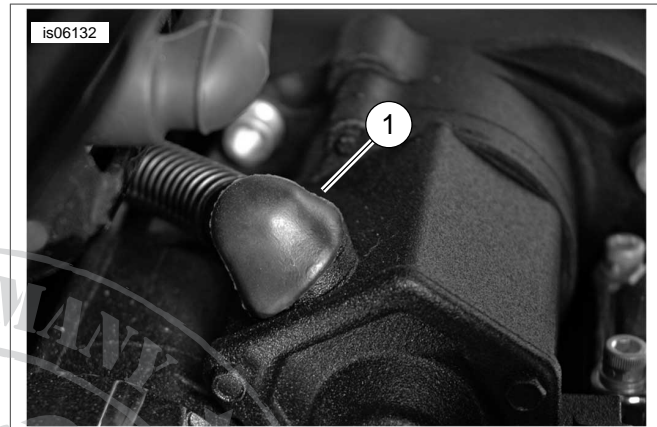
⚠ WARNING

To prevent accidental vehicle start-up, which could cause death or serious injury, disconnect negative (-) battery cable before proceeding. (00048a)



1. Boot

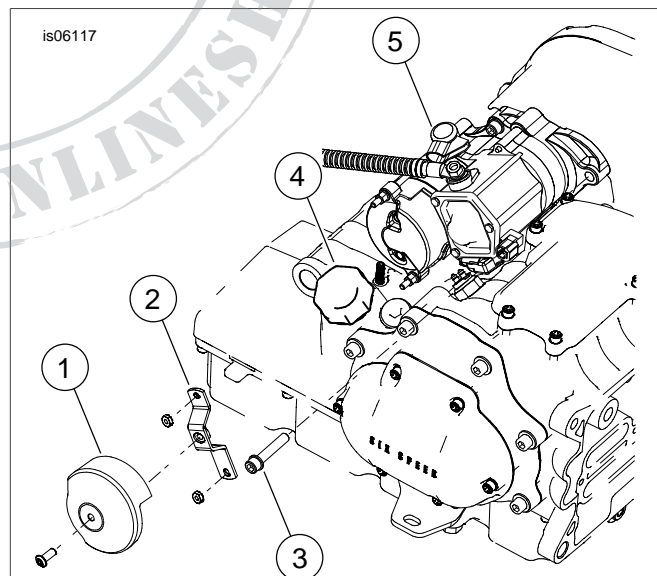
Figure 1. Tri-Glide Positive Cable At Starter With Boot



1. Boot

Figure 2. Touring Positive Cable At Starter With Boot

1. Disconnect the battery cables, negative cable first.
2. Disconnect spark plug wires at the coil
3. See Figure 1 and Figure 2. Verify that the positive battery cable rubber boot at the starter terminal is in place and in good condition. Verify that the cable is routed correctly.
4. See Figure 3. Remove starter motor end cover (1) and cover mounting bracket (2). Save nuts.



1. Starter motor end cover
2. Cover mounting bracket
3. Starter assembly forward screw
4. Dipstick
5. Battery cable rubber boot cover

Figure 3. Remove Components

5. Remove starter assembly forward screw. Save screw (3).
6. Remove dipstick (4).
7. See Figure 4 and Table 1. Mount the new cover mounting bracket (2) with the nuts (A) removed in Step 1. Position the bracket in the center of its slotted holes. Tighten nuts to 40-60 **in-lbs** (4.5-6.8 Nm).
8. Position the starter cover (1) over the starter/solenoid assembly.
9. Fasten the left side of the cover using the washer (4) and the forward screw (B), previously removed in Step 5. Apply Loctite 243 threadlocker and sealant (blue) to screw and and tighten screw to 25-27 ft-lbs (33.9-36.6 Nm).
10. Mount the right side of the cover to the bracket previously installed using screws (3). If the cover and bracket holes

are misaligned, remove the cover and adjust the mounting bracket up or down as required. Tighten screws to 50-70 **in-lbs** (5.7-7.9 Nm).

11. Remove the adhesive backing from the dual lock strip on the inside of the starter cover end trim (5). Position the small pry notch in the end trim at approximately the 7:30 o'clock position and snap the trim into the starter cover. Press firmly on the center of the end trim to adhere the dual lock strip to the cover.
12. Install dipstick.
13. Connect spark plug wires.
14. Connect the battery cables, positive cable first.

SERVICE PARTS

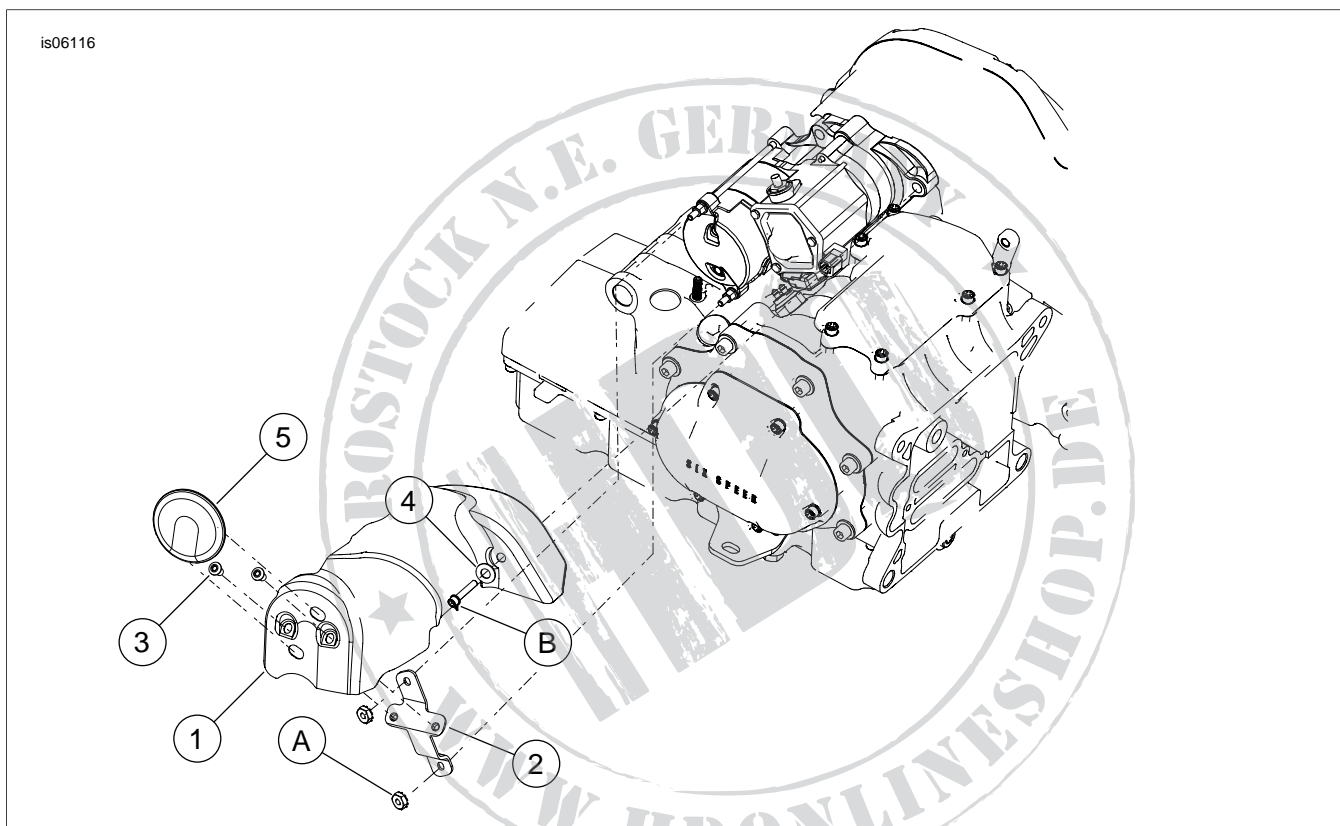


Figure 4. Service Parts: Touring Starter Cover

Table 1. Service Parts Table

| Item | Description (Quantity) | Part Number |
|--|---|---------------------|
| 1 | Starter cover | Not Sold Separately |
| 2 | Cover mounting bracket | Not Sold Separately |
| 3 | Screws, buttonhead, 1/4-20 x 0.50 in. (2) | Not Sold Separately |
| 4 | Washer, 0.34 I.D. x 0.369 O.D. x 0.45 thick | Not Sold Separately |
| 5 | Starter cover end trim | Not Sold Separately |
| Items mentioned in text, but not included in kit: | | |
| A | Nut (2) | |
| B | Screw | |