



INSTRUCTIONS

-J02150

REV. 10-9-01

Kit Number 66021-00

FXSTD TRIPLE-TREE COVER KIT

General

This kit fits all 2000 and later FXSTD models.

See the Service Parts illustration for a list of items contained in this kit.

NOTE

A Service Manual for your model motorcycle is available from your Harley Davidson Dealer.

Installation

1. See Figure 1. Support the headlight. Remove the screw and washer fastening the headlight to the triple tree on the front fork.
2. Remove the screw and washer fastening the brakeline P-clip to the underside of the triple tree. Keep the washer for installation.

CAUTION

Do not force the brake line during triple-tree cover installation. Forcing the brake line may kink the brake-line, causing brake failure, which may result in death or serious injury.

3. Temporarily loosen other local brakeline retainers to allow brakeline movement during triple-tree cover installation.
4. Align the spacer (4) with the 1/4-in. screw hole inside the cover (1). Use an adhesive or tape to help maintain the spacer position during installation.
5. See the Service Parts illustration. Place the triple-tree cover (1) in position on the underside of the triple tree.
6. Loosely fasten the P-clip and the back of the triple-tree cover to the triple tree using the washer from step 2 and the 1/4 x 5/8-in. screw (3) provided in this kit.

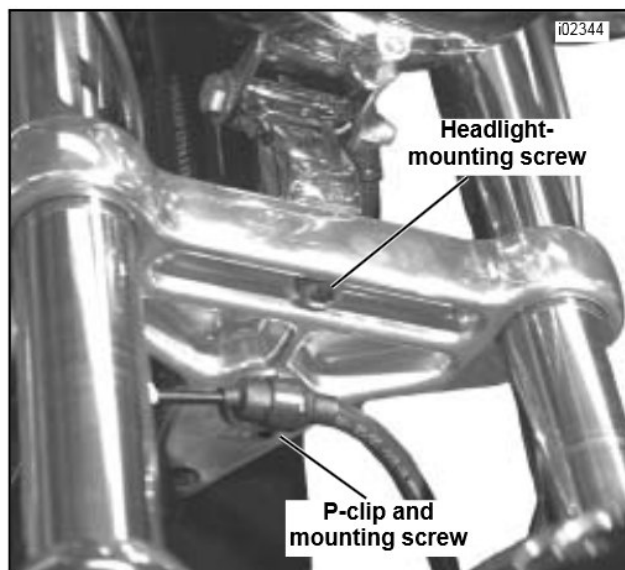


Figure 1. Preparing to Install the FXSTD Triple-Tree Cover

7. Loosely fasten the front of the triple-tree cover to the triple tree and headlight mount using the washer (2) and the 3/8 x 2-in. screw (3) provided in this kit.
8. Align the headlight. Torque the 3/8-in. screw to 30 – 35 ft-lbs (40.7 – 47.5 Nm). Torque the 1/4-in. screw to 8 – 10 ft-lbs (10.8 – 13.6 Nm).
9. Tighten the brakeline retainers loosened in step 3.

CAUTION

Do not over-tighten the triple-tree cover fasteners. Applying too much torque to the fasteners may damage the triple-tree cover.



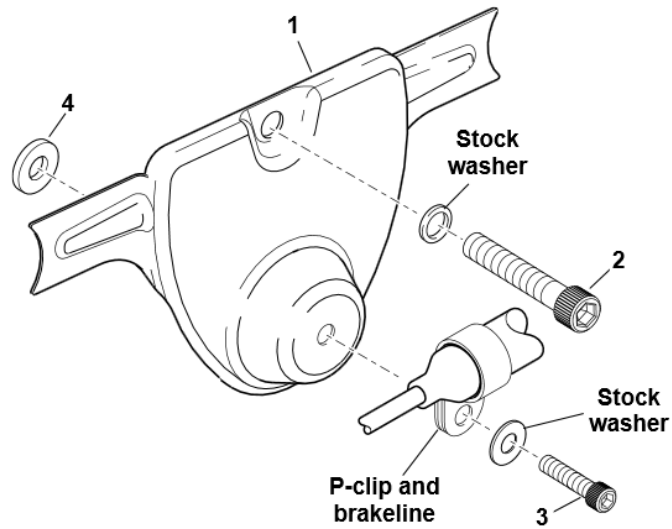
Service Parts

Part No. 66021-00

Date 10/01

Triple Tree Cover Kit

i02357a



Item	Description	Part No.
1	Triple-tree cover	Not sold separately
2	3/8 x 2-in. screw	94358-91T
3	1/4 x 5/8-in. screw	94311-91T
4	Spacer	Not sold separately