



# INSTRUCTIONS

-J02925

REV. 2006-11-30

## VRSC CHROME BILLET MUFFLER CLAMPS

### GENERAL

#### Kit Number

65271-03

#### Models

For model fitment information, please see the P&A Retail Catalog or the Parts and Accessories section of [www.harley-davidson.com](http://www.harley-davidson.com) (English only).

#### Kit Contents

#### NOTE

This kit does not fit 16 Ga. Double Barrel Exhaust, Harley Davidson Part Number 64798-02.

Table 1. Kit Contents

Description (Quantity)	Part Number
Chrome billet exhaust clamp (2)	Not Sold Separately
Hex head clamp screw (2)	Not Sold Separately
Washer (2)	Not Sold Separately

There are no Service Parts available with this kit.

### REMOVAL

#### WARNING

Perform this installation when the engine is cool. Working on or near the exhaust system when the engine is hot could result in severe burns. (00311a)

#### WARNING

To prevent accidental vehicle start-up, which could cause death or serious injury, remove maxi-fuse before proceeding. (00251a)

1. Remove and retain right side cover and maxi-fuse.
2. See Figure 1. Loosen upper (2) and lower (4) muffler clamps.
3. Remove and retain two fasteners holding upper muffler to lower muffler.
4. Slide upper muffler rearward and away from auxiliary volume (3) to disconnect.
5. Remove and retain lower muffler fastener (5) and washer (6).
6. Slide lower muffler rearward and away from auxiliary volume to disconnect.

7. Remove upper (2) and lower (4) muffler clamps from exhaust system.

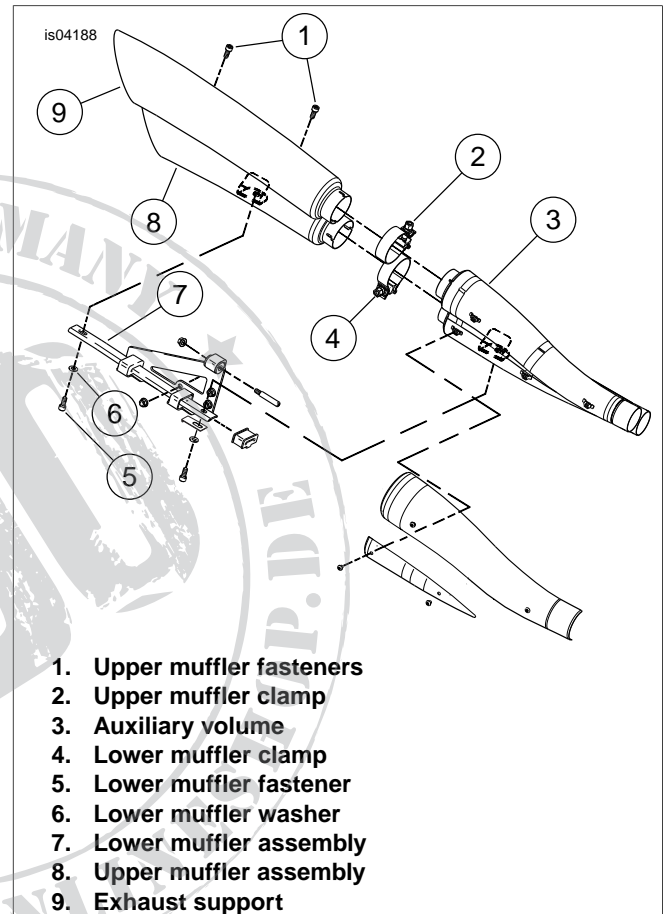


Figure 1. Exhaust System Components

### INSTALLATION

#### CAUTION

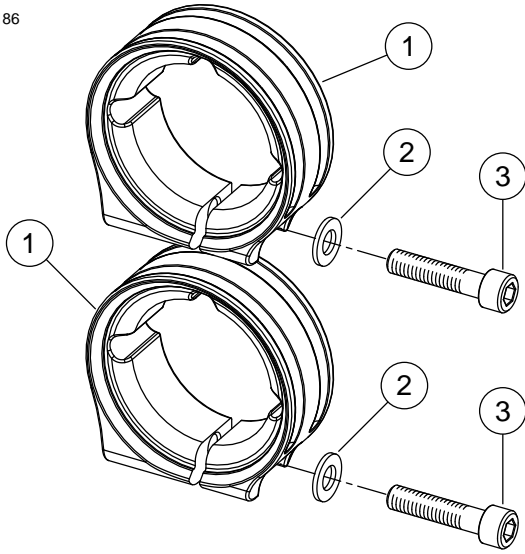
Wipe all fingerprints off of exhaust system components after installation and before starting engine. Oil from hands can leave permanent marks on exhaust system finish. (00346a)

#### NOTE

Do not tighten fasteners until required to do so. First align upper and lower muffler assembly and install all necessary fasteners. Next, finger tighten all fasteners before final tightening to ensure proper fit of system components.

1. See Figure 2. Install chrome billet muffler clamps (1) onto mufflers with beveled surface facing mufflers and screw bulkheads at bottom.

is04186



- 1. Chrome billet muffer clamps
- 2. Washers
- 3. Screws

Figure 2. Installation Configuration of Clamps (beveled edge must face mufflers)

2. Slide lower muffler onto lower pipe of auxiliary volume and install lower muffler fastener and washer into exhaust support. Finger tighten.
3. Slide upper muffler onto upper pipe of auxiliary volume and install upper muffler fasteners into lower muffler. Finger tighten.
4. Tighten fasteners in the following order:
  - a. Upper and lower chrome billet muffler clamps - 65 Nm (48 ft-lbs).
  - b. Lower muffler fastener to exhaust support - 23 Nm (17 ft-lbs).
  - c. Upper muffler fasteners - 23 Nm (17 ft-lbs).
5. Install maxi-fuse and side cover.

