



# INSTRUCTIONS

-J01618

REV. 2007-11-20

## LEFT SIDE TOOL BOX KIT

### GENERAL

#### Kit Number

64938-00

#### Models

For model fitment information, please see the P&A Retail Catalog or the Parts and Accessories section of [www.harley-davidson.com](http://www.harley-davidson.com) (English only).

#### Additional Parts Required

For FLSTF, FXST, FXSTB, and FXSTS models with passenger footpegs, a footpeg extension kit, Part Number 49352-00 must also be purchased. This kit is not required if the tool box is installed with passenger footboard kits, Part Number 50955-00 or 50602-00.

#### NOTE

A Service Manual for your model motorcycle is available from a Harley-Davidson Dealer.

#### Kit Contents

See Figure 1 and Table 1.

### INSTALLATION

#### NOTE

While handling and installing tool box, be careful not to scratch surface.

- See Figure 1. Attach the toolbox (4) to the toolbox mounting bracket (1) using the three pan head screws (2) and Nylock nuts (3) from the kit.
- Remove the two button head screws (I) which secure left rear fender support (B) to motorcycle frame (C). Retain screws for reassembly.
- On models with passenger footpegs:**
  - For FLSTN models:** Remove button head screw (N) and left footrest bracket (O) with attached footrest support (F) and footrest (E).
  - For all other models:** Remove the locknut (G), hex head bolt (J), spring washer (H) and footpeg (E). Remove the socket head cap screw (K) that secures the footrest support (F) to the frame (C).
  - Remove the two bolts, nuts and washers which secure the bottom of the splash guard to the swingarm. This will allow you to move splash guard when installing the new passenger footrest bolt.
  - Retain all removed components.

#### 4. On models with passenger footboards:

- Remove the screw securing the passenger footboard assembly to the frame. Remove the footboard assembly.
- Retain all removed components.

- Slide the top of mounting bracket (1) between rear fender support (B) and frame (C). Align top holes in bracket with fender support holes. Align lower bracket hole with footrest mounting hole in frame. Install the two screws (I), removed in Step 2, in fender support. Do not tighten screws at this time.

### WARNING

Footrests must fold up and toward rear of motorcycle if struck. Failure to set footrests to fold up and back could result in death or serious injury. (00366a)

#### 6. On models with passenger footpegs:

- For FLSTN models:** Install button head screw (N) and left footrest bracket (O) with attached footrest support (F) and footrest (E) on top of the toolbox bracket (1). Tighten screw to 35-45 ft-lbs (47.5-61.0 Nm).
- For all other models:** Refer to instructions in footpeg extension kit, Part Number 49352-00 for installation, and install the extension kit, footrest support and footpeg on top of the toolbox bracket (1).
- Install the two bolts, nuts and washers and secure the bottom of the splash guard to the swingarm.

#### 7. On models with passenger footboards:

- Position footboard assembly, in the same orientation as removed, on top of tool box bracket.
- Install screw removed in Step 4. Tighten to 35-45 ft-lbs (47.5-61.0 Nm).

#### NOTE

If the vehicle is equipped with original equipment Heritage Style saddlebags, install saddlebag relocation bracket kit, Part Number 90238-00.

- Tighten the fender support button head screws, from Step 2 to 21-27 ft-lbs (28.5-36.6 Nm).
- Discard remaining original and kit mounting hardware.

# SERVICE PARTS

is04010

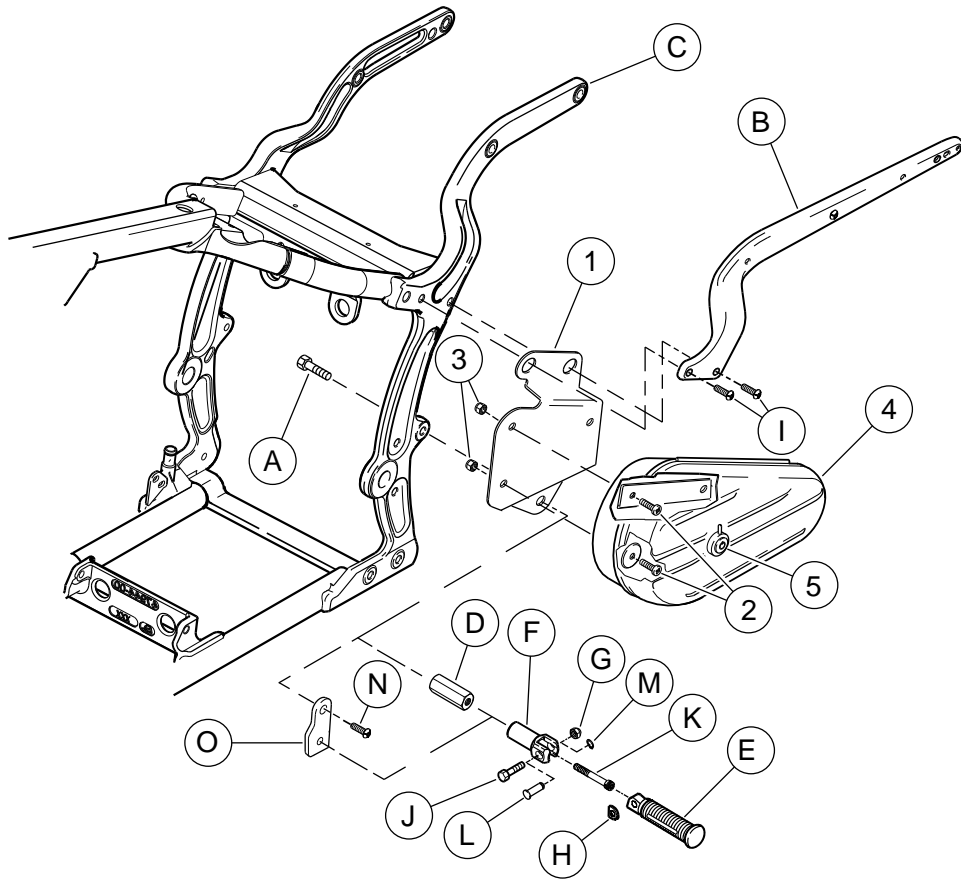


Figure 1. Service Parts: Left Side Tool Box Kit

Table 1. Service Parts Table

Item	Description (Quantity)	Part Number
1	Bracket, toolbox mounting	64939-00
2	Screw, pan head (3)	2774
3	Nut, hex Nylock (3)	7686
4	Toolbox	64206-89A
5	Lock, toolbox	45797-99
6	Key (2), (not Shown)	64204-96



**Table 1. Service Parts Table**

Item	Description (Quantity)	Part Number
<b>Items mentioned in text, but not included in kit:</b>		
A	Screw	
B	Fender support	
C	Frame	
D	Extension, footrest (from kit 49352-00)	
E	Footrest	
F	Footrest support	
G	Locknut	
H	Spring washer	
I	Screw (2)	
J	Screw	
K	Screw	
L	Clevis pin (FLSTN)	
M	Retaining ring (FLSTN)	
N	Bracket screw (FLSTN)	
O	Footrest bracket (FLSTN)	

