



INSTRUCTIONS

-J01617

REV. 2007-07-16

RIGHT SIDE TOOL BOX KIT

GENERAL

Kit Number

64937-00A

Models

This kit fits on all 2000 and later FXST, FXSTB, FXSTS, FLSTC, FLSTS, and FLSTN models motorcycles.

Additional Parts Required

When installing this kit on FXST, FXSTB, FXSTS, and FLSTS models with passenger footpegs, an additional footpeg extension kit (49352-00) must be purchased. This kit is not required if the tool box is installed on models with passenger footboard kits (50955-00 or 50602-00).

When installing this kit on FLSTC and FLSTS models equipped with factory installed leather saddlebags and on other Softail models equipped with Heritage Style Saddlebag Kits, a Bracket Relocation Kit (90238-00) will be required. The relocation kit must be purchased separately from your Harley-Davidson dealer.

To install this kit on FLSTC model Softail motorcycles, an additional footpeg extension kit (49352-00) and a saddlebag relocation kit (90238-00) must be purchased.

NOTE

Lock mechanism accepts all Harley-Davidson barrel style ignition keys.

Kit Contents

See Figure 1 and Table 1.

INSTALLATION

NOTE

Be careful not to scratch toolbox surface while performing this installation.

- See Figure 1. Attach the toolbox (5) to the toolbox mounting bracket (1) using three pan head screws (2) and Nylock nuts (3).
- Remove the two button head screws (J) which secure right rear fender support (B) to the frame (D). Retain screws for reassembly.
- For FLSTN models with passenger footpegs:**
 - Remove retaining ring (N), clevis pin (O), spring washer (I) and footrest (F).
 - Remove the socket head screw (C) that secures the footrest support (G) to the frame (D).
 - Remove two socket head screws (K) from the exhaust support (L).

For all other models with passenger footpegs:

- Remove the locknut (H), screw (M), spring washer (I) and footrest (F).
- Remove screw (A or C) that secures the footrest support (G) to the frame (D).
- Remove the two bolts, nuts and washers which secure the bottom of the splash guard to the swingarm. This will allow you to move splash guard when installing the new passenger footrest bolt.
- Retain all removed components.

For models with passenger footboards:

- Remove the screw that secures the passenger footboard assembly to the frame. Remove the footboard assembly.
 - Retain all removed components.
- Slide top of toolbox bracket (1) between rear fender support (B) and frame (D). Align top holes in bracket with fender support holes. Align lower bracket hole with footrest mounting hole in frame. Install the two screws (J), which were removed in Step 2, in fender support (B). Do not tighten screws at this time.

WARNING

Footrests must fold up and toward rear of motorcycle if struck. Failure to set footrests to fold up and back could result in death or serious injury. (00366a)

5. For FLSTN models with passenger footpegs:

- Using two washers (4) from the kit, between the frame and exhaust support, loosely install the two socket head screws (K).
- Install the footrest support on top of the toolbox bracket using the socket head screw (C).
- Tighten screws (C and K) to 35-45 ft-lbs (47.8-61.0 Nm).
- Install footpeg (F) and spring washer (I) using the clevis pin (O) and retaining ring (N).

For all other models with passenger footpegs:

- For all other models:** Refer to instructions in footpeg extension kit (49352-00) for installation, and install the extension kit, footrest support and footpeg on top of the toolbox bracket (1).
- Install the two bolts, nuts and washers from Step 3 and secure the bottom of the splash guard to the swingarm.

For models with passenger footboards:

- a. Position footboard assembly, in the same orientation as removed, on top of tool box bracket.
- b. Install screw removed in Step 3 and tighten to 35-45 ft.lbs. (47.5-61.0 Nm)

NOTE

If the vehicle is equipped with original equipment Heritage Style saddlebags, install saddlebag relocation bracket kit (90238-00).

6. Tighten the fender support button head screws, from Step 2 to 21-27 ft. lbs. (28.5-36.6 Nm).

SERVICE PARTS

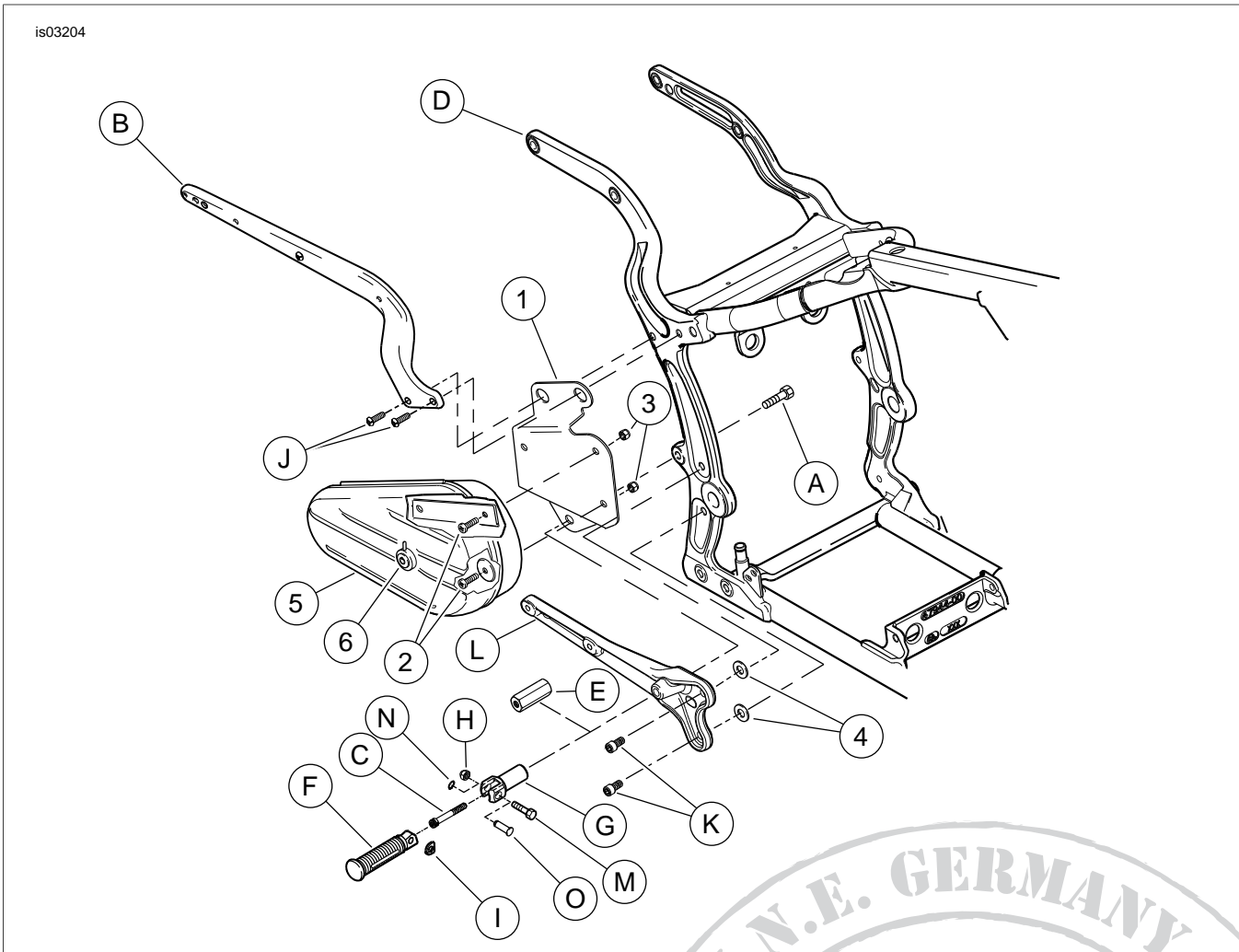


Figure 1. Service Parts: Right Side Tool Box Kit

Table 1. Service Parts Table

Item	Description (Quantity)	Part Number
1	Bracket, toolbox mounting	64265-00
2	Screw, pan head (3)	2774
3	Nut, hex Nylock (3)	7686
4	Washer (2)	6416
5	Toolbox	64203-85A
6	Lock	45797-99
7	Key (2), (not shown)	64204-96

Table 1. Service Parts Table

Item	Description (Quantity)	Part Number
Items mentioned in text, but not included in kit:		
A	Screw	
B	Fender support	
C	Screw, socket head	
D	Frame	
E	Extension, footrest (from kit 49353-00)	
F	Footrest	
G	Footrest support	
H	Locknut	
I	Spring washer	
J	Screw (2)	
K	Screw (2)	
L	Exhaust support (FLSTN only)	
M	Screw	
N	Retaining ring (FLSTN)	
O	Clevis pin (FLSTN)	

