



INSTRUCTIONS

-J03253

REV. 2005-01-14

CHROME HANDLEBAR RISER HARDWARE KIT

GENERAL

Kit Number

This instruction sheet applies to kit number 63026-05.

Models

This kit fits all 1997 and later FXST (Softail Standard), FXSTB (Night Train), FXSTC (Softail Custom) and FXSTD (Softail Deuce), all 1993 through 2000 FXR and all 1991 and later Dyna model motorcycles.

This kit is a direct replacement for the original equipment (OE) handlebar riser hardware.

Kit Contents

This kit contains the following items (see Table 1):

Table 1. Kit Components

Description (Quantity)	Part Number
Screw, socket head, chrome (2)	Not sold separately
Washer, decorative, chrome (2)	Not sold separately

INSTALLATION

1. See Figure 1. Remove and discard one of the hex head bolts and split lockwashers (not shown) that fasten the handlebar risers (6) to the upper fork bracket (5).

NOTES

Retain any additional components that may have become dislodged from the riser when the bolt was removed. Refer to the illustration for correct orientation and re-assembly sequence.

On one riser only, a ground cable (3) and an internal-toothed lockwasher (4) are installed to the underside of the upper fork bracket. The lockwasher **must** be installed into the counterbore of the chrome decorative washer (2) **before** the ground cable is assembled to the screw (1).

The ground cable **terminal** must be installed with the wire side **down** (toward the lockwasher). See Figure 1 inset.

The chrome decorative washers are slotted to allow clearance for the ground cable. Align the slot with the ground terminal and wire before tightening the screw.

2. Slide a **new** chrome decorative washer (2) onto the threads of a **new** chrome socket-head cap screw (1) from

the kit, followed by any of the original equipment components that came loose during disassembly. Apply a few drops of Loctite 271 (red) to the threads of the screw. Thread the bolt through the upper fork bracket into the riser.

3. Torque the screw to 30-40 ft-lbs (40.7-94.9 Nm).
4. Repeat Steps 1, 2 and 3 for the remaining cap screw and decorative washer.

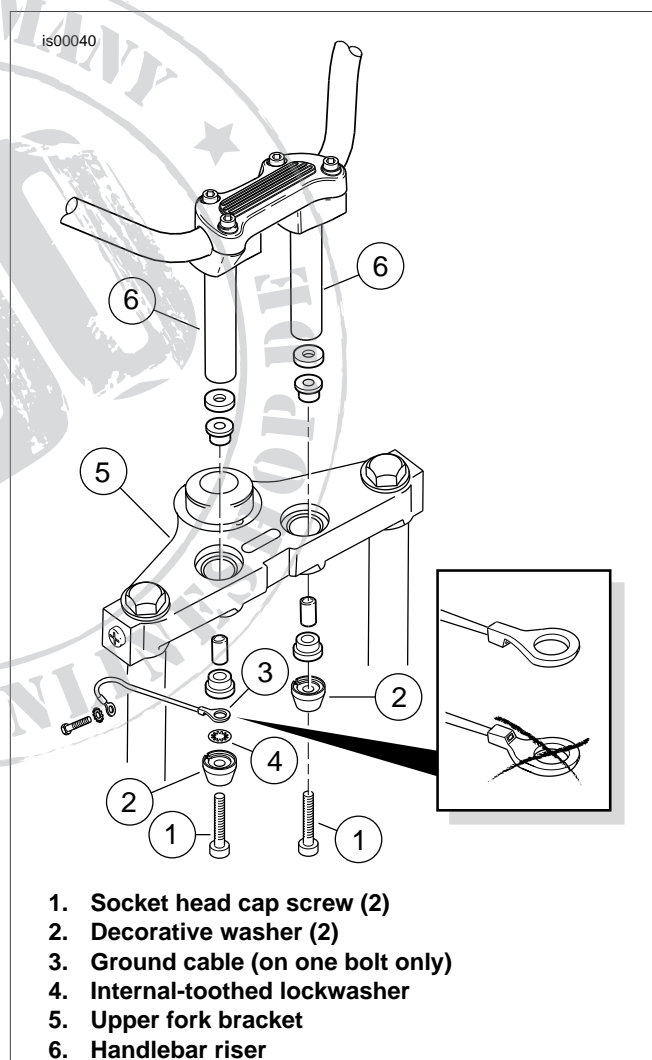


Figure 1. Handlebar Clamp Hardware (FXSTB/I Shown)