



INSTRUCTIONS

-J05752

2014-02-17

INNER FAIRING TRIM KIT

GENERAL

Kit Number

61400199

Models

For model fitment information, see the P&A retail catalog or the Parts and Accessories section of www.harley-davidson.com (English only).

Kit Contents

See Figure 3 and Table 1.

PREPARATION

⚠ WARNING

To prevent accidental vehicle start-up, which could cause death or serious injury, remove main fuse before proceeding. (00251b)

NOTE

- For vehicles equipped with security siren: With security fob present, turn ignition switch ON. After system is disarmed, turn ignition switch OFF. **IMMEDIATELY** remove the main fuse per the owner's manual.
- For vehicles **WITHOUT** security siren: See the owner's manual to remove the main fuse.

INSTALLATION

NOTE

- Make sure that ambient temperature is between 21 °C (70 °F) and 38 °C (100 °F) for proper adhesion. Do not install below 10 °C (50 °F).
- Allow **AT LEAST 24 hours** after application before exposing the area to vigorous washing, strong water spray or extreme weather.
- The adhesive bond will increase to maximum strength after about 72 hours at normal room temperature.

Install Radio Trim

1. See Figure 3. With the protective tape still in place on the adhesive backing, test fit the radio trim (1) to the radio bezel.

NOTE

Failure to follow knob removal and installation procedures can result in misalignment requiring dealer service.

2. If the trim slips easily behind the ignition switch knob, proceed to Step 4.

3. If the trim **DOES NOT** slip easily behind the ignition switch knob, remove the ignition switch knob before installing the radio trim. To remove the ignition switch knob:
 - a. Insert the ignition switch key and turn to the UNLOCK position. Leave the key installed.
 - b. See Figure 1. Rotate knob to FORK LOCK.
 - c. Press and hold the release button at the bottom left side of the knob. Turn the key 60 degrees counterclockwise.
 - d. Lift knob to remove. A spring drops out of the bore on the underside when removed. Retain for reassembly.
 - e. **DO NOT** rotate the switch to other positions while knob is removed.

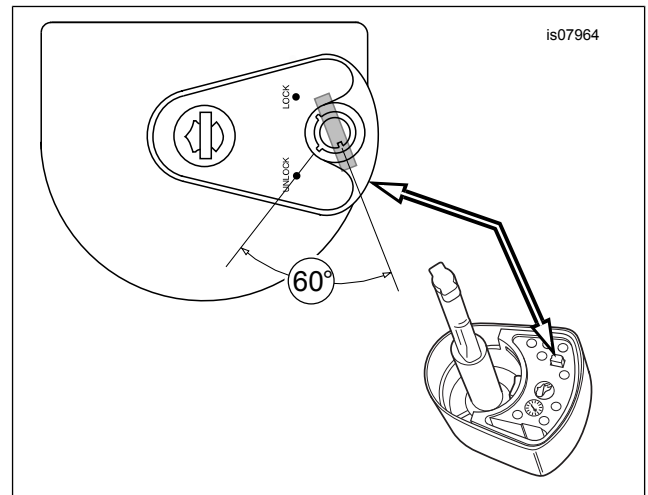


Figure 1. Ignition Switch Knob Release Button (Top and Bottom Views)

4. Clean the radio bezel mounting surface with a mixture of 50 percent isopropyl alcohol and 50 percent distilled water. Allow to dry completely.
5. Remove the protective tape. Install the trim to the radio bezel.
6. Press firmly with a sliding pressure to make sure that there is good adhesion.
7. If the ignition switch knob was removed: Install the ignition switch knob.
 - a. Place the spring (saved earlier) into the bore on the underside of the knob.



- b. See Figure 1. Verify that the button at the bottom of the knob is pressed, and key is turned 60 degrees counterclockwise from the UNLOCK position.
- c. With the knob pointing toward the FORK LOCK position, insert the shaft into the ignition switch.
- d. Hold the knob down. Turn the key clockwise to the UNLOCK position. An audible "click" is heard when knob and switch are properly engaged.
- e. Release the knob. Rotate through all four switch positions to verify proper operation. If knob does not install properly, contact a Harley-Davidson dealer.

Install Speaker Grille Trim

1. Gently brush or vacuum speaker grilles to remove any dust or dirt particles.
2. Cut eight 25 mm (1 in) long strips of narrow masking tape.
3. See Figure 2. With the protective tape still in place on the adhesive backing, position the speaker grille trim (2) against the speaker grille.
4. Rotate the trim ring into the desired position. Hold in place.
5. Apply four masking tape strips (1) directly to the speaker grille, above and below the trim ring cross-bar on both sides of the center Bar & Shield logo. These strips serve as an installation guide.
6. Remove the protective tape from the trim ring adhesive backing.
7. Align the trim ring with the masking tape guide strips. Press firmly into place against the speaker grille.
8. Remove the masking tape strips.
9. Repeat steps 3-8 for the remaining speaker.
10. Allow adhesive to cure for 24 hours before operating the motorcycle.

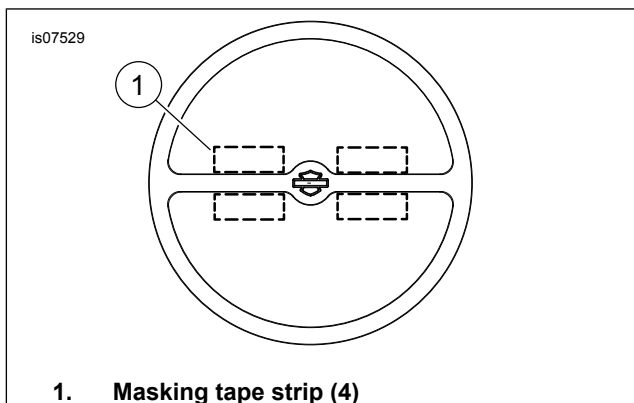


Figure 2. Speaker Grille

Install Gauge Trim

NOTICE

Do not clean with denatured alcohol, mineral spirits, or other solvent products, or component damage may occur. (00411c)

1. Clean the recessed inner fairing surface with a mixture of 50 percent isopropyl alcohol and 50 percent distilled water. Allow to dry completely.
2. See Figure 3. With the protective tape still in place on the adhesive backing, test fit the faceplate (4) to the inner fairing.

NOTE

The faceplate cannot be repositioned after initial installation.

3. Remove the protective tape. Install the faceplate to the inner fairing.
4. Press firmly with a sliding pressure to make sure that there is good adhesion.
5. Clean the faceplate openings with a mixture of 50 percent isopropyl alcohol and 50 percent distilled water. Allow to dry completely.

NOTE

There is an alignment tab on each trim ring (Items 5-8) and an alignment notch (A) on each faceplate (4) opening. Mark the tab and notch locations to ease alignment and installation.

6. With the protective tape still in place on the adhesive backing, test fit one trim ring to the faceplate.
7. Hold the trim ring in position. Apply a small piece of masking tape to the **trim ring** flange face (B) at the faceplate.
8. Apply a second piece of masking tape to the **faceplate** next to the trim ring masking tape.
9. Draw a reference mark across both pieces of tape.
10. Install the trim ring.
 - a. Remove the protective tape.
 - b. Align the masking tape reference marks. Install the trim ring to the faceplate.
 - c. Press firmly with a sliding pressure to make sure that there is good adhesion.
 - d. Remove the masking tape.

11. Repeat Steps 6-10 for the remaining trim rings.

COMPLETION

NOTE

To prevent possible damage to the sound system, verify that the ignition switch is OFF before installing the main fuse.

1. See the owner's manual to install the main fuse.

Kit Contents

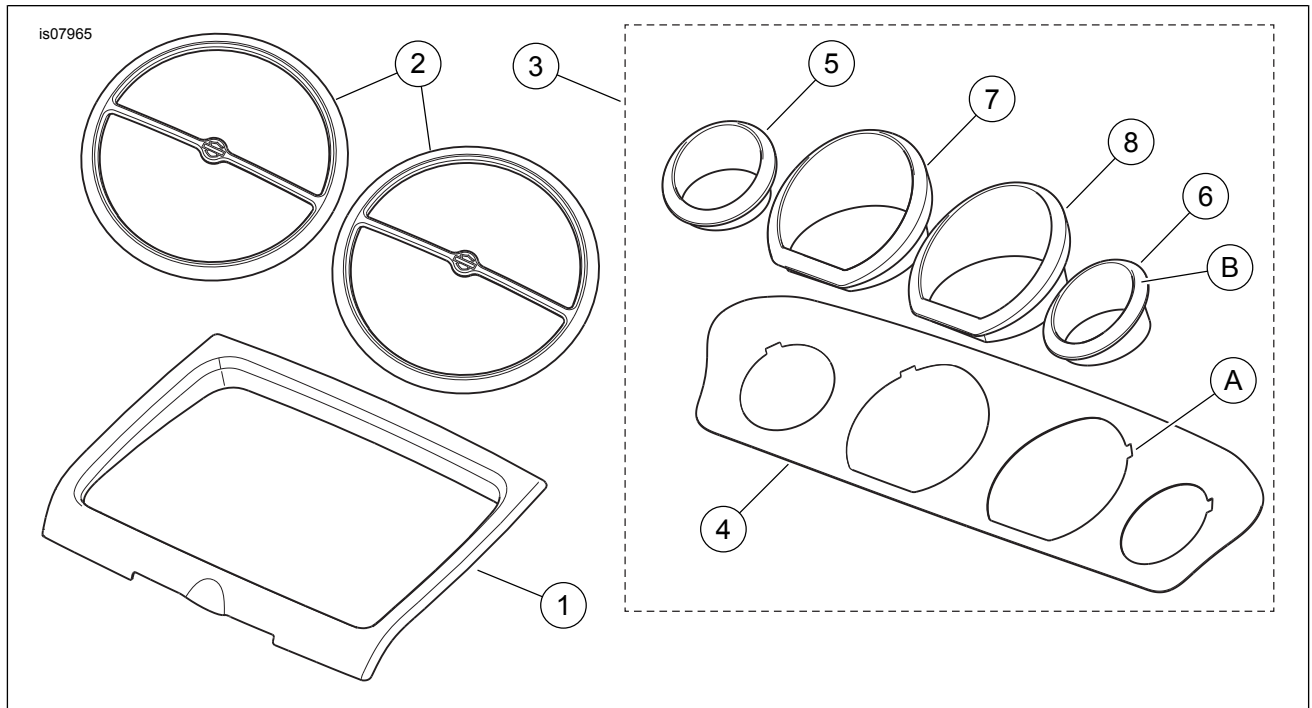


Figure 3. Service Parts, Inner Fairing Trim Kit

Table 1. Service Parts Table

Item	Description (Quantity)	Part Number
1	Radio trim	61400201
2	Speaker grille trim kit (contains 2 trims)	61400197
3	Gauge trim kit (includes Items 4-8)	61400200
4	• Faceplate (gauge trim carrier)	Not sold separately
5	• Gauge ring, 51 mm (2 in) (left)	Not sold separately
6	• Gauge ring, 51 mm (2 in) (right)	Not sold separately
7	• Gauge ring, 102 mm (4 in) (left)	Not sold separately
8	• Gauge ring, 102 mm (4 in) (right)	Not sold separately
Items mentioned in text, but not included in kit:		
A	Alignment notch (4)	
B	Trim ring flange face	