



# INSTRUCTIONS

-J05963

2017-01-16

## HORN COVER KIT

### GENERAL

#### Kit Number

61300452, 68189-07A, 69039-09A, 69166-01B, 69167-02B, 61300621, 61300622, 61300623

#### Models

For model fitment information, see the P&A Retail Catalog or the Parts and Accessories section of [www.harley-davidson.com](http://www.harley-davidson.com) (English only).

### ELECTRICAL OVERLOAD

#### ⚠ WARNING

When installing any electrical accessory, be certain not to exceed the maximum amperage rating of the fuse or circuit breaker protecting the affected circuit being modified. Exceeding the maximum amperage can lead to electrical failures, which could result in death or serious injury. (00310a)

### Additional Requirements

Separate purchase of LOCTITE® 271 MEDIUM STRENGTH THREADLOCKER AND SEALANT (Red) (part no. 99671-97) or equivalent is required for proper installation of this kit.

### Kit Contents

See Figure 1 and Table 1.

### REMOVAL

#### ⚠ WARNING

To prevent accidental vehicle start-up, which could cause death or serious injury, disconnect negative (-) battery cable before proceeding. (00048a)

#### ⚠ WARNING

To prevent accidental vehicle start-up, which could cause death or serious injury, remove main fuse before proceeding. (00251b)

#### NOTE

- **For 2007- later vehicles equipped with security siren:** With security fob present, turn ignition switch ON. After system is disarmed, turn ignition switch OFF. **IMMEDIATELY** remove the main fuse per the service manual.
- **For 2006- earlier vehicles equipped with security siren:** Disarm the siren with the key fob or security code. See the service manual to remove the main fuse.
- **For vehicles WITHOUT security siren:** See the service manual to remove the main fuse.

1. Remove seat and disconnect battery negative (-) cable or remove main fuse.

2. Remove acorn nut (1) and flat washer (2) to free horn assembly from rubber mount stud (C).
3. Remove elbow terminals from spade contacts and release main harness conduit from J-clamp (E).
4. Remove flange nut (F) from circular recess at back of horn bracket. Remove horn from chrome horn cover (5).
5. Remove and retain speed nuts (4) from horn cover unless provided in kit.

### INSTALLATION

1. Clip speed nuts (4) to horn bracket (5) at top and bottom holes.
2. Fit horn into new horn cover so the stud at back slides through hole in horn bracket.

#### NOTE

Over tightening the flange nut (F) can cause permanent horn damage resulting in reduced volume and tone quality.

3. Apply two drops of Loctite® 271 (Red) to threads of nut (F) fastening the horn to the horn cover.

#### NOTE

The horn is not polarity sensitive. Elbow terminals can connect to either spade or contact.

4. Install washer (6) and flange nut (F) on horn stud and tighten.  
Torque: 9–11 N·m (80–100 in-lbs)
5. Install elbow terminals onto spade contacts.
6. Capture main harness conduit in J-clamp. Install horn bracket onto rubber mount stud.
7. Apply 2 drops of Loctite 271 (Red) to threads on horn, rubber mount stud (C). Install flat washer (2) and acorn nut (1). Tighten acorn nut.  
Torque: 9–11 N·m (80–100 in-lbs)
8. Connect negative (-) battery cable or main fuse.
9. Test horn.

#### ⚠ WARNING

After installing seat, pull upward on seat to be sure it is locked in position. While riding, a loose seat can shift causing loss of control, which could result in death or serious injury. (00070b)

10. Install seat.

-J05963



Many Harley-Davidson® Parts & Accessories are made of plastics and metals which can be recycled. Please dispose of materials responsibly.

1 / 2

# SERVICE PARTS

is07866a

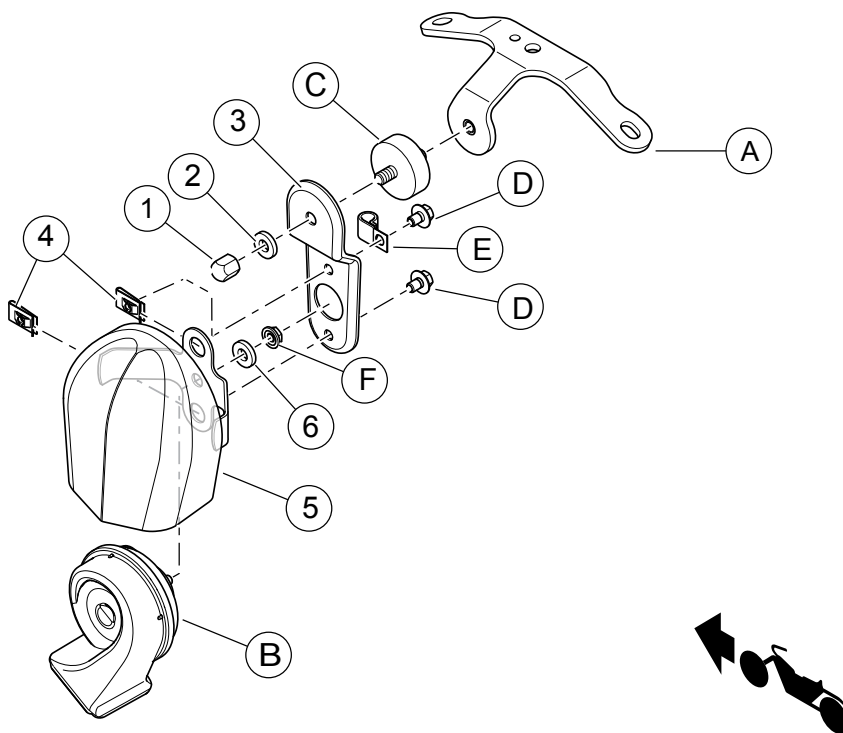


Figure 1. HORN COVER KIT (Cover shown may not reflect actual cover in kit.)

Table 1. Service Parts Table

| Item   | Description (Quantity)   | Part Number         |
|--|--|---------------------|
| 1  | Nut, acorn (For kit 61300452 )   | 10400023            |
| 2  | Washer (For kit 61300452 )   | 10600030            |
| 3  | Horn bracket, black (For kit 61300452 )  | 69274-10            |
|  | Horn bracket, chrome (For kit 68189-07A )  | Not Sold Separately |
| 4  | Speed nuts, (2) (For kit 61300452 )  | 8108                |
| 5  | Horn cover assembly (For kit 61300452 only).   | 61300477            |
|  | Horn cover assembly (For kit 68189-07, 69039-09A, 69166-01B, 69167-02B, 61300621, 61300622, 61300623 ) | Not Sold Separately |
| 6  | Washer (For kit 61300452, 68189-07A, 69039-09A, 69166-01B, 69167-02B, 61300621, 61300622, 61300623 )   | 10300085            |
| <b>Items mentioned in text, but not included in kit:</b> |  |                     |
| A  | Horn mount bracket assembly  |                     |
| B  | Horn, trumpet  |                     |
| C  | Horn, rubber mount   |                     |
| D  | Screw, large flange  |                     |
| E  | Clamp  |                     |
| F  | Hex nut, (metric, M6)  |                     |