



INSTRUCTIONS

-J05756

2013-11-04

WINDSHIELD TRIM

GENERAL

Kit Number

61400224, 61300358

Models

For model fitment information, see the P&A Retail Catalog or the Parts and Accessories section of www.harley-davidson.com (English only).

▲ WARNING

The rider's safety depends upon the correct installation of this kit. If the procedure is not within your capabilities or you do not have the correct tools, have a Harley-Davidson dealer perform the installation. Improper installation of this kit could result in death or serious injury. (00308a)

Kit Contents

See Figure 1 and Table 1.

INSTALLATION

1. See Figure 1. Remove three original equipment (OE) screws and washers. Discard.
2. Install windshield trim (6), washer (2) and center screw (5). Do not tighten at this time.

NOTE

Do not over-tighten screws.

3. Center the windshield trim on the fairing and install end screws (1) and washers (2).
4. Tighten center screw to 2.8–3.4 N·m (25–30 in-lbs).
5. Tighten ends screws to 2.8–3.4 N·m (25–30 in-lbs).

SERVICE PARTS

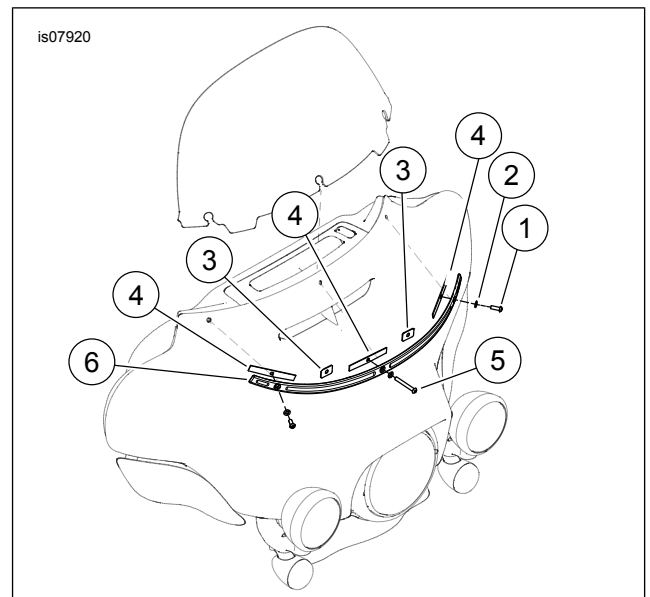


Figure 1. Windshield Trim

Table 1. Service Parts Table

Item	Description (Quantity)	Part Number
1	Screw (2)	4976
2	Washer (3)	6383
3	Pad (2)	6549
4	Pad (3)	10300036
5	Screw	10500034
6	Windshield trim	Not Sold Separately

