



INSTRUCTIONS

-J03892

REV. 2007-08-06

LAYBACK LICENSE PLATE AND TURN SIGNAL RELOCATION KIT

GENERAL

Kit Number

60215-06

Models

For model fitment information, please see the P&A Retail Catalog or the Parts and Accessories section of www.harley-davidson.com (English only).

This kit will fit with license plates measuring a maximum of 7-1/4 x 4-1/4 inches (184 x 108 mm).

Additional Parts Required

This kit is required when installing some Genuine Motor Accessories saddlebags. If this kit is being installed on a vehicle **without** saddlebags, the resulting holes in the fender support covers can be filled with hole plugs:

- For 0.400 inch (10.2 mm) diameter hole, Part Number 53377-04 (chrome)
- For 0.375 inch (9.5 mm) diameter hole, Part Number 56239-93 (chrome)
- For 0.344 inch (8.7 mm) diameter hole, Part Number 68446-00 (chrome)

These items can be purchased from a Harley-Davidson dealer.

WARNING

The rider's safety depends upon the correct installation of this kit. Use the appropriate service manual procedures. If the procedure is not within your capabilities or you do not have the correct tools, have a Harley-Davidson dealer perform the installation. Improper installation of this kit could result in death or serious injury. (00333a)

NOTE

This instruction sheet references Service Manual information. A Service Manual for your model motorcycle is required for this installation and is available from a Harley-Davidson Dealer.

Kit Contents

See Figure 7 and Table 1.

INSTALLATION

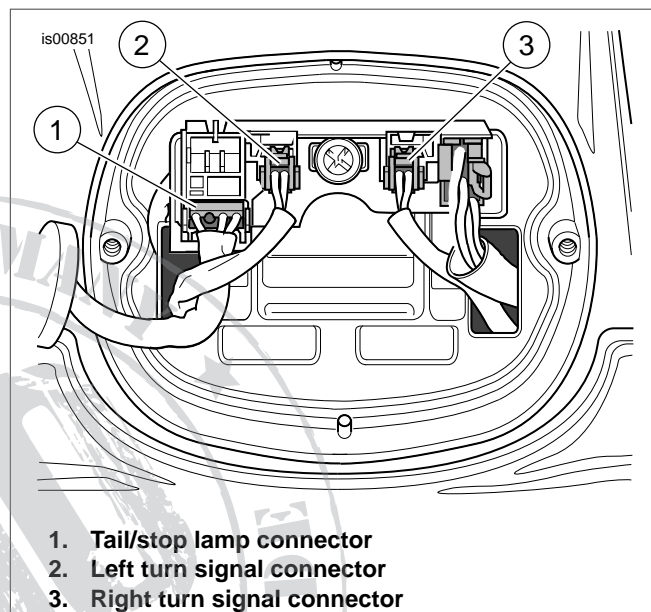


Figure 1. Rear Lamp Connectors

1. Raise the vehicle on a motorcycle lift to allow access to the underside of the rear fender.
2. Refer to the Service Manual and follow the instructions given to remove the negative battery cable (earlier Dyna models) or Maxi[®] Fuse (all XL's and later Dyna models).
3. Remove the license plate from the vehicle (if installed). Remove and discard the original equipment license-plate bracket and attaching hardware from the fender. Clean the mounting area on the fender with a soft, damp cloth.
4. See Figure 1. Remove the two screws securing the tail/stop lamp lens assembly, and remove the lens and bulb assembly. Depress the latch on the four-way tail/stop lamp connector (1), and disconnect the connector from the circuit board.
5. Depress the latches on the left-side (2) and right-side (3) two-way turn signal connectors, and disconnect the connectors from the circuit board.
6. Remove the turn signal wires from the retention clips under the fender.

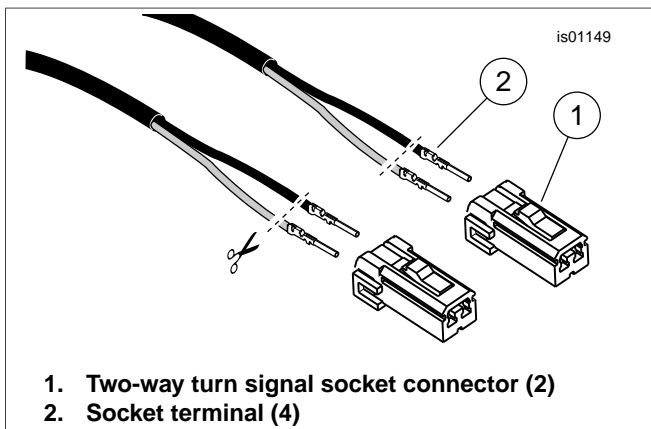


Figure 2. Cut Ends of Turn Signal Wires

7. See Figure 2. Refer to AMP MULTILOCK ELECTRICAL CONNECTORS in the Service Manual. Remove the two socket terminals (2) from each of the two-way turn signal connectors (1). Set the connectors aside for re-installation.

8. Cut all four wires as close as possible to the terminal ends, and discard the terminals.

9. Remove the turn signals and supports from the rear fender. See Figure 3.

XL models: The turn signals are retained by studs (1) and nuts with washers (2) from inside the rear fender.

Dyna models: The turn signals are retained by screws (3) and washers (4) from inside the rear fender.

ALL models: Remove the turn-signal housing assemblies with wires, and the turn signal supports (5) from the vehicle.

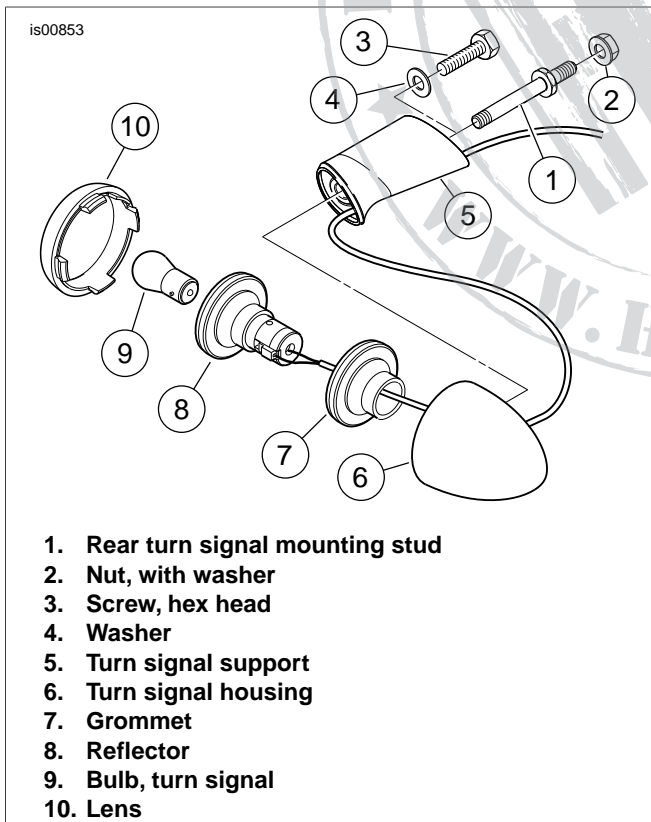


Figure 3. Rear Turn Signal Components

10. Remove the lens (10) and bulb (9) from one rear turn-signal housing (6).

11. Carefully pry the reflector (8) and grommet (7) from the housing. Gently pull the wires out from the unthreaded housing hole and turn signal support (5).

12. **XL models:** Remove the stud (1) to separate the support from the turn-signal housing.

ALL models: Discard the support. Repeat for the opposite turn signal.

13. See Figure 7. Obtain the **new** turn signal bar (9), a hex jam nut (12), split lock washer (11) and turn signal recess cover (10) from the kit.

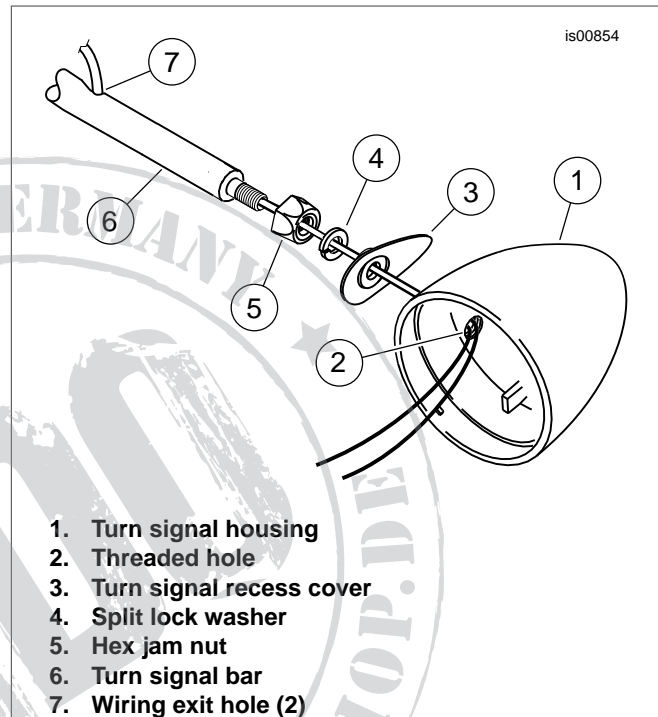


Figure 4. Rear Turn Signal Assembly to Bar

14. See Figure 4. Thread a jam nut (5) onto one end of the turn signal bar (6), and place a split lock washer (4) onto the threads at the same end of the bar.

15. Obtain one of the disassembled turn signals removed in Step 7.

NOTE

Lubricate the turn signal wires with soapy water to ease insertion through the bar, or use a thin wire to pull the wires through.

16. Route the turn signal wires in the following sequence:

- See Figure 3. Insert the wires from the turn signal reflector (8) through the grommet (7), and
- (see Figure 4) through the **threaded** hole (2) in the housing (1) from the inside.
- Position the recess cover (3) against the recess in the turn signal housing, with the wires coming through the hole.
- Insert the wires into the end of the turn signal bar (6) that has the jam nut and lock washer, and out through the oblong wire hole a short distance from the end of the bar.

While pulling the turn signal wires, guide the reflector and grommet squarely into the housing.

17. Screw the turn signal housing onto the threaded end of the turn signal bar, being careful that the wires are not twisted or damaged as the housing is assembled to the bar. The lock washer will fit inside the hole in the recess cover. Hand tighten the jam nut against the lock washer.
18. Install the bulb and lens to the turn signal housing.
19. See Figure 7. Obtain the **new** layback license plate mount (1) from the kit. Insert the turn signal bar into the hole in the right side of the layback license plate mount, and slide it through to exit the hole in the left side.
20. Obtain the second disassembled turn signal, and the remaining hex jam nut (12), split lock washer (11) and turn signal recess cover (10) from the kit.
21. Repeat the earlier procedures to install the left-side turn signal to the turn signal bar.
22. Mark the end of the wire pairs in some manner to allow identification of the wires as coming from the left-side or right-side turn signal.
23. Obtain the triangle gasket (2) and a hex nut with lock washer (5) from the kit.
XL models: Obtain one of the long socket head screws (3) from the kit.
Dyna models: Obtain the short socket head screw (4) from the kit.
24. Position the triangle gasket to the back of the layback license plate mount. Route the right-side turn signal wiring **beneath** the triangular mounting portion of the layback license plate mount, over to the left side of the fender.
25. Start feeding all four turn-signal wires through the hole to the left of the three license-plate bracket mounting holes in the fender.
26. Guide the license mount to the fender as you continue feeding or pulling the turn-signal wires all the way through the hole in the fender.
Little excess wire should remain outside the fender behind the license plate mount.
27. Attach the license mount to the fender with the socket head screw through the **upper** hole (at the 12 o'clock position), loosely fastening using the hex nut with lock washer (5) from the kit.
28. Obtain two long socket head screws (3) and the two remaining hex nuts with lock washers (5) from the kit.
29. Align the turn signal bar so the two wiring exit holes aim downward, lining up with the holes in the fender.
30. Install the two screws through the license plate bracket, turn signal bar and fender. Secure to the fender using the two hex nuts with lock washers. Tighten all three screws securely.
31. Align the rear turn signal housings so that the lenses will be aimed straight rearward for proper visibility. While holding each turn signal in position, tighten the jam nut against the lock washer to 8-10 ft-lbs (10.8-13.6 Nm).
32. Feed the four turn signal wires out through the opening in the lower left of the tail/stop lamp base.

At the cut ends, re-determine which wires come from the left or right turn signal, and ensure they are labeled or marked accordingly.

33. Obtain the four socket terminals (13) from the kit. Refer to AMP MULTILOCK ELECTRICAL CONNECTORS: CRIMPING INSTRUCTIONS in the Service Manual to attach a terminal to the end of each wire.

NOTES

Be sure to keep the wire pair from each turn signal properly identified through the following steps.

*On XL models, the **white** connector is used for the **left-side** turn signal.*

If necessary, carefully strip a short length of the shrink conduit from the ends of the wire pairs for ease of assembly to the connectors. Take care not to cut the wire insulation.

34. For each turn signal, insert the violet wire into cavity 1 of the two-way turn signal connector.
Insert the black wire into cavity 2 of the connector.
35. See Figure 1. Insert the left-side (1) and right-side (2) two-way turn signal connectors into the correct cavities in the tail lamp circuit board.
36. Obtain the tail/stop lamp lens and bulb assembly removed earlier. Insert the four-way connector into the correct cavity in the circuit board.
37. Position the turn-signal wires so they will not be pinched during tail/stop lamp installation. Install the tail/stop lamp lens to the lamp base with the two screws removed in Step 3. Tighten to 20-24 **in-lbs** (2.3-2.7 Nm).
38. See Figure 7. Obtain a clip (15) from the kit (two are provided). Clean an area on the underside of the fender, along the path of the turn-signal wires.
Peel the backing from the adhesive on the clip, and press the clip to the inside of the fender. Fasten the wires into the clip to hold them in place.
39. Obtain four stud plates (6), flat washers (7) and acorn nuts (8) from the kit, and obtain the vehicle license plate.

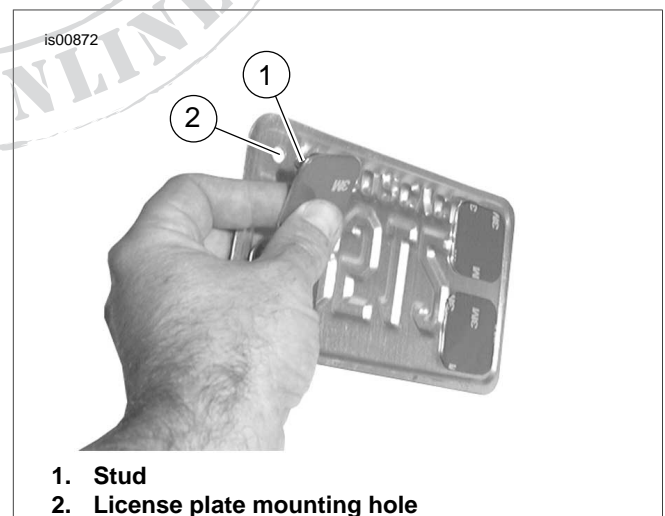


Figure 5. Align Studs to Outside Corners of License Plate

40. See Figure 5. From the back side, install the stud (1) of a stud plate through each of the mounting holes in the license plate.

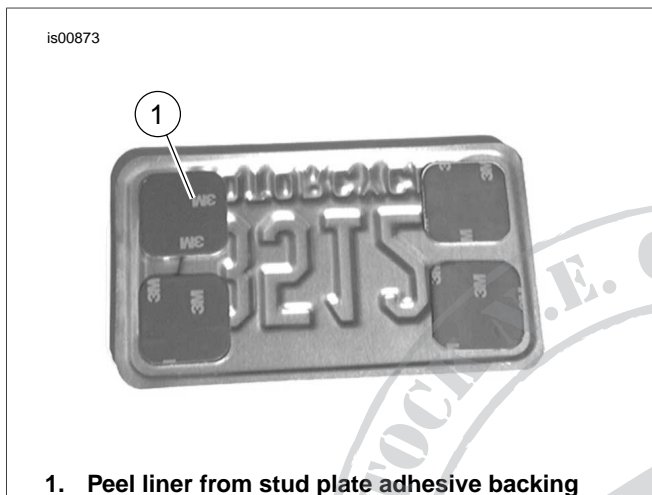
41. Rotate each stud plate so the stud is to the outside corner. Attach each stud plate with an acorn nut and flat washer, and **finger tighten only**.

NOTES

Ambient temperature should be **at least 60° F (16° C)** for proper adhesion of the stud plates to the license plate mount.

Test fit the license plate to the plate mount before removing the adhesive backing.

42. Clean the entire front face of the license plate mount with a mixture of 50 to 70% isopropyl alcohol and 30 to 50% distilled water. Allow to dry thoroughly.



1. Peel liner from stud plate adhesive backing

Figure 6. Remove Liner From Adhesive on Stud Plates

43. See Figure 6. Peel the liner from the adhesive backing of all four stud plates. Carefully position the license plate, with stud plates attached, over the license plate mount. Press the stud plates firmly into place.

NOTE

The stud plate adhesive is pressure activated.

44. Carefully remove the four acorn nuts and washers, and remove the license plate from the studs. Firmly press and rub each of the four stud plates to the surface of the license plate mount.
45. Let the adhesive cure for 24 hours at no less than 60° F (16° C). When the adhesive has fully cured, re-install the license plate to the studs using the acorn nuts and washers. Tighten securely.
46. Verify that the Ignition/Light Key Switch is turned to the OFF position.

Refer to the Service Manual and follow the instructions given to re-attach the negative battery cable (earlier Dyna models) or re-install the Maxi® Fuse (all XL's and later Dyna models).

Re-install the seat (if removed).

⚠ WARNING

After installing seat, pull upward on seat to be sure it is locked in position. While riding, a loose seat can shift causing loss of control, which could result in death or serious injury. (00070b)

⚠ WARNING

Be sure that all lights and switches operate properly before operating motorcycle. Low visibility of rider can result in death or serious injury. (00316a)

47. Test the turn signals, and the rest of the lighting, for proper operation.

SERVICE PARTS

is00847

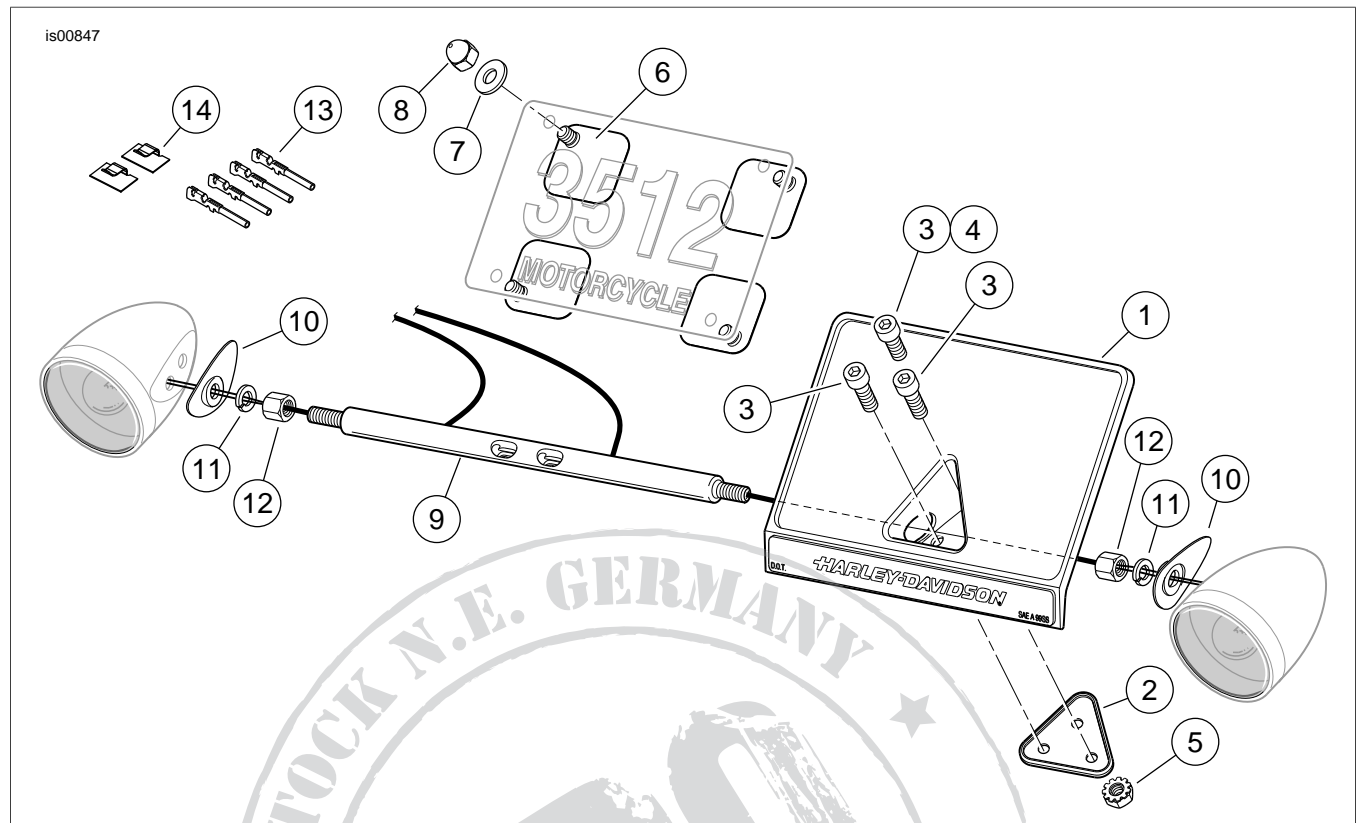


Figure 7. Service Parts, Layback License Plate Mounting With Turn Signal Bar

Table 1. Service Parts Table

Item	Description (Quantity)	Part Number
1	Mount, license plate, layback (with "HARLEY-DAVIDSON" reflector)	Not Sold Separately
2	Gasket, triangle	Not Sold Separately
3	Screw, socket head, 1/4-20 x 3/4 in. (3)	Not Sold Separately
4	Screw, socket head, 1/4-20 x 1/2 in.	Not Sold Separately
5	Hex nut, with lock washer, 1/4-20 (3)	7792
6	Stud plate (4)	59813-00
7	Flat washer, 1/4 in., chrome (4)	94065-90T
8	Acorn nut, low crown, 1/4-20, chrome (4)	94012-00
9	Bar, turn signal	Not Sold Separately
10	Cover, turn signal recess (2)	68028-03
11	Lock washer, split, 5/16 (2)	7042
12	Hex jam nut, 5/16-18 (2)	7849
13	Terminal, socket, #16-20 AWG (4)	73191-96
14	Clip, adhesive-backed (2)	10102