



# INSTRUCTIONS

-J05914

2015-11-10

## CVO STYLE REAR FENDER KITS

### GENERAL

#### Kit Numbers

59500245, 59500246, 59500469, 59500470

#### Models

For model fitment information, see the P&A retail catalog or the Parts and Accessories section of [www.harley-davidson.com](http://www.harley-davidson.com) (English only).

#### Installation Requirements

A wallpaper seam roller is required for proper installation of the lighting harness in this kit.

The help of an assistant aids in the removal and placement of the fender.

#### ▲ WARNING

The rider's safety depends upon the correct installation of this kit. Use the appropriate service manual procedures. If the procedure is not within your capabilities or you do not have the correct tools, have a Harley-Davidson dealer perform the installation. Improper installation of this kit could result in death or serious injury. (00333a)

#### NOTE

This instruction sheet refers to service manual information. A service manual for this year/model motorcycle is required for this installation. One is available from a Harley-Davidson dealer.

#### Kit Contents

See Figure 5 and Table 1.

#### PREPARATION

#### ▲ WARNING

To prevent accidental vehicle start-up, which could cause death or serious injury, remove main fuse before proceeding. (00251b)

#### NOTE

- **Vehicles WITH security siren:** With security fob present, turn ignition switch ON. Disarm security system. **IMMEDIATELY** remove the main fuse per the service manual.
- **Vehicles WITHOUT security siren:** See the service manual to remove the main fuse.

1. Remove the saddlebags per the service manual.
2. Remove the left and right side covers per the service manual, unless already done.
3. Remove seat. Retain the seat and all mounting hardware.

4. Remove the license plate (if installed). Set aside for later installation. The license plate bracket and reflector can remain on the fender.
5. See the service manual to remove and save the following items if present:
  - Tour-Pak<sup>®</sup> luggage rack or Tour-Pak support,
  - Rider backrest,
  - Passenger backrest,
  - Grab rail, reinforcement plate and fasteners.
6. Release the air pressure in the rear suspension per the service manual. Disconnect the right side shock absorber hose at one end.

#### FENDER REMOVAL

#### NOTE

The help of an assistant aids in the removal of the fender.

1. See the service manual to remove the rear fender from the vehicle, with the following exception:
  - a. The tail lamp assembly, turn signal bar, rear fender tip lamp, rear lighting harness (and **when present**, the rear fascia and rear fascia lamp) can remain on the fender.



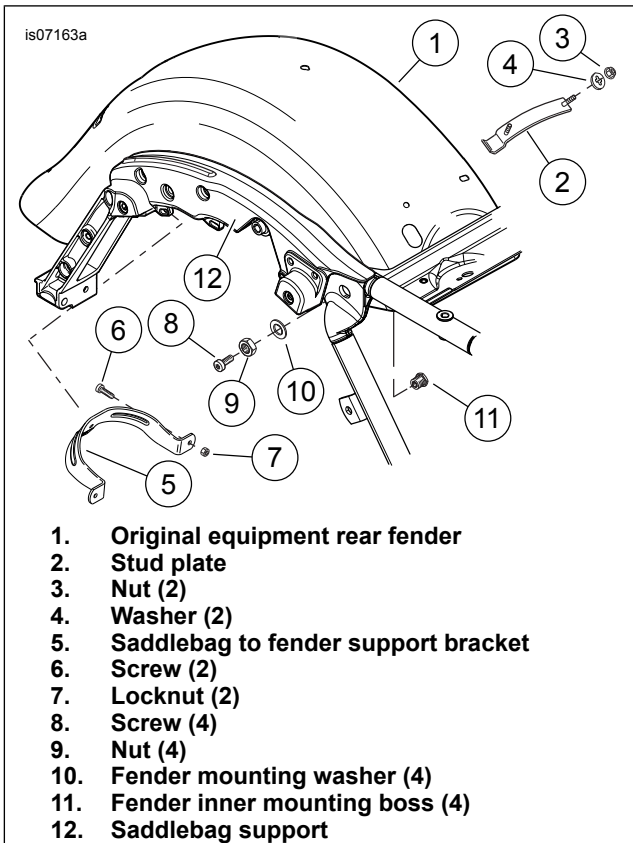


Figure 1. Remove Rear Fender Items

2. See Figure 1. Remove the following items from the OE fender (1), and set aside for later installation to the **new** fender:
  - a. The stud plate (2), two nuts (3) and two washers (4) at the front of the fender, and
  - b. the saddlebag to fender support bracket (5), two screws (6) and two locknuts (7) at the rear of the fender.
  - c. The saddlebag supports (12).

## FENDER ASSEMBLY

### NOTE

Finish paint the rear fender, fascia and license plate light cover before assembly.

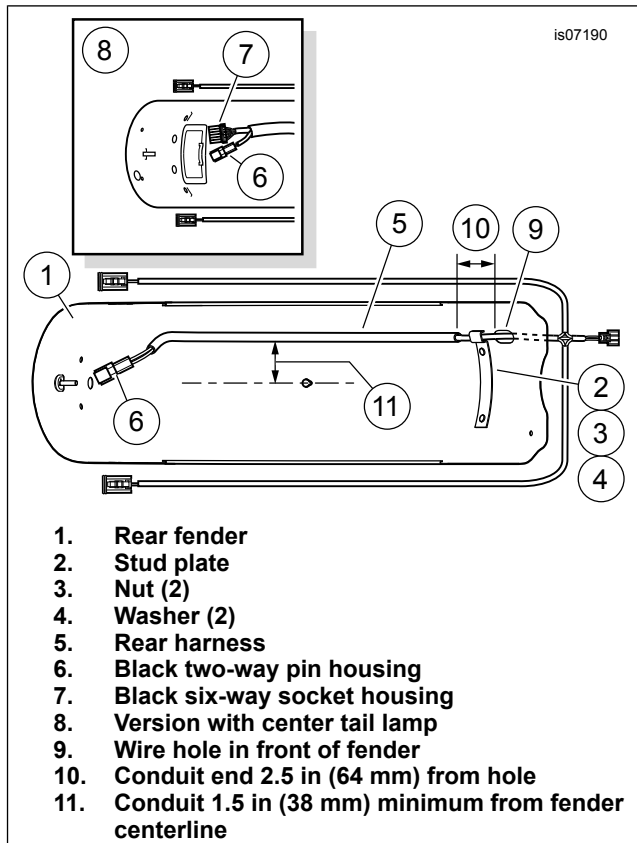


Figure 2. Install Rear Fender Harness

## Harness Installation

### NOTE

- Ambient temperature must be **at least** 16 °C (60 °F) for proper adhesion of the harness conduit to the fender.
  - Allow **AT LEAST 24 hours** after applying the harness before exposing the area to strong water spray or extreme weather.
  - The adhesive bond will increase to maximum strength after about 72 hours at normal room temperature.
1. See Figure 2. Clean the fender (1) underside along the harness mounting path as shown with a mixture of 50 percent isopropyl alcohol and 50 percent distilled water. Allow to dry completely. Do not use solvents or harsh chemicals that damage painted surfaces.

### NOTE

The two branches of the rear lighting harness without adhesive conduit remain **outside** the fender.

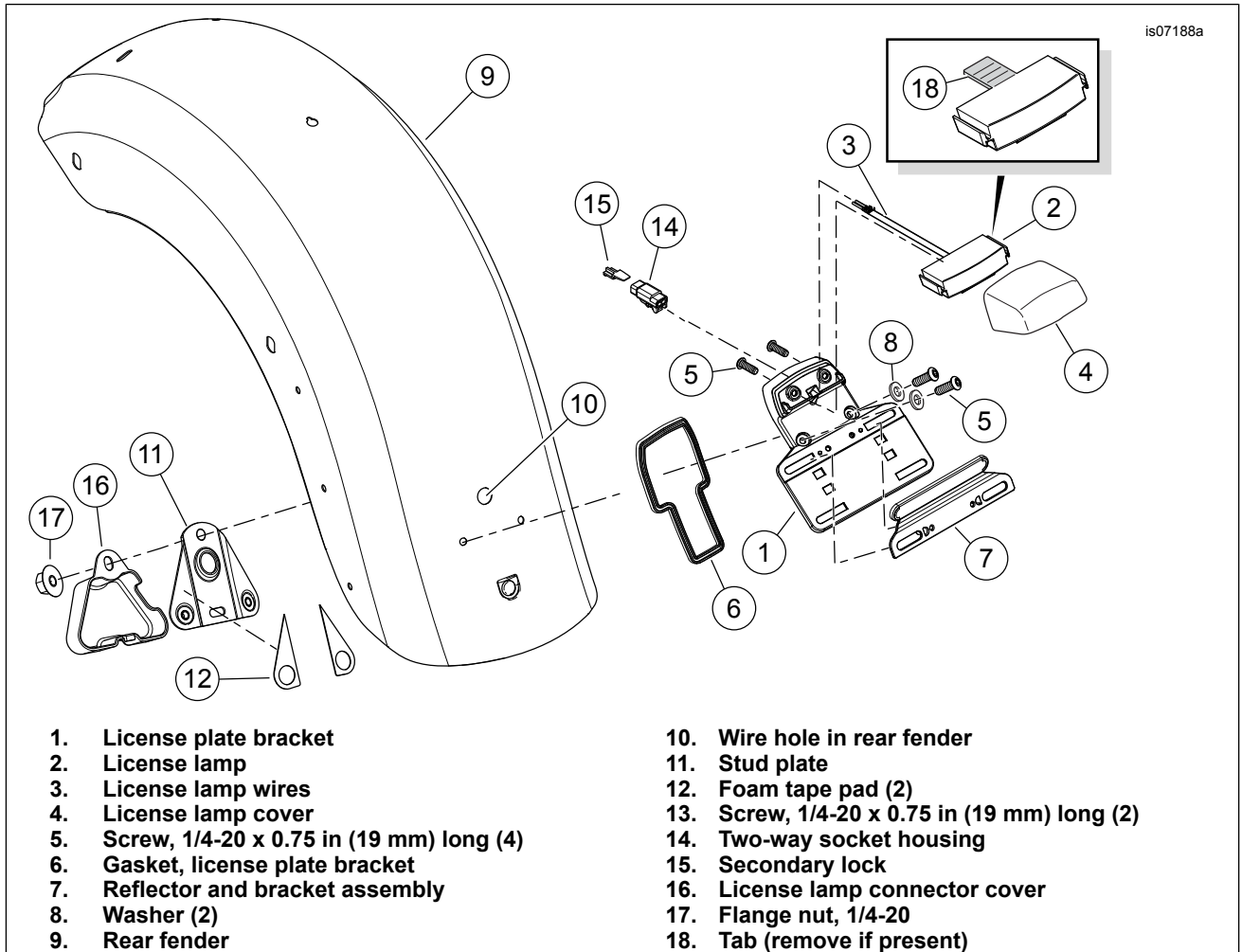
2. Get the stud plate (2) removed from the OE fender. Position the plate to the inside front of the fender with the channel positioned nearest the wire hole. Loosely assemble the plate to the fender with the OE nuts (3) and washers (4). Do not fully tighten.
3. Install the rear harness (5) to the underside of the fender:
  - a. Feed the main body of the harness (with adhesive conduit), from the outside, through the hole (9) in the front of the fender.

- b. Lay the harness along the length of the fender. Position the forward end of the adhesive conduit about 64 mm (2½ in) from the wire entry hole. Lay the conduit a **minimum** of 38 mm (1½ in) from the centerline of the fender. Mark the position of the conduit on the fender.
- c. Beginning at the rear, pull the tab on the harness conduit to expose the adhesive while pressing the conduit into place along the length of the fender. Use a wallpaper seam roller to press the conduit securely in place. At the front, capture the wire harness under the stud plate channel.

- d. Tighten the stud plate nuts to 6.8–10.9 N·m (60–96 in-lbs).

**NOTE**

- Proceed with assembly and installation of the fender, but do NOT pull or reposition the adhesive conduit.
- Allow the adhesive 72 hours to cure fully.



**Figure 3. License-Plate Lamp and Bracket Installation**

## License Lamp Installation

### NOTE

Some license lamps have a tab (see Figure 3 inset, Item 18) that prevents installation. Remove the tab before proceeding.

1. See Figure 3. Assemble the license lamp (2) and cover (4) to the license plate bracket (1). Tighten the screws (5) to 6.4–7.8 N·m (57–69 in-lbs).
2. Get the stud plate (11) and two foam tape pads (12) from the kit. Remove the liner from the adhesive backing on one side of one pad. Carefully position the pad to a flange of the stud plate, on the side opposite the nuts. Press firmly into place. Repeat with the second pad on the remaining flange. Remove the liner from the exposed side of the pads.
3. Feed the lamp wires (3) through the license bracket (1) and the hole (10) in the fender (9).
4. Hold the stud plate (11) in place on the underside of the fender. Secure the license plate bracket (1) to the stud plate with washers (8) and screws (5). Tighten the screws securely.
5. Insert the license lamp wires into the two-way socket housing (14) per the service manual. Secure with the secondary lock (15). Plug the two-way pin housing on the rear harness into the license lamp socket [45B].
6. Install the license lamp connector cover (16). Secure with a flange nut (17). Tighten the nut to 3.4–5.1 N·m (30–45 in-lbs).
7. Secure the wire harness with the clip on the inside of the fender.
8. Install to the reflector and bracket assembly (7) as shown.

## Center Stop/Tail Lamp Installation (For Models So Equipped)

Install the **new** center stop/tail lamp per service manual instructions.

## Rear Fascia Installation

1. See Figure 1. Install a **new** fender mounting boss (11), from the inside, through one of the four holes in the sides of the fender. Place a washer (10) onto the threads of the boss, and fasten with a nut (9). Tighten the nut to 20.3–27.1 N·m (15–20 ft-lbs). Repeat for the remaining three holes.
2. See Figure 4. Remove the liner from the adhesive backing of the 44.5 x 19 x 1.6 mm ( x in) rubber pad (2). Position the pad to the center of the fascia (1), just below the slot as shown. Press firmly into place.
3. Position the fascia under the rear edge of the fender. Align the three holes on each side of the fascia with the mating holes in the fender. Insert the three studs of a stud plate (3), from beneath the fender, through the fender holes and fascia on one side.

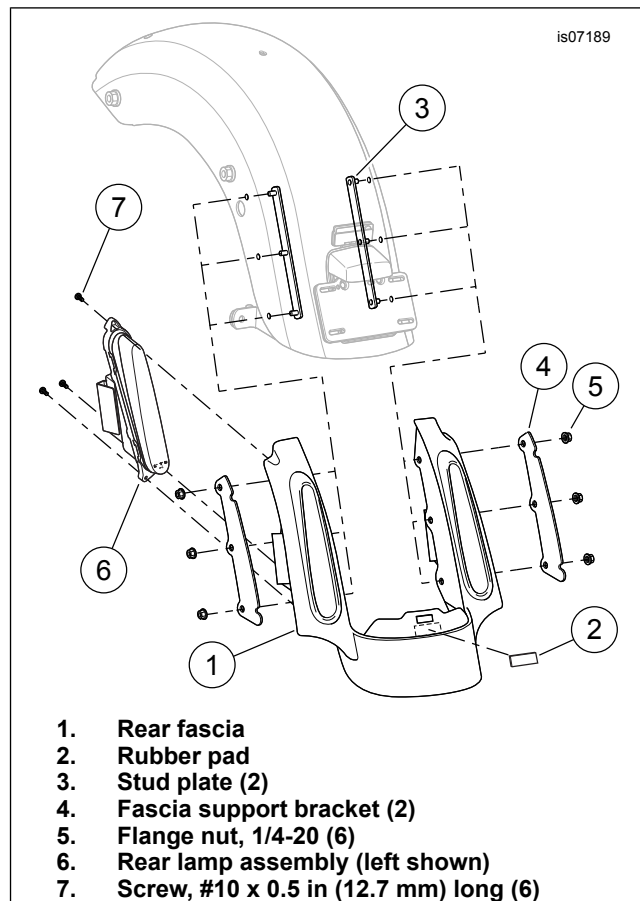


Figure 4. Rear Fascia Installation

4. Install a fascia support bracket (stiffener plate, 4) over the studs. Loosely install three flange nuts (5) onto the stud threads.

### NOTE

- **U.S. models only:** The fascia-mounted LED lamps are identical.
- **International models:** The fascia-mounted LED lamps are side-specific. The label on the back of the left side lamp is marked "LEFT". The right side lamp is marked "RIGHT".

Remove the blue film from the lens faces **before** the lamps are installed in the fascia.

5. Loosely fasten the other side of the fascia with the remaining stud plate, support bracket and flange nuts. Alternately tighten each flange nut to 3.4–5.1 N·m (30–45 in-lbs).
6. Install a rear fascia lamp (6) into the correct-side opening in the fascia from behind. Fasten with three black #10 TORX® screws (7). Alternately tighten each screw to 1.6–2.1 N·m (14–18 in-lbs). Repeat for the remaining fascia lamp.

## Antenna Relocation on FLHX and FLHTRX Models

1. See Figure 5. Disconnect the antenna cable from the antenna base assembly.
2. Unscrew the antenna mast from the antenna base.

3. Remove the lower locknut. Remove the antenna base from the mounting bracket.
4. Remove the two screws and lockwashers retaining the antenna mounting bracket.
5. Remove and discard any cable straps securing the antenna cable to the fender support and saddlebag rear support brackets.
6. Position the **new** antenna bracket (30) near the fender supports as shown in Figure 5 and fasten the bracket to the fender supports:
  - a. Assemble the thin washer (37) to the screw threads.
  - b. Install screws (36) and washers (37) through antenna bracket from rear.
  - c. Slide the spacers (34 and 35) onto the threads that are extending through the bracket. Note the spacer lengths. Reference Figure 5.
  - d. Align and fasten this bracket and fastener assembly to the fender support and tighten to 20.3–27.1 N·m (15–20 ft-lbs).
7. Install tooth lockwasher (32) from the kit onto the larger threads of the antenna base (31), under the hex nut (33). Insert the antenna base through the hole in the antenna mounting bracket.
8. Install the second hex nut (33) onto the threads of the antenna base. Place a wrench on the upper nut and tighten the lower nut to 8 N·m (6 ft-lbs).
9. Plug the antenna cable connector into the antenna base. Tighten the knurled nut to secure the connector to the antenna base. Allow slack in the cable at the antenna base to avoid kinking or binding at the connection.
10. Fasten the antenna cable to the fender support bar with a cable strap. Use a second cable strap to tie the antenna cable (FLHX models, the excess rear fascia lamp wires) to the frame rail, near the suspension air lines, underneath the painted cover. **DO NOT** tie the cable to the air lines.
11. Thread the antenna mast assembly securely onto the antenna base (31).
2. See Figure 5. Get four 5/16-18 x 25.4 mm (1 in) long fender mounting screws (5) from the kit. Loosely install a screw through the rear frame rail into the rearmost fender mounting boss on each side.
3. Align the front mounting holes. Loosely install the remaining screws through the frame rails into the forward fender mounting boss on each side.
4. Get the two 5/16-18 x 25.4 mm (1 in) long fender mounting screws and flanged locknuts saved earlier. Install the screws, **from the front**, through the saddlebag support lower rear mounting holes and the saddlebag to fender support bracket. Loosely install the flanged locknuts onto the screw threads.

**NOTE**

**FLHX Models:** *The electrical caddy must be loosened to allow the harness connector to fit through.*

5. Route the harness leg with the gray four-way connector between the front of the fender and the **left side** fender support. Plug the connector [18] into the left side fascia lamp.
6. Route the harness leg with the black four-way connector between the front of the fender and the **right side** fender support. Plug the connector [19] into the right side fascia lamp.
7. Alternately tighten the four fender mounting screws to 20.3–27.1 N·m (15–20 ft-lbs).
8. Install the rear shock absorber air hose to the air valve assembly on the left side.
9. See Figure 1. Install the saddlebag supports (12).
10. Loosely install the passenger grab strap.
11. See Figure 5. Use a clip (7) from the kit to fasten a harness leg to the clip slot on the underside of each saddlebag support.

**COMPLETION**

**NOTE**

*To prevent possible damage to the sound system, verify that the ignition switch is OFF **before** installing the main fuse.*

1. See the service manual to install the main fuse.

**▲ WARNING**

**To prevent accidental vehicle start-up, which could cause death or serious injury, remove main fuse before proceeding. (00251b)**

2. Verify that all lights are working properly before putting the motorcycle in service.

**FENDER INSTALLATION**

**NOTE**

- *The help of an assistant aids in the placement of the fender onto the motorcycle.*
  - *Protect the lower edges of the fascia beneath the tail lamps with tape to prevent the mufflers damaging the paint during fender installation.*
1. Carefully roll forward the **new** fender into position between the rear frame rails.

# SERVICE PARTS

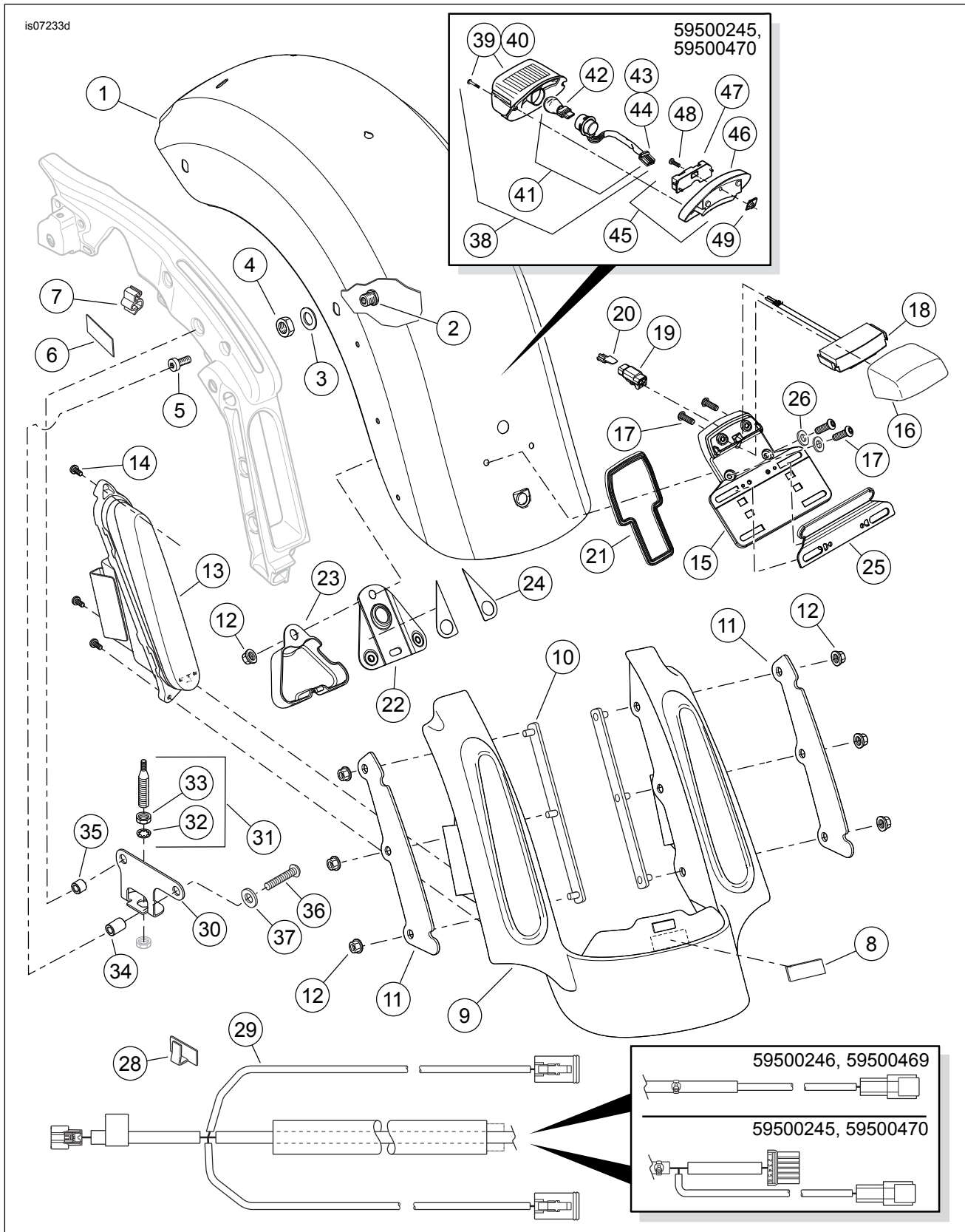


Figure 5. Service Parts, FL Touring CVO-Style Rear Fender Kits

# SERVICE PARTS

Table 1. Service Parts

Item	Description (Quantity)	Part Number
1	Fender, rear (Prime paint, no center tail lamp opening) (for kit 59500246) Fender, rear (Prime paint, with center tail lamp opening) (for kit 59500245)	60463-09A 60472-09A
2	Boss, fender mounting (4)	59786-01

Table 1. Service Parts

Item	Description (Quantity)	Part Number
3	Washer, fender mounting (4)	59788-01
4	Hex nut, 1/2-13 (4)	7880
5	Screw, pan head TORX, self-tapping, 5/16-18 x 25.4 mm (1 in) long (4)	3684
6	Cushion, saddlebag support (2)	11100068
7	Clip (6) (for kits 59500246 and 59500469) Clip (2) (for kits 59500245 and 59500470)	69200313
8	Spacer, rubber, adhesive-backed, 44.5 x 19 x 1.6 mm ( x in)	11891
9	Fascia, rear fender (unpainted) (for kits 59500246 and 59500245)	59500107
10	Stud plate (2)	59500018
11	Fascia support bracket (2)	67900185
12	Large flange nut, 1/4-20 (7)	7499
13	LED stop/tail/turn signal lamp assembly (Red, with Smoke lens) (2) (for kits 59500246 and 59500469) LED turn signal lamp assembly (Amber), right (for kits 59500245 and 59500470) LED turn signal lamp assembly (Amber), left (for kits 59500245 and 59500470)	. 67800201 67800203 67800204
14	Screw, pan head TORX, black, #10 x 12.7 mm (0.5 in) long (6)	3152
15	Bracket, license plate	67900233
16	Cover, license light (unpainted) (for kits 59500246 and 59500245)	60934-10
17	Screw, 1/4-20 x 19 mm (0.75 in) (4)	940
18	Light, license plate	60920-09
19	Socket housing, 2-way, black	74112-98BK
20	Secondary lock	74152-98
21	Gasket, upper license plate	67900232
22	Stud plate	59840-09
23	Connector cover	60916-09
24	Foam pad, adhesive-backed, license plate bracket (2)	11100008
25	Reflector and bracket assembly	67900244
26	Washer (2)	6119
28	Clip, adhesive-backed (2)	10102
29	Harness, rear lighting (for kits 59500246 and 59500469) Harness, rear lighting (for kits 59500245 and 59500470)	69200720 69200719
30	Antenna bracket, rear	76555-09
31	Antenna base assembly (includes items 32-33)	76335-87
32	• Lock washer	7129
33	• Nut (2)	76259-86
34	Spacer, antenna, front	12400091
35	Spacer, antenna, rear	12400092
36	Screw, button head TORX, 5/16-18 x 41.3 mm (1.62 in) long, Grade 8 (2)	3148
37	Flat washer (2)	6702
<b>Items used in kits 59500245 and 59500470 only:</b>		
38	Light assembly, tail lamp (includes items 39-44)	68142-04
39	• Lens, tail lamp (includes item 40)	68558-03
40	• ..... Screw, tail lamp (2)	68026-99
41	• Bulb and socket assembly, tail lamp (includes item 42-44)	69187-03A
42	• ..... Bulb, tail lamp, wedge mount	68167-04
43	• ..... Socket housing, four-way	73154-96BK
44	• ..... Socket terminal, #16-20 AWG (3)	73191-96
45	Tail lamp base assembly (includes items 46-47)	68066-99A
46	• ..... Tail lamp base (chrome)	68296-99A
47	• ..... Circuit board and cover	68830-99A
48	Screw, socket head, 1/4-20 x 16 mm (5/8 in) long	3022A
49	J-nut	7964