



# INSTRUCTIONS

-J01421

REV. 2005-12-08

## FXSTD DETACHABLE WINDSHIELD AND DOCKING HARDWARE KITS

### GENERAL

#### Kit Number

57090-00A, 57824-00A, 57837-00A, 58397-00, 58692-04, 57840-04

#### Models

These kits fit 2000 and later FXSTD (Deuce®) models except FXSTDSE.

Table 1. Models

Kits	Contents
57090-00A	Standard height, clear, windshield
57824-00A	Low profile, smoked, windshield
57837-00A	Super sport smoked, windshield
58692-04	Standard height, clear windshield with <b>Skull and Wings</b> emblem
57840-04	Standard height, clear windshield with flames

Installation of any of the above windshield kits will also require a Docking Hardware Kit (Harley-Davidson Part Number 58397-00), available separately from any Harley-Davidson dealer.

### CAUTION

Do not use windshield bags with flamed windshields. Damage to graphics will occur. (00393f)

#### Additional Parts Required

### WARNING

The rider's safety depends upon the correct installation of this kit. Use the appropriate service manual procedures. If the procedure is not within your capabilities or you do not have the correct tools, have a Harley-Davidson dealer perform the installation. Improper installation of this kit could result in death or serious injury. (00333a)

#### NOTE

This instruction sheet references Service Manual information. A Service Manual for your model motorcycle is available from any Harley-Davidson Dealer.

#### Kit Contents

See Figure 3 and Table 2, Figure 4 and Table 3, Figure 5 and Table 4.

### INSTALLATION

#### NOTE

Use the Docking Hardware Kit to assemble two upper and two lower clamps. See the Service Parts illustration. The upper clamps use a mounting pin (4) and the lower clamps use a button head screw (5) to fasten the windshield mounting bushing.

1. Assemble the windshield docking hardware as follows:
  - a. Install a **larger** chrome washer (6) and bushing (7) onto a button head screw (5). Thread the screw into the boss on one of the clamps (1), and tighten finger tight. Repeat for a second lower clamp.
  - b. Install a **larger** chrome washer (6) and bushing (7) onto a mounting pin (4). Thread the pin into the boss on one of the clamps (1), and tighten finger tight. Repeat for a second lower clamp.

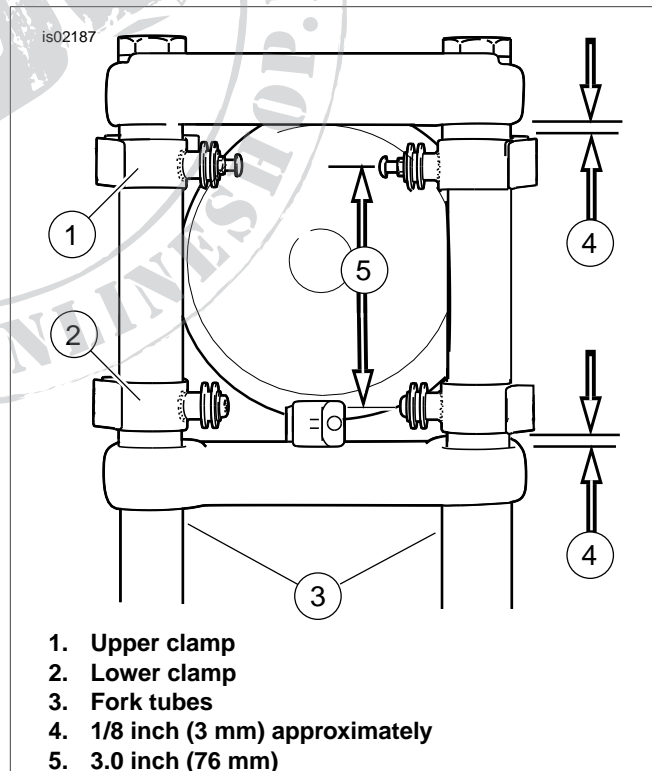


Figure 1. Installing Clamps

#### NOTE

Place shop rags on the headlamp, front fender and front of the fuel tank to prevent scratches to these components. Be sure

the windshield assembly does not contact chrome or painted parts. Contact will cause scratches to chrome or painted parts.

- See Figure 1. Install a lower clamp onto a fork tube using a smaller chrome washer and lock nut from the kit. Adjust so the clamp is approximately 1/8 inch (3 mm) from the top of the lower triple clamp, then finger tighten the lock nut.

Repeat with the second lower clamp and fork tube.

**NOTE**

Keep front wheel straight to prevent brackets from scratching fuel tanks.

See Figure 1. Install the clamps on the fork tubes so the bushing center lines are 3 inches (76 mm) apart.

- Install an upper clamp onto a fork tube using a smaller chrome washer and lock nut from the kit. Adjust so the clamp is approximately 1/8 inch (3 mm) from the bottom of the upper triple clamp. Ensure that the center lines of the upper and lower bushings are 3 inches (76 mm) apart, then finger tighten the lock nut.

Repeat with the second upper clamp and fork tube.

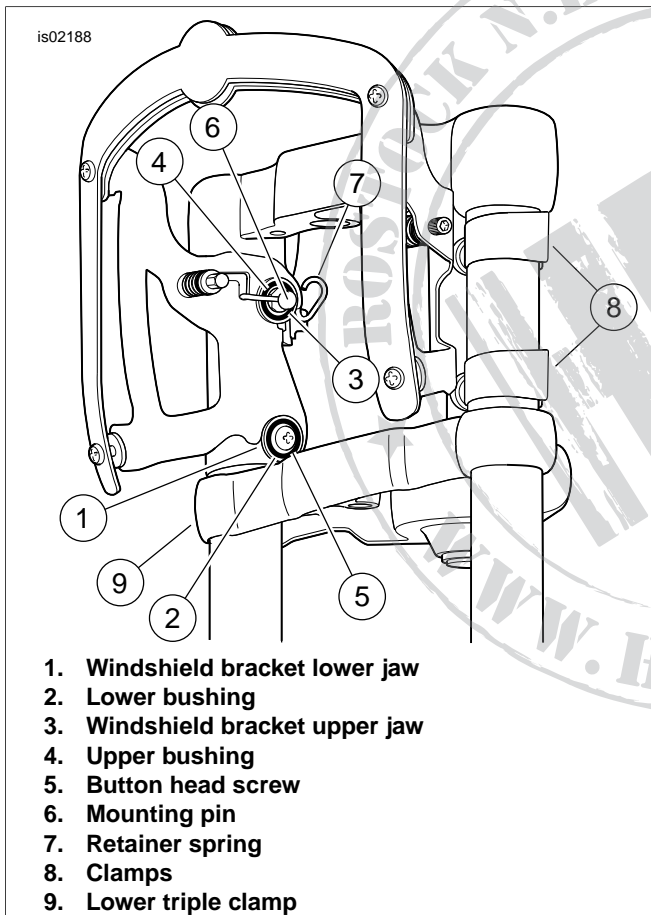


Figure 2. Installing the Windshield

- See Figure 2 and the Service Parts illustration for your windshield. Install the windshield to the motorcycle as follows:
  - Carefully hook the jaws (1) at the bottom of the windshield mounting brackets into the grooves of the lower bushings (2).
  - Hook the jaws (3) at the top of the windshield mounting brackets into the grooves of the upper bushings (4).
  - Slide the windshield down until all four jaws fit firmly into the bushings.
  - Tighten the lower button head screws (5) to 15 ft-lbs (20.3 Nm).
  - Tighten the upper mounting pins (6) to 15 ft-lbs (20.3 Nm).
  - Hook the retainer springs (7) over the mounting pins.

**NOTE**

Before tightening, ensure that there is at least 1/16 inch (2 mm) clearance between the bottom of the lower windshield bracket jaws (1) and the top of the lower triple clamp (9).

- With the windshield in place, tighten the docking hardware clamp (8) locknuts to 10 ft-lbs (14 Nm). Be sure that the clamps do not rotate during tightening. The mounting bushings must remain parallel to the windshield brackets.

**NOTE**

Check windshield for proper alignment with headlight opening. If necessary, adjust the mounting clamps for proper headlamp to windshield alignment.

**WARNING**

Improper installation of accessories or loading of cargo can affect motorcycle stability and handling, which could result in death or serious injury. (00455b)

**WARNING**

Failure to provide adequate clearance between stationary and moving parts can cause loss of control, which could result in death or serious injury. (00378a)

**NOTE**

Inspect windshield upon completion of installation. Be sure windshield mounting does not restrict full left or full right movement of front fork assembly. Restricted movement could affect handling, resulting in death or serious injury. If restriction does occur, adjust windshield as needed until proper clearance is obtained. Have experienced Harley-Davidson service personnel correct any problems before riding with this accessory installed.

**NOTE**

Check mounting hardware periodically. Never ride with loose mounts. A loose mounting causes extra stress on all other mounts, as well as the windshield itself, and could result in premature failure of components.

## REMOVING THE WINDSHIELD

To remove the windshield, grab the windshield edges on each side of the center brace and firmly pull the windshield loose from the bushing grooves.

## CARE AND CLEANING

### NOTE

*Sunlight reflections off of the inside curvature of a windshield can, at certain times of the day, cause extreme heat build-up on motorcycle instruments. Exercise care in parking. Park facing the sun, place an opaque object over the instruments, or adjust the windshield to avoid reflections.*

### CAUTION

**Harley-Davidson windshields are made of Lexan. Lexan is a more durable and distortion-resistant material than other types of motorcycle windshield material, but still requires attention and care to maintain. Failure to maintain Lexan properly can result in damage to the windshield. (00230a)**

### CAUTION

**Do not use harsh chemicals including rain sheeting products on Harley-Davidson windshields. They can cause dulling or hazing. If you want to use a windshield protectant on your windshield, try Harley Glaze Polish and Sealant (00231a)**

### CAUTION

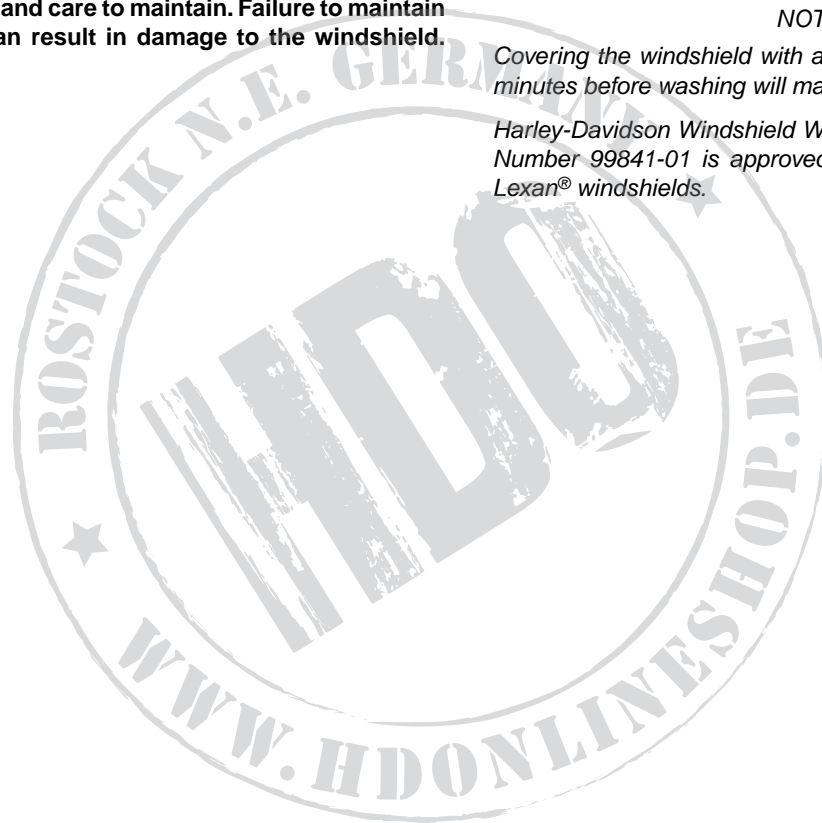
**Do not use benzine, paint thinner, gasoline or any other type of harsh cleaner on the windshield. Doing so will damage the windshield surface. (00232a)**

Do not clean Lexan® polycarbonate in hot sun or high temperature. Powdered, abrasive or alkaline cleanser will damage the windshield. Never scrape the windshield with a razor blade or other sharp instruments because permanent damage will result.

### NOTES

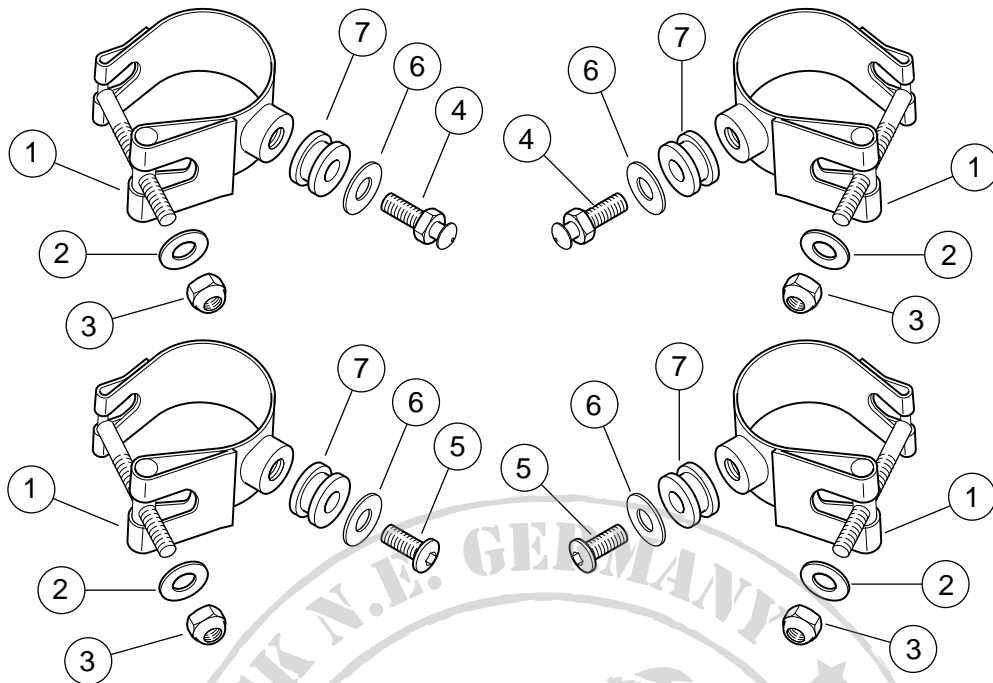
*Covering the windshield with a clean, wet cloth for about 15 minutes before washing will make dried bug removal easier.*

*Harley-Davidson Windshield Water Repellent Treatment Part Number 99841-01 is approved for use on Harley-Davidson Lexan® windshields.*



# SERVICE PARTS

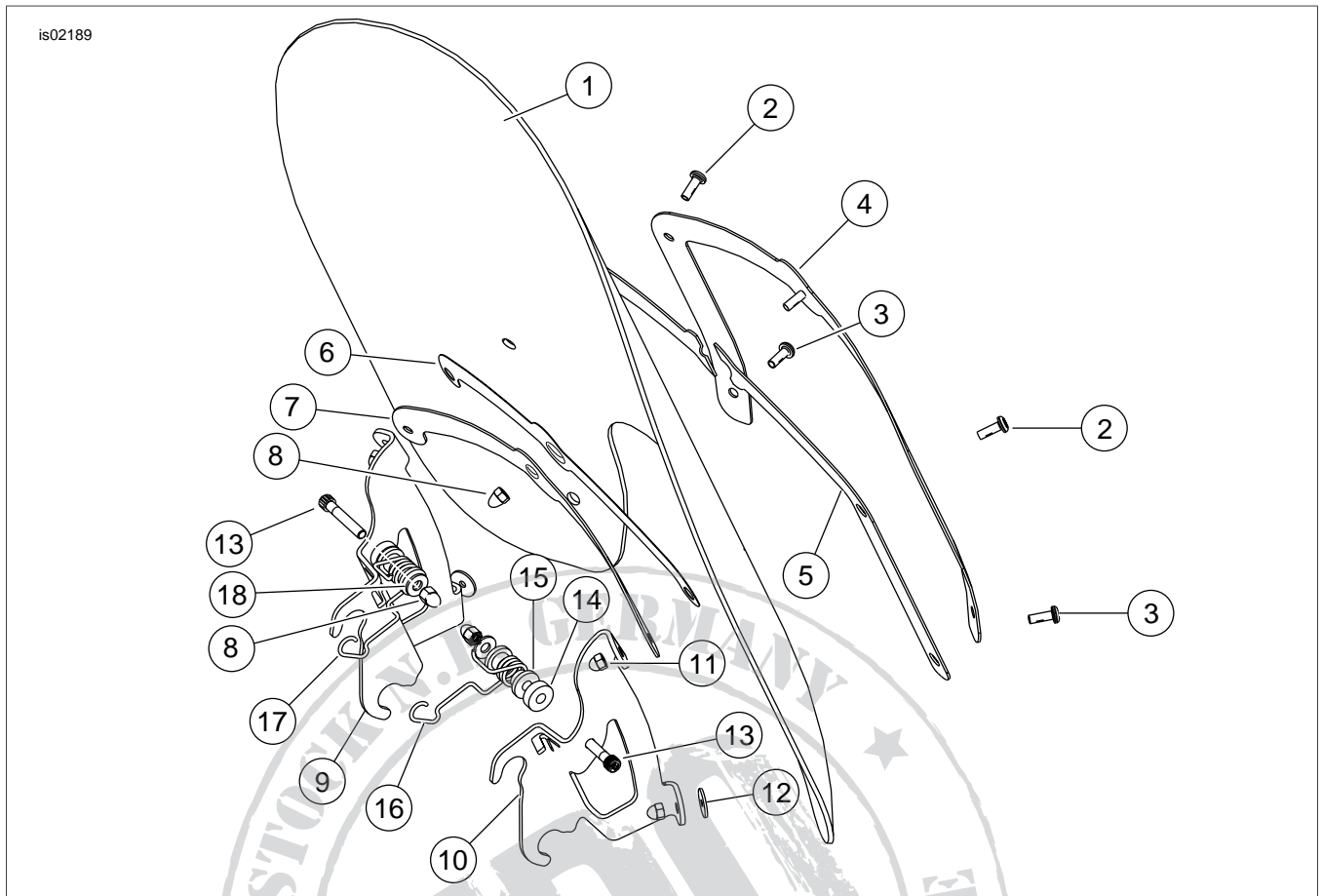
is02190



**Figure 3. Service Parts: Windshield Docking Hardware Kit**

**Table 2. Service Parts: Windshield Docking Hardware Kit**

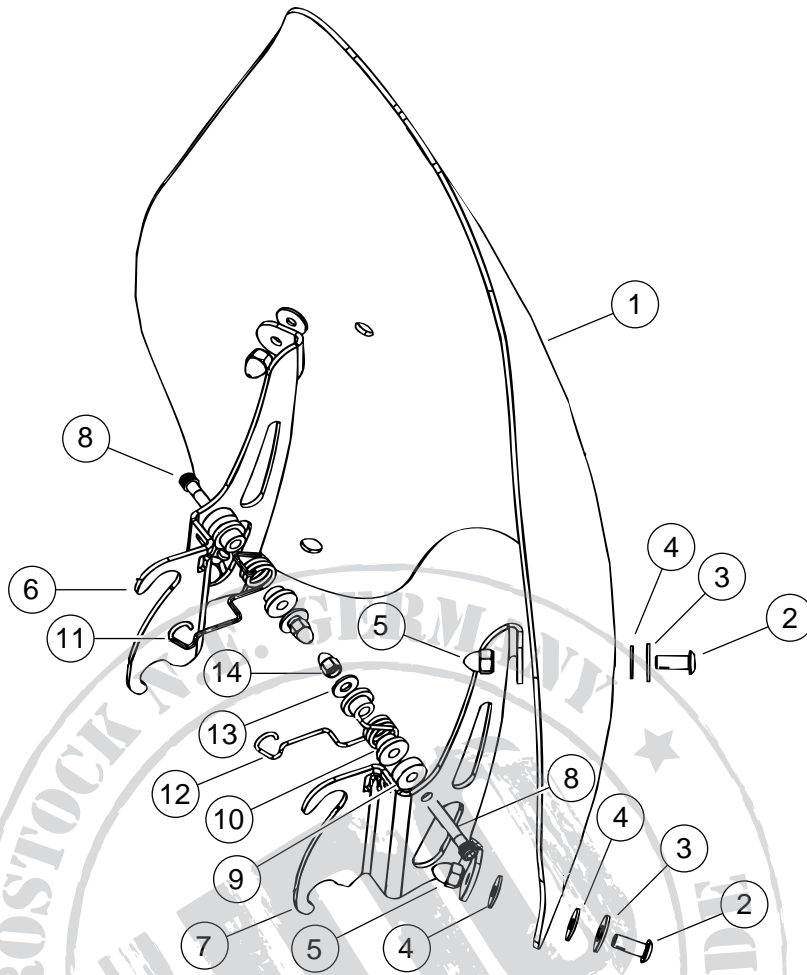
Item	Description (Quantity)	Part Number
1	Clamp, windshield (4) (includes items 2 and 3)	58351-96
2	Washer, 1/4 inch, chrome (4)	94065-90T
3	Lock nut, 1/4-28, chrome (4)	94027-92T
4	Pin, mounting (2)	58172-96
5	Screw, button head, 5/16-24 x 5/8 inch (2)	94468-94T
6	Washer, 5/16 inch, chrome (4)	94066-90T
7	Bushing (4)	67621-94



**Figure 4. Service Parts: Windshield, Clear or Skull Clear, Standard Height, and Smoked, Low Profile**

**Table 3. Service Parts: Windshield, Clear or Skull Clear, Standard Height, and Smoked, Low Profile**

Item	Description (Quantity)	Part Number	Item	Description (Quantity)	Part Number
1	Replacement windshields		7	Brace, inner windshield	
	Standard height, clear	57088-00A		for Windshield Kit 57090-00A	57093-00A
	Low profile, smoked	57087-00A		for Windshield Kit 57824-00A	57093-00A
	Standard height, clear with flames	57894-04		for Windshield Kit 58692-04	58591-04
2	Screw, pan head, Torx (2) #12-24 x 13/16 inch long	2452	8	Acorn nut, 1/4-20, chrome (3)	94004-90T
3	Screw, pan head, Torx (2) #12-24 x 5/8 inch long	2921	9	Windshield bracket (left)	57097-00
4	Brace, outer windshield		10	Windshield bracket (right)	57098-00
	for Windshield Kit 57090-00A	57092-00	11	Acorn nut, #12-24, chrome (4)	7623
	for Windshield Kit 57824-00A	57092-00	12	Washer, rubber (2)	58152-96
	for Windshield Kit 58692-04	58611-04	13	Screw, hex socket head, chrome 1/4-20 x 1-1/2 inch (2)	94316-91T
5	Tape, windshield brace outer (2)		14	Bushing, collar (2)	58794-96
	for Windshield Kit 57090-00A	57094-00	15	Bushing (4)	58272-95
	for Windshield Kit 57824-00A	57094-00	16	Windshield retainer (left)	58579-96A
	for Windshield Kit 58692-04	58618-04	17	Windshield retainer (right)	58580-96A
6	Tape, windshield brace inner		18	Flat washer, 1/4 inch, silver (2)	6703
	for Windshield Kit 57090-00A	57095-00			
	for Windshield Kit 57824-00A	57095-00			
	for Windshield Kit 58692-04	58631-04			
				<b>NOTE</b> Appearance of actual components may vary from illustration.	



**Figure 5. Service Parts: Windshield, Smoked, Supoer Sport**

**Table 4. Service Parts Table**

Item	Description (Quantity)	Part Number
1	Windshield (sport, smoked)	57735-00A
	Replacement windshield, standard height, clear	57088-00A
	Low profile, smoked	57087-00A
	Standard height, clear with flames	57894-00A
2	Screw, hex socket head, 5/16-24 x 3/4 inch, chrome (4)	94639-99
3	Flat washer, 5/16 inch, chrome (4)	6352
4	Washer, rubber (8)	57964-97
5	Acorn nut, 5/16-24, chrome (4)	94007-90T
6	Windshield bracket (left)	57835-00
7	Windshield bracket (right)	57834-00
8	Screw, hex socket head, chrome 1/4-20 x 1-1/2 inch (2)	94316-91T
9	Bushing, collar (2)	58794-96
10	Bushing (4)	58272-95
11	Windshield retainer (left)	58579-96A
12	Windshield retainer (right)	58580-96A
13	Flat washer, 1/4 inch, silver (2)	6703
14	Acorn nut, 1/4-20, chrome (4)	94004-90T