



INSTRUCTIONS

-J00320

2012-08-08

DETACHABLE WINDSHIELD FOR SOFTAIL MODELS

GENERAL

Kit Number

58243-95, 58278-95, 57688-10

Models

For model fitment information, see the P&A Retail Catalog or the Parts and Accessories section of www.harley-davidson.com (English only).

Additional Parts Required

⚠ WARNING

The rider's safety depends upon the correct installation of this kit. If the procedure is not within your capabilities or you do not have the correct tools, have a Harley-Davidson dealer perform the installation. Improper installation of this kit could result in death or serious injury. (00308a)

Kit Contents

See Figure 2 and Table 1.

INSTALLATION

NOTE

To prevent scratches, cover the headlamp and the front of the fuel tank with a clean cloth and be sure the windshield assembly does not contact chrome or painted parts when removing or installing it.

1. Remove the original equipment windshield, if equipped. Discard the windshield and attaching hardware.
2. See Figure 1. Remove and discard screws and washers securing trim strip (6) to the front and rear trim pieces.
3. Peel protective cover from adhesive side of clear tape. Center tape over front panel trim piece, attach tape to trim piece, wrap tape edges around trim piece and attach to back of trim piece. Leave the protective tape on the trim pieces after kit installation.
4. Install a flat washer (2), bushing (3) and thick washer (4) onto mushroom screw (1), then install the screw into the upper hole of the trim strip (6) and front and rear trim pieces. Do not tighten screw.

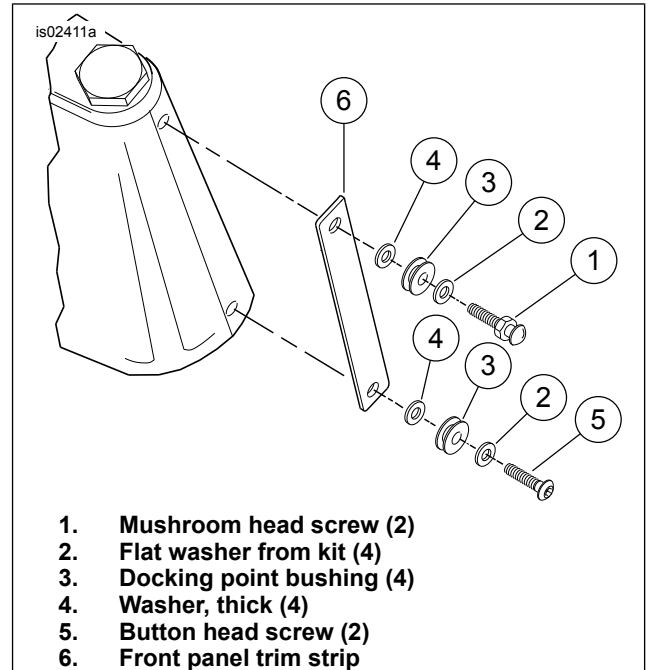


Figure 1. Front Panel Trim Strip and Windshield Dock Installation

5. Install a flat washer (2), bushing (3) and thick washer (4) onto button screw (5), then install the screw into the lower hole of the trim strip (6) and front and rear trim pieces. Tighten screws to 10.8 N·m (96 in-lbs).
6. Repeat procedures 2 - 5 on the opposite side.
7. Lock the bottom windshield assembly jaws into the grooves of the lower rubber docking bushings on each side of the front fork assembly.
8. Hook the top windshield assembly jaws into the grooves of the upper rubber docking bushings.
9. Firmly press the windshield into place until it is seated on the docking bushings.
10. Tighten the upper screws to 10.8 N·m (96 in-lbs).

⚠ WARNING

Improper installation of accessories or loading of cargo can affect motorcycle stability and handling, which could result in death or serious injury. (00455b)

⚠ WARNING

Failure to provide adequate clearance between stationary and moving parts can cause loss of control, which could result in death or serious injury. (00378a)

-J00320

Many Harley-Davidson® Parts & Accessories are made of plastics and metals which can be recycled. Please dispose of materials responsibly.

1 / 3

NOTE

Inspect windshield after installation. Be sure windshield mounting does not restrict full-left or full-right movement of front fork assembly. If restriction does occur, adjust windshield as needed until proper clearance is obtained. Have experienced Harley-Davidson service personnel correct any problems before riding with this accessory installed.

Check mounting hardware periodically. Never ride with loose mounts. A loose mounting causes extra stress on all other mounts and the windshield, and could result in premature failure of components.

REMOVING THE WINDSHIELD

To remove the windshield, hold the windshield edges on each side of the center brace and firmly pull the windshield loose from the bushing grooves.

CARE AND CLEANING

NOTICE

Use only Harley-Davidson recommended products on Harley-Davidson windshields. Do not use harsh chemicals or rain sheeting products, which can cause windshield surface damage, such as dulling or hazing. (00231c)

NOTICE

Polycarbonate windscreens/windshields require proper attention and care to maintain. Failure to maintain polycarbonate properly can result in damage to the windscreen/windshield. (00483d)

SERVICE PARTS

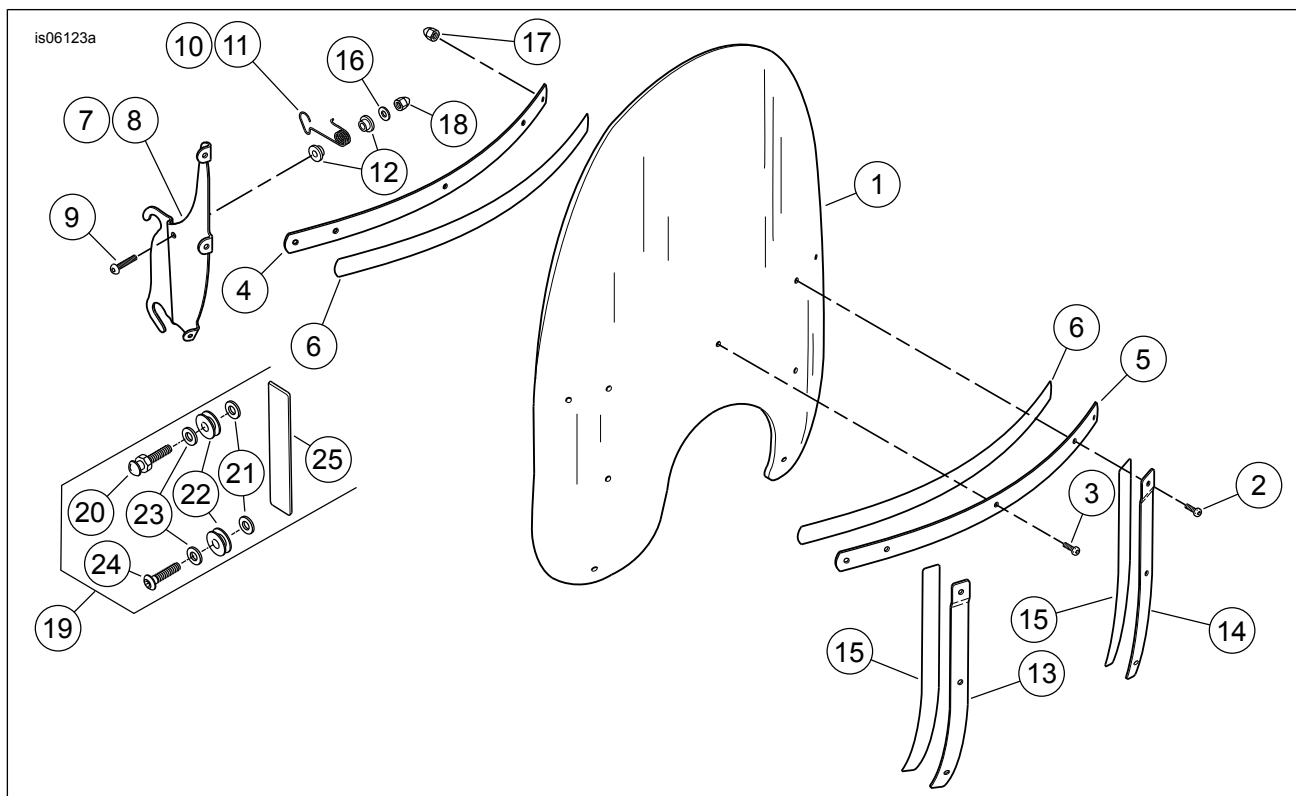


Figure 2. Service Parts for Windshield Kit

Table 1. Service Parts Table

Item	Description (Quantity)	Part Number
1	Windshield (clear)	58241-95
	Windshield (smoke)	58277-95
2	Panhead screws, Torx (2)	2452

- Do not use benzene, paint thinner, gasoline or any other type of harsh cleaner on the windscreen/windshield. Doing so will damage the surface.
- Do not clean polycarbonate in hot sun or high temperature.
- Powdered, abrasive or alkaline cleanser will damage the windscreen/windshield.
- Sunlight reflections off of the inside curvature of a windscreen/windshield can, at certain times of the day, cause extreme heat build-up on motorcycle instruments. Exercise care in parking. Park facing the sun, place an opaque object over the instruments, or adjust the windscreen/windshield to avoid reflections.
- Never scrape the windshield with a razor blade or other sharp instruments because permanent damage will result.
- Do not use benzene, paint thinner, gasoline or any other cleaning agents on the rubber bushings. Doing so will damage the bushing surfaces.

NOTE

Covering the windshield with a clean, wet cloth for about 15 minutes before washing will make dried bug removal easier.

Harley-Davidson Windshield Water Repellent Treatment Part Number 99841-01 is approved for use on Harley-Davidson windshields.

Table 1. Service Parts Table

Item	Description (Quantity)	Part Number
3	Panhead screws, Torx (7)	2921
4	Inner windshield brace	58431-94
	Inner windshield brace (black)	57690-10
5	Outer windshield brace	58428-94
	Outer windshield brace (black)	57689-10
6	Windshield brace tape (2)	58416-77A
7	Windshield bracket, left	58293-95
	Windshield bracket, left (black)	57692-10
8	Windshield bracket, right	58300-95
	Windshield bracket, right (black)	57691-10
9	Buttonhead screws (2)	94426-95
10	Windshield retainer, left	58259-95
11	Windshield retainer, right	58266-95
12	Nylon bushings (4)	58272-95
13	Brace, right	58406-75A
	Brace, right (black)	58045-09
14	Brace, left	58408-75A
	Brace, left (black)	58046-09
15	Windshield brace tape (2)	58417-77
16	Washers, flat, 1/4 in (2)	6703
17	Acorn nuts (9)	7651A
18	Acorn nuts, 1/4-20 (2)	94004-90T
19	Hardware kit, windshield	58595-97
20	• Pin, mounting (2)	58268-95
21	• Washers, flat (4)	6400HB
22	• Bushing (4)	67621-94
23	• Washer, flat (chrome) (4)	94066-90T
24	• Screw, button head (2)	94398-92T
25	• Tape, protective (2)	58290-95