



# INSTRUCTIONS

-J06302

2016-03-04

## XL1200CX WINDSHIELD

### GENERAL

#### Kit Number

57400345

#### Models

For model fitment information, see the P&A retail catalog or the Parts and Accessories section of [www.harley-davidson.com](http://www.harley-davidson.com) (English only).

#### Installation Requirements

##### ▲ WARNING

The rider's safety depends upon the correct installation of this kit. Use the appropriate service manual procedures. If the procedure is not within your capabilities or you do not have the correct tools, have a Harley-Davidson dealer perform the installation. Improper installation of this kit could result in death or serious injury. (00333a)

##### NOTE

This instruction sheet refers to service manual information. A service manual for your year/model motorcycle is required for this installation. One is available from a Harley-Davidson dealer.

#### Kit Contents

See Figure 2 and Table 1.

### INSTALLATION

1. See Figure 2. Remove the windshield sub-assembly (1-7) from packaging. Place face down on a clean, soft surface with mount brackets (3, 4) facing upwards.

##### ▲ WARNING

The cupped side of the Belleville (cone) washers must face each other and sandwich the windshield mount brackets at each mount point. Failure to orient washers correctly can reduce windshield's ability to break away in a collision, which could result in death or serious injury. (00422b)

2. Unpack the hardware kit (9).
  - a. With the cupped sides facing each other, install two Belleville washers (11) onto the threads of one shoulder bolt (10).
  - b. Install the cup washer spacer (12) onto the shoulder bolt threads.
  - c. Repeat with the remaining shoulder bolt, Belleville washers and cup washer spacer.

3. Thread a shoulder bolt and washer assembly (9) into a Quick-Clamp (8), but do not fully tighten now. With the clamp facing outward, align the assembly with the lower notch of one windshield mount bracket (3 or 4). Position a Belleville washer (11) on each side of the windshield mount bracket. Slide the clamp assembly into the notch. Tighten the shoulder bolt (10) finger-tight. Repeat for the other mount bracket.

4. Install the Quick-Clamp (8) perpendicular to the windshield mount bracket, as shown in Figure 2. Align the second Quick-Clamp with the first. Final adjustments are made when attaching the clamps to the vehicle fork tubes. Tighten shoulder bolts (10) to 6.8–8.5 N·m (60–75 in-lbs).

5. Install the upper posts (15) to the windshield mount bracket tabs with screws (6), but do not fully tighten now.

##### NOTE

See service manual instructions. Loosen handlebar-mounted turn signals if present. Rotate up and out of the way to allow Quick-Clamp installation to front forks.

6. Get the handlebar clamps (16), Snap-Mounts (14) and two screws (6) from the kit. See Figure 1. Align the handlebar clamps (1) near the upper (outboard) bends of the vehicle handlebar (2) as shown. Install the clamps to the handlebars with the Snap-Mounts (3) and screws (4), but do not tighten now.

7. With the Quick-Clamps (5) open, bring the windshield assembly (7) to the front of the vehicle. Flex the windshield to position both Quick-Clamps between the fork tubes and the headlamp bracket. Do not close the Quick-Clamps now.

8. Snap ball ends of upper windshield mount posts (6) into Snap-Mounts (3) on handlebar clamps (1):

- a. Press directly above the posts (6) on the windshield face.
- b. A quick "bump" against the windshield snaps the ball ends into the Snap-Mount sockets.

9. Position the windshield:

- a. With the handlebar clamps (1) near the upper (outboard) bends (2) of the handlebar.
- b. With the upper windshield mount posts (6) as close to parallel to the Snap-Mounts (3) as possible.
- c. With the Quick-Clamps (5) as high on the fork tubes as possible. 3.2 mm (0.125 in) from the underside of the upper triple clamp (as shown) is ideal.

-J06302



Many Harley-Davidson® Parts & Accessories are made of plastics and metals which can be recycled. Please dispose of materials responsibly.

1 / 3

10. Tighten the handlebar clamps (1) and screws (4, 8) at both ends of the windshield mount posts (6) to 4.5–5.6 N·m (40–50 in-lbs).
11. Install the trim strip (9) over the edge of the clutch-side windshield mount bracket to protect the clutch cable.
12. See Figure 2. Adjust the orientation of the Quick-Clamps (8) against the Belleville washer (11) resistance so the clamps are perpendicular to the fork tubes.
13. Snap the Quick-Clamp and windshield assembly to the right and left fork tubes.
14. Tighten the shoulder bolts (10) at the windshield mount brackets (3-4) to 4.5–5.6 N·m (40–50 in-lbs).
15. Align and tighten the handlebar-mounted turn signals, if present. See service manual instructions.

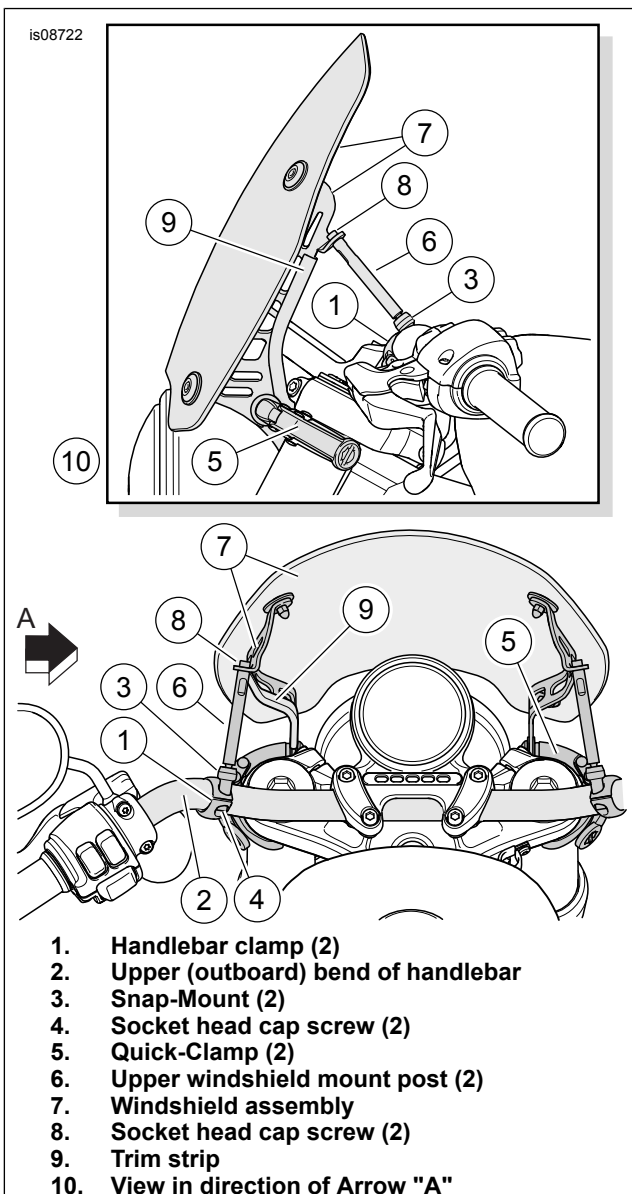


Figure 1. Windshield Clamps to Handlebar and Fork Tubes

## REMOVAL AND RE-INSTALLATION

To remove windshield, reverse **INSTALLATION** steps 6-10 and 12-15.

To install windshield again, perform **INSTALLATION** steps 6-15.

## STORAGE, CARE AND CLEANING

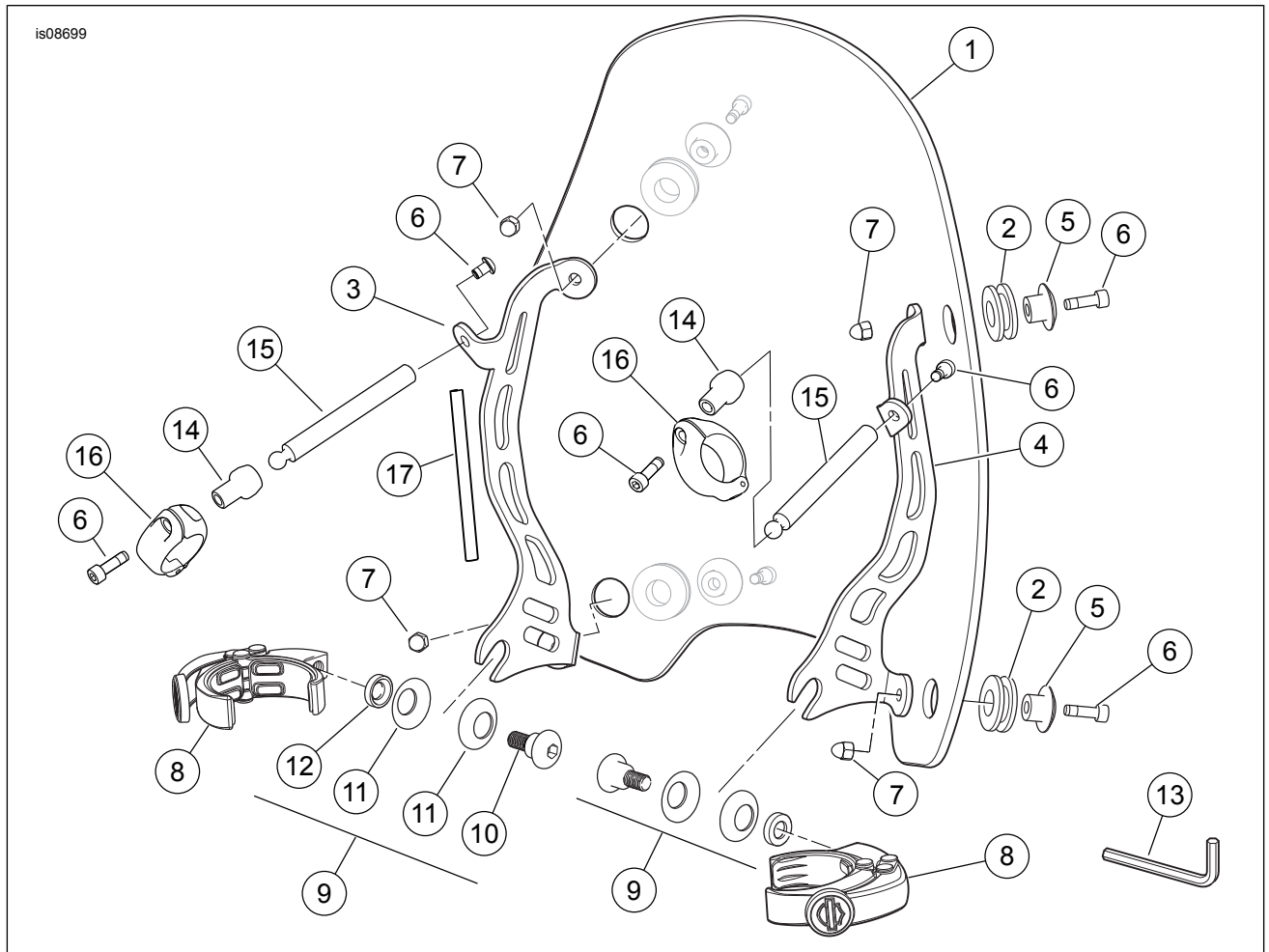
### NOTICE

**Polycarbonate windscreens/windshields require proper attention and care to maintain. Failure to maintain polycarbonate properly can result in damage to the windscreen/windshield. (00483d)**

- Clean the windshield when necessary. Covering the windshield with a clean, wet cloth for about 15 minutes before washing makes dried bug removal easier.
- Do not clean in hot sun or high temperature.
- Do not use benzene, paint thinner, gasoline or any other type of harsh cleaner on the windscreen/windshield. Doing so damages the surface. Do not use benzene, paint thinner, gasoline or any other cleaning agents on the rubber bushings. Doing so damages the bushing surfaces.
- Powdered, abrasive or alkaline cleanser damages the windscreen/windshield.
- Sunlight reflections off the inside curvature of a windscreen/ windshield can, at certain times of the day, cause extreme heat build-up on motorcycle instruments. Exercise care in parking. Park facing the sun, place an opaque object over the instruments, or adjust the windscreen/windshield to avoid reflections.
- When storing windshield, place in a location where windshield clamps receive the greatest protection. Keep from locations where the windshield could be bumped or dropped. Do not stack anything on top of assembly.
- Before reinstallation after any storage period, inspect clamps and hardware for fastener preload and cleanliness. Each clamp must have a pair of rubber gaskets in the clamp saddle that mates to the fork slider. Each clamp must cycle open and closed freely.
- Periodically check fastener tightness. Retighten if necessary.

If you want to use a windshield protectant on your windshield, use Gloss Detailer, available from a Harley-Davidson dealer. See the P&A retail catalog or the Parts and Accessories section of [www.harley-davidson.com](http://www.harley-davidson.com) (English only).

# SERVICE PARTS



**Figure 2. Service Parts, XL1200CX Windshield**

**Table 1. Service Parts**

Item	Description (Quantity)	Part Number
1	Windshield (with grommets)	57400345
2	• Grommet, windshield mount (4)	Not sold separately
3	Bracket, windshield mount (left)	57300130
4	Bracket, windshield mount (right)	57300129
5	Cap, windshield mount (4)	Not sold separately
6	Cap screw, socket head, M5-0.8 x 16 mm long (8)	3080M
7	Acorn nut, M5-0.8 (4)	7154M
8	Quick-Clamp (2)	57287-07
9	Quick-Clamp Hardware Kit (includes items 10-12) (2)	58790-04
10	• Shoulder bolt, button head	Not sold separately
11	• Belleville washer (2)	Not sold separately
12	• Spacer, cup washer	Not sold separately
13	Hex key (Allen wrench), 9mm	94542-09
14	Snap-Mount assembly (2)	Not sold separately
15	Post, upper windshield mount (2)	Not sold separately
16	Handlebar mount (2)	Not sold separately
17	Trim strip	61400497