



INSTRUCTIONS

-J04120

2017-07-27

DETACHABLE WINDSHIELD KITS

GENERAL

Kit Number

57331-07, 57400315

Kit Contents

See Figure 3 and Table 1.

INSTALLATION

▲ WARNING

The rider's safety depends upon the correct installation of this kit. If the procedure is not within your capabilities or you do not have the correct tools, have a Harley-Davidson dealer perform the installation. Improper installation of this kit could result in death or serious injury. (00308a)

NOTE

Cover front fender and front of fuel tank with clean shop towels to prevent scratching. Damage to the finish could result.

Assemble Clamps to Windshield

1. See Figure 1. Remove windshield sub-assembly from packaging and place face down on a clean, soft surface with mount brackets facing upward.
2. See Figure 2. The windshield requires four clamps. The upper two mount locations are slotted in the windshield brackets and the lower two are thru holes. Separate the four clamps, shoulder bolts, cup washers and Belleville washer hardware from their packaging.
3. See Figure 2. Take one shoulder bolt and one Belleville washer. Position the Belleville washer on the shoulder so that the cupped side of the washer is facing away from the bolt head.

▲ WARNING

The cupped side of the Belleville (cone) washers must face each other and sandwich the windshield mount brackets at each mount point. Failure to orient washers correctly can reduce windshield's ability to break away in a collision, which could result in death or serious injury. (00422b)

4. Insert the bolt washer through one of the bracket holes from the inside, center-line of the shield with threads pointing outward.

5. Using another Belleville washer and the machined cup-spacer, position the Belleville washer again with the "cupped" side of the washer facing the windshield bracket sandwiching it and the cup spacer's cup side facing the Belleville washer. The complete stack of components is shown in Figure 2 and should be assembled as shoulder bolt, Belleville washer, bracket, Belleville washer, cup spacer and clamp.
6. Using a 1/4 inch hex wrench, thread the shoulder bolt into one of the clamps with the jaws of the clamp facing upward. Tighten shoulder bolt so clamp remains secure when handled.
7. Assemble second hardware stack complete (position the Belleville washer again with the "cupped" side of the washer facing the windshield bracket sandwiching it and the cup spacer's cup side facing the Belleville washer) as shown in Figure 2. Loosely thread shoulder bolt into clamp. Keep loose enough to spread Belleville washers apart to the width of the bracket.
8. Slip the spread Belleville washers to each side of the slot on the same windshield bracket. Insert the shoulder portion of the bolt all the way to the depth of the slot. Tighten shoulder bolt so clamp remains secure when handled.

NOTE

Before installing the windshield, the top and bottom clamps must be aligned.

9. Repeat the above installation procedures for the opposite bracket clamp positions.

NOTE

Clamps can be rotated a small amount after tightening the shoulder bolt to help final clamp alignment.

10. Using a straight edge placed between the upper clamps along the face of the rubber clamp gasket, align the clamps. Tighten shoulder bolts to 60 in-lbs (6.8 Nm). Repeat alignment procedure for lower clamps and tighten to 60 in-lbs (6.8 Nm).



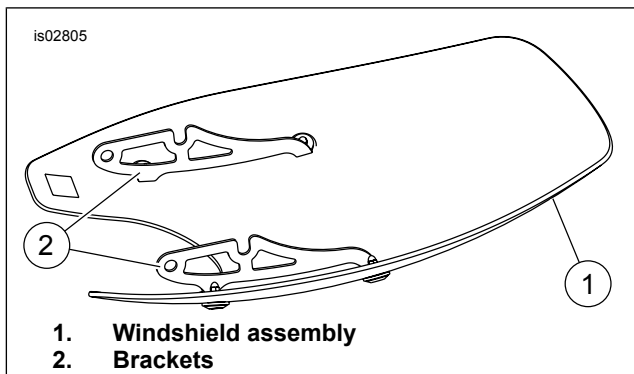


Figure 1. Windshield Mounting Brackets

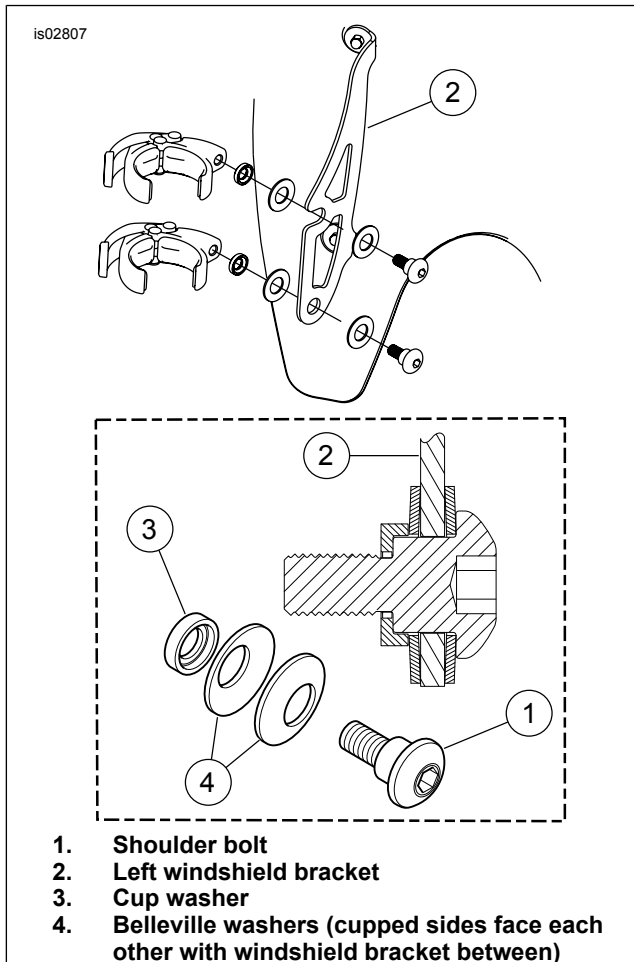


Figure 2. Windshield Mounting Clamp

Install Windshield

On models with removable speed screens, remove speed screen by gently pulling on the speed screen near the barb/grommet attachment points. Store the speed screen.

NOTE

Keep front wheel straight to prevent brackets from scratching fuel tank.

1. Make sure that all four clamps are in the "open" position. Bring windshield (with clamp side away from you) to front of motorcycle.

NOTE

Take care not to scratch the headlamp housing with the clamps while positioning the windshield to the fork sliders.

2. Straddle front fender and center windshield around the headlamp and seat clamps onto fork sliders.
3. Starting at the bottom of either side, close each clamp.

NOTE

If interference occurs, adjust windshield as needed until proper clearance is obtained. Have experienced Harley-Davidson service personnel correct any problems before riding with this accessory installed.

Remove and Store Windshield

To remove windshield, open four clamps, in any sequence, and remove windshield. Take care to not scratch headlamp housing or fuel tank as noted during installation.

When storing windshield, place in a location where windshield clamps will receive the greatest protection. Keep from locations where the windshield may be bumped or dropped. Do not stack anything on top of assembly.

Before installation after any storage period, inspect clamps and hardware for fastener preload and cleanliness. Verify each clamp can be cycled open and closed freely and is free of any debris.

CARE AND CLEANING

NOTE

Sunlight reflections off inside surface of windshield can cause extreme heat build-up on motorcycle instruments. Exercise care in parking. Park facing the sun, place an opaque object over instruments, or adjust windshield to avoid reflections.

NOTICE

Polycarbonate windscreens/windshields require proper attention and care to maintain. Failure to maintain polycarbonate properly can result in damage to the windscreen/windshield. (00483d)

- Do not use benzene, paint thinner, gasoline or any other type of harsh cleaner on the windscreen/windshield. Doing so will damage the surface.
- Do not clean polycarbonate in hot sun or high temperature.
- Powdered, abrasive or alkaline cleanser will damage the windscreen/windshield.
- Sunlight reflections off of the inside curvature of a windscreen/windshield can, at certain times of the day, cause extreme heat build-up on motorcycle instruments. Exercise care in parking. Park facing the sun, place an opaque object over the instruments, or adjust the windscreen/windshield to avoid reflections.
- Never scrape windshield with a razor blade or other sharp instruments or permanent damage will result.
- Do not use benzene, paint thinner, gasoline, lubricants (including Armorall®), or other cleaning agents on rubber bushings or rubber clamp gaskets. They will damage the rubber surfaces.

NOTICE

Use only Harley-Davidson recommended products on Harley-Davidson windshields. Do not use harsh chemicals or rain sheeting products, which can cause windshield surface damage, such as dulling or hazing. (00231c)

NOTE

Covering the windshield with a clean, wet cloth for about 15 minutes before washing makes dried bug removal easier.

SERVICE PARTS

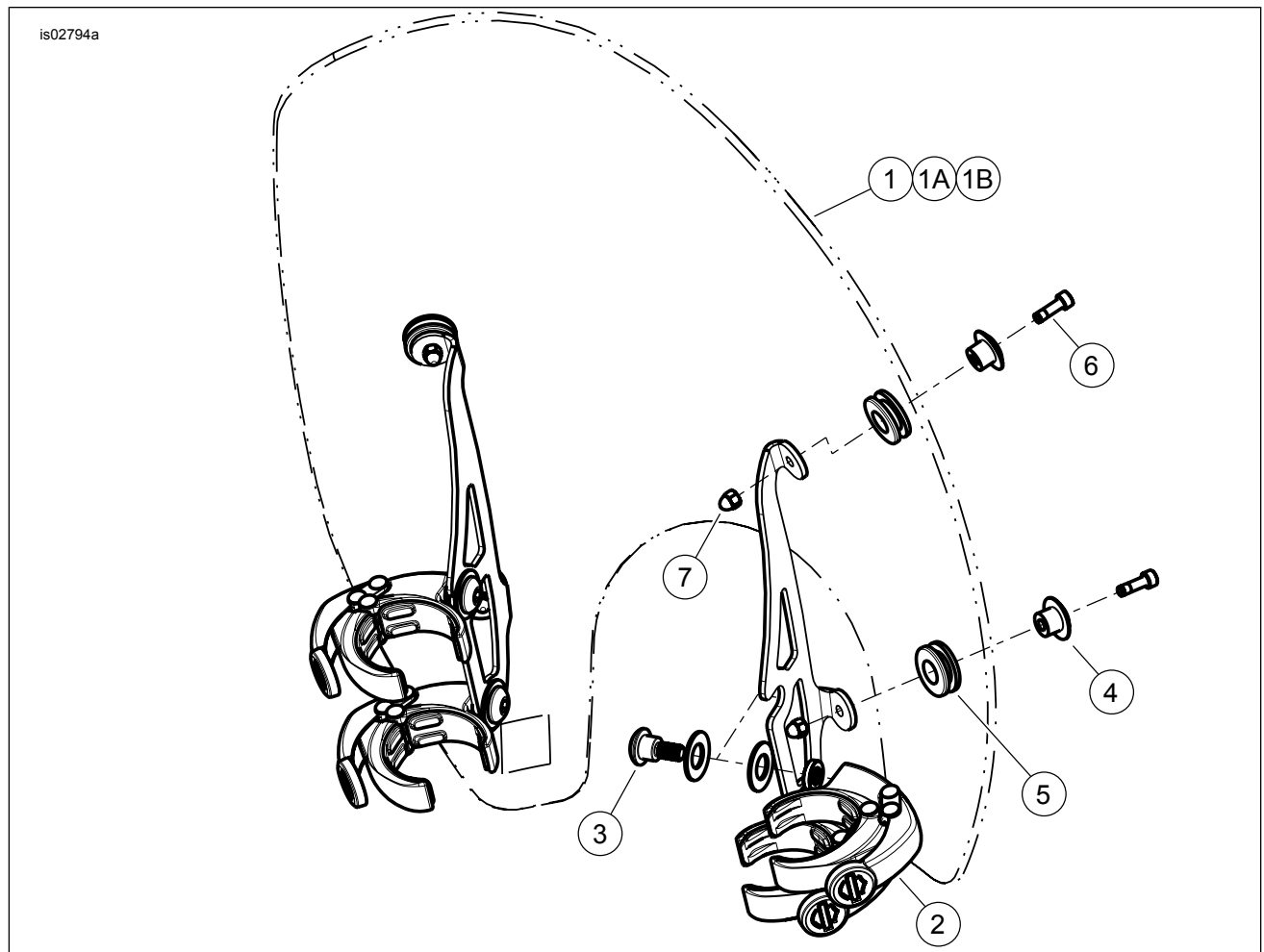


Figure 3. Service Parts: Super Sport Quick-Release Windshield Kit

Table 1. Service Parts Table

Item	Description (Quantity)	Part Number
1	Windshield assembly (includes item 4 thru 7)	Not Sold Separately
1A	Service windshield (replacement for 57331-07)	57332-07
1B	Service windshield (replacement for 57400315)	57400317
2	55 mm quick clamp assembly (4)	57287-07
3	Mounting hardware kit (4)	58790-04
4	Top mount cap (4)	57818-01
5	Grommet (4)	11564
6	Screw, M5 x 0.8 x 16 mm (4)	3080M
7	Nut, acorn, M5 x 0.8 (4)	7154M