



# INSTRUCTIONS

-J05486

2011-06-13

## VRSCDX WINDSHIELD KIT

### GENERAL

#### Kit Number

57400060

#### Models

For model fitment information, see the P&A retail catalog or the Parts and Accessories section of [www.harley-davidson.com](http://www.harley-davidson.com) (English only).

#### Additional Parts Required

Loctite<sup>®</sup> 243 Threadlocker and Sealant - Blue (H-D Part Number 99642-97) is required for the proper installation of this kit.

#### Kit Contents

See Figure 1 and Table 1.

### INSTALLATION

1. See Figure 1. Obtain the windshield assembly (with mount brackets 7 and 8 installed), two quick clamps (1), and two hardware kits (13) from the Windshield Kit.
2. Install two Belleville washers (16) onto the threads of each screw (14) as shown in the inset, so the outer diameters are in contact. Install a cup washer (15) onto each screw, with the cupped side facing the screw head.
3. Thread the screws loosely into the quick clamps, using a 1/4 inch hex key. Insert the slots of the windshield mount brackets between the Belleville washers, and tighten the screws to 7.3 N·m (65 in-lbs), which will still allow orientation adjustments to be made later.
4. Install upper posts (12) using screw (5), grommet (11) and upper mount (18) loosely.
5. Bring the windshield assembly to the front of the vehicle, and flex the shield to position the open quick clamps between the fork tubes and headlamp bracket, but do not clamp at this time. Snap the ball ends of the two windshield mount posts (12) into the snap sockets of the handlebar clamps (1) by pressing directly above the posts on the windshield face. A quick "bump" against the shield will snap the ball ends into the snap sockets. Position the windshield and tighten the clamps and windshield screws to 4.5–5.6 N·m (40–50 in-lbs).

#### NOTE

*Install the windshield to place the clamps as far upward as possible; up to the underside of the upper triple clamp is ideal.*

*If necessary, slightly loosen the screws (5) and rotate the windshield mount posts (12) on the shield to allow a higher clamp location on the fork tubes. Tighten the screws to 4.5–5.6 N·m (40–50 in-lbs).*

6. Adjust the orientation of the quick clamps against the Belleville washer resistance so the clamps are perpendicular to the fork tubes. If the clamps are too loose in the windshield brackets, remove the windshield assembly and tighten the screws (5) to 7.3 N·m (65 in-lbs).

7. Clamp the windshield assembly to the right and left fork tubes.

To remove the windshield, reverse steps 5 through 7.

### CARE AND CLEANING

Check the windshield mounting hardware periodically. Never ride with loose mounts. A loose mount causes extra stress on the remaining mounts, as well as the windshield itself, and could result in premature failure of components.

#### NOTICE

**Polycarbonate windscreens/windshields require proper attention and care to maintain. Failure to maintain polycarbonate properly can result in damage to the windscreen/windshield. (00483d)**

- Sunlight reflections off of the inside curvature of a windshield can, at certain times of the day, cause extreme heat build-up on motorcycle instruments. Park with care. Park facing the sun, place an opaque object over the instruments, or adjust the windshield to avoid reflections.
- Do not clean polycarbonate in hot sun or high temperature.
- Powdered, abrasive or alkaline cleanser will damage the windshield.
- Never scrape the windshield with a razor blade or other sharp instrument, as permanent damage will result.

#### NOTICE

**Use only Harley-Davidson recommended products on Harley-Davidson windshields. Do not use harsh chemicals or rain sheeting products, which can cause windshield surface damage, such as dulling or hazing. (00231c)**

- Do not use benzine, paint thinner, gasoline, lubricants (like Armorall<sup>®</sup>), or other cleaning agents on the rubber bushings. Doing so will damage the bushing surfaces.

#### NOTE

*Covering the windshield with a clean, wet cloth for about 15 minutes before washing will make dried bug removal easier.*



# SERVICE PARTS

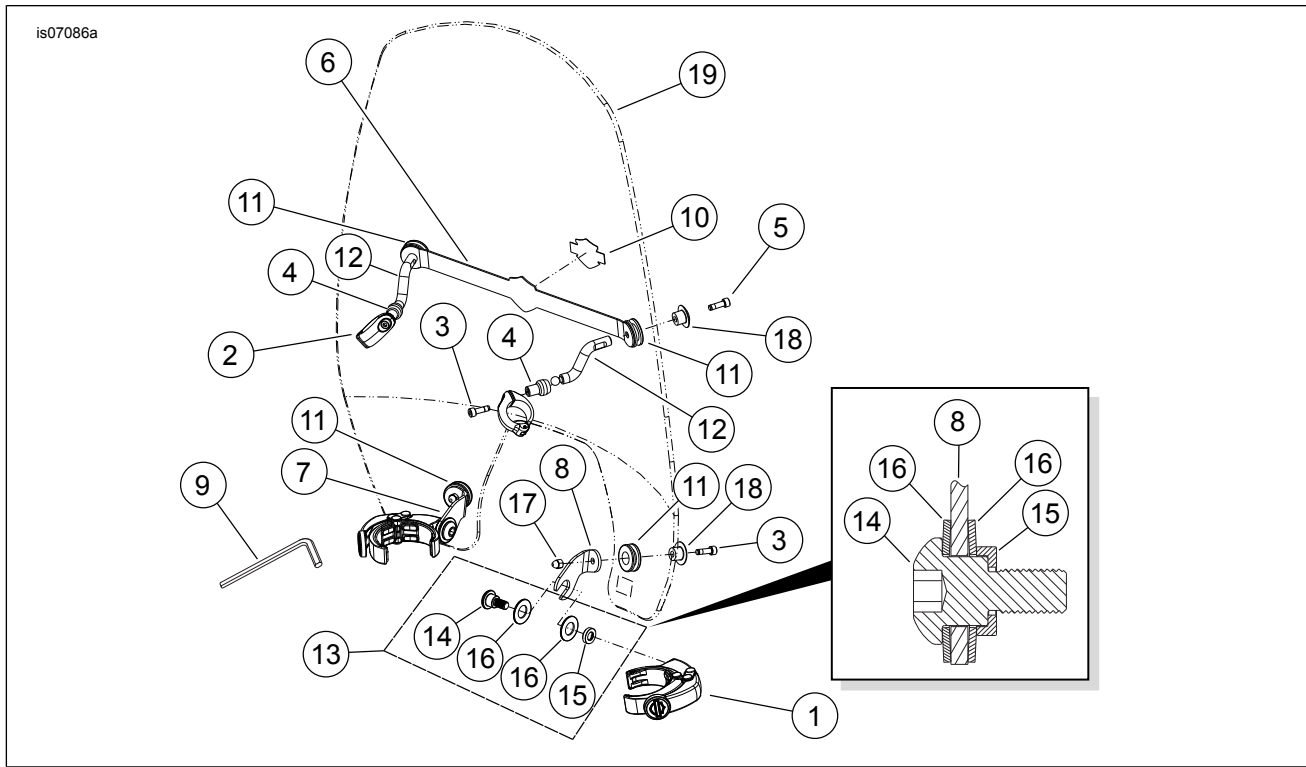


Figure 1. Service Parts: VRSCDX Windshield

Table 1. Service Parts Table

Item	Description (Quantity)	Part Number
1	Quick clamp assembly, 55mm windshield mount (2)	57287-07
2	Handlebar clamp, windshield mount (2)	Not Sold Separately
3	Socket head screw, M5 x 0.8, 16mm long (4)	3080M
4	Snap mount assembly	Not Sold Separately
5	Screw, socket head cap, M5 x 0.8 20mm long (2)	4475M
6	Brace, windshield	Not sold separately
7	Bracket, windshield mount, left	Not Sold Separately
8	Bracket, windshield mount, right	Not sold separately
9	Allen wrench, 9mm	94542-09
10	Bar and Shield logo	Not Sold Separately
11	Grommet upper windshield (4)	11564
12	Post, upper windshield mount (2)	Not Sold Separately
13	Hardware kit, windshield (includes items 13 through 15) (2)	58790-04
14	• Shoulder bolt	Not sold separately
15	• Spacer, cup washer (2)	Not sold separately
16	• Washer (2)	Not sold separately
18	Windshield, front top mount (4)	57818-01
19	Windshield, super sport detachable	Not Sold Separately