



# INSTRUCTIONS

-J03581

REV. 12-10-2004

Kit Numbers 57213-06

## MIDSPORT WINDSHIELD KIT

### General

These kits are designed to fit 2006 and later VRSCR model motorcycles.

See the Service Parts illustration for kit contents.

#### NOTE

A Service Manual for your model motorcycle is available for purchase at your Harley Davidson Dealer.

### Installation

1. See the Service Parts illustration. Obtain a clamp rod (12), handlebar clamp (9) and screw (7) from the kit.

#### NOTE

When performing the following step, make a note of rod ball end location and orientation in Figure 1. The resulting clamp location on the handlebars may need to be adjusted later in the installation.

2. See Figure 1. Install the handlebar clamp (1) (oriented as shown) around one side of the handlebar. Install flat end of clamp rod (2) (oriented as shown) into hole in handlebar clamp and install screw (3) into clamp rod tightening just enough to hold clamp in place. Repeat this step for the opposite side of the handlebar.
3. See Figure 2. While supporting headlamp bracket (2), remove the two upper headlight mounting bracket screws (1) and discard.
4. See Service Parts illustration. Obtain the front leave-on (2) and two screws (8) from kit.

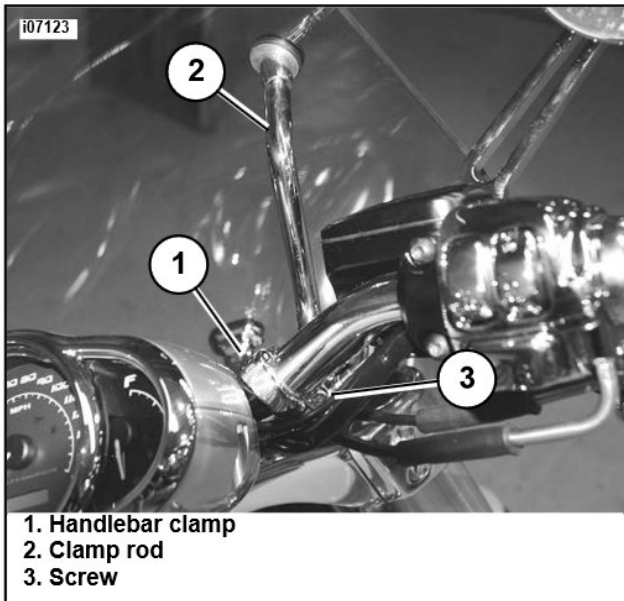
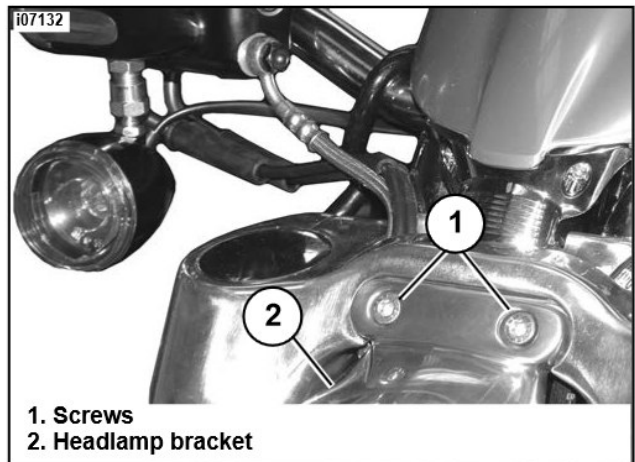


Figure 1. Install Handlebar Mounting Hardware



1. Screws
2. Headlamp bracket

Figure 2. Remove Upper Headlight Bracket Screws

5. See Figure 3. Orient leave-on (1) over the upper headlight mounting bracket and using the two screws (2), install the leave-on to the upper triple fork. Tighten screws to 11–18 Nm (8.1–13.2 ft-lbs).

#### NOTE

The windshield snap mounts and pivot mount are pre-installed to the windshield.

6. See Service Parts illustration. Obtain pivot bracket mounting screw (7) and windshield assembly (1) from kit.
7. See Figure 3. Align the lower pivot bracket mount (3) with the bottom hole in leave-on (1) and secure the mount using screw. Rock the windshield from side to side to confirm the the pivot mount is securely fastened to the leave-on and tighten to 7.4 ft-lbs (10 Nm).

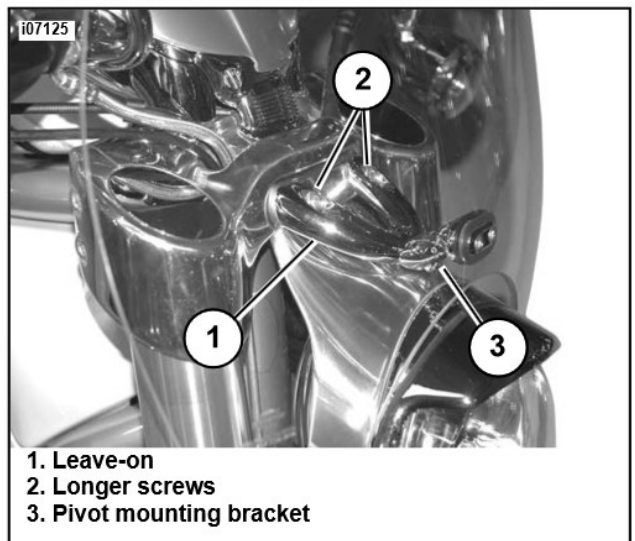


Figure 3. Install Leave-On

**NOTE**

Prior to performing the next step, it will be necessary to hold the windshield in place and correctly position the windshield snap mounts with the handlebar clamp mounts (and rods). Adjust the snap mounts and clamp mounts as necessary until windshield is centered and clamp rods snap easily, but securely, into windshield snap mounts.

8. See Figure 1. Align the windshield snap mounts with each of the clamp rods (mounted to handlebars) and gently push until both mounts “snap”, holding windshield in position. Inspect windshield assembly for proper alignment and make sure it is centered. If necessary, loosen related hardware and adjust, then retighten.

**CAUTION**

When performing the following step, do **NOT** overtighten the handlebar clamps. Overtightening could damage clamps and result in inability to properly secure windshield.

**NOTE**

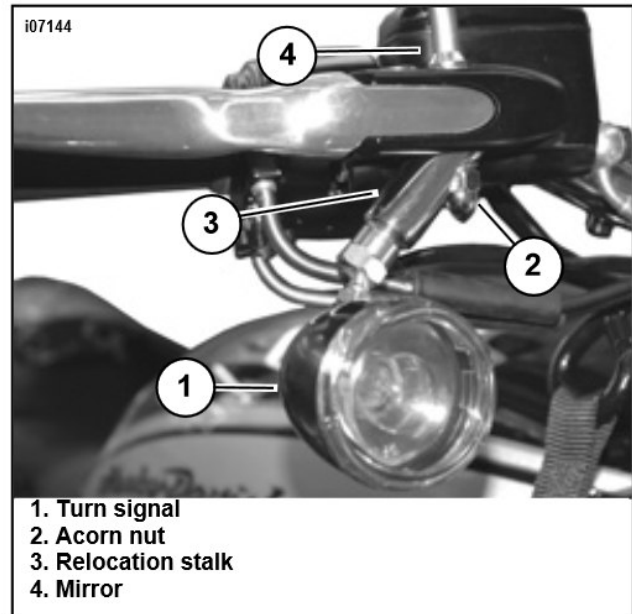
If this is a re-installation of the handlebar clamp fasteners, the lock patch may have reduced effectivity. Apply Loctite 243 (blue) to last 4 threads (opposite fastener head) on clamp fasteners prior to final torquing.

9. Return to handlebar clamp mounts and tighten to 7.4 ft-lbs (10 Nm).

**NOTE**

Refer to Figure 4 for Steps 10–13.

10. Unthread mirror (4) from front turn signal assembly (1). Save star washer for reinstallation.
11. Remove turn signal retaining nut (the nut removed from the mirror stem) from turn signal assembly (1) and discard.



**Figure 4. Install Leave-On**

**NOTE**

The two relocation stalks from the kit are each unique. Use the relocation stalk with the notch on the front brake side.

12. Thread the relocation stalk (3) from the kit onto the turn signal assembly (1), roughly orienting the turn signal as shown.
13. Install turn signal assembly (1) with the relocation stalk (3) onto the mirror (4) using an acorn nut (2) from the kit, and the star washer saved from Step 10. Orient the turn signal facing forward as shown, and tighten the acorn nut and the signal mount socket.
14. Repeat Steps 10–13 for opposite front turn signal assembly.



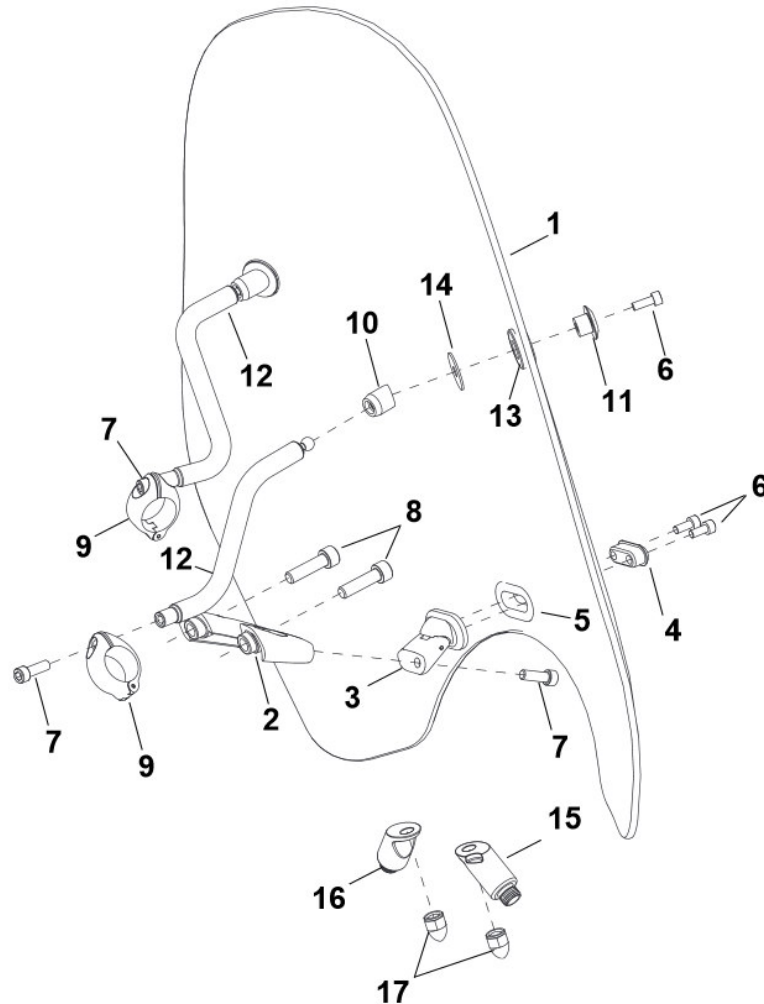
# Service Parts

Part Numbers 57213-06

Date 12/04

## Midsport Windshield Kit

i07092



Item	Description (Quantity)	Part Number
1	Windshield, midsport	57924-06
2	Leave-on, front	57786-01
3	Pivot mount assembly, front leave-on	57784-01
4	Cap, lower front mount	57795-01
5	Grommet, lower front mount	57848-01
6	Screw, socket head, M5x0.8X14 mm (4)	4476M
7	Screw, socket head, M6x1.0X20 mm (3)	4252M
8	Screw, socket head, M8x1.25X30 mm (2)	4235M
9	Clamp assembly, handlebar mount (2)	57788-01
10	Socket, snap-mount assembly (2)	57891-05
11	Cap, upper front mount (2)	57818-01
12	Rod, upper windshield mount (2)	57232-06
13	Grommet, upper windshield mount (2)	11564
14	Washer, flat (2)	6867
15	Stalk, front turn signal relocation, right	69436-06
16	Stalk, front turn signal relocation, left	69437-06
17	Nut, acorn, chrome, 5/16-24 in. (2)	7736