



INSTRUCTIONS

-J03317

2012-01-10

VRSC QUICK RELEASE DETACHABLE WINDSHIELD KIT

GENERAL

Kit Number

57211-05, 57177-05

Models

These kits fit 2002 and later VRSCA (V-Rod®) models and 2004 and later VRSCB models.

Table 1. Models

Kits	Contents
57211-05	Touring, clear windshield
57177-05	Super Touring, clear windshield

Additional Parts Required

▲ WARNING

The rider's safety depends upon the correct installation of this kit. Use the appropriate service manual procedures. If the procedure is not within your capabilities or you do not have the correct tools, have a Harley-Davidson dealer perform the installation. Improper installation of this kit could result in death or serious injury. (00333a)

NOTE

This instruction sheet references Service Manual information. A Service Manual for your model motorcycle is available from a Harley-Davidson dealer.

Kit Contents

See Figure 4 and Table 2.

INSTALLATION

Prepare the Motorcycle

▲ WARNING

To prevent accidental vehicle start-up, which could cause death or serious injury, disconnect battery cables (negative (-) cable first) before proceeding. (00307a)

▲ WARNING

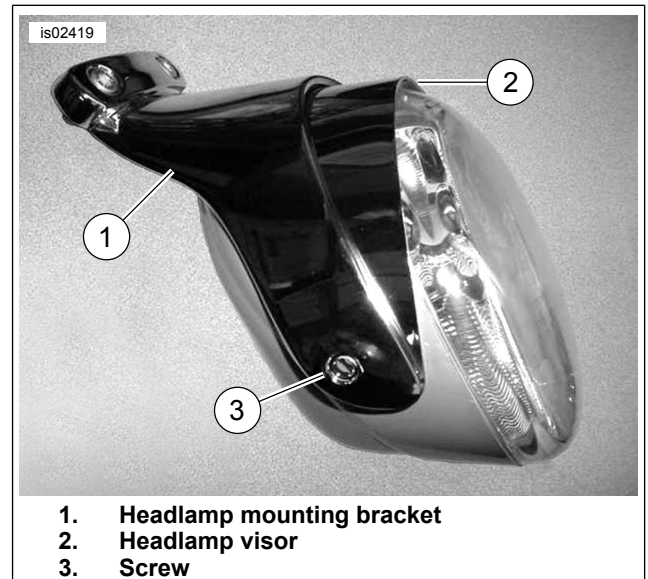
Disconnect negative (-) battery cable first. If positive (+) cable should contact ground with negative (-) cable connected, the resulting sparks can cause a battery explosion, which could result in death or serious injury. (00049a)

1. Remove the 40 amp Maxi-Fuse or disconnect the battery cables, negative cable first.

NOTE

The low beam headlamp bulb (labeled H11) mounts in the top hole in the rear of the headlamp assembly. The high beam bulb (labeled H9) mounts in the bottom hole.

2. Relocate the turn signals and their wiring according to the instructions included in the Turn Signal Relocation Kit, Harley-Davidson Part Number 57205-05. VRSCB models proceed to Step 4.



1. Headlamp mounting bracket
2. Headlamp visor
3. Screw

Figure 1. Headlamp with New Visor

NOTICE

Never touch the quartz bulb. Fingerprints will etch the glass and decrease bulb life. Handle the bulb with paper or a clean, dry cloth. Failure to do so could result in bulb damage. (00210b)

3. For VRSCA models, install the headlamp visor and bulbs as follows:
 - a. See Figure 4. Obtain Headlamp Visor (16) from kit. See Figure 1. Remove the two screws (3) securing the headlamp (1) to the headlamp mounting bracket. Install headlamp visor over the headlamp (oriented as shown in Figure 4) and secure headlamp with visor to headlamp bracket using two screws.
 - b. Using two mounting screws, align and install headlamp bracket to upper triple clamp. Tighten screws to 11–18 N·m (8–13 ft-lbs).
 - c. Gently install each of the headlamp bulbs to back of headlamp and twist approximately 45 degrees clockwise to secure.

- d. Follow the instructions in the Service Manual to adjust the headlamp for proper visibility.

4. Refer to the Service Manual and follow the instructions given to re-connect the Maxi-Fuse.

▲ WARNING

Be sure that all lights and switches operate properly before operating motorcycle. Low visibility of rider can result in death or serious injury. (00316a)

5. Check the turn signals for proper operation.

Assemble the Clamps to the Windshield

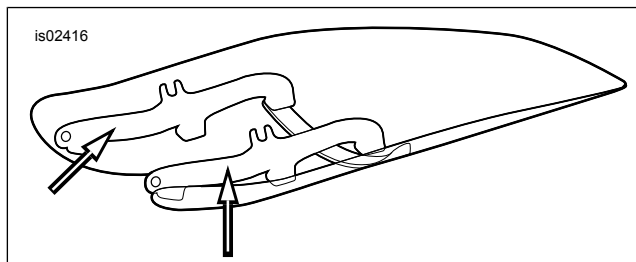
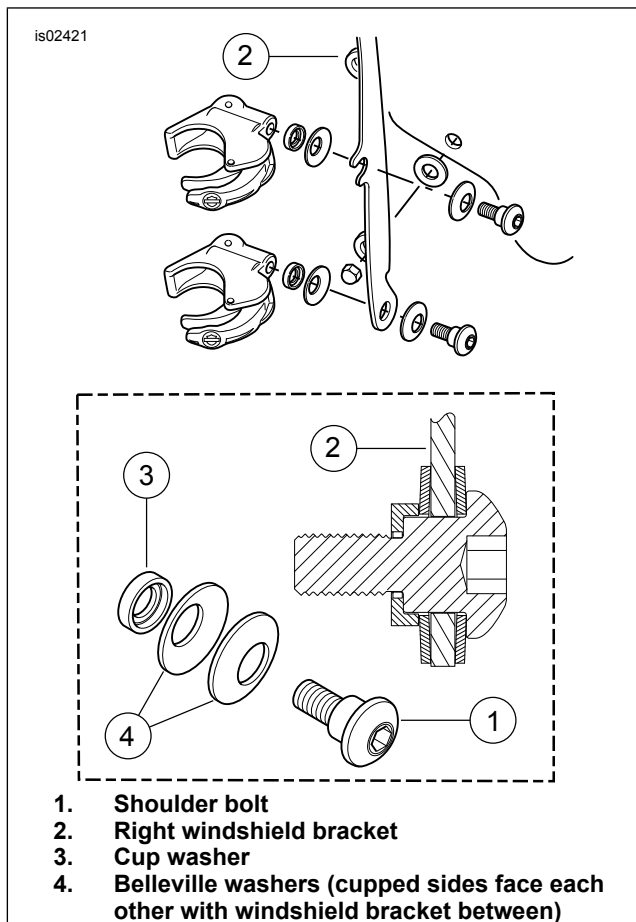


Figure 2. Windshield Mounting Brackets

1. See Figure 2. Remove the windshield sub-assembly from the packaging and place face down on a clean, soft surface with the mount brackets facing upward.
2. See the Figure 4. Remove both the clamp and hardware kits from the packaging, and separate similar parts in preparation for assembly.



1. Shoulder bolt
2. Right windshield bracket
3. Cup washer
4. Belleville washers (cupped sides face each other with windshield bracket between)

Figure 3. Windshield Mounting Clamp

3. See Figure 3. Assemble the clamp assemblies and hardware stacks.

▲ WARNING

The cupped side of the Belleville (cone) washers must face each other and sandwich the windshield mount brackets at each mount point. Failure to orient washers correctly can reduce windshield's ability to break away in a collision, which could result in death or serious injury. (00422b)

4. See Figure 3. One clamp at a time, with the clamp facing upward and inboard of the windshield bracket (2), tighten the shoulder bolts (1) enough to hold the clamp orientation to the windshield during mounting of the windshield to the bike. The bolts will be fully tightened later.

Install the Windshield

NOTE

Keep front wheel straight to prevent brackets from scratching fuel tank.

NOTE

The Lexan® windshield is fairly flexible and can be bent to spread the clamps away from the headlamp to ease installation to the bike. Take care not to scratch the headlamp housing with the clamps while positioning the windshield to the fork sliders.

1. Make sure all four clamps are in the "open" position, then bring the windshield (with the clamp side away from you) to the front of the bike.
2. Straddle the front fender. Center the windshield around the headlamp and seat the clamps onto the fork sliders.

NOTE

Do not tighten the shoulder bolts beyond the recommended torque. Over-torquing may cause the clamp to twist on the fork slider, yielding the clamp jaw. A yielded clamp may not carry a preload on the fork slider and cause the windshield to come loose during use. A loose or rattling windshield may cause rider distraction.

3. Starting at the bottom (either side) and with the shoulder bolts just a little more than finger tight, close each clamp, taking note that the clamps self-align to the fork sliders and to each other.

NOTICE

Do not exceed recommended torque when installing mounting screws. Damage to windshield can result. (00385a)

4. With the windshield clamps now clamped to the fork sliders, make sure that the shoulder portion of the shoulder bolts are fully seated in each windshield bracket location. Tighten each shoulder bolt to 6.7 N·m (60 in-lbs).
5. Turn the handlebars fully to the left and right fork stops to confirm that movement is not restricted.

▲ WARNING

Improper installation of accessories or loading of cargo can affect motorcycle stability and handling, which could result in death or serious injury. (00455b)

▲ WARNING

Failure to provide adequate clearance between stationary and moving parts can cause loss of control, which could result in death or serious injury. (00378a)

NOTE

Inspect windshield upon completion of installation. Be sure windshield mounting does not restrict full left or full right movement of front fork assembly. If restriction does occur, adjust windshield as needed until proper clearance is obtained. Have experienced Harley-Davidson service personnel correct any problems before riding with this accessory installed.

NOTE

Check mounting hardware periodically. Never ride with loose mounts. A loose mounting causes extra stress on all other mounts, as well as the windshield itself, and could result in premature failure of components.

Removing the Windshield

To remove the windshield, open the four clamps in any sequence. Take care to not scratch the headlamp housing or any painted parts as noted during installation.

When storing the windshield, place in a location where the windshield clamps will receive the greatest protection. Keep from locations where the windshield may be impacted or dropped. Do not stack anything on top of the assembly.

Prior to re-installation after any storage period, inspect the clamps and hardware for fastener and cleanliness. Each clamp should have a pair of rubber gaskets in the clamp saddle that mates to the fork slider, and should cycle open and closed freely.

CARE AND CLEANING

NOTE

Sunlight reflections off of the inside curvature of a windshield can, at certain times of the day, cause extreme heat build-up on motorcycle instruments. Exercise care in parking. Park facing the sun, place an opaque object over the instruments, or adjust the windshield to avoid reflections.

NOTICE

Polycarbonate windscreens/windshields require proper attention and care to maintain. Failure to maintain polycarbonate properly can result in damage to the windscreen/windshield. (00483d)

NOTICE

Use only Harley-Davidson recommended products on Harley-Davidson windshields. Do not use harsh chemicals or rain sheeting products, which can cause windshield surface damage, such as dulling or hazing. (00231c)

NOTICE

Use only Harley-Davidson recommended products on Harley-Davidson windshields. Do not use harsh chemicals or rain sheeting products, which can cause windshield surface damage, such as dulling or hazing. (00231c)

Do not clean Lexan[®] polycarbonate in hot sun or high temperature. Powdered, abrasive or alkaline cleanser will damage the windshield. Never scrape the windshield with a razor blade or other sharp instruments because permanent damage will result.

NOTE

Covering the windshield with a clean, wet cloth for about 15 minutes before washing will make dried bug removal easier.

Harley-Davidson Windshield Water Repellent Treatment Part Number 99841-01 is approved for use on Harley-Davidson Lexan[®] windshields.

SERVICE PARTS

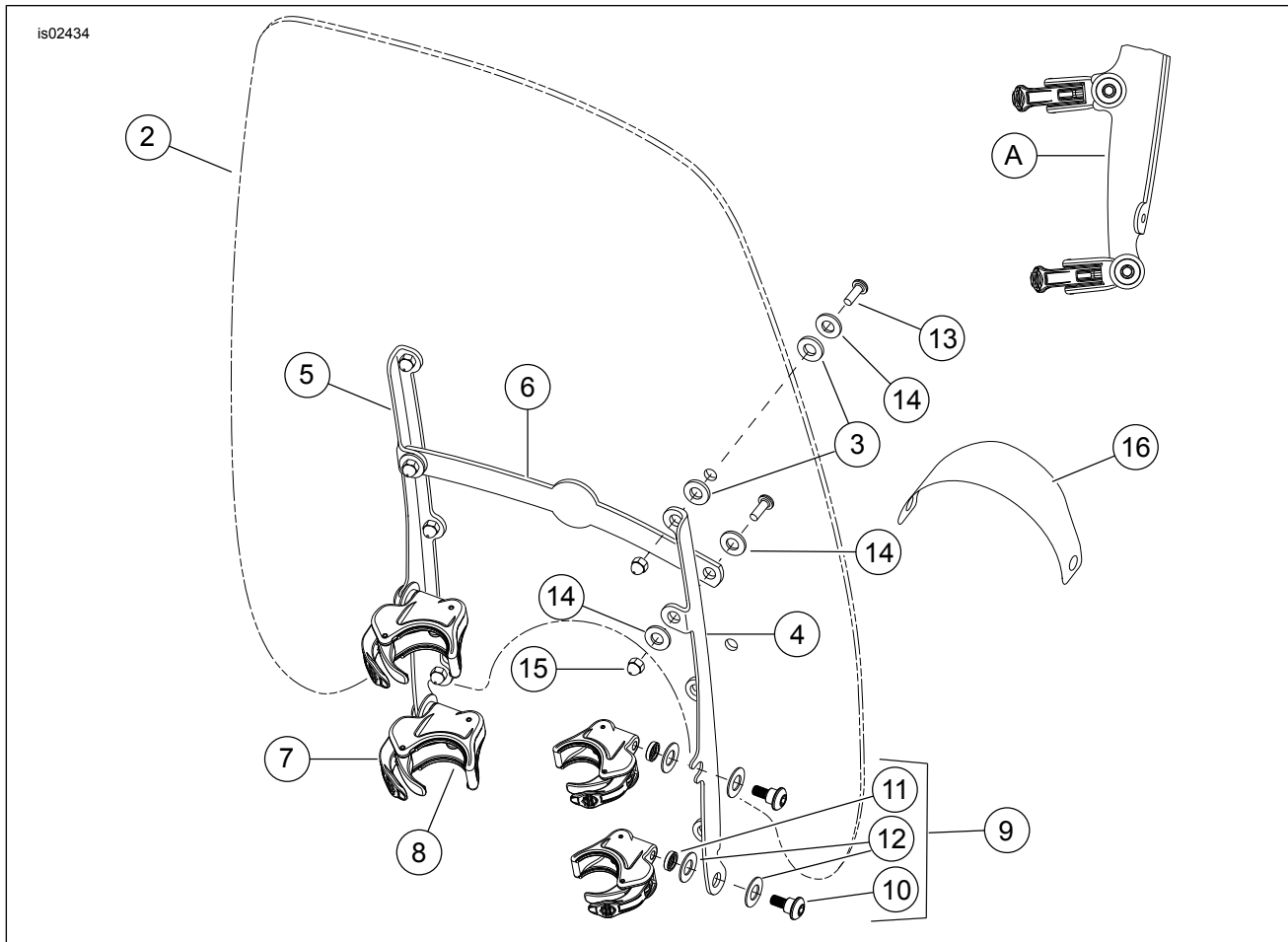


Figure 4. Service Parts: VRSC Quick Release Windshield Kits

Table 2. Service Parts Table

Item	Description (Quantity)	Part Number	Item	Description (Quantity)	Part Number
1	Windshield service kit (includes items 2 through 3)		10	Shoulder screw, button head	Not Sold
	Touring, clear windshield	57233-05	11	Spacer, cup washer	Not Sold
	Super touring, clear	57179-05	12	Belleville washer (2)	Not Sold
2	Windshield	Not sold	13	Screw, button head, Torx, with lock patch, 5/16-24 x 3/4 inch (8)	94639-99
3	Washer, rubber, black (12)	57964-97	14	Washer (10)	6352
4	Bracket, windshield mount, right	57189-05	15	Acorn nut, 5/16-24 (chrome) (8)	94007-90T
5	Bracket, windshield mount, left	57190-05	16	Visor, headlamp	69200-01
6	Bracket, center horizontal	57210-05	17	Turn signal relocation kit (not shown) See instructions provided in kit for kit contents.	57205-05
7	Clamp assembly, tool-less release (4) (includes two of item 8)	57192-05A	A	Side View of Clamps Assembled to Bracket	
8	Gasket (8 - 2 per clamp)	57197-05	NOTE: Appearance of actual components may vary from illustration.		
9	Hardware kit, windshield mount (4) (includes items 10 through 12)	58790-04			