



# INSTRUCTIONS

-J04274

REV. 2006-12-19

## TALL HANDLEBAR KIT

### GENERAL

#### Kit Number

56964-07

#### Models

Ask a Harley-Davidson dealer or refer to the latest Harley-Davidson Genuine Motor Accessories and Genuine Motor Parts catalog to determine if this handlebar can be installed on your motorcycle.

#### Additional Parts Required

**Separate purchase** of additional parts or accessories may be required for proper installation of this handlebar kit on your model motorcycle. Refer to the latest Harley-Davidson Genuine Motor Accessories and Genuine Motor Parts catalog for a list of required parts or accessories for your model.

Motorcycles equipped with a **glued** left-side hand grip will also require a new grip, sold separately. Refer to the Parts Catalog for replacement stock hand grips.

Ask a Harley-Davidson dealer about the selection of Genuine Motor Accessory hand grips that are available.

### **⚠ WARNING**

**The rider's safety depends upon the correct installation of this kit. Use the appropriate service manual procedures. If the procedure is not within your capabilities or you do not have the correct tools, have a Harley-Davidson dealer perform the installation. Improper installation of this kit could result in death or serious injury. (00333a)**

#### NOTE

*This instruction sheet references Service Manual information. A Service Manual for your model motorcycle is required for this installation and is available from a Harley-Davidson Dealer.*

#### Tools and Supplies Required

Fresh, uncontaminated brake fluid will be needed. Refer to your Owner's Manual or the Service Manual for this year and model motorcycle to determine the correct brake fluid for this vehicle.

A long shank ball-end socket (Snap-on®FABL6E or equivalent) will also be needed to remove and install the radio or storage box.

#### Kit Contents

See Figure 2 and Table 1.

### INSTALLATION

#### Preparation

##### Models WITH maxi-fuse:

### **⚠ WARNING**

**To prevent accidental vehicle start-up, which could cause death or serious injury, remove maxi-fuse before proceeding. (00251a)**

1. Refer to the Service Manual and follow the instructions given to remove the maxi-fuse.

##### Models WITHOUT maxi-fuse:

### **⚠ WARNING**

**To prevent accidental vehicle start-up, which could cause death or serious injury, disconnect negative (-) battery cable before proceeding. (00048a)**

1. Refer to the Service Manual and follow the instructions given to remove the seat and disconnect the negative (black) battery cable from the negative (-) battery terminal. Retain all seat mounting hardware.
2. Remove the outer fairing. See UPPER FAIRING/WINDSHIELD (FLHX, FLHT/C/U), OUTER FAIRING/WINDSHIELD, REMOVAL in the Service Manual.  
Remove the fairing cap. See UPPER FAIRING/WINDSHIELD; FAIRING CAP: REMOVAL in the Service Manual.
3. Bleed the brake fluid from the front brakes per the instructions in the Service Manual.

#### Original Handlebar Removal

##### NOTE

*Cover the front fender and the front of the fuel tank with clean shop towels to prevent scratching. Damage to the finish could result.*

1. **Models WITH radio:** Remove the radio. See RADIO: REMOVAL in the Service Manual.

##### Models WITHOUT radio: Remove the storage box.

- a. The four socket head screws fastening the storage box to the left and right radio support brackets can be accessed through the oblong holes in the fairing brackets. Use a long shank ball-end socket to remove the screws.
- b. Pull the storage box forward to remove it from the opening in the inner fairing.

### **CAUTION**

**Remove brake line components carefully. Damage to seating surfaces can cause leakage. (00320a)**

2. Disconnect the front brake lines from the vehicle. See FRONT BRAKE MASTER CYLINDER, FRONT BRAKE LINE, REMOVAL, FLHX, FLHT/C/U in the Service Manual.

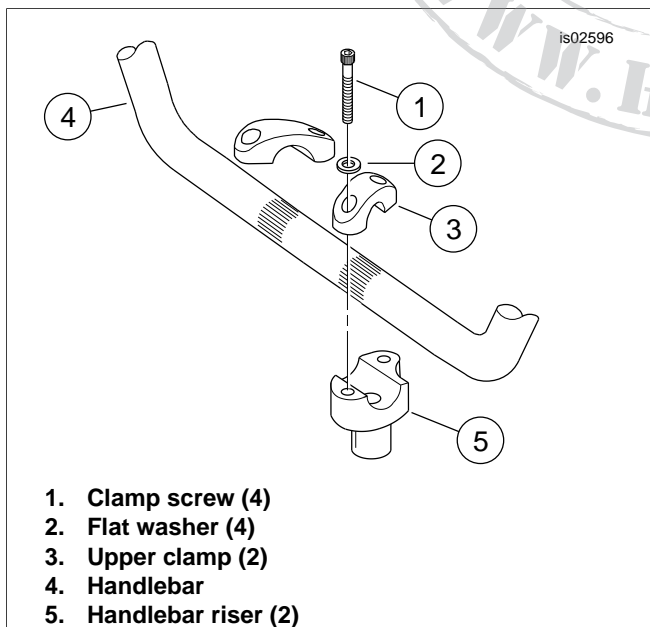
3. Using a T-40 TORX® drive head, remove and retain the button head screw on the underside of the fork stem and bracket assembly that holds the brake line manifold tee.
4. Remove the old front brake lines from the motorcycle.
5. Using a T-27 TORX drive head, remove the front-brake master cylinder and clutch-lever assemblies from the handlebar.
6. Refer to CLUTCH HAND CONTROL, REMOVAL in the Service Manual, and follow the instructions to disconnect the clutch cable from the clutch lever.  
Disconnect the clutch cable from the side cover, and remove the cable from the vehicle.

**NOTE**

Molex connectors are used for the handlebar control wiring on 2007 and later models. 2006 and earlier vehicles use Deutsch connectors. Refer to the MOLEX ELECTRICAL CONNECTORS or DEUTSCH ELECTRICAL CONNECTORS section of the Service Manual for disconnection and re-connection procedures.

Before disconnecting the handlebar control wiring, note the wire routing.

7. Disconnect the handlebar control wiring from the gray and black 6-way main harness connectors inside the fairing. Disconnect the electronic cruise-control wiring from the two 4-way connectors if so equipped.
8. Refer to the HANDLEBAR SWITCHES, RIGHT HANDLEBAR CONTROLS section of the Service Manual for removal of the right-side switch housing assembly and harness. This is necessary to access the throttle cables.
9. Refer to the THROTTLE CABLES section of the Service Manual to disconnect the throttle cables from the existing right grip/throttle sleeve assembly, and the carburetor or induction module. Remove the throttle cables from the vehicle.
10. Refer to the LEFT HANDLEBAR CONTROLS section of the Service Manual for removal of the left-side switch housing assembly and wire harness.



**Figure 1. Handlebar Clamps and Risers**

11. See Figure 1. Remove and retain the screws (1) and flat washers (2) that fasten the handlebar upper clamps (3) to the risers (5). Remove and retain the clamps. Remove the handlebar (4) from the motorcycle.
12. **If the left-side hand grip is not glued to the handlebar:** Remove the hand grip and set it aside for installation to the new handlebar.

**NOTES**

2007 and later models use Molex connectors. 2006 and earlier vehicles use Deutsch connectors. Refer to MOLEX or DEUTSCH ELECTRICAL CONNECTORS in the Service Manual for terminal removal and re-installation procedures.

DO NOT remove the wires from the Molex or Deutsch handlebar switch connector **pin housings** inside the fairing.

13. Note the wire colors and positions in each cavity of the **socket housings** leading from the switches. Refer to the wiring diagram and the ELECTRICAL CONNECTORS section in the Service Manual. Remove the wires from the socket housings.

**New Handlebar Installation**

1. See Figure 2. Obtain the rubber sleeve (2) from the kit. Cut the sleeve into two equal lengths. Slide a section of the sleeve onto each of the switch-wire bundles, positioning the sleeve close to the switch end.
2. Center the new handlebar on the risers. To make sure that the handlebar is centered, verify that the knurled areas on the outboard side of each riser are equal.
3. Position the original equipment handlebar upper clamps, and install with the clamp screws and flat washers saved earlier. Snug the screws, but do not fully tighten.

**CAUTION**

**Improperly aligned handlebars can contact the fuel tank when turned to the left or right. Contact with the fuel tank can cause cosmetic damage. (00372a)**

4. Slowly turn the front wheel to the full right fork stop and then the full left fork stop to be sure the handlebar does not contact the fuel tank. If contact occurs and the handlebars are properly centered, raise the handlebar angle as necessary until proper clearance is obtained.
5. Tighten the upper handlebar-clamp screws as follows:
  - a. Tighten the front screws until the upper handlebar clamps make contact with the handlebar riser.
  - b. Tighten the rear screws to 12-16 ft-lbs (16.3-21.7 Nm).
  - c. Tighten the front screws to 12-16 ft-lbs (16.3-21.7 Nm).

**NOTE**

There will be a slight gap between the upper clamps and the risers toward the rear of the handlebars after tightening.

6. Refer to RIGHT HANDLEBAR SWITCH: INSTALLATION in the Service Manual, and follow the instructions given to install the **new** throttle control cables and a new (purchased separately) or original right grip/throttle sleeve assembly.

7. Refer to the THROTTLE CABLES section of the Service Manual to route the new throttle and idle cables to the carburetor or induction module.
8. Loosely fasten the brake-lever clamp to the new handlebar.
9. Slide the rubber sleeve on the right-side handlebar switch wires over the right-side end of the new handlebar. Position the rubber sleeve over the switch wires **inside** the switch housing.  
Push the switch and rubber sleeve into the slot on the new handlebar. Loosely fasten the handlebar switch housing to the handlebar.
10. Adjust the position of the switch housing and the brake lever assembly on the handlebar for rider comfort and posture. The brake master cylinder must be horizontally level.

**NOTE**

*Tighten the top **brake lever clamp** screw before tightening the bottom screw.*

11. Use a T-27 TORX drive head to tighten first the top, then the bottom brake-lever clamp screws to 71-80 **in-lbs** (8.0-9.0 Nm).

**NOTE**

*Tighten the lower switch housing screw before tightening the upper screw. This will leave any gap in the switch housing at the front for best appearance.*

12. Use a T-25 TORX drive head to tighten first the lower, then the upper **switch housing** screws to 35-45 **in-lbs** (4.0-5.1 Nm).
13. Verify that the right grip/throttle sleeve rotates and returns freely and does not bind on the handlebar or switch housing.

**NOTE**

*If the handlebar grips are patterned, align the pattern on the left grip with the pattern on the right grip while the throttle is in the fully closed position.*

14. Install a new (purchased separately) or original handlebar grip on the left end of the new handlebar according to the handlebar grip instruction sheet or LEFT HAND GRIP, INSTALLATION instructions in the Service Manual.
15. Slide the rubber sleeve on the left-side handlebar switch wires over the left-side end of the handlebar. Position the rubber sleeve over the switch wires inside the switch housing.  
Push the switch and rubber sleeve into the slot on the new handlebar. Loosely fasten the handlebar switch housing to the handlebar. Refer to LEFT HANDLEBAR SWITCH: INSTALLATION in the Service Manual.
16. Adjust the positions of the switch housing and the clutch lever assembly on the handlebar for rider comfort and posture.
17. Use a T-27 TORX drive head to tighten first the top, then the bottom clutch-lever clamp screws to 71-80 **in-lbs** (8.0-9.0 Nm).
18. Use a T-25 TORX drive head to tighten first the lower, then the upper **switch housing** screws to 35-45 **in-lbs** (4.0-5.1 Nm).

**NOTE**

*Molex connectors are used for the handlebar control wiring on 2007 and later models. 2006 and earlier vehicles use Deutsch connectors. Refer to the MOLEX ELECTRICAL CONNECTORS or DEUTSCH ELECTRICAL CONNECTORS section of the Service Manual for re-connection procedures.*

19. Refer to the notes made during the removal steps, and the wiring diagram and correct ELECTRICAL CONNECTORS section in the Service Manual. Insert each socket terminal from the left-side switch-wire bundle into the correct cavity of the **gray** socket housing removed earlier.
20. Insert each socket terminal from the right-side switch-wire bundle into the correct cavity of the **black** socket housing removed earlier.
21. Insert each socket terminal from the electronic cruise-control wire bundle into the correct cavity of the two 4-way connectors removed earlier, if so equipped.

**FINAL ASSEMBLY**

**WARNING**

**Replace brake line gaskets. Re-using original gaskets can cause brake failure and loss of vehicle control, which could result in death or serious injury. (00318a)**

**CAUTION**

**Avoid leakage. Be sure gaskets, banjo bolt(s), brake line and caliper bore are clean and undamaged before assembly. (00321a)**

1. Carefully inspect the **new** brake line for damage or defects, and replace if damaged. Install the brake line per the Service Manual instructions or the instructions included with the Brake Line Kit.
2. Bleed the brakes. See BLEEDING HYDRAULIC BRAKES in the Service Manual.
3. Install the **new** clutch cable per the CLUTCH HAND CONTROL instructions in the Service Manual.

**SAFETY CHECK**

**WARNING**

**Be sure that steering is smooth and free without interference. Interference with steering could result in loss of vehicle control and death or serious injury. (00371a)**

- **Be sure wires, clutch cables, throttle/idle cables and brake lines do not pull tight when handlebars are turned fully to left or right fork stops.**
1. Verify that the Ignition/Light Key Switch is turned to the OFF position.  
Apply a light coat of petroleum jelly or corrosion retardant material to the negative battery terminal. Refer to the Service Manual and follow the instructions given to re-attach the negative battery cable.

**⚠ WARNING**

Be sure that all lights and switches operate properly before operating motorcycle. Low visibility of rider can result in death or serious injury. (00316a)

2. Turn the Ignition/Light Key Switch to IGNITION and test each handlebar switch for proper operation.
3. Apply the front brake hand lever to test operation of the brake lamp.
4. Refer to the Service Manual, and follow instructions to install the seat.

**⚠ WARNING**

After installing seat, pull upward on seat to be sure it is locked in position. While riding, a loose seat can shift causing loss of control, which could result in death or serious injury. (00070b)

**⚠ WARNING**

Before starting engine, be sure throttle control will snap back to idle position when released. A throttle control that prevents engine from automatically returning to idle can lead to loss of control, which could result in death or serious injury. (00390a)

**⚠ WARNING**

After repairing the brake system, test brakes at low speed. If brakes are not operating properly, testing at high speeds can cause loss of control, which could result in death or serious injury. (00289a)

**SERVICE PARTS**

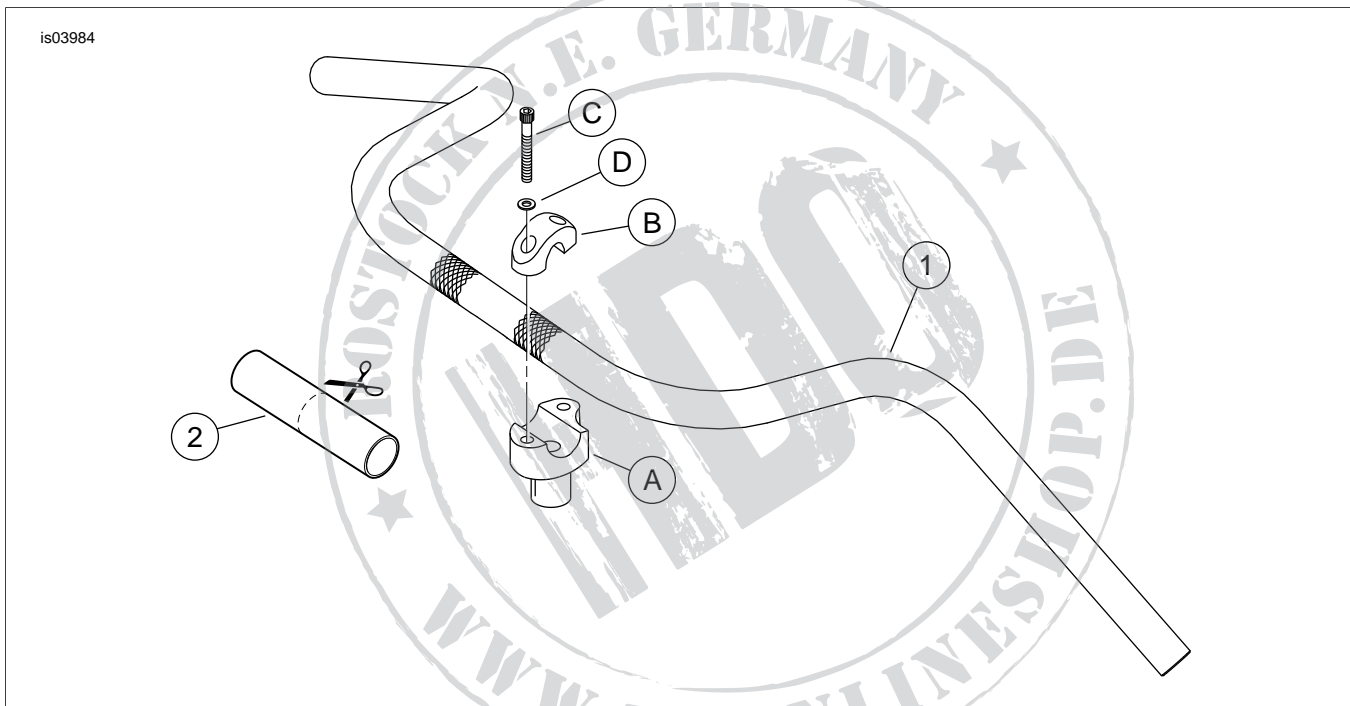


Figure 2. Service Parts

Table 1. Service Parts Table

Item	Description (Quantity)	Part Number
1	Handlebar	Not sold separately
2	Sleeve, rubber	Not sold separately
<b>Items mentioned in text, but not included in kit:</b>		
A	Original equipment handlebar riser (2)	
B	Original equipment handlebar upper clamp (2)	
C	Original equipment handlebar clamp screw (4)	
D	Original equipment flat washer (4)	