



# INSTRUCTIONS

-J04897

REV. 2009-06-16

## CHOPPED FENDER LUGGAGE RACK

### GENERAL

#### Kit Number

54250-10

#### Models

For model fitment information, see the P&A Retail Catalog or the Parts and Accessories section of [www.harley-davidson.com](http://www.harley-davidson.com) (English only).

#### Required Additional Parts

If installing a detachable accessory, separate purchase of two Docking Points (53686-96A) are required for proper installation of this kit. See a Harley-Davidson dealer.

Separate purchase of LOCTITE® 243 Threadlocker and Sealant - Blue (99642-97) is required for proper installation of this kit. See a Harley-Davidson dealer.

#### WARNING

**The rider's safety depends upon the correct installation of this kit. If the procedure is not within your capabilities or you do not have the correct tools, have a Harley-Davidson dealer perform the installation. Improper installation of this kit could result in death or serious injury. (00308a)**

#### WARNING

**Do not exceed luggage rack weight capacity. Too much weight can cause loss of control, which could result in death or serious injury. (00373a)**

#### NOTE

*Maximum luggage rack weight capacity is 10 lb (4.5 Kg).*

#### Kit Contents

See Figure 2 and Table 1.

### REMOVAL

1. See Figure 1. Remove stock hardware from the fender mounting hole (1).
2. Remove and discard the stock fender support screws (2).

### INSTALLATION

1. See Figure 1. Remove the adhesive backing from the protective tape (3). Align and install the tape on the fender around the fender mounting hole (1).
2. Loosely install fender support screws (8), washers (7), luggage rack (6) and washer (5).

#### NOTE

*If installing a passenger pillion, do not install washer (10).*

3. Position the spacer (4) over the protective tape and align with the mounting hole. Install with the concave side of the spacer against the fender. Install washer (10) and alignment spacer (11). Be sure the alignment spacer is aligned with the ID of the spacer (4) and washer (10).
  4. Apply Loctite 243 to threads of mounting screw (12).
  5. Position the seat tab retainer (9) under the fender and above the fender bracket (14) and install the luggage rack mounting bolt (12) and flat washer (13) through the rack, alignment spacer (11), washer (10), spacer (4), fender mounting hole (1), seat tab retainer (9) and into fender bracket (14). Tighten the bolt to 120-144 **in-lb** (13.5-16.3 Nm).
- NOTE**  
*If the rack is being installed with a detachable docking point kit, replace washer (7) and bolt (8) with two docking points (53686-96A - purchased separately) and the bolt from the detachable docking point kit.*
6. Apply Loctite 243 to threads of mounting screw (8). Install fender support screws (8), washers (7), luggage rack (6) and washer (5). Tighten to 15 ft-lb (20 Nm).

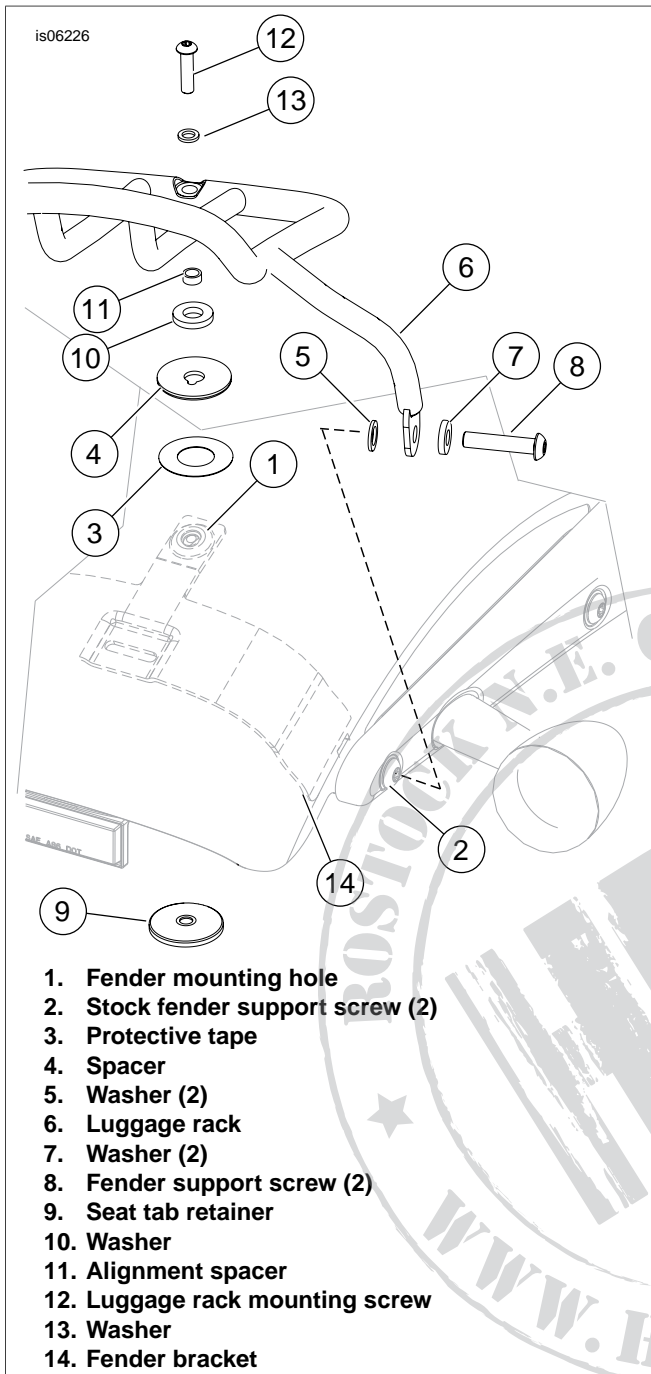


Figure 1. Install Chopped Fender Luggage Rack

## SERVICE PARTS

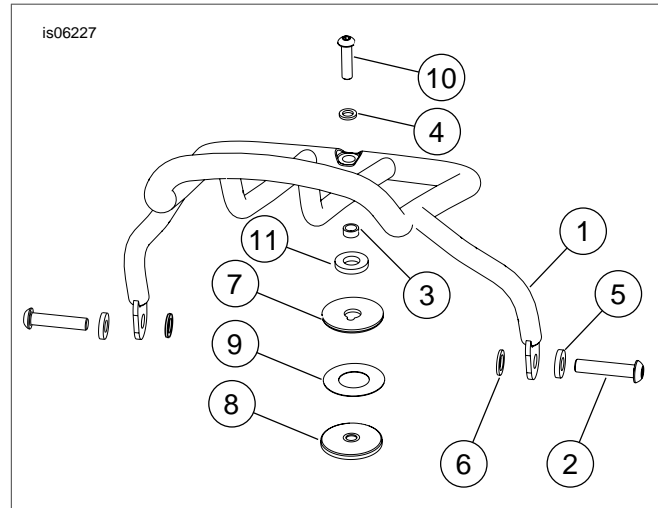


Figure 2. Service Parts: Chopped Fender Luggage Rack

Table 1. Service Parts

Item	Description (Quantity)	Part Number
1	Luggage rack	Not Sold Separately
2	Cap screw, 5/16-18 x 1.50 inch	3140
3	Spacer	5840
4	Washer	6101
5	Washer, 0.125 inch thick (2)	6109
6	Washer, 0.60 inch thick (2)	6874
7	Spacer	11932
8	Retainer, seat tab	54288-10
9	Tape, protective	59566-03
10	Screw	94595-98
11	Washer, 0.134 inch thick	6397B