



INSTRUCTIONS

-J02458

REV. 2007-10-17

ENGINE-GUARD FOOTPEG BILLET MOUNTING KIT

GENERAL

Kit Number

50957-02, 50957-02A

Models

For model fitment information, please see the P&A Retail Catalog or the Parts and accessories section of www.harley-davidson.com.

Additional Parts Required

This kit requires installing a set of footpegs, sold separately and available from a Harley-Davidson dealer.

This kit requires installing Footpeg Bolt Kit 94133-01, sold separately and available from a Harley-Davidson dealer.

This kit requires LOCTITE® 243 (blue) (Harley-Davidson Part Number 99642-97), sold separately and available from a Harley-Davidson dealer.

Kit Contents

See Figure 1 and Table 1.

INSTALLATION

1. See Figure 1. Position a footpeg mount (3) and clamp (1) on the engine guard. Position the footpeg mount (3) to allow the footpegs to fasten on the inboard side of the engine guard.
2. Apply LOCTITE® 243 (blue) to two screws (4).
3. Use the screws from Step 2 to fasten the footpeg mount in a comfortable location on the engine guard. Tighten screws to 14 ft-lbs (19 Nm) .
4. Install a footpeg, sold separately, using the spring washer (2), and bolt and locknut (from kit 94133-01). Position the spring washer inside the footpeg mount with the square edge toward the inside of the mount. Tighten locknut to 19 ft-lbs (26 Nm) .

5. Repeat Steps 1-4 on the other side of the motorcycle.

SERVICE PARTS

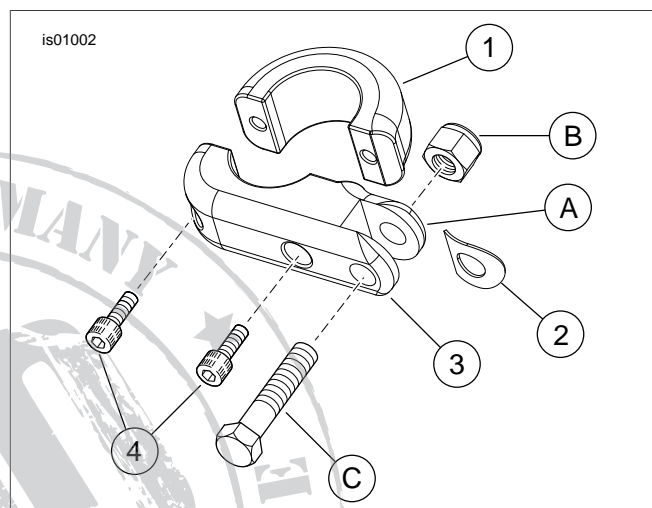


Figure 1. Service Parts: Engine-Guard Footpeg Billet Mounting Kit

Table 1. Service Parts Table

Item	Description (Quantity)	Part Number
1	Clamp	51009-02A
2	Spring washer (2)	50912-72
3	Billet footpeg mount	50988-02A
4	Socket-head screw (4)	94311-91T
Items mentioned in text, but not included in kit:		
A	Position this part of the bracket toward the motorcycle	
B	Locknut from kit 94133-01	
C	Bolt from kit 94133-01	